



The Holton Recorder's Everything Spring Section

Wednesday, March 15, 2017

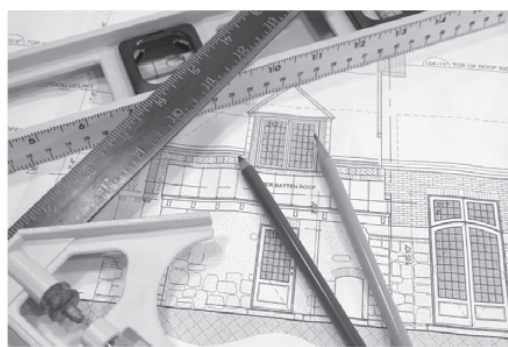
(Page 1A)

It's spring car and home season . . .



Spring Forward with an affordable loan for a used or new auto.

Spring Out with a home purchase or remodel financing.



Make the most of your spring season.



DENISON STATE BANK

In Holton, Hoyt, Meriden and Topeka
1-800-633-2423



TOPEKA LANDSCAPE

outdoor imagination

785-232-8873

www.topekalandscape.com

Providing landscape design, lawn fertilization and weed control in the Holton area.
Call for a **FREE ESTIMATE** today!



Ray's Glass & Screen

410 Montana (shop in back)



2017 is the time to replace those drafty windows with energy efficient windows.

WE REPAIR GLASS & SCREENS DAILY.
Call today for a free estimate.
785-364-4502

Index of Advertisers

A.D.S. Distributing	5A	Holton Greenhouse	4A	Onaga Ag & Auto Repair	4A
Aeschliman Construction	2A	Holton Lumber Company	2A	Penny's	4A
Al's Overhead Door Service	3A	Holton National Bank	4A	Ray's Glass & Screen	1A
Bell Plumbing, Inc.	6A	Holton Tire & Service	7A	Rent-A-Tool	3A
Chiles Upholstery Service	6A	Homestead Affordable Housing	8A	Riley Electric	5A
Chris Gross Construction	4A	Horticultural Services	2A	Sawyer Custom Building & Remodeling	2A
Country Greenhouse	8A	Jackson County Recycling	5A	Sullivan Construction	2A
Denison State Bank	1A	Jayhawk TV & Appliance	2A	Sutherlands	3A
Don Ash & Son, Inc.	6A	Koger Variety	8A	Tarwater Farm & Home	5A
Eubanks Custom Woodworks	4A	Kyle's Construction	8A	The Farmers State Bank	2A
Farm Bureau Financial Svcs.	4A	Mark's Overhead Door Service	6A	The Holton Recorder	7A
Grass Roots Lawn Care	4A	McManigal Electric	6A	Topeka Landscape	1A
Grimm's Gardens	8A	Mick's Tree Service	5A	Watkins Family Mower Care	2A
Ground Source, Inc.	5A	Morton Buildings	5A	You Name It Handyman	4A
Haug Construction	6A	Netawaka Fitness Center	8A		
Heinen Repair Service	5A				
Holton Farm & Home	8A				

Everything SPRING

When the time is right...
know the *right* builder to call.



"Let our family serve your family."

Please call Mark Aeschliman
12878 Oak Ridge Ln. • Holton, KS 66436
Home: 785-364-2517 • Cell: 785-207-0416
Fax: 785-364-2517
AeschlimanHolton@embarqmail.com
Thank you for your consideration.

Call Aeschliman Construction, Inc.

- They have been in business since 1994.
- They are a company that specializes in New Homes, Additions, Decks, Finishing Off Basements, Remodeling, and Interior Trim Work.
- They are fully insured with workers compensation and liability insurance.
- They have many local references available upon request.
- They are a company that services Jackson County & surrounding areas and would love to work for you.



AESCHLIMAN
CONSTRUCTION, INC.

COUNTRY CLIPPER

ZERO TURN MOWER
CountryClipper.com



BUY LOCAL,
SERVICE LOCAL,
REPAIR LOCAL



Stand-Up Deck

as low as **\$3,499**

Financing Available.

Payments starting as low as \$68⁰⁰ (wac)



785.364.3431

Call Today!

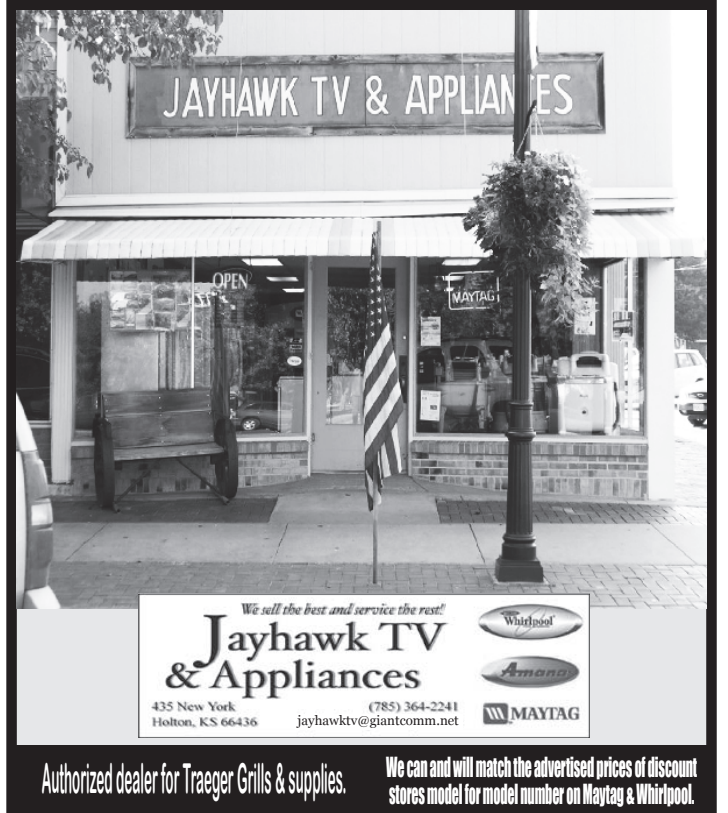
Watkins MowerCare
www.watkinsmowercare.com

Holton, KS

PICKUP/DELIVERY
AVAILABLE

SHOP WITH
YOUR LOCAL
PROFESSIONALS!

Stop By Our Showroom For Great Deals!



We sell the best and service the rest!
Jayhawk TV & Appliances
435 New York
Holton, KS 66436
jayhawktv@giantcomm.net

Authorized dealer for Traeger Grills & supplies.

We can and will match the advertised prices of discount stores model for model number on Maytag & Whirlpool.

Transform Your Home This Spring



Spring Time is a time for Construction Loans or Home Improvement Loans
Call 785-364-4691 today
and let us help you with your special projects!

Sponsored by
THE Farmers State Bank
209 Montana Avenue • Holton, KS 66436
Phone 785.364.4691 • Fax 785.364.4330
Hometown Banking with Your Neighbors and Friends
www.fsbks.bank

Spring is the Best Time To Plan To Build or Remodel

CUSTOM HOMES • GARAGES
ROOM ADDITIONS



SAWYER
CUSTOM BUILDING
AND REMODELING
785-364-2425
23590 T Road, Holton

Koger Variety

Koger Variety has been owned and operated by Carolyn and Chris Koger for 43 years. Located on the west side of the Holton Square, the business offers more than 50,000 items including home décor, gifts, office supplies, candy, a soda fountain,

toys and greeting cards. Koger Variety has offered tuxedo rentals for more than 25 years. The store's motto is "where shopping is fun." For more information, call 364-3321.

Eubanks Custom Woodworks

For 37 years, Eubanks Custom Woodworks has been crafting custom cabinets and wood furniture that has earned the company accolades throughout northeastern Kansas. Eubanks Custom Woodworks in Holton offers its customers several reasons why they should select the business for their next project. Owner Mike Eubanks and his staff are recognized for a full line of cabinetry, including kitchens, hutches, bookcases,

laundry room and bathroom shelving, entertainment centers and workspace and storage cabinets. Examples of Eubanks Custom Woodworks' offerings may be found at the business' showroom at 310 New York Ave. in Holton. To schedule an appointment with our designer or visit Eubanks' showroom, call 364-4377, fax 364-0139 or e-mail eubankscustom@gmail.com

Ground Source, Inc.

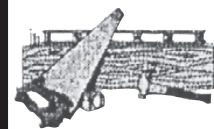
Why buy from Ground Source, Inc.? Since 1991 Ground Source, Inc. has installed more than 600 geothermal systems in Northeast Kansas. We have geothermal units in everything from trailer houses to churches. Most systems are in the 1200 square foot to 5,000 square foot homes over full basements. We do all shapes and sizes. Over the last eight to nine years about 50 percent of our jobs include zoning. We are turnkey. We install all the ductwork, controls, registers and grills. We have the equipment to install the loops. We subcontract the vertical drilling, and then connect them through the foundation to the unit. About 90 percent of our systems are horizontal loops. We also install pond and open loops. We are a Water Furnace Geo Pro Master dealer. We are also certified in loop installations,

service and repairs. Tim has a Topeka Master Mechanical License. We carry proper insurance for the business we do. Ground Source, Inc. has a full stock of replacement parts and a trained technician if a problem should occur. Ground Source, Inc. is a member of The Topeka Home Builders Association, The Flint Hills Area Builders Association, and the Lawrence Home Builders Association. Tim is a certified Green Professional, and he is also IGSHPA and NATE certified. We chose the Water Furnace brand because it is the leading manufacturer of geothermal heating, cooling and hot water systems and they provide us with great service. We hope you will choose Ground Source, Inc. because we are the leading installers and will provide you with great service.



Call us for all your
CONCRETE WORK
Walks • Driveways
Patios • Floors • Steps
Parking Lots • Basements

Sullivan Construction Co.
Commercial & Residential
Concrete Work
Holton • 364-7017



For all your
building needs.
WE DELIVER!



Holton Lumber Company, Inc.
Vaspar Paint
Cabot Stains
Penofin Stains
415 Michigan Avenue
Holton, Kansas 66436
Fax: 785-364-4642
Phone: 785-364-4641

Jayhawk TV and Appliance

For more than 60 years, Jayhawk TV and Appliance has served northeast Kansans' appliance needs. Located on the northwest corner of Holton's Town Square, the showroom floor displays a selection of Whirlpool, Amana, Maytag and KitchenAid appliances along with Traeger Grills. Customers don't have to drive far to get the best deals as Jayhawk TV and Appliance will price-match the big box stores.

Jayhawk TV and Appliance also offers delivery and installation of new appliances and will recycle old appliances. Jayhawk services all brands of major appliances and serves as a warranty center for most brands of appliances, including televisions. Check out Jayhawk's Facebook page and website, jayhawktv.net, for weekly specials and check in at the store for weekly surprise discounts.

Chiles Upholstery Service

Chiles Upholstery Service of Holton has served northeast Kansas for 47 years, offering upholstery services on home furniture, car and truck seat, tractors, boats, golf carts and motorcycle seats. The business will also reupholster items and

install new foam. John and Glenna Chiles operate the business with their son, John. For information on services provided, visit the office at 218 E. 5th St. in Holton or call 364-2824.

Open House
Sat. & Sun. **March 25 & 26**
Get Ready for Spring!
Specials: **Black Gold Potting Soil**
Soil Amendments & more
We Have a Good Thing Growing for You!

Horticultural Services 2 mi E. of Manhattan on Hwy. 24
Garden Center M-Sat. 9-6 Sun. 12-6
Since 1970 776-5764 hortservinc.com

Bell Plumbing, Inc.

Bell Plumbing, Inc., located at 417 E. Fifth St. in Holton, has been serving the Jackson County community for more than 40 years. Bell Plumbing is fully licensed and insured and specializes in meeting all of your plumbing needs. From drain work to new home, the business is equipped to take care of all customer needs.

The Bell Plumbing staff will meet with you to help you in selecting fixtures for your home or remodel. The staff is qualified to repair or replace all of your plumbing fixtures. Bell Plumbing also provides water conditioning products and service. For more information, contact the business at 364-4434.

Morton Buildings

Morton Buildings has a rich history that many of you have taken part in for several decades. Morton Buildings is the largest post-frame, steel-covered building construction company in America. Our employees are split between Sales, Crews, Administrators and Plant personnel across the country. About 200 employees are also housed at the home office in Morton, Ill. Morton Buildings was founded as the Interlocking Fence Company in 1903. The compa-

ny sold mail order supplies and wire link fencing. In 1949, IFC built its first building, a machine storage structure, for farm use. In June 1965, the company was renamed Morton Buildings. Our company may have started small but we have grown into a leader in our field. Morton Buildings started out as simple machine storage sheds but has evolved, as our customers have, into just about anyone looking to build just about anything.

Everything SPRING

Penny's

Penny's, located on the west side of the Holton Town Square is a one-stop shop for your coffee, baked goods and event space needs!

Penny's is proud to serve PT's Coffee, roasted nearby in Topeka. Penny's serves both drip coffee and espresso drinks such as lattes, mochas, frappes and iced coffees. With a wide variety of flavors, both regular and sugar-free, just about any craving can be satisfied at Penny's

Many non-coffee selections are available as well: Chai Tea Lattes, Hot Tea, Lemonade, Iced Tea, Smoothies, Italian Sodas, and blended drinks in fun flavors like Java Chip, Cookies & Cream, and Cake Batter. Smaller sizes are always available for kids as well.

The baked goods at Penny's vary daily. Selections such as quiche, ham & cheese puff pastries, baked buttermilk donuts, honey oat bars, muffins, cupcakes, banana bread, cookies, brownies and more are all homemade on site each day.

Penny's is also happy to take special orders for their baked goods - whether it's several dozen cupcakes for a birthday party, a cookie tray for your next meeting, or a quiche to serve your family for breakfast, they will work with you to come up with the perfect selections.

The event room at Penny's is available for receptions, parties, reunions, trainings, meetings, and more. With a capacity of approximately 150 at tables and chairs, a built-in sound and projector system, and many different lighting schemes, it's the perfect place for your next function. Stop by for a tour, or contact Erin Lassey, owner, at 785-362-6043 for more information.

Grass Roots

Roger Collins knows what it takes to improve a lawn by ridding it of unwanted weeds and pests, and for more than 33 years, Collins' business, Grass Roots Pest Control and Lawn Care, has been putting that knowledge to work.

Grass Roots' basic function is "to provide quality pest control and lawn care at an affordable price to the community," said Collins, who owns and operates the business with his wife, Barb.

The business' motto is "Where Satisfied Customers Send Their Friends."

Indoor and outdoor pest control, including eliminations of unwanted termites, ticks, fleas, spiders and beetles, is offered by Grass Roots.

The business also handles lawn care, such as weed control, fertilization, insect and disease control, seeding and aeration.

Call Roger or Barb at 364-5155 for more information on improving the look of your lawn and ridding your homes of unwanted pests.

You Name It Handyman

You Name It Handyman is owned by Terry Fox, who has more than 10 years of experience providing handyman services.

Fox offers repairs and improvements to homes and mobile homes, as well as building maintenance.

The business has a skid loader and bucket truck for hire, as well as property clean-up services.

Fox offers "everything but heating and cooling." "No job is too small." He is based in Mayetta and is bonded and insured.

For more information, call (785) 966-2628.

Aeschliman

Since 1994, Mark Aeschliman and his team at Aeschliman Construction Inc. have been constructing new homes, additions and decks, as well as finishing basements, remodeling homes and doing interior trim work.

The company is located in rural Holton. It is fully insured with workers compensation and liability insurance.

"We would love to have our family work for yours," Aeschliman said.

Aeschliman Construction Inc. serves Jackson County and the surrounding areas, and local references are available upon request.

For more information about the company, call Mark at 364-2517 or (785) 207-0416, or e-mail AeschlimanHolton@embarqmail.com

shop at Sutherlands & SAVE your pot 'o gold

WESTFIELD™ LANDSCAPE BLOCK
 • 12" wide x 3 1/2" high x 7" deep • 20 lbs. each • Solid piece (no holes underneath)
 • Stackable, mortarless • Lip on back for easy installation • A great "value" for your money
 • Great for retaining walls up to 2' in height, tree rings, flower gardens & many other uses.
 5184288/304296

Oldcastle
99¢ ea.

RIVER PEBBLES
 #54250 3977857

2⁹⁹ .5 cu. ft.

MARBLE CHIPS
 #54141 3977212

3⁴⁹ .5 cu. ft.

ARKANSAS WHITE PEBBLES
 #54252 6842918

reg. \$3.99
3⁴⁹ .5 cu. ft.

POND PEBBLES
 #54249 4035739

reg. \$3.49
2⁹⁹ .5 cu. ft.

Oldcastle
BALLARA™ BLOCK
 • Natural slate texture.
 • 1.75" x 15.75" x 15.75".
 • Tan/gray.
 #104911280 7955032

reg. \$2.99
2⁴⁹ ea.

Miracle-Gro
GARDEN SOIL
 • Specially formulated for annuals, perennials & vegetables.
 • Ideal for in-ground plant growth.
 #MR75052430 5980315

7⁴⁹ 2 cu. ft.

#1 USED RAILROAD TIE
 • Approx. 7" x 8" - 8". 11023
 Versatile railroad tie - use as steps, border, retaining wall, raised plant beds.

\$14 ea.

WEED BARRIER PRO® LANDSCAPE FABRIC
 • Suppress weed growth without chemicals.
 • Conserves soil moisture.

	3' x 50'	3' x 100'
	reg. \$6.49	reg. \$10.99
5 year	4⁹⁹ <small>8161721</small> save \$1.50	8⁹⁹ <small>8161747</small> save \$2
10 year	6⁹⁹ <small>8161762</small> save \$2	13⁹⁹ <small>8161788</small> save \$2

Oldcastle
'EDGESTONE'
 • Natural, Plaza Red, Red/charcoal or Tan.
 3302304/296 3546397 3546470

reg. \$1.49
1²⁹ ea.

EasyFlex NO-DIG EDGING KIT
 • Good for both curved and straight installations.
 • No unsightly hollow round beaded top.
 • Superior flexibility for doing aggressive curves and designs.
 #3000-20-6 5435516

13⁹⁹

DeWitt
STRAW GUARD
 • Provides faster germination and seed does not wash away.
 • 4' x 50'.
 • Covers 200 sq. ft.
 • Includes 12 - 4' biodegradable stakes
 #EL-SB200 8161820

19⁹⁹
 Designed to protect grass seed and topsoil
Not available all locations

1917 Sutherlands 100 2017
CYPRESS LANDSCAPING MULCH 2940047

2⁵⁰ 2 cu. ft.

prices good thru March 22, 2017

Sutherlands
 Home Improvement • Building Material

2210 NW Tyler St., Topeka, KS
 785-232-3900 • sutherlands.com
 Hours: M-Sat. 7:30-8 • Sun 9-5

We reserve the right to limit quantities to the amount reasonable for homeowners and our regular contractor customers. Some items may vary slightly from illustrations. We cannot be held responsible for printing errors, however, we will make every effort to clarify any confusion they may cause. All warranty information is available at the service counter. See store for details.

Sutherlands

Based in Kansas City, Missouri, Sutherlands is one of the largest privately-owned home improvement center chains in the United States and will celebrate its 100th birthday in 2017.

Sutherlands stores range in size from small lumberyards to large 140,000+ square foot warehouse stores.

The combined buying power of Sutherlands is

Topeka Landscape

"If you can imagine it, we can create it." Topeka Landscape has been building relationships through landscape design, installation, and maintenance since 1994, giving it the experience to handle any project on any budget.

Whether you are in need of landscape design and installation, tree/shrub/bed care, lawn care or irrigation, Topeka Landscape is here to help.

The goal of the business is to consistently provide high-quality landscaping solutions to not only enhance the value of your home, but are aesthetically pleasing, imaginative, properly installed, and tailored to your personal style. "There is no job too big or too small: let us bring your outdoor imagination to life!"

Topeka Landscape is locally owned and operated. "We're different from other companies because we feel that hiring, training, and retaining the best people is of the utmost importance," said co-owner Andy Gilliland. "It's what we do."

For more information about Topeka Landscape, call 785-232-8873 or visit them online at www.topekalandscape.com

passed directly to its customers.

Each of the Sutherlands stores stock a large variety of building materials especially selected for the region. Lumber is our business... not a sideline!

Topeka Sutherlands is located at 2210 N.W. Tyler St., Topeka, Kan. The Topeka store can be reached at 785-232-3900.

Rent-A-Tool

Rent-A-Tool offers a variety of equipment to tackle any home or business project.

Located just two miles south of Sabetha, the company rents skid steers, tractors, excavators, trenchers, trailers, scissors lifts, concrete equipment, yard equipment, flooring equipment, nailers, drain cleaners---and more.

Rent-A-Tool also sells Dolmar chainsaws and weed trimmers; Country Clipper zero turn lawn mowers and more.

Anything we rent, we will sell. The business is owned by Darin and Karen Edelman and family. They have been in business for 18 years.

Rent-A-Tool also does small engine repair and service. Stop by and check them out!

RENT-A-TOOL

2458 168th Rd. - Sabetha, KS
 2 miles South of Sabetha, KS on old Hwy. 75, then 1/2 mile West

785-284-0819

Stop by to drive one today!

RENTAL • SALES • SERVICE
 Expanding slowly and therefore growing... to meet your needs.

JOYSTICK STEERING CONTROL

CONVENIENT FLIP-UP DECK!

GARAGE DOORS

by **doorLink Manufacturing, Inc.**
MODEL 3610

FEATURES:

- Sandwich type construction with CFC free expanded polystyrene insulation pressure bonded between two sheets of 26 gauge hot dipped galvanized steel with a 10.25 R value.
- 1.0 mil paint system includes 25 mil rust inhibiting primer and .75 mil exterior top coat that resists fading and chalking while providing consistent color from panel to panel.
- 20 gauge hot dipped galvanized steel hinge plates run the full heights of each section at all hinge locations to facilitate the attachment of hinges, handles, struts and step plates.
- Rigid aluminum retainer provides added strength while securing replaceable u-shaped bottom weatherstrip.
- Sections include tongue and groove meeting rails for superior strength and better sealing against wind, rain and snow.

Traditional Raised Panel Insulated Sandwich Residential Garage Door - R value: 10.25

Sizes Available: DOOR WIDTHS: 8', 9', 10', 12', 14', 15', 16', 17', 18', 20' **HEIGHTS AVAILABLE:** 6'6", 6'9", 7'0", 7'6", 7'9", 8'0"

2-inch thick insulated sandwich panel constructed of top quality materials, highly detailed raised panel embossment, deep woodgrain texture and two coat prefinished paint system all combine to enhance the beauty of your home.

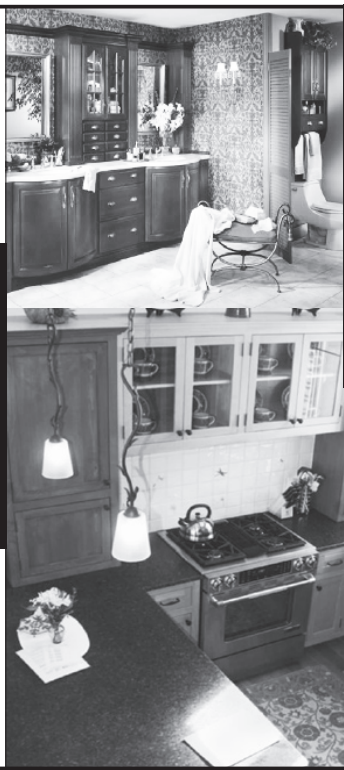
Al's Overhead Door Service, Inc.
 In Business for 40 Years
 785-286-2555 • 5000 NW 35th St. • Topeka, Kan.

Everything SPRING

**Celebrating
37 years
in Business!**

FULL LINE OF CABINETRY INCLUDING:
 Kitchen • Laundry Room
 Hutch • Bathroom Vanities
 Bookcases
 Entertainment Center
 Workspace &
 Storage Cabinets

**Schedule an appointment
with our designers to
discuss your ideas!
MAKE YOUR
APPOINTMENT TODAY!**



*We'll create your ideal design
at a price that fits your budget.
Our designers will work closely
with you to create the kitchen,
bath or anywhere you desire
cabinets. Our handcrafted
cabinetry will suite
whatever your unique style
and needs are!*

**Contact us today to schedule
a FREE in-home quote
785-364-4377**

**EUBANKS CUSTOM
WOODWORKS**

310 New York, Holton, KS 66436
 eubankscustom@gmail.com

Find us on Facebook

FARM BUREAU FINANCIAL SERVICES
 Auto | Home | Life

**Annuities
Business
Farm/Ranch**

Insurance • Investments
 www.fbfs.com

**• Robert Wareham
• Mitchell Nicol**

521 Arizona • Holton, KS 66436
(785) 364-2111

**Farm Bureau
Financial Services**

When it comes to insuring your home, car and family, Farm Bureau Financial Services in Holton is ready to meet the needs of its customers.

Agents Robert Wareham and Mitchell Nicol, and sales associates Bridget Fulkerson, Crystal Nesbitt and Casey Patterson, serve the Jackson County community from their office at 521 Arizona Ave. in Holton.

The Kansas Farm Bureau Mutual Insurance Company was founded in 1938, offering farm, health and auto insurance.

Ten years later, the Kansas Farm Bureau Life Insurance Company was founded, and today, Farm Bureau Property & Casualty Company provides insurance protection to members in eight states, and Farm Bureau Life Insurance Company offers insurance and financial services to 14 states in the Midwest.

For more information on services provided by Farm Bureau Financial Services, please visit the Holton office, call 364-2111 or go to www.fbfs.com

HOLTON GREENHOUSE NOW OPEN!

**We have certified seed potatoes,
onion sets & bulk seed available.**

25% Off Pottery & Hard Goods!
 Pansiolas, Pansies, Osteos
 & Shamrocks – Blooming & Ready

Watch our Facebook business page (Holton Greenhouse) for hours & updates!

HOURS: March 8 thru March 31
Wed.-Fri.: 11 a.m.-1 p.m.
Saturday: 9 a.m.-1 p.m.
CLOSED: Sunday, Monday & Tuesday

109 New Jersey • 785-362-7070

If we are here, come on in!

**DO BUSINESS
WITH YOUR
FRIENDS IN THE
COMMUNITY!**

You got the blueprint. We got the loan.

*From breaking ground, to obtaining
permanent fixed rate financing,
to Home Equity Lines of Credit,
we offer it all at Holton National Bank.
We are a local bank proudly helping
Jackson County families make their dreams a reality.*

**HNB Holton National Bank
(Branch GNB)**

"The best place to bank and borrow."

100 East 5th Street
 111 South Hwy. 75
 Holton, KS 66436

785-364-2166
 Telebanking: 877-572-4636
 www.holtonnb.com

Member FDIC

**Chris
Gross
Construction**

Holton, Kansas
(785)364-5600

**Residential &
Commercial Buildings**

Chris Gross, Owner
 12423 Memory Lane, Holton, KS 66436

When planning those special spring and summer events... call us!

PENNY'S

409 New York • West side of the Holton Square

Event Space Available
 Receptions • Meetings • Weddings
 Reunions • Training Sessions

For more info, call Erin Lassey
 Phone: 785-362-6043 • Cell: 785-851-7211
 Owner: Erin Lassey • Visit us on Facebook: PennysHolton
 Pennysholton@gmail.com

**Keep Your
Yard Looking
Great with...**

Husqvarna

HUSQVARNA TRIMMERS
 The Husqvarna multi-purpose trimmer has power, durability and versatility for homeowners who want to keep their gardens in shape. Their low weight makes these machines extremely flexible, and are designed to deliver low noise - perfect for those living in residential areas.

HUSQVARNA 445 CHAINSAW
 New powerful all-round saw for people who value professional qualities in a saw. The X-Torq® engine means lower fuel consumption and reduced emission levels. Auto return stop switch and visible fuel level makes the saw easier to handle. Equipped with Smart Start® and fuel pump to ensure easy starts every time.

**HUSQVARNA RZ4824F
ZERO TURN MOWER**
 This mower is loaded with features for the price; 24hp Kawasaki engine, 10-11 gauge cutting deck with 1/2" re-inforced steel bump strip, 48" cut and more.

ONAGA AG & AUTOMOTIVE REPAIR
 Serving the area since 1985 • Roger Graf, owner
 Auto, Truck & some Farm Equipment Repairs • NAPA Auto Parts
 Husqvarna Mowers, Trimmers & Chainsaws
 110 East Third Street • Onaga, KS • 785-889-4841 • www.husqvarna.com
 Hours: Mon.-Fri. 8 a.m.-12 Noon & 1-6 p.m. • Sat. 8 a.m.-12 Noon

**Put your lawn care
in our care &
watch it thrive!**

It's time to schedule Spring pre-emergence lawn applications and broadleaf weed controls.

See us for termite inspections.

364-5155
State licensed and certified.
"Where Satisfied Customers Send Their Friends"

**Grass Roots
Pest Control
and Lawn Care**

Roger Collins, owner • 364-5155 • Holton, KS

Chris Gross Construction

For more than 17 years, Chris Gross Construction of Holton has been specializing in quality, economical post frame buildings.

As a hometown business, the staff at Chris Gross Construction provides many options including commercial, farm, garages, horse barns, home and storage buildings.

Each building is designed per the customer's specifications and in accordance to local building code requirements.

From strip malls to equipment sheds, the staff has years of professional experience in

constructing buildings and are backed by hundreds of satisfied customers.

Providing service to all of Jackson County and the surrounding areas, Chris Gross Construction maintains only the highest quality products with its crew of five local employees.

The company will customize any plans to best suit your building needs for style and size.

For more information, contact Chris Gross Construction at 364-5600 or visit the Web site www.chrisgrossconstruction.com

Haug Construction

For nearly half a century, Haug Construction, Inc. of Holton has been doing its part to fill the construction needs of county residents!

That work continues today with the variety of construction services offered by the company, founded in 1963 by Ambrose and Rosalita Haug.

Their son, Steve Haug, along with his son, John, continue the business today, offering truck-

ing, gravel, track loaders and dozers, backhoes and trenchers and hydraulic excavating services.

Other services offered include basement excavation, sewer and water line installation, terraces, outlets, fill sand, rock, topsoil and plastic and metal pipe.

For more information about your next project, contact Haug Construction at 785-364-3375.

**YOU NAME IT
HANDYMAN**

NO JOB TOO SMALL!
 HOME & MOBILE HOME REPAIR
 BUILDING MAINTENANCE
 SKID LOADER • PROPERTY CLEAN-UP
 BUCKET TRUCK FOR HIRE
 (EVERYTHING EXCEPT HEATING & COOLING)

Terry Fox • (785) 966-2628
BONDED & INSURED

Holton Farm and Home

Holton Farm and Home, located at the corner of U.S. Highway 75 and Sixth Street in Holton, has been serving Jackson County and the surrounding communities for 44 years. The store provides a wide variety of goods for both farm and home needs, thus the store's name says it all.

The store opened on March 1, 1973, with Frank and Anne Lossman as managers. After the Lossmans, Darlene Meier served as store manager until Wally and Julie Hawthorne purchased the store in 1978.

Holton Farm and Home strives to be "your friendly hardware store" and sales staff members are very knowledgeable and work hard to answer all customer questions and fulfill all customer product needs.

In 2007, the store teamed up with Orgill Bros. Hardware to

sell home hardware and related supplies. The store also has a showground and warehouse north of town, but operations primarily are kept at the main store in town.

Holton Farm and Home specializes in selling agricultural products, Filson cattle equipment, Keystone barbed wire fencing, Hustler Lawn Mowers, Makita power tools and Stihl power equipment. The store also provides work-clothing lines from Levi Strauss, Wrangler, Carhart and Key Industries and work boot lines from H&H, Carolina, and Muck Boots.

Holton Farm and Home also provides a full line of Van Sickle paint and painting supplies along with a full line of general plumbing, electrical and miscellaneous hardware items. The store is open from 7 a.m. to 6 p.m. Monday through Saturday and from 9 a.m. to 5 p.m. on Sundays. For more information, call 785-364-2162.

Onaga Ag & Auto Repair

Onaga Ag and Automotive Repair has been serving the area since 1985.

The business, owned by Roger Graf and specializes in auto, truck and some farm equipment repairs.

In addition to repairs, the business also sells NAPA auto parts and Husqvarna trimmers, chainsaws and mowers.

Business hours are from 8 a.m. to noon and from 1 p.m. to 6 p.m. Monday through Friday, and from 8 a.m. to noon on Saturday.

The business is located at 110 E. Third St. in Onaga and can be reached at 785-889-4841.

Holton Greenhouse

Holton Greenhouse, located at 109 New Jersey Ave., is owned by Sandy and Joe Snively. The location has been the site of a local greenhouse for many, many years.

The business includes three greenhouses, and the couple of-

fers a variety of plants, annual and perennial flowers, ornamental grasses, bulk seeds and pottery - and much more.

For all your home, garden and business needs, please call 785-362-7070.



Spring Is In The Air!

WATER FURNACE GEOTHERMAL SYSTEMS

With a WaterFurnace geothermal comfort system, you'll experience dramatic energy savings without sacrificing an ounce of comfort. Geothermal systems tap into the free, renewable energy in the ground, and with energy savings up to 60%, it's a smart choice.

GROUND SOURCE, INC.

215 E 5TH ST,
HOLTON, KS 66436
(785) 364-2514

Mick's Tree Service

KS Certified Arborist
Free Estimates • Tree Care • Stump Removal
Over 40 yrs. Experience
Licensed/Insured

517 Iowa, Holton • 785-364-5088
785-383-6670 (c)

Don Ash & Son, Inc.

Don Ash & Son, Inc. has been in business in Holton for more than 60 years. The three-generation business offers heating, air conditioning and ventilation services for commercial and residential buildings.

The business also offers replacement work. For more information, contact Randy Korte at 364-2417.

Holton Lumber

Holton Lumber Company Inc. is located at 415 Michigan Ave. in Holton and has been in business since 2003.

Holton Lumber has a good selection of dimensional lumber, treated lumber and siding for all of your building needs.

The business carries Valspar paint, Cabot stain, Penofin stain, sheetrock, sheetrock mud and tape, interior door casing and base molding, closet poles, handrails, door stops, Quickcrete, masonry and mortar mix, nails, screws, and many miscellaneous building materials and supplies.

The business also carries corrugated metal in 8, 10, 12, 14 and 16-foot lengths. Holton Lumber can also special order painted metal products.

Holton Lumber provides free estimates for any homebuilding or remodeling projects and metal projects.

Business hours are Monday through Friday 7 a.m. to 5 p.m. and Saturday 7 a.m. to noon.

For more information about your next building project, please call 364-4641.

Sawyer Custom Building & Remodeling

Gary W. Sawyer's business - Sawyer Custom Building and Remodeling - has been in the contractor business for more than 40 years.

The business is headquartered at 23590 T Road, Holton.

For your next building or remodeling project, you can trust Sawyer Custom Building and Remodeling.

For more information, 364-2425.

Watkins Family Mower Care

When you start to smell spring in the air, see the greening of the grass, and the days gradually getting longer, think of us - Watkins Family MowerCare in Holton, KS!

Michael and Stephanie Watkins, along with their children, have been running this family business since 2002.

Not only does Watkins Family Mower Care carry a full line of Country Clipper zero-turn mowers, but it also services and repairs most types of lawn tractor and push mowers.

Mike is a certified Briggs & Stratton engines dealer and warranty center. The business also offers in- and out-of-town delivery and pickup.

Just give them a call - 785-364-3431 - or look them up online at <http://www.watkinsmowercare.com>.

Watkins Family Mower Care is your local, hometown, Country Clipper dealer. Financing available.

The Farmers State Bank

The Farmers State Bank has been providing banking services to Jackson County and the surrounding area for more than 116 years.

In fact, The Farmers State Bank is the oldest and longest running bank in the county. The Farmers State Bank can provide all your banking needs, from mobile and on-line banking to the personal service you deserve for your loan and checking account needs. The bank also has two ATM locations for your convenience - one at the main bank and one on Hwy. 75 inside the Prairie Band One Stop Convenience Store.

The Farmers State Bank takes great pride in supporting our communities! The Farmers State Bank employees not only work and live in the surrounding counties, but also support them through many volunteer hours and donations throughout the year.

The Farmers State Bank is the only local bank that runs a United Way workplace campaign because we know that together we can do more and provide more for our community. Come and see what makes our bank special! Call us today at 785-364-4691 or visit us at www.fsbks.bank.

The Quality You Want

AGRICULTURE | EQUESTRIAN | GARAGE | COMMERCIAL

With a Price That Fits Your Budget

Whether you're in the market for a storage building, horse barn or farm shop, Morton Buildings can construct a building that meets your needs without breaking your budget.

Eight offices serving Kansas
800-447-7436
mortonbuildings.com

800-447-7436 • mortonbuildings.com

Riley Electric, Inc.

Since 1945

Dick Riley Byron Riley

rileyelectric@embarqmail.com

Residential, Rural & Commercial Wiring
Briggs & Stratton Home Standby System Dealer
Winco Generator Dealer

785.364.2821

Riley Electric

Riley Electric, Inc. is a third generation electrical business owned and operated by the Riley family since 1945.

In 1945, Bill Riley opened Riley Electric in Holton after working for many years at the City of Holton Distribution Department.

Soon after opening the business Bill was injured in a fire at which time his son, Dick, at only 11 years old, began working for the business as hired help after school. He continued his electrical work through high school and into adulthood.

Continuing the tradition, Dick's son Byron began electrical work with his dad and grandpa at eight years old.

Byron did on-the-job training and vo-tech throughout high school, which allowed him to become a full-time electrician right out of school.

To this day Dick and Byron continue to serve a great portion of Jackson County and the surrounding areas.

Riley Electric specializes in residential, rural, and commercial new construction or remodel work and are equipped with and aerial truck for overhead services.

Riley Electric is also a licensed Briggs & Stratton Home Standby System and Winco Generator dealer. Give Riley Electric a call today at 785-364-2821 for all your electrical needs.

A.D.S. is the most experienced Spray Polyurethane Foam roofing and insulation contractor in Northeast Kansas. We are a Q1 qualified contractor of BASF Foam Enterprises, the highest possible rated contractor, as well as a Level 1 contractor of ER Systems, also the highest rating available.

The self-adhesion qualities of SPF make it an excellent option for many applications, such as built-up roof, flat roofs, single-ply roofs, tanks, and insulation for the walls of metal buildings and new homes.

A.D.S. Distributing, Inc.
John & Dean Stous
785-364-2364 • Holton, Kan.

The photo above was taken while A.D.S. Distributing was insulating and waterproofing the north wall of the Jackson County Senior Citizens Building.

Everything For Your Lawn & Garden

TARWATER FARM & HOME SUPPLY

4107 NW TOPEKA BLVD., TOPEKA, KS
785-286-2390 • 800-894-2390
www.tarwaters.com

HHW - HOUSEHOLD HAZARDOUS WASTE OF JACKSON COUNTY

We accept the following items from Jackson County Residents for FREE: household cleaners, old and used paints & stains, lightbulbs, poisons, herbicides, aerosol cans, batteries.

Basically, if you don't know if you should throw it out, you can bring it to us.

When we receive items that can still be used we have a Re-issue room where residents can come and pick up household cleaners and paint for free.

700 East 4th St., Holton
Hours of Operation:
Tuesday-Saturday
8 a.m.-4:30 p.m.

Model shown: #5901854
With approved credit. Minimum monthly payment required. See Dealer for details.

Experience Suspension. - PLUS - 0% Financing!

Heinen Repair
785-945-6711
www.HeinenRepair.com

Horticultural Services

Horticultural Services is celebrating its 47th anniversary. It was started in 1970 by Carl J. Meyer, who still serves as president of the company. The company has three divisions: nursery, growing greenhouses and the retail garden center.

Horticultural Services grows trees, shrubs, perennials, grasses, groundcovers, vines, annuals (bedding plants), vegetables, poinsettias and sod.

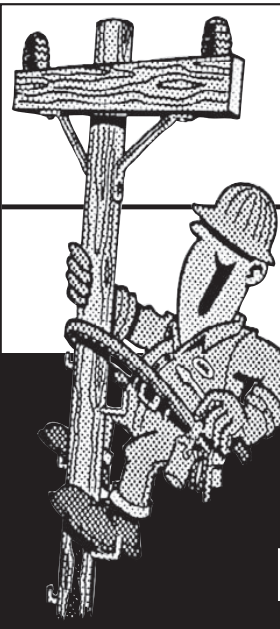
The business uses about 100 acres in rotation; so all may not be used at the same time.

The business grows between 75 to 100 varieties of trees; about 250 varieties of shrubs; over 20 varieties of perennial groundcovers; over 700 sizes and varieties of annuals; over 300 sizes and varieties of perennials; over 20 perennial grasses; and over 100 sizes and varieties of vegetables and herbs.

Plants that Horticultural Services grows are listed on the web site: hortservinc.com. Or you can simply type in Garden Center Manhattan Kansas and it will pull the web site up.

The Garden Center is open year round, 7 days a week (closed: Easter, Memorial Day, 4th of July, Labor Day, Thanksgiving and from noon Dec. 24 to Jan. 2).

Besides plants grown by the business, Horticultural Services also offers water plants, water pond supplies, fountains, statuary, tools, chemicals, soil amendments, garden seed, glazed and clay pottery, a large selection of containers, gift items, flags, benches and many garden related items.

McManigal Electric

Residential • Commercial
Farm • Service

Trenching & Overhead

Licensed • Insured
Experienced

Chris McManigal

785-935-2555
785-364-7893

Haug Construction, Inc.

- Basement Excavation
- Dump Truck Service
- Pond Work
- Waterline & Sewer Installation
- Sewer Cam
- Fill Sand, Rock, Black Dirt, Clay, Road Rock Hauled



785-364-3375

Steve & John Haug

13136 222nd Rd., Holton, KS 66436

YOU TEAR IT, WE REPAIR IT!

- * Furniture/Chairs
- * Boats, Motorcycles
- * Farm Machinery
- * Cars/Trucks

Chiles Upholstery Service

John & Glenna Chiles, owners

218 E. 5th, Holton
785-364-2824



SERVING THE COMMUNITY FOR 47 YEARS!

DON ASH & SON, INC.

CALL US FOR ALL YOUR HEATING & COOLING NEEDS!

LENNOX

Heating and Cooling

730 Vermont • Holton • 364-2417

MARK'S OVERHEAD DOOR SERVICE

RESIDENTIAL & COMMERCIAL GARAGE DOORS & OPENERS

GENIE **LiftMaster**

SALES - INSTALLATION - SERVICE

Ph: 785-582-4771 Fax: 785-582-0114

Mark Burdick, Owner
Silver Lake, KS

See us for all your remodeling and new construction work!



Bell Plumbing Inc.

Plumbing • Water Conditioning

417 E. 5th, Holton • 364-4434

Buy it, sell it, find it fast in the classifieds.

(785) 364-3141

Netawaka Fitness Center

“HOW DID such a state-of-the-art, 30,000 sq. ft. facility with an 8,000 sq. ft. heated pool get built in such a small town?” That question is often asked about the Netawaka Fitness Center.

The idea for this Netawaka facility was spurred 6 years ago by a group of residents who felt it would fill a void in the area. There is no such facility near this tiny burg located at the junction of Hwy. 75 and K9. And if done right, they believed, this new venue just might lead to a “rebirth” of the town.

Many small towns across the country are in trouble today. What’s needed for their survival and growth is something that sets them off and makes them “different”...by offering something that will lure people there on a regular basis.

Proof of that approach is now apparent in Netawaka, where the low rates at this non-profit fitness center in the center of town has attracted over 630 members.

Many of them from the surrounding 40-mile area drive there daily to use the facility’s 8,000 sq. ft. Heated Pool...Fully-Equipped Weight Room...Full-Size Basketball & Volleyball Court ... Cardio & Aerobics Equipment ... Walking Lanes ... Battering Cages ... Treadmills ... Upright & Recumbent Bikes ... Seated Steppers, Rowing Machines, Stair Climber ... Locker Rooms & Showers ... a Kids Zone with a Bounce House, etc.

But Back to Its Roots.

The funding for the facility started with the support of residents, who then reached out to a member of the Zwonitzer family.

The Zwonitzers grew up in this small town, where their parents operated the Snappy Inn Café (the small café area in the center is now named after it). The family shares fond memories of regular customers at the café and being members of the high school Hornets teams.

After visiting, listening and studying the plans, Bobbi Reiman, the youngest member of the Zwonitzer family, agreed to help complete the \$5 million structure.

“Yes, this is still my family’s ‘home town,’” she says. “We have many fond memories of growing up here, and are so proud to be able to give back in such a tangible way.

“We are fortunate to have had some success in business, and this is our way of sharing that good fortune with others. There’s a saying, ‘Give while you live, so you know where it goes.’

“And that surely fits this project. We’re so proud to see how people in the area have embraced this facility. It’s our hope that it contributes directly to their health, and add a spark to the re-growth of this small community.”

Membership Keeps Growing

Members can work out on their own, or sign up for a variety of classes, such as Water Aerobics ... Yoga ... Low Impact Training ... Kick Boxing Classes ... CPR Training ... and more.

The “Walking Lanes” around the exterior of the auditorium got a great deal of use during the past months.

“Not many local gyms and other venues have enough space for a beautiful walking lane like the Netawaka Fitness Center does,” says Juli Ellis of Kansas City, one of the Center’s advisors. “And here walkers can exercise during cold winter months or rainy spring days.”

Family memberships have particularly increased since additional “family-oriented” functions were added. The facility has also become a “gathering place” for retirees, who play card games, dominoes and checkers ... while others enjoy crafts, puzzles, quilting, knitting. And some come just to meet new friends and have interesting conversations.

Known for Its Friendly Staff

“We listen to our members,” says Scott Steffes, the center’s General Manager. “We learned there isn’t a lot for young people to do in the area, and we’re fixing that with our Kids Zone, as well as our basketball clinics during March Madness, etc. We have the equipment and functions to keep these young people busy, active and healthy!”

Members continually comment on how clean the place is, and about its friendly staff members. One recently said, “Instead of the Netawaka Fitness Center, they should call this place the ‘Netawaka Friendly Center!’”

In the months ahead, the outside of the Center will become as attractive as the inside, as the expansive landscaping plan again comes to life, including flowers, shrubs, trees and a recycling pond by the front entrance.

There’s also a colorful arrangement at the entrance to the town at the Hwy 75 & K9 junction, topped off by an 80-ft. windmill with a gold and red “sunflower” painted proudly on its fan.

Steffes grins broadly when he says, “This is such a grand venue. It’s a great feeling to see how this facility is enjoyed and appreciated by its members. Every day I see smiling faces here. It’s good to know these people are staying healthy mentally as well as physically.”

For a photo tour of the facility, check out its web site at www.netawakafc.com.

Kiss it goodbye in The Holton Recorder classifieds. Call 785-364-3141

Country Greenhouse

Janice Hollander, owner of Country Greenhouse east of Holton, loves growing things, from her vegetable garden to the different varieties of flowers and foliage available for house plants, to outside annuals and perennials. As a youth, her grandmother got her started on growing houseplants and how to make new plants from cuttings.

“Soon, I had all the windows in the house filled with a huge variety of greenery,” Hollander said. “I read everything I could get my hands on about different plants and how to grow them. If someone gave my mom magazines with plant articles in them, I would cut the articles out and make my own scrapbooks on plants.”

By the time Hollander got to high school, she told her parents she wanted a greenhouse. At that time, her school didn’t offer any vo-tech programs, and the only job training for girls was office-related, so her desire to have a greenhouse was “pushed to the background.”

After getting married and moving to Holton, Hollander said she got the chance to work part-time for Oscar Nowland at Holton Greenhouse. Her love for plants was increased, and soon, when she had the opportunity to purchase a small used greenhouse from a fellow greenhouse worker, her chance to have her own greenhouse business was realized.

“We put up our first small greenhouse, and the first year, I had it crammed full of as much as I could get in it,” she said. “From vegetables to flowers, I wanted to grow them all, so we soon put up a second greenhouse, then a third, until now we have six greenhouses full of plants plus an outside growing area.”

Country Greenhouse grows a large variety of flowers, from “the old standbys” to new trial varieties, Hollander said.

“We deal with a starter plug company in Canada and have been asked to trial new varieties of annuals and perennials. We grow them, then let them know which did well in our climate and were popular enough to grow again.

“If we find something new we like,” she said, “it becomes one of our regulars.”

Something new we have done in the last three years is grow winter vegetables. We have tunnels in our garden where we grow a wide variety of organically grown vegetables without heat all winter. This year we grew radishes, lettuce, spinach, carrots, Swiss chard, broccoli, cabbage, Pak Choi, kale, mustard, chervil, arugula and onions. Persons can call or come to the greenhouse and get fresh veggies. I also take orders from caterers and restaurants that want fresh veggies for their salad bars or special meals.

The greenhouses hold hundreds of hanging baskets with hundreds of varieties and combinations. Customers who want perennials enjoy shopping from the perennial beds outside, and in the fall, more than 3,000 mums and asters are available in the greenhouse’s growing field.

Country Greenhouse also tries new vegetable varieties each year, with more than 30 varieties of tomatoes and 20 varieties of peppers, along with several different varieties of cucumber, cantaloupe, watermelon, Brussels sprouts and other vegetables. Special orders are available for those who want to try new varieties and bring the seeds to grow.

“We also grow large prearranged orders of vegetable plants for persons growing farmers’ market gardens,” Hollander said. “Our intent is to try to provide a place where customers can find whatever they want for their gardens, from asparagus to zucchini.”

“All plants at Country Greenhouse are grown on site by staff members who give them a good start in the greenhouse climate and growing conditions,” Hollander said. Growing advice and instructions also are offered so that customers may have the best chance of success when they take their plants home.

“We enjoy seeing the work of our hands make other people happy and hope we can make the world just a little prettier too,” she said.

Country Greenhouse is located at 17080 246th Road northeast of Holton. For more information, call 364-3935.

Holton National Bank

Holton National Bank (Branch GNB) has been proudly serving Jackson County for more than 80 years.

HNB is a family-owned and operated business with 13 locations in Kansas and Colorado, including a wholly owned mortgage company.

Holton National Bank offers customers premium financial services, in a friendly, professional manner.

HNB employees have decades of banking experience and are excited to help you with your financial needs.

Holton National Bank offers a variety of services tailored to meet your needs. Loan products include residential real estate, home equity lines of credit, agricultural real estate, agricultural loans and leases and consumer loans.

A few deposit and teller services include checking, savings, CD and IRA accounts, online banking, free online bill pay, VISA gift cards, wire transfers, ACHS origination, Remote Deposit Capture and notary services.

Holton National Bank has two easily accessible locations in Holton: the main bank at 100 E. 5th and a branch at the 7-Eleven convenience store. You can also reach HNB at 785-364-2166 or visit www.holtonnb.com.

A.D.S. Distributing Inc.

A.D.S. Distributing Inc. is in its 37th year of providing the most energy-efficient solutions for roofing and insulation.

The business is located in rural Holton and offers alternatives for interior and exterior applications for roofing and insulation.

Their seamless, airtight and waterproof system not only insulates but also adds structural strength to a building.

A.D.S. is an experienced Spray Polyurethane Foam roofing and insulation contractor in northeast Kansas. The business is a Q1 qualified contractor of BASF Foam Enterprises, which is the highest possible rated contractor, as well as a Level I contractor of ER Systems, also the highest rating available.

To reach A.D.S., call 364-2364 or e-mail ADSdistinc@gmail.com

Kyle’s Construction

Kyle’s Construction offers a variety of construction services, including new construction, remodeling, kitchens, baths, painting, tile work, electric, plumbing, basements, garages, decks, doors, windows and more.

Owner Todd Kyle, who has more than 25 years of experience, has two full-time employees.

Free estimates are available. For more information, call 364-3606.

Al’s Overhead Door Service

Al’s Overhead Door Service Inc. of Topeka has been in business for 40 years and specializes in garage doors. The business is located at 5000 N.W. 35th St., Topeka, and may be contacted by phone at (785) 286-2555.



Denison State Bank

Spring is a good time to think about making changes to your banking, and Denison State Bank in Holton, Hoyt, Meriden and Topeka welcomes you to call, click or visit the bank about your banking and money.

If you have been considering building or remodeling your home, mortgage interest rates are still historically low to qualified borrowers.

Refinancing your current mortgage may have financial advantages, too.

Denison State Bank continues to be a strong and reliable lender to local ag producers, farmers and ranchers, and to local business owners.

As you get busier in the warmer months, take time now to look at your checking and savings accounts and make sure you understand the terms and conditions on how the accounts work. There are now many electronic and digital ways to manage and monitor your bank accounts any time of day.

Grimm's Gardens

Study after study has shown the importance of nature in our daily lives. From gaining vitamin D in the sunshine to faster healing rates in hospitals that have exposure to natural environments, it is clearly a part of healthy living.

As a child, I remember playing in the landscape rocks at church while my parents talked with friends and bringing my newly found treasure of roly polies home in my little hand. While I would be not so inclined to hold the squirming bugs now, I still have an appreciation for the life around me. I also remember working with my parents to collect little caterpillars off our parsley plants and raising them to become Swallowtail butterflies.

These are the kinds of memories and connections with nature that benefit adults and children. Well-designed outdoor spaces can help you share what you know with those children in your life. Maybe you know the names of the birds that feed in your backyard or maybe you know about native grasses – share the knowledge that you have!

At Grimm's Gardens we strive to create environments that will cooperate with nature. At our garden centers, we have many native plants that wildlife will call home. Work with our landscape designers to create a plan for a butterfly garden or native landscaping around your home.

The owners and staff at Grimm's Gardens know how important time with family is and how precious the time we have can be. Consider an outdoor room for entertaining guests and bonding with family. Many of our outdoor rooms and outdoor kitchens include a paver patio, sitting walls, night lighting, and a fire pit.

Bring your kids or grandkids out for a campfire complete with s'mores! Sit next to your loved one and watch the stars next to a toasty fire. Invite the neighbors over for a picnic or barbecue with your co-workers. The possibilities are endless.

We have often added a water feature near these patios and the trickle of the bubbling water is just... "ahh." Grimm's Gardens focuses on each customer's needs. We custom design our outdoor rooms to fit with your lifestyle.

Have a hot tub? We'll make a spot for it complete with steps and a towel rack. Working with some funny elevations? We can make nestled-in fire pits (even cozier) or raised patios (enjoy the view).

We also work to help our customers enjoy their homes. We want you to walk to your front door and think that you have the best house on the block. For some, this includes our lawn fertilization program or adding lawn irrigation for a beautiful lawn. (It is so much fun to be able to walk barefoot across your yard!) For others, our landscape maintenance program creates more time to enjoy being outside with family and friends rather than working.

Whether you are seeking to build an outdoor room, connect with nature, or have the best yard on the block, Grimm's Gardens can help. Call today to get started on your outdoor oasis.

Holton Tire & Service INC. YOUR TIRE HEADQUARTERS!



GET UP TO A **\$100** COOPER TIRES PREPAID CARD
When you buy a new set of 4 qualifying tires. 3/1/17 - 3/31/17

Oil Changes | Brakes
Lawn Mower Repair
Certified Briggs & Kohler
Repair Location

Holton Tire & Service INC.

500 Vermont Ave., Holton • 785-364-4532
Hours: 8 a.m.-5 p.m. Monday-Friday • 8 a.m.-Noon Saturday



Mark's Overhead Door Service

Mark's Overhead Door Service is a family-owned business that has been serving this area for more than 20 years.

Mark's Overhead Door Service specializes in sales, service and installation of garage doors, residential and commercial, and garage door openers.

Mark's Overhead Door Service also stocks most parts on their service trucks. And as they have always done, provide free estimates.

The business is located at 7321 NW 39th St. in Silver Lake. Contact the business at 785-582-4771.

Ray's Glass and Screen

Your one-stop shop for all glass and window needs is Ray's Glass and Screen.

Located at 410 Montana, the business is owned by Ray DeLay and has been open for more than 25 years. It is an authorized replacement window dealer and is open from 8 a.m. to 5 p.m. Monday through Friday.

Ray can install and repair plexi-glass, safety glass, insulated glass, mirrors, storm windows and doors. For more information, call Ray at 364-4502.

Tarwater

Tarwater Farm & Home Supply has been family-owned and operated since 1978. They strive for excellent customer service, as well as developing a relationship with their customers.

Located in Topeka, Tarwater's serves all the surrounding areas. Consistently competitively-priced, with large inventories of products homeowners want and need, Tarwater's sincerely appreciates their customers and wants to thank them for the privilege of serving them for so many years.

Please enjoy the rich history behind Tarwater Farm and Home Supply, from owner Rich Tarwater:

"Our founder, my father R.A. Tarwater, had been in the feed and seed business for 23 years, starting in a small gas station with a 1,600 sq. ft. warehouse. The family was very involved in the everyday business. Our mother kept the books, and my brother, sister and I came in every day after school and through the summer months. We pumped gas for a year until the farm and home business took off. After a couple years we built a bigger warehouse and concentrated on the farm and home business.

"We were blessed with continued growth and expanded again in 1984, adding another warehouse, knocking down the old rock gas station that served as our showroom, and building a new showroom and offices. We purchased a feed mill and elevator around 1994 to make our own line of feeds and do custom mixing.

"My parents retired and sold me the business in 1997. Along with my wife, Lisa, two of my children, Megan and Levi, our son-in-law Abe, and over 20 other committed employees, we continue to operate the business. Thanks to the loyalty of our great customers, many great employees, and God's blessing in our business, we continue to see growth.

"At the main store, we purchased another seven acres in 1999 and started adding warehouses. We now have over 38,000 sq. ft. of warehouse. Our showroom was updated in 2003 with over 5,000 sq. ft.

"In the fall of 2011 we added a state-of-the-art 2,000 sq. ft. bulk chemical facility to better serve our customers. We also started a brand new showroom and shop facility.

"In Feb. of 2012 our new showroom and shop was completed. Our 4,000 sq. ft. 3-bay shop is state-of-the-art. Our new showroom is over 16,000 sq. ft. complete with a mezzanine and stage area to display even more products. We have added lots of parking and a larger outdoor display area as well.

"In 2015 we added an 8,000 sq. ft. seed warehouse and treatment facility. It is state-of-the-art with a fully automated system for better and faster service. We thank our customers for their loyalty and look forward to serving them for years to come. Our mission is to treat others as we would want to be treated."

Don't Miss A Single Issue!



Local Coverage Where You Work, Play & Live

Catch up on sports, shopping deals, restaurant reviews, events, new businesses, politics, job openings, homes for sale, cars for sale and more with your local newspaper, **The Holton Recorder!**

Clip and mail with check or money order to:

The Holton Recorder

P.O. Box 311, 109 W. 4th
Holton, KS 66436

Name _____
Address _____
City _____ State _____ Zip _____
Phone Number _____

One-Year Subscription:
 Jackson County \$40.52 + \$3.48 tax = \$44 total
 Other Counties in Kansas \$47.42 + \$4.08 tax = \$51.50 total
 Out of State \$58 total

Mail to: The Holton Recorder, P.O. Box 311, Holton, KS 66436

The Holton Recorder

The Holton Recorder newspaper is noting its 150th consecutive year in business this year, making it one of the longest running businesses in the community - if not the longest running business.

The Recorder publishes two print editions each week - Monday and Wednesday - and also records the history of the community as it occurs with news, photos and videos at its website that can be accessed 24/7 - holtonrecorder.net

The Recorder also publishes a weekly Jackson County Shopper local advertising print publication that is delivered by direct third-class U.S. mail to non-newspaper subscribers in the community.

Local and regional businesses utilize The Recorder's loyal readership and circulation base for advertising purposes because of its popularity, consistency, dependability and trustworthiness.

The cost to advertise with The

Recorder is also very inexpensive. The advertising mission of The Recorder is to connect solid, potential customers and clients with local businesses.

The Recorder also utilizes twitter to report important local news, local weather and local sports as they occur in the community. You can follow The Recorder on twitter @HoltonRecorder

While the methods of delivering news have multiplied in the last 150 years, The Recorder's

caretakers today contend that the tenets of good, professional journalism have not changed.

David and Connie Powls have owned The Recorder for 20 years. This is their 35th year in the newspaper business.

To contact The Recorder for subscription rates and/or to advertise goods or services, call 785-364-3141 or send e-mail to holtonrecorder@giantcomm.net



STIHL

PICK YOUR POWER
BATTERY AND GASOLINE TRIMMERS FROM
\$129⁹⁹

FSA 45 FS 38

INTRODUCING
STIHL LIGHTNING BATTERY SYSTEM

Photos are for informational purposes only. © 2017 STIHL

HOLTON
Farm & Home
POWER SALE

STIHL LIGHTNING BATTERY SYSTEM™ **STIHL**

THE POWER OF STIHL IN A BATTERY.

AI SERIES Integrated batteries make this system perfect for smaller yards and condominiums. Simply plug in to recharge!

FSA 45 TRIMMER **\$129⁹⁹**
Features an integrated battery
Lightweight, adjustable trimmer ideal for trimming and edging small residential yards

BGA 45 BLOWER **\$129⁹⁹**
Features an integrated battery
Lightweight (only 4.4 lbs.) and portable with integrated 18-volt battery

HSA 45 HEDGE TRIMMER **\$129⁹⁹**
Features an integrated battery
Clear a 20"-wide hedge, more than a football field long, on a single charge*

AK SERIES With multiple battery options, this system is ideal for maintaining suburban yards.

FSA 56 TRIMMER **\$199⁹⁹**
With AK 20 Battery & AL 101 Charger
Trim the length of five football fields with a 10.5" swath—all in one charge*

BGA 56 BLOWER **\$199⁹⁹**
With AK 20 Battery & AL 101 Charger
Clear a 36" sidewalk, seven football fields long, on a single charge*

HSA 56 HEDGE TRIMMER **\$249⁹⁹**
With AK 20 Battery & AL 101 Charger
Up to 40 minute run time*, 18" double-sided ground-forged blades, and lightweight (6.1 lbs.)

MSA 120 C-BQ CHAIN SAW **\$299⁹⁹**
With AK 20 Battery & AL 101 Charger
Battery-powered chain saw with excellent cutting performance, featuring a 10" or 12" bar

IT'S SPRING REMODELING TIME!

CALL US! We can help you with all your Home Remodeling Needs!

We Do...

- New Construction • Remodeling
- Kitchens • Baths • Decks • Doors & Windows
- Painting • Tilework • Electric
- Plumbing • Basements & Garages

Kyle's Construction
FREE ESTIMATES/Insured
364-3606 • Holton, KS

Frost Yourself For Spring!
Spring Decor For Your Home Inside and Out

Permanent Flowers
Kitchen Gadgets • Dishware
• Wind Chimes • Wreaths
• Garden Statues • Flags • Jewelry
• Scarves • Lotions • Candy
• Soda Fountain • Toys
• Greeting Cards

Unique - Different
That is... **KOGER VARIETY**
415 New York, Holton, Kan.
364-3321

Regular Hours:
Mon-Fri: 9 am-6 pm
CLOSING TUES. @ 5:30 pm
Sat.: 9 am-5 pm
CLOSED SUNDAYS.

HUSTLER **SPRING SAVINGS ARE HERE**
Featuring Heavy-Duty Frames and Welded Steel Decks

STARTING AT \$2,799*
RAPTOR
Premium performance under \$3,000.

STARTING AT \$3,899*
RAPTOR SD
No competition. Hands down.

STARTING AT \$6,299*
54" cut
FASTRAK
Lifetime deck and frame warranty.

Financing available.
Payments as low as \$67.⁰⁰ a month
0% for 48 months
(with approved credit)
*Other Models Available
We Service What We Sell.

HOLTON Farm & Home
Locally Owned and Operated
Hwy. 75 & 6th St., Holton, KS • 785-364-2162

Mon. - Sat. 7 a.m. - 6 p.m.
Sunday 9 a.m. - 5 p.m.

NOVUS MasterCard VISA

Grimm's Gardens
Professional Landscape Design & Installation

785.459.2586
www.GRIMMSGARDENS.com

GRIMM'S GARDENS

Home Repair Grants and Loans

Homestead Affordable Housing has several USDA home repair grants/loans programs to assist qualified homeowners.

- **Housing Preservation Grant (HPG)** - available to very low income seniors in Jackson County for emergency and essential home repairs.
- **504 Home Repair Loan/Grant program** - up to \$20,000 at 1% interest available for emergency and essential home repairs.

*Income restrictions apply *Must be owner occupied

Contact: Brian Boeckman, Single Family Housing Director
Homestead Affordable Housing, Inc.
603 Pennsylvania Ave., Holton, KS 66436
785-364-0110
E-mail: brian@homesteadks.org

It's a 'Slam Dunk'!

THAT'S what people say after spending time at the Netawaka Fitness Center for a Day Pass costing only \$7.00! For that they can swim in our 8,000 sq. ft. Heated Pool...pace on our Indoor Walking Lanes...shoot buckets in our Full-Size gym...work out in our first-class Weight Room...and a whole lot more.

It Gets Even Better. Check these multiple Day Passes rates: Only \$10 for two adults...just \$5 for kids under 14...and only \$20 for a family of five!

We're offering these low rates because we want you to *experience* this 30,000 sq. ft. state-of-the-art facility, then consider becoming a member.

NO WONDER WE'RE GROWING FAST! We now have over 640 members who enjoy what this non-profit facility offers at rates they won't find elsewhere.

Only \$30 a month for a single adult. That's *just \$7.50 a week.* For retirees 65+, it's even lower--\$25 a month or \$6.50 a week.

For a photo tour, check our web site at www.netawaka.com

Netawaka FITNESS CENTER
233 White Way, Netawaka
Junction of Hwy. 75 & K9
785/933-2616

McManigal Electric

Chris McManigal of McManigal Electric offers residential, commercial and farm electrical services in the community.

McManigal Electric also does trenching and overhead electrical work and is licensed and insured.

To reach Chris, call (785) 935-2555 or 364-7893.

JCHHW CENTER

The Jackson County Household Hazardous Waste Center accepts household cleaners, old and used paints and stains, light bulbs, poisons, herbicides, aerosol cans and batteries for free.

The center has a re-issue room where residents can come and pick up leftover household cleaners and paint for free.

The county department is located at 700 East 4th St. in Holton. Hours are 8 a.m. to 4:30 p.m. Tuesday through Saturday.

Early plants are ready!
Pansies & Violas are blooming and its beginning to look like Spring!

We have everything you need to get your garden started and growing:

- Seed Potatoes
- Bulk Garden Seeds
- Onion Sets and Plants
- Asparagus Roots
- Strawberry Plants
- Pansies and Violas
- Cabbage, Broccoli, Cauliflower, Brussels Sprouts, Kale, Collards
- Romaine and Leaf Lettuce plants

Like us on Facebook:
'Country Greenhouse Business Page' and watch for our *web specials!*

Country Greenhouse
17080 246th Rd., (NE of Holton) • 785-364-3935
(4 miles east of Holton on Hwy. 116 to Road V, 2 miles north to Road 246, 1/4 mile east, follow the signs.)
OPEN Mon. - Sat. 9 a.m. - 5:30 p.m., CLOSED Sundays