



New events noted for Pride of Hoyt

■ 31st annual festival is this weekend

By Brian Sanders
This year's Pride of Hoyt Days celebration — the 31st-annual event at Hoyt City Park — will offer visitors to the park on Saturday and Sunday a wide variety of new activities along with some of the festival's favorites, according to event organizer Nancy Bailey.

Along with the parade, the arts and crafts show, the mud volleyball tournament and the fried chicken dinner that have been Pride of Hoyt Days staples for years, there's also a model train display, a new "corn hole" tournament, a "yard game" area, laser tag and a video game trailer.

This year, the event will honor longtime Hoyt residents Jim and Marsha Seematter, whom Bailey said will serve as grand marshals of the parade.

"Marsha had a day care center for years and years, and she 'brought up' a lot of the kids in the community through her day care," Bailey said. "And they've both always been really involved in the community, through the

school ballgames, through all the 4-H things — they're very supportive of anything going on in the community."

The Seematters were "just thrilled" upon learning that they were chosen by the Pride of Hoyt Days Committee to serve as the parade's grand marshals, Bailey said.

"They were so humbled and excited," she said. "They were so taken back by it, but they were really appreciative that we were honoring them."

This year, the annual concert and dance at the city park will feature Topeka band Departure, whom Bailey said were a last-minute addition to the event lineup. She described Departure as an "all-around rock" group similar to the event's originally-booked band.

"We had Nucklehead Jones booked, and then they notified us that because of a family situation with one of their band members, they were going to have to

Continued to Page 5

Painted Ladies abundant

By Ali Holcomb
Thousands of Painted Lady Butterflies have been spotted in northeast Kansas recently, and although they can be easily mistaken for Monarchs, this species is unique on its own.

The Painted Lady Butterflies are migratory, traveling from the southern United States and Mexico to the northern U.S. and Canada each year. Prone to mass migrations, the Painted Lady Butterfly is reportedly the most commonly found butterfly in the world.

The Painted Lady Butterfly's life span is short — less than three weeks. So its main goal is to migrate, mate and reproduce to continue the species.

This butterfly can have two generations per year in Kansas, according to experts at Kansas State Research and Extension.

The adult female butterflies lay their eggs, which are the size of a pinhead, onto plants. The eggs, which are green and barrel-shaped, then hatch in three to five days as caterpillars.

Continued to Page 14



Ever been in a hot air balloon? On Friday, some Jackson Heights Elementary School students got the chance to go inside a hot air balloon that was brought to the school by Chris Tantillo of Topeka's Sail Away Adventures. In the top photo, Tantillo accompanied fourth, fifth and sixth-grade students as they stepped inside the 85-foot-tall balloon, which Tantillo said holds about 100,000 cubic feet of air. The balloon, also shown in the photo above, had to be kept on its side during Friday's visit because it was too windy to stand it up. In any case, the balloon brought delight to both students and Jackson Heights staff. "There's just something about a hot air balloon that makes kids out of grown-ups," Tantillo said.

Photos by Brian Sanders

Tutts leave \$100K to humane society

By Ali Holcomb
The late Frances Tutt, one of the founders of the Heart of Jackson Humane Society, is being remembered for her love of animals and her generosity.

Frances, who died in 2015 at the age of 91, and her husband, Don, who died in 2011, lived on a farm near Denison for 30 years.

The couple also lived in Topeka, and they were recently recognized there by the Helping Hands Humane Society in Topeka for gifting the shelter \$100,000 from a family trust. The Tutts made an identical \$100,000 donation to the Heart of Jackson Humane Society here, it was reported.

Frances filed the paperwork to charter the society in Jackson County in May 1975, according to longtime Heart of Jackson volunteers and co-directors Joannie Dannenberg and Betty Flemming. Dues were \$3.

"Her dream was to have a shelter in the county for the animals," Dannenberg said.

The humane society original-

ly worked with Hilltop Animal Clinic located on P Road. The clinic would house and shelter the strays and would bill the humane society monthly.

"We'd put pictures of dogs in *The Recorder* and then when they built the Walmart, I would sit there with the animals and applications," Dannenberg said.

Through donations, the society was able to build a shelter at 414 East Eighth St. in Holton in May 2005.

"We're so thankful we got it built before she passed away," Flemming said of Frances. "She was ahead of her time. Rescue groups were unheard of back then."

Dannenberg and Flemming both agreed that Frances could remember every single dog she ever rescued.

"She told me she spent many sleepless nights worrying about the animals," Dannenberg said. "She had frames filled with dog pictures on her walls. They were like children to her."

Continued to Page 5

Purple Heart Profiles

Hollenbeck wounded while fighting in Korea

Editor's note: This is the 66th in a series of stories about past and present Jackson County residents who earned the Purple Heart Medal, which is awarded to military personnel wounded or killed in the line of duty.

The names of those profiled in these stories are among those placed on a special monument for Purple Heart Medal recipients now standing in Holton's Linscott Park.

Charles Ray Hollenbeck graduated from Holton High School in 1949, and little more than two years later, he was fighting in the Korean War.

Although not much is known about how Hollenbeck earned his Purple Heart Medal, he did go on to survive his wounds and lead a long life after his military days were through.

Born Oct. 10, 1930, in Holton, the son of Ira and Rosa Hollen-

beck, "Chizzy," as he was nicknamed at HHS, lettered in track and field and made plans to attend Baker University after high school. He joined the U.S. Army five days after his 21st birthday and traveled to Fort Knox, Ky., for basic training with the Third Armored Division.

"As a prospective reconnaissance tank crewman, he received special training in scouting and patrolling, intelligence and in driving and maintenance of various Army tracked and wheeled vehicles," *The Holton Recorder* stated in its April 28, 1952 edition.

While on leave from basic training, Hollenbeck married Joyce Lange on Dec. 23, 1951. Joyce would move to Hiawatha while Charles was shipped off to Korea to fight with the Seventh Infantry Division.

Continued to Page 14



At the recent Holton National Bank community appreciation dinner, held in conjunction with Cruise Night, a long line snaked its way around the east side of the Jackson County Courtyard to get a free dinner of pulled pork sandwiches, beans, chips and bottled water served by bank personnel, including, from left to right in the photo above, Laura Stauffer, Susan Mulroy, Jenny Reed, Rebecca Gann and Samantha Mellies. About 675 dinners were served that evening, with bank president Ken Glennon saying the dinner served "probably the longest line I've ever seen" in the community dinner's history.

Photo by Brian Sanders



TUESDAY'S FORECAST
AM Showers/T-Storms, High 84
See our weather forecast on Page 2.



COME PLAY BINGO!

FOR HOURS, SPECIAL SESSIONS AND ADDITIONAL INFORMATION PLEASE VISIT [PRAIRIEBAND.COM/BINGO](http://prairieband.com/bingo)

15 MINUTES SOUTH OF HOLTON OFF HWY 75



Must be 21 years of age or older to gamble. Minimum age to play Bingo is 18. Owned by the Prairie Band Potawatomi Nation. Getting Help is Your Best Bet. Call the confidential toll-free Problem Gambling Helpline at 1-800-522-4700.

DISTRICT COURT NEWS

Traffic

Matthew C. Bell, Fort Riley, speeding, operating a motor vehicle without a valid license, registration violation, diversion.

Samantha A. Chamberlain, Topeka, no proof of insurance, \$381.

Randal D. Gerhardt, no seat belt, \$30.

Evan J. Hammond, Horton, registration violation, \$208.

Caleb R. Hidalgo, Topeka, driving while license cancelled/suspended/revoked, \$658.20.

Jessy S. Lake, Hoyt, duty of driver to report upon damaging unattended vehicle/property, \$358.

Moiria E. Maddox, Kansas City, Mo., operating a motor vehicle without liability insurance, \$1,328.

Daryl E. Merryfield, Topeka, driving on right side of roadway required, \$264.

Christopher L. Patrick, Nortonville, driving under the influence, \$1,378.

Edwin D. Perez-Vasquez, Topeka, operating a motor vehicle without a valid license, \$233.

Shaylene Perry, Topeka, no proof of insurance, \$509.

Claudia I. Serna, Sioux City, Iowa, driving while license cancelled/suspended/revoked, \$208.

Mariah D. Shopteese, Mayetta, transporting open container, \$228.

Criminal Dispositions

State of Kansas vs. Torey N. Truitt, Topeka, possession of methamphetamine, possession of drug paraphernalia; sentenced to 17 months imprisonment, suspended; placed on 18 months probation and assessed court costs.

State of Kansas vs. Claudia Aniles, Holton, disorderly conduct; sentenced to 30 days

in jail, suspended; placed on six months probation and fined \$100 plus court costs.

State of Kansas vs. John M. Benedict, Topeka, possession of marijuana; sentenced to six months in jail, suspended; placed on six months probation and fined \$200 plus court costs.

State of Kansas vs. William Miller, Mayetta, possession of marijuana; sentenced to six months in jail, suspended; placed on 12 months probation and assessed court costs.

State of Kansas vs. Shirley M. Rimpley, Kansas City, assault on a law enforcement officer; sentenced to 12 months in jail, suspended; placed on probation and fined \$100 plus court costs.

State of Kansas vs. Shirley M. Rimpley, Kansas City, disorderly conduct; sentenced to 30 days in jail, suspended; placed on probation and fined \$100 plus court costs.

Filed
State of Kansas vs. Richard Bungard, Topeka, possession of methamphetamine, possession of drug paraphernalia, driving while license cancelled, suspended or revoked, no proof of insurance.

State of Kansas vs. Curt D. VandeVelde, St. Marys, theft.

State of Kansas vs. Curt D. VandeVelde, St. Marys, theft.

Civil Dispositions

Board of County Commissioners of Jackson County, Kansas vs. Aaron Bellinghausen, Department of Veterans Affairs, Household Finance Corporation III, Sally Koloff, formerly known as Sally Alice Webb, Sally Koloff, Jonathan Lee Edwards, James L. Banaka, Rubber Workers Local 307 Credit Union, nka AZURA, Terri Thornton, also known as

Terri Thornton, Rural Housing Service, Amber D. Ellis, Torrey Henry, Frank D. Taff, Attorney at Law, Robert L. Baer, Trustee, Eric L. Collins, Douglas W. DeVader, Mary E. Fuqua, Farmers State Bank, Harper Snyder, Tatum P. Snyder, Director of Taxation, State of Kansas Department of Revenue, Children and Families Services, formerly known as Department of Social and Rehabilitation Services, Lloyd G. Ladusch, Wittwer Construction Inc., Wittwer Construction Company Inc., Allen Fankhauser, Dan Wittwer, Zurich North American Insurance Company, Fidelity and Deposit Company of Maryland, Shirleene Seymour, Davis L. Scofield, Connie L. Scofield, Brad Smith, Martin DeVader, Dana M. DeVader, Kenneth L. Carlat, Marie J. Carlat, Denison State Bank, Clarence E. Kuone, James M. Bailey, Tina M. Bailey, Kansas Blue Cross Blue Shield Credit Union, Donald Spencer, Klenda Aussterman L.L.C., Shannon Stovall, Lisa L. Stovall, David J. Gordon, April J. Gordon, Mary Thomasson, Jon E.C. Brown, Board of County Commissioners and related estates, seeking judgment of taxes on properties as specified; case settled.

Ford Motor Credit Company L.L.C. vs. Stacy A. Harvey and Dale J. Harvey, sought judgment of \$7,765.19 plus interest and court costs; dismissed.

Discover Bank vs. Jalen Chance, sought judgment of \$2,450.52 plus interest and court costs; dismissed.

Discover Bank vs. Misty Herbster, sought judgment of \$14,336.72 plus interest and court costs; granted.

Filed
State of Kansas, Department for Children and Families vs. Maribell Borchering, seeking judgment of \$5,024 plus interest and court costs.

Discover Bank vs. Jalen Chance, sought judgment of \$2,450.52 plus interest and court costs; dismissed.

Discover Bank vs. Misty Herbster, sought judgment of \$14,336.72 plus interest and court costs; granted.

Marriage Licenses

Hunter D.G. Ramage, 20, Hoyt Skye T. Butchec, 21, Hoyt

Eric A. Adee, 58, Silver Lake Julie A. Swartz, 52, Silver Lake

Tim R. Mick, 54, Holton J. Sandra Gehrt, 54, Westmoreland

Tim R. Mick, 54, Holton J. Sandra Gehrt, 54, Westmoreland

Tim R. Mick, 54, Holton J. Sandra Gehrt, 54, Westmoreland

Tim R. Mick, 54, Holton J. Sandra Gehrt, 54, Westmoreland

Tim R. Mick, 54, Holton J. Sandra Gehrt, 54, Westmoreland

Limited Civil Dispositions

Rural Health Resources of Jackson County vs. Morgan Thompson, sought judgment of \$4,565.67 plus interest and court costs; granted judgment of \$4,286.63 plus interest and court costs.

Rural Health Resources of Jackson County vs. Andrew Kirkevold, sought judgment of \$560 plus interest and court costs; granted.

Rural Health Resources of Jackson County vs. Jason Stavropoulos, sought judgment of \$1,889.25 plus interest and court costs; granted judgment of \$1,615.75 plus interest and court costs.

Filed
LVNV Funding L.L.C. vs. Darla Beatty, seeking judgment of \$1,745.43 plus interest and court costs.

McElroy's Inc. vs. Jeanette Stites, seeking judgment of \$658.69 plus interest and court costs.

Denison State Bank vs. Karen I. Daubon, seeking judgment of \$787.39 plus interest and court costs.

Denison State Bank vs. Karen I. Daubon, seeking judgment of \$787.39 plus interest and court costs.

Denison State Bank vs. Karen I. Daubon, seeking judgment of \$787.39 plus interest and court costs.

Denison State Bank vs. Karen I. Daubon, seeking judgment of \$787.39 plus interest and court costs.

Denison State Bank vs. Karen I. Daubon, seeking judgment of \$787.39 plus interest and court costs.

Denison State Bank vs. Karen I. Daubon, seeking judgment of \$787.39 plus interest and court costs.

Denison State Bank vs. Karen I. Daubon, seeking judgment of \$787.39 plus interest and court costs.

Denison State Bank vs. Karen I. Daubon, seeking judgment of \$787.39 plus interest and court costs.

County officers investigate traffic accidents

The Jackson County Sheriff's Office has reported the following accidents:

■ At 9:14 p.m. on June 9, Benjamin Boyd, 18, was traveling south on Kansas Highway 16 near 214th Road when his vehicle struck a deer in the road. Boyd's 1999 Chevrolet sustained damage to its front bumper that was listed at more than \$1,000. It was towed from the scene.

■ At 1:29 p.m. on June 10, John McCready, 62, Auburn, was traveling south on U.S. Highway 75 near 162nd Road when his vehicle struck a deer in the road. McCready's 2013 Chevrolet sustained damage to its front bumper and hood that was listed at more than \$1,000. It was towed from the scene.

■ At 7:02 a.m. on July 12, Stacey Langley, 30, Livingston, Texas, was driving south on E Road near 158th Road when her vehicle left the road to the

right and struck a sign owned by the Kansas Department of Transportation. Langley's 2014 Nissan sustained damage to its front bumper that was listed at more than \$1,000. It was towed from the scene.

■ At 2:27 p.m. on July 16, Christopher Clark, 39, Wamego, was steering his 2000 GMC into a parking stall at Walmart in Holton when he pulled too far and his vehicle struck the bumper of a parked car. Clark's GMC sustained minor damage that was listed at less than \$1,000.

The parked vehicle, a 2001 Mercury, was owned by Jason Scott of Goff and it sustained minor damage to its bumper and hood.

■ At 4:30 p.m. on July 21, David Bascom, 66, Delia, was turning the 2013 semi he was driving west onto 142nd Road from E Road when it struck a vehicle attempting to pass the

semi. The other vehicle was a 2003 Ford driven by Zacery McCullough, 24, Delia.

The semi, which was owned by Freight Logistics of Emporia, sustained damage to its left side that was listed at more than \$1,000. The Ford sustained damage all along its right side and front bumper that was listed at more than \$1,000.

■ At 8:09 p.m. on July 22, Todd Morey, 53, Hiawatha, was traveling north on U.S. 75 near 278th Road when his vehicle struck a deer in the road. Morey's 2005 Lincoln sustained damage to its front bumper, left front quarter panel and hood that was listed at more than \$1,000.

■ At 1:27 a.m. on Aug. 6, Alexis Jones, 22, Circleville, was driving north on Kansas

Highway 79 just north of the K-16 intersection when her vehicle struck a cow in the road. Jones' 2001 Chevrolet sustained damage to its front bumper and hood that was listed at more than \$1,000.

■ At 5 a.m. on Aug. 5, Brandon Rodewald, 16, Hoyt was traveling east on 118th Road when his vehicle left the road and then struck a fence, some pigs and a home owned by Douglas Hansmeier of rural Mayetta.

Rodewald's 2007 Toyota sustained damage to its front bumper, hood and windshield that was listed at more than \$1,000. It was towed from the scene.

Rodewald received citations for reckless driving, no license on person and speeding.

Arrests reported in county

The Jackson County Sheriff's Office has reported the following arrests:

■ On Aug. 10, Andre Guliford, 50, Topeka, was arrested on charges of driving under the influence, driving while suspended and having no proof of liability insurance.

■ On Aug. 11, Jamie Perron, 45, Topeka, was arrested on a criminal warrant on a charge of motion to revoke bond.

■ On Aug. 11, Robin Heenan, 39, Ottawa, was arrested on a traffic warrant on a charge of failure to appear.

■ On Aug. 11, Miranda Fisher, 25, Emporia, was arrested on a criminal warrant on a charge of failure to appear.

■ On Aug. 11, Steven Duhon, 34, Abbeville, La., was arrested on charges of driving while suspended, fleeing and eluding law enforcement, possession of illegal drug paraphernalia and possession of marijuana.

■ On Aug. 11, Ashley Clay, 25, Blue Rapids, was arrested on a criminal warrant on a probation violation charge.

■ On Aug. 13, Jerry Bowers, 39, Topeka, was arrested on a limited action warrant out of Shawnee County.

■ On Aug. 11, Mariha Adcock, 34, Topeka, was arrested on a traffic warrant on a charge of failure to appear.

■ On Aug. 12, Lacey Jones, 26, Seneca, was arrested on a charge of driving while suspended.

■ On Aug. 13, Larry Morris, 60, Holton, was arrested on charges of driving under the influence and driving while suspended.

■ On Aug. 13, Mario Francisco-Pascual, 48, Holton, was arrested on charges of operating a motor vehicle without a license and driving while declared a habitual violator.

Continued to Page 3

WILSON'S DIRECT MOTORS & TIRES
Just west of Holton on Hwy. 16
(785) 364-1915

Simplicity
Model Shown: 2691321

COUNTRY CLIPPER
Model Shown: Edge XLT

FERRIS
Model Shown: 5901581

HEINEN
Repair Service Inc.
Lots more than just repair!
Valley Falls - 785.945.6711 - HeinenRepair.com

2017 Model Year-End Clearance
ALL in-stock
Lawn Mowers:
Ferris, Simplicity, & Country Clipper
HUGE Savings
PLUS 0% Financing
Options*

*Savings vary by model. Valid on in-stock mowers only. With approved credit. Minimum monthly payment required. See Dealer for details.

Farming is your livelihood, and it's our business to help protect that.

Farm/Ranch Business Insurance
Business Succession

We make it simple to help you select the coverage that's right for you today and provide options for the future of your growing operation.
Call today to see how we make insurance simple.

FARM BUREAU FINANCIAL SERVICES
Insurance • Investments

Robert Wareham 521 Arizona Holton, KS 785-364-2111
Mitchell Nicol 521 Arizona Holton, KS (785) 364-2111
Casey Patterson 521 Arizona Holton, KS (785) 364-2111

Services & services offered through FBL Marketing Services, LLC, 5400 University Ave., West Des Moines, IA 50266, 877860-2904. Member SFC, Farm Bureau Property & Casualty Insurance Company, Western Agricultural Insurance Company, Farm Bureau Life Insurance Company, West Des Moines, IA. *Affiliate Company providers of Farm Bureau Financial Services P/C#44, 2 (2-17)

Today's Weather

| | | | |
|-------------------------------|--|---|---|
| Tuesday 22 | | AM showers/T-storms likely; afternoon clearing | High: 84 Low: 56 Precip: 70% |
| Wednesday 23 | | Sunny | High: 81 Low: 57 |
| Thursday 24 | | Mostly sunny | High: 81 Low: 60 |
| Friday 25 | | Partly sunny | High: 81 Low: 62 |
| Saturday 26 | | Partly sunny | High: 82 Low: 62 Precip: 20% |

BRING CUSTOMERS INTO YOUR PLACE OF BUSINESS!
You Could Be Advertising In This Prime Spot!

Call Errin, Shannon or David
at The Holton Recorder (785) 364-3141
and reserve this spot as a weather sponsor today!

TRUSTED AROUND THESE PARTS FOR 65 YEARS.

Small repairs, large installations and everything in between.
Contact us. We're ready 24/7.

McElroy's (785) 266-4870
www.mcelroys.com
PLUMBING • HEATING • AIR CONDITIONING

A Prayer for Northeast Kansas and the United States of America
Lord Jesus Christ, Son of the Living God,
bring your light and your life to Jackson County, Nemaha County, Brown County, Doniphan County, Atchison County, Jefferson County and Pottawatomie County, and may you cause something so wonderful to happen here, that it will cause the ears of everyone who hears it to tingle.

South Brown County Ministerial Association

MENTAL HEALTH MATTERS

Presented by
Kanza Mental Health & Guidance Center
RUNNING ON HALF-EMPTY?

Research suggests that those who see the "glass is half full" are likely to enjoy better health, greater longevity, and a higher degree of daily satisfaction than those who see the "glass as half empty." While no one is saying that we should laugh in the face of every challenge and setback that we encounter, it certainly helps to have a positive attitude. What many people do not realize is that it is possible to adopt an optimistic attitude simply by learning to cope with life in a positive manner. If you find that you are constantly anticipating that things are going to go wrong, you might want to consult with a therapist about changing your thinking.

P.S. Cognitive-behavioral therapy (CBT) helps people develop alternative ways of thinking and behaving that help reduce their psychological distress. When you realize you have been seeing the world around you unfavorably, it is time to make a change. We know how difficult it is to convert negative thoughts to positive thoughts, and we can help. Our qualified therapists specialize in helping our patients make changes to improve their quality of life. There is no reason to wait. Call to make an appointment today.

OFFERING HOPE FOR A HEALTHIER TOMORROW.
KANZA Mental Health & Guidance Center
713 Idaho Avenue, Holton, KS 66436 • (785) 364-4536 • www.kanzamhgc.org

Kaitlin Meade, LCP

Here's What Morton Customers Say

"Our first building was built in the early 1960s, and our next building will be built in 2012, and we feel very secure with a company like Morton and their longevity and their quality."
David J.

Call to discuss your building needs
Eight offices serving Kansas
800-447-7436
mortonbuildings.com

MORTON BUILDINGS
mortonbuildings.com

The statements and opinions about products expressed here are those of specific customers and should not be construed to represent all buildings or products sold, manufactured, distributed or constructed by Morton Buildings. Copyright Morton Buildings 2012. All rights reserved. A listing of GC licenses available at mortonbuildings.com/licenses.aspx. REF CODE 043.

GENERAL PURPOSE | FARM | COMMERCIAL | EQUESTRIAN

MEMORIES

Compiled from the Holton Recorder archives
by Kendra Moppin

5 Years Ago

Week of Aug. 20-26, 2012

A plane crashed Thursday evening, Aug. 16, on N Road west of Holton. The three men in the plane survived the crash, however, with one of the men able to walk away from the incident relatively unscathed. According to Jackson County Sheriff Tim Morse, the plane's cabin filled with smoke and began experiencing engine trouble, which caused it to begin to rapidly descend.

To showcase Jackson County artists, an "art walk" has been set for Friday, Aug. 31, around Holton's Town Square. The event was organized by Amy Cyphers and Katie Morris, and will feature more than 15 "stops" at businesses featuring local artists of all mediums.

Circleville residents TeriAnn Moneymaker and Heath DeLany are the new owners of Circleville Marketplace, it was reported. The couple has extended the store's hours, as well as several other services since taking ownership on Aug. 1.

Kansas Gov. Sam Brownback recently honored Abigail Schlotter of Holton, a kindergarten student at Colorado Elementary School, for being one of Kansas' top readers in the "Read Kansas Read" summer program. Schlotter joined 19 other young readers for a picnic and celebration at the governor's mansion.

Clark Chevrolet in Holton is celebrating 50 years of service, it has been announced.

10 Years Ago

Week of Aug. 20-26, 2007

Fresh Start Learning Center of Holton, a program that allows high school-age or older students whose classes have already graduated to receive a diploma from their sponsoring high schools, is beginning its 10th year, it has been announced. Three new teachers have also joined the staff. They are Megan Montgomery, Sherri Rokey and Denise White.

The Royal Valley board of education unanimously approved the addition to the Royal Valley Elementary School at a special board meeting on Monday, Aug. 20. The addition to the elementary school in Hoyt will be constructed with two levels and will include nine new classrooms.

The Holton Recorder's new printing press is installed and is operating at about 50 percent capacity, it has been announced. The Monday, Aug. 20, 2007 edition of the paper was the first to be printed on the new press.

After 22 years of banking service, Phyllis Scott of Holton National Bank has announced her retirement.

15 Years Ago

Week of Aug. 20-26, 2002

The Holton Optimist Club recently presented its annual Teacher of the Year Awards. The Grades 6-12 Teacher of the Year is Debbie Harshaw. The K-5 Teacher of the Year is Robin Fernkopf. Tom Davies presented the awards.

According to Holton Community Hospital administrator Leonard Hernandez, HCH has more than doubled the number of physicians serving it in recent years, without actively recruiting. Currently, eight physicians have practices in Jackson County and serve HCH, Hernandez said.

Work began last week on the



The Holton Recorder's weekly "Memories" column now includes a "Blast From The Past" photo from the community's earlier days, from the files of The Recorder. This first photo shows a local businesswoman hard at work on the landline phone back in 1979. Can you name her? We'll identify her next week along with the name of the first person to call us at 364-3141 with the correct name.

Mayetta downtown sidewalk improvement project, it was reported.

The grand re-opening of Conoco Food Mart in Holton is scheduled for this week, it has been announced.

25 Years Ago

Week of Aug. 20-26, 1992

After taking a few seconds to get over the shock, Holton eighth-grade teacher Jackie McAsey accepted the Holton Optimist Club's annual Teacher of the Year Award for 1991-92 on Monday, Aug. 17.

New faculty and staff members in the Jackson Heights school district include Roger Brown, Susan Pfrang, Betsy Montgomery, Carrin McDowell and Kevin Harry.

Groundbreaking festivities were held on Sunday, Aug. 23, for the new Royal Valley High School gymnasium.

David Kuglin, Kenneth Farmer and Paul Krogman have retired from their work at the Holton Post Office. The three have a total of nearly 100 years' service with the USPS.

Judy Ireland has been named Holton High School's new varsity volleyball coach.

50 Years Ago

Week of Aug. 20-26, 1967

Harold Bohannon of Holton was recognized recently by the Mobil Oil Company for 11 years of service as a Mobil dealer in Holton, it was reported.

Julius Goltz announced last week that he has purchased the DX Service Station at Fifth Street and Ohio Avenue in Holton from John and Marie Winters.

Sarah Shaw, daughter of Mr. and Mrs. Howard Shaw of Holton, was crowned Northeast Kansas Dairy Princess at the Atchison County Fair in Effingham last Wednesday evening and will represent this district in the state contest at the Kansas State Fair in Hutchinson this fall. Shaw is a 1967 graduate of Holton High School.

SEPTEMBER SUBSCRIPTIONS ARE NOW PAYABLE



"I have to do this twice a day," said Harold Flickinger of polishing his 2016 Chevrolet Corvette LT3, which he brought to the recent Cruise Night on Holton's Town Square. The car's color, Flickinger said, is "triple black — that's kind of a holy grail with Corvette owners." He also said he's wanted a Corvette since the 1960s and is proud that even though he had to wait until retirement to get one, he finally got one. Several 'Vettes, including Flickinger's, were grouped together on the east side of the Jackson County Courthouse. Photo by Brian Sanders

Family Life

Shingles: a real pain

By Nancy Nelson
Meadowlark Extension
District Agent
Family Life

Shingles causes a painful, blistering skin rash. Your risk of shingles increases as you get older. If you are 60 years of age or older, the Centers for Disease Control and Prevention recommends you get the shingles vaccine.



Shingles, also known as herpes zoster, causes a painful, blistering skin rash that can last two to four weeks. For some people, the pain can last for months or even years after the rash goes away. This pain is called post herpetic neuralgia. It is the most common complication of shingles. The risk of shingles increases as you get older.

People have described pain from shingles as excruciating, aching, burning, stabbing and shock-like. It has been compared to the pain of childbirth or kidney stones.

This pain may also lead to depression, anxiety, difficulty concentrating, loss of appetite and weight loss. Shingles can interfere with activities of daily living like dressing, bathing, eating, cooking, shopping and travel. Shingles can lead to eye complications that can result in vision loss.

Adults age 60 or older are

more likely to get shingles, experience severe pain from the disease and have post herpetic neuralgia.

Shingles is caused by the varicella zoster virus (VZV), the same virus that causes chicken pox. After a person recovers from chicken pox, the virus stays dormant (inactive) in the body. For reasons that are not fully known, the virus can reactivate years later and cause shingles.

Almost one out of three people in America will develop shingles during their lifetime. Nearly 1 million Americans experience the condition each year. As you get older, you are more likely to get the disease.

Shingles cannot be passed from one person to another. However, a person with shingles can transmit VZV to others. A person who gets infected with VZV for the first time will develop chicken pox, not shingles.

Vaccination is the only way to reduce your risk of shingles. CDC recommends adults age 60 years or older receive a single dose of shingles vaccine. It is available by prescription from a healthcare professional. Talk with your doctor or pharmacist if you have questions about the shingles vaccine.

People who have a weakened immune system may have to wait to get vaccinated, or should not get vaccinated at all.

CDC does not have a recommendation for routine use of shingles vaccine in people 50 through 59 years old. However, the vaccine is approved by FDA for people 50 and older.

County arrests...

Continued from Page 2

■ On Aug. 14, Kevin Wichman, 54, Circleville, was arrested on a charge of driving under the influence.

■ On Aug. 14, Sherri Simmons, 46, Topeka, was arrested on a criminal warrant on a charge of failure to appear.

■ On Aug. 14, Jessica Scott, 28, Topeka, was arrested on a criminal warrant on a charge of failure to appear.

■ On Aug. 14, Keith Sconiners, 34, Topeka, was arrested on charges of driving while suspended and operating a vehicle without liability insurance.

■ On Aug. 14, Colleen Knoxsah, 38, Topeka, was arrested on a criminal warrant on a charge of failure to appear and on another criminal warrant on a charge of aggravated failure to appear.

■ On Aug. 14, Robert Kirk, 54, Topeka, was arrested on a criminal warrant on a charge of failure to appear.

■ On Aug. 14, Trevon Hale, 25, Lawrence, was arrested on a criminal warrant on a charge of failure to appear.

■ On Aug. 16, Brandon Booher, 35, Topeka, was arrested on a charge of driving while suspended.

HHS RESERVED SEATS AVAILABLE



Holton High School still has reserved stadium seats available for purchase for the entire 2017-18 football season. Reserved seats are good for all football games including the playoffs. Cost is \$50 per seat. All proceeds go to the stadium expansion/improvement project.

If you have any questions, please contact Holton High School Athletic Department, Karen Beightel @ 785-364-2181 or at kbeightel@holtonks.net
There are plenty of prime seating options open!
Price does not include admission to the game.

Host an Exchange Student Today!

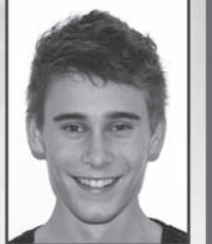
(for 3, 5 or 10 months)



Victoria from Australia, 17 yrs. Enjoys spending time with her family and younger siblings. Victoria plays volleyball and is excited to learn new sports while in America.

Make a lifelong friend from abroad.

Enrich your family with another culture. Now you can host a high school exchange student (girl or boy) from France, Germany, Scandinavia, Spain, Australia, Japan, Brazil, Italy or other countries. Single parents, as well as couples with or without children, may host. Contact us ASAP for more information or to select your student.



Giorgio from Italy, 16 yrs. Loves to play baseball and spend time with his dogs. Giorgio also plays the guitar, and his dream is to join a drama club at his American high school.

Stephanie at 316-734-5048
Amy at 1-800-736-1760 (Toll Free) host.asse.com or email info@asse.com



Founded in 1976
ASSE International Student Exchange Program is a Public Benefit, Non-Profit Organization.
For privacy reasons, photos above are not photos of actual students

Public Notice

(First published in The Holton Recorder, Holton, Kan., on Monday, Aug. 7, 2017.)

IN THE DISTRICT COURT OF JACKSON COUNTY PROBATE DIVISION

In the Matter of the Estate of Scott D. Ellis

Case No. 2017-PR-25

NOTICE OF HEARING

THE STATE OF KANSAS TO ALL PERSONS CONCERNED:

You are notified that a Petition has been filed in this Court by Todd M. Ellis, sole heir of Scott Darren Ellis, deceased, requesting that Descent be determined for the following described real estate in Jackson County, Kansas:

to the Townsite of St. Marys, Pottawatomie County, KS

together with all personal property and other Kansas real estate owned by the decedent at the time of death, and that all such real estate and personal property be assigned pursuant to the rules of intestate distribution.

You are required to file your written defenses to the Petition on or before August 29, 2017, at 8:30 a.m., in this Court, in the city of Holton, Jackson County, Kansas, at which time and place the cause will be heard. Should you fail to file your written defenses, judgment and decree will be entered in due course upon the Petition.

Todd M. Ellis, Petitioner

Robert S. Redler #20270 Attorney for Petitioner Law Offices of Robert S. Redler PO Box 26, 511 W. Bertrand St. Marys, KS 66536 Tel: 785-437-3250 Fax: 785-437-3518

A one-half undivided interest, as tenant in common, with Todd M. Ellis, of the real estate described as: Lots 15 and 16, in Block 51, in the first Addition to the City of St. Marys, Pottawatomie County, Kansas, also described as Lots 15 and 16, in Block 51, in the first Addition

ML62t3

WILTON CHARACTER CAKE PANS
Everything from tractors & trains to dinosaurs

Let Us Surprise You!
CANDY MELTS • CANDY MOLDS
All Your Cake Decorating Supplies In One Spot!

SPICES EMBROIDERY GOODS
Check Our Button Rack!!

We might not have everything, but we have a little of a lot!!

ROGER VARIETY
415 New York, Holton, Kan. 364-3321

Regular Hours: Mon.-Fri.: 9 am-6 pm
CLOSING TUES. @ 5:30 pm
Sat.: 9 am-5 pm
CLOSED SUNDAYS.

Pride of Hoyt Concert featuring:

DEPARTURE

Saturday, August 26
Gates Open: 8:30 p.m. • Starts at 9 p.m.
Hoyt City Park • \$5 per person

10th Annual

ONAGA TRACTOR DRIVE

ONAGA, KANSAS • FAIRGROUNDS
Sunday, August 27
1 p.m. (Sign up: Noon to 12:30 p.m.)

\$30 registration fee Meal from 11:30 a.m.-1 p.m.

For information, call Gilbert at 785-293-2228
Sponsored by Onaga FFA Alumni Assoc.



The premium on Devin Bloom's grand champion steer, shown above, was purchased by Holton Livestock Exchange, Paola Livestock Auction, Tri-County Livestock, Ireland Custom Exhaust, Wetmore Vet Clinic, DR Livestock, Bloom Farms and Burdick Seed.



The premium on Cailin Parks' reserve grand champion steer, shown above, was purchased by Denison State Bank and Mike and Sheila Day, Mike Day is shown in the photo.



The premium on Jerilyn Nelson's reserve champion meat goat entry, shown above, was purchased by a group of buyers represented here by Denny Rezac of Rezac Livestock Commission.

4-H premium livestock sale hits \$80,470.50

Total premiums (gifts from local businesses, professional people and other 4-H supporters) awarded at the 2017 Jackson County 4-H Premium Livestock Sale held on Thursday, Aug. 3 were \$80,470.50.

The breakdown of premiums were as follows — \$27,540.50 for 53 swine projects for a \$519.63 average premium, \$33,125 for 50 beef projects for a \$662.50 average premium, \$10,255 for 21 sheep projects for a \$488.33 average premium and \$9,550 for 20 meat goat projects for a \$477.50 average premium.

The total premiums awarded at last year's livestock sale were \$77,725.

The results from the 2017 premium livestock sale were as follows:

SWINE COMPLETED SALE BILL

Jessica Marney, \$275, Farm Bureau Financial Services, and Bailey Trucking and Kelly and Kim Kennedy (add-on buyers, \$75 total); Brandon Kelly, \$425, Rinkes Cattle Co., Denison State Bank, Excel Concrete, Hiawatha Implement, Colter Cattle Co. and Tarwater Farm and Home; Kailei Mitchell, \$400, Banner Creek LLC and Justin Mitchell; Austin Porubsky, \$375, Petro Deli, Excel Concrete, Shawnee County Farm Bureau, Tarwater Farm and Home and Colter Cattle Co.; Kaden Cattrell, \$400, Schreiber Red Angus;

James Beauchamp, \$300, The Farmers State Bank, and Kelly and Kim Kennedy and Bailey Trucking, add-on buyers, \$50 total; Kolby Rethman, \$725, The Farmers State Bank and Kellerman Real Estate and Insurance; Brianna Cattrell, \$450, Tessoroff Fencing, and Ryan Wilson (add-on buyer, \$115); Shelby Phillips, \$825, Matt and Rachel Bloom and Denison State Bank; Timmy Smith, \$400, Brahma Equipment Leasing and Brahma Excavation;

Sidney Bohnenkemper, \$425, Hoyt Pallet; Jake Kelly, \$575, Farview Farms Meat Co., Excel Concrete, Porubsky Farms, Tarwater Farm and Home and Colter Cattle Co.; Cassandra Fund, \$350.47, Degand Drywall; Isaac Utz, \$700, Jeff and Nancy Kathrens and Steve and Diane Kathrens Farms Inc.; Olivia Rickel, \$625, Tarwater Farm and Home, Petro Deli and Excel Concrete;

Presley Phillips, \$750, Lifetime Eye Care; Savannah Cattrell, \$450, Anweiler Real Estate and Manhattan Commission Company; William Beauchamp, \$375, Jackson Farmers Inc., and Banner Creek Animal Hospital (add-on buyer, \$25); Christine Smith, \$275, Jackson Farmers Inc., and Bailey Trucking (add-on buyer, \$50); Parker Zeller, \$350, Jackson County Livestock Association and The Farmers State Bank;

Cheyenne Hittle, \$375, Denison Financial Services; Mary Leigh Myers, \$350, JB Pearl Sales and Service and Rezac Livestock Commission; Kolden Ingels, \$475, Stabel Land and Cattle, Patterson Farms and CP Cattle; Karlie Albright, \$650, Larry Larkin; Nathaniel Fund, \$325, Stauffer Salvage and Ag Repair;

Karoline Tannahill, \$400, Custom Sheetmetal; Paden Askren, \$1,200, Randy and Donna Pool, Lazy Rockin A, Holton National Bank, The Farmers State Bank and Wetmore Vet; Peyton Thomes,

\$300, Degand Drywall, and Kelly and Kim Kennedy (add-on buyers, \$25); Aidan Colter, \$750, Excel Concrete, Porubsky Farms, Arbor Sod and Seeding, Petro Deli, Farview Farms Meat Co. and Tarwater Farm and Home; Sarah Grafton, \$325, Anweiler Real Estate;

Trevor Bowser, \$275.03, Country Wide Construction, and Charles and Laura Call (add-on buyers, \$25); Madilyn Bacon, \$400, Foster Ford and Ron Kirk's Body Shop; Casey Conley, \$275, Degand Drywall, and Charles and Laura Call (add-on buyers, \$25); Blaine Lutz, \$300, Gene Bergsten; Tyler Nioce, \$250, Holton National Bank, and Charles and Laura Call and Bailey Trucking (add-on buyers, \$50 total); Abigail Robinson, \$400, Denison State Bank and Tarwater Farm and Home; Jordan Cox, \$225, Jackson Farmers Inc., and Kelly and Kim Kennedy and Bailey Trucking (add-on buyers, \$100 total); Samantha Beauchamp, \$325, Heartland Veterinary Health Center; Breanna Brees, \$400, JB Pearl Sales and Service, Rezac Livestock Commission, St. Marys Vet Clinic and Nemaha County Co-op; Kyle Bohnenkemper, \$300, Leonard Myers;

Wyatt Bacon, \$325, Rob Ladner; Devin Bloom, \$500, Denison State Bank; Emily Albright, \$700, Larry Larkin; Gabriel Fund, \$275, Kester Animal Clinic, and Kelly and Kim Kennedy (add-on buyers, \$25); Alyssa Gooderl, \$875, Denison State Bank, Tarwater Farm and Home and Ehrhart Excavation, and Banner Creek Animal Hospital (add-on buyer, \$25); Preston Utz, \$975, Hiawatha Implement, Ireland Custom Exhaust, Jackson County Farm Bureau Association, Jackson County Livestock Association, The Farmers State Bank, T Bar T Angus and Genex and Jackson Farmers Inc., and Banner Creek Animal Hospital (add-on buyer, \$25); Savannah Phillips, \$650, Carl Reiff; Monte Mitchell, \$400, Gene Clark and Doug Richert Chevrolet-Buick; Dakota Hittle, \$500, Excel Concrete and Denison State Bank; Tyson Parks, \$550, Jeff and Nancy Kathrens and Steve and Diane Kathrens Farms Inc., and Premier Farm and Home (add-on buyer, \$50); Cassidy Parks, \$575, Petro Deli, Excel Concrete, Tarwater Farm and Home and Performance Tire and Auto, and Premier Farm and Home (add-on buyer, \$50); Landan Porubsky (reserve grand champion), \$650, JB Pearl Sales and Service; and Cailin Parks (grand champion), \$2,100, B & P Propane/Knotty Pine Oil.

BEEF COMPLETED SALE BILL
Ben Kneisler, \$350, Capital Federal Foundation and Homestead Affordable Housing, and Schreiber Red Angus and Bailey Trucking (add-on buyers, \$150 total); Quinn Allen, \$475, Horton National Bank, and Charles and Laura Call (add-on buyers, \$25); Emberlee Allen, \$475, Holton Family Health Center, and Charles and Laura Call (add-on buyers, \$25); Abigail Robinson, \$600, Frontier Concrete Construction; Colby Doyle, \$575, Foster Ford, Holton National Bank and Ron Kirk's Body Shop, and Lee Doyle Seeds (add-on buyer, \$200); Bailey Kathrens, \$650, Arbor Sod and Seeding and Denison State Bank; Rhett Kennedy, \$500, The Farmers State Bank; Austin Porubsky, \$475, J J K Farms and Northwood Farms Inc., and Charles and Laura Call (add-on buyers, \$25); Jace Doyle, \$775, Banner Creek Animal Hospital; Brodey Nicol, \$525, The Farmers State Bank;

Casey Conley, \$600, Rezac Livestock Commission, St. Marys Vet Clinic and Nemaha County Co-op; Bronc Reser, \$575, Capital Federal Foundation and Homestead Affordable Housing; Joel Kennedy, \$625, Banner Creek Animal Hospital; Amariah Allen, \$575, B & P Propane/Knotty Pine Oil and Homestead Affordable Housing (plus \$100 add-on); Madiline Kennedy, \$650, Chris Gross Construction; Dali Reser, \$500, Rezac Livestock Commission and St. Marys Vet Clinic; Alyssa Gooderl, \$850, DJ Chance; Kyler Tannahill, \$550, Bloom Farms; Samantha Beauchamp, \$525, Heartland Veterinary Health Center; Olivia Rickel, \$700, Manhattan Commission Company, Hiawatha Implement, Rinkes Cattle Co., Petro Deli, Tarwater Farm and Home, Performance Tire and Auto and Denison State Bank;

Miles McCauley, \$650, Kellerman Real Estate and Insurance, and Banner Creek Animal Hospital (add-on buyer, \$25); Savannah Phillips, \$600, Carl Reiff; Parker Zeller, \$600, Rezac Livestock Commission and Horton National Bank; Savannah Cattrell, \$575, T Bar T Angus and Genex, Jackson Farmers Inc. and The Farmers State Bank; Cauy Phillips, \$650, Ehrhart Excavation;

Kaden Cattrell, \$600, T Bar T Angus and Genex and The Farmers State Bank; Shelby Phillips, \$625, Holton Livestock Exchange; Kolby Rethman, \$650, Horton National Bank; Presley Phillips, \$675, Central National Bank, Accel Construction and Homestead Affordable Housing; Cole Kucan, \$825, Lifetime Eye Care;

Paden Askren, \$675, Union State Bank of Everest/Horton, The Farmers State Bank and Holton National Bank; Emily Albright, \$825, Tarwater Farm and Home, Farview Farms Meat Co., Heartland Cattle, Hiawatha Implement, Rinkes Cattle Co. and Denison State Bank, and Premier Farm and Home (add-on buyer, \$50); Christan Kucan, \$600, Kellerman Real Estate and Insurance and Jackson Farmers Inc.; Olivia Yingst, \$700, Schlaegel Popcorn and Income Tax; Macey Gross, \$700, Hiawatha Implement, Arbor Sod and Seeding and Denison State Bank;

Konnor Tannahill, \$475, Manhattan Commission Company, and Kelly and Kim Kennedy (add-on buyers, \$50); Jenna McAllister, \$1,050, The Pines at Holton, Wetmore Vet, Jackson Farmers Inc., Ireland Custom Exhaust, Barnett Angus and Jackson County Farm Bureau Association; Haden Doyle, \$800, Rinkes Custom Harvest, B & P Propane/Knotty Pine Oil, Holton National Bank, Foster Ford, Lee Doyle Seeds, Boomers' Steakhouse and Catering and Ron Kirk's Body Shop; Kyler Kathrens, \$675, B & P Propane/Knotty Pine Oil; Jack Wiedmann, \$475, The Holton Recorder and Denison State Bank, and Kelly and Kim Kennedy (add-on buyers, \$25);

MaKenzie Kennedy, \$475, Horton National Bank, and Kelly and Kim Kennedy (add-on buyers, \$25); Reece Burns, \$600, Barnett Angus, Olson Oil Co. and Jackson County Farm Bureau Association; Danni Klahr, \$575, Carl Reiff; Karlie Albright, \$850, Bloom Farms, JB Pearl Sales and Service, Rezac Livestock Commission, Performance Tire and Auto and Denison State Bank; Garrett Pruyser, \$600, Marty Albright;

Bridget Kucan, \$500, Heartland Veterinary Health Center; Jared Ebert, \$500, Manhattan Commission Company; Katelyn Meggison, \$500, Jackson County Livestock Association and The Farmers State Bank; Cailin Parks (reserve grand champion), \$900, Mike and Sheila Day and Denison State Bank; and Devin Bloom (grand champion), \$1,950, Paola Livestock Auction, Tri-County Livestock, Ireland Custom Exhaust, Holton Livestock Exchange, Wetmore Vet, DR Livestock, Bloom Farms and Burdick Seed.

SHEEP COMPLETED SALE BILL
Lane Pruett, \$300, Wege's Feed Service ADM Alliance Nutrition; Jerilyn Nelson, \$350, Nelson Ranch; Madilyn Bacon, \$300, Jackson County Farm Bureau Association; Sean Morrissey, \$275, Dairy Queen; Zane Montgomery, \$375, Jayhawk TV and Appliance; Cash Robinson, \$1,000, Stewart Trucking, Bloom Feeders, Tri-County Livestock (plus \$200 add-on), Clay Center Livestock and Ireland Custom Exhaust; Joshua Clark, \$225, Farm Bureau Financial Services, and Bailey Trucking and Kelly and Kim Kennedy (add-on buyers, \$75 total); Wyatt Bacon, \$300, The Farmers State Bank; Piercion Cyphers, \$500, Eubanks Custom Woodworks; Sydney Raborn, \$250, Carl Reiff, and Charles and Laura Call (add-on buyers, \$25); Alexandria Kester, \$300, Kellerman Real Estate and Insurance, and Premier Farm and Home (add-on buyer, \$50); Ean Winsor, \$425, Jackson Farmers Inc. and Holton Livestock Exchange; Joel Nelson, \$475, Nelson Ranch, and Ryan Wilson (add-on buyer, \$100); Blade Montgomery, \$300, The Farmers State Bank; Alexandra Clark, \$400, Mickie Schultz, and Ryan Wilson (add-on buyer, \$130);

Sadie Raborn, \$250, The Farmers State Bank and Jackson Farmers Inc., and Charles and Laura Call (add-on buyers, \$25); Southern Raborn, \$225, Kevin Stauffer, and Bailey Trucking (add-on buyer, \$50); Charlotte Cyphers, \$475, Lee Doyle Seeds, Boomers' Steakhouse and Catering and Ron Kirk's Body Shop; Madeline Montgomery, \$200, Matt and Rachel Bloom, and Bailey Trucking and Kelly and Kim Kennedy (add-on buyers, \$75 total);

Sophia Mellenbruch (reserve grand champion), \$1,200, Flatt and Strobel Cook, Denison State Bank, Holton Meat Processing and Petro Deli; and Judd Nelson (grand champion), \$1,400, Harshaw Tax Service, JB Pearl Sales and Service, Rocking M Trailers, Nechita Construction, Black Gold Insulation, Holton National Bank, Holton Family Dentistry and Resource Real Estate.

MEAT GOAT COMPLETED SALE BILL
Shayla Rezac, \$375, Rezac Livestock Commission, Northwood Farms,

Inc. and J J K Farms, and Clemons Insurance (add-on buyer, \$50); Judd Nelson, \$450, Lifetime Eye Care; Dakota Abel, \$400, H&R Block; Koy Tannahill, \$375, Cathleen Reed; Ean Winsor, \$475, Jackson County Livestock Association and Barnett Angus; Blaine Lutz, \$275, Horton National Bank, and Kelly and Kim Kennedy (add-on buyers, \$25); Ty Stephens, \$275, Horton National Bank; Phoenix Cannon, \$250, David Schock, and Bailey Trucking (add-on buyer, \$25); Megan Swanson, \$250, P&J Quick Mart, and Kelly and Kim Kennedy (add-on buyers, \$25); Marcus Pruett, \$250, Denison State Bank, and Kelly and Kim Kennedy (add-on buyers, \$25);

Karoline Tannahill, \$450, Joe and Kathy Kennedy; Jarrett Abel, \$350, Jackson County Farm Bureau Association and Holton National Bank; Alexandra Cannon, \$225, Bailey Trucking (plus \$50 add-on); Faith Bloom, \$550, Holton Livestock Exchange, Wetmore Vet, Burdick Seed, Bloom Farms and Holton National Bank; Kyler Tannahill, \$400, Aaron and Cody Utz; Cash Robinson, \$1,050, Kingsville Livestock and 3 State Stock Yards; Isabelle Stephens, \$250, Horton National Bank, and Charles and Laura Call (add-on buyers, \$25); Lily Cannon, \$275, 3L Boer goats;

Jerilyn Nelson (reserve grand champion), \$1,000, Rezac Livestock Commission, Rocking M Trailers, Harshaw Tax Service, Holton Family Dentistry, Black Gold Insulation, Nechita Construction, Nelson Ranch and Resource Real Estate; and Joel Nelson (grand champion), \$1,400, Rocking M Trailers, Harshaw Tax Service, Nechita Construction, Holton National Bank, Black Gold Insulation, Holton Family Dentistry and Resource Real Estate.

SUPPORT THE BUSINESSES THAT SUPPORT LOCAL 4-H!

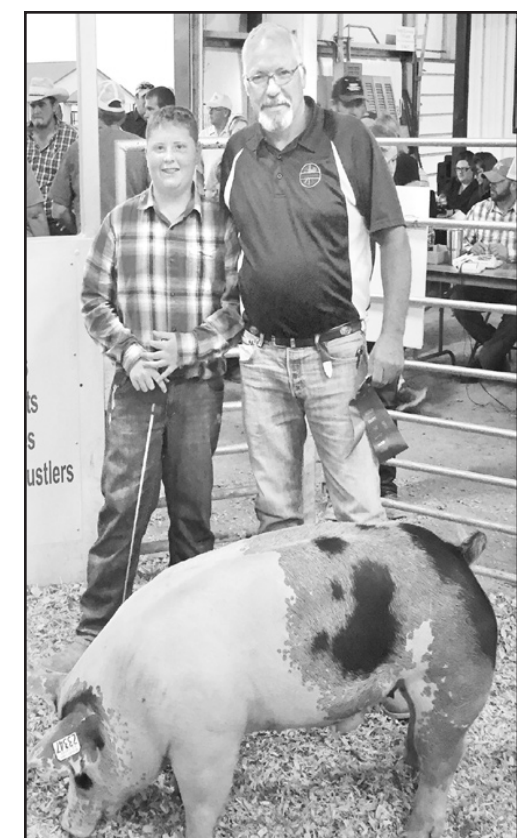
The premium on Joel Nelson's grand champion meat goat entry, shown above, was purchased by a group of buyers represented here by Holton National Bank's Ed Dewey.

The premium on Landan Porubsky's reserve grand champion swine entry, shown above, was purchased by JB Pearl Sales and Service, represented here by Don Pearl.

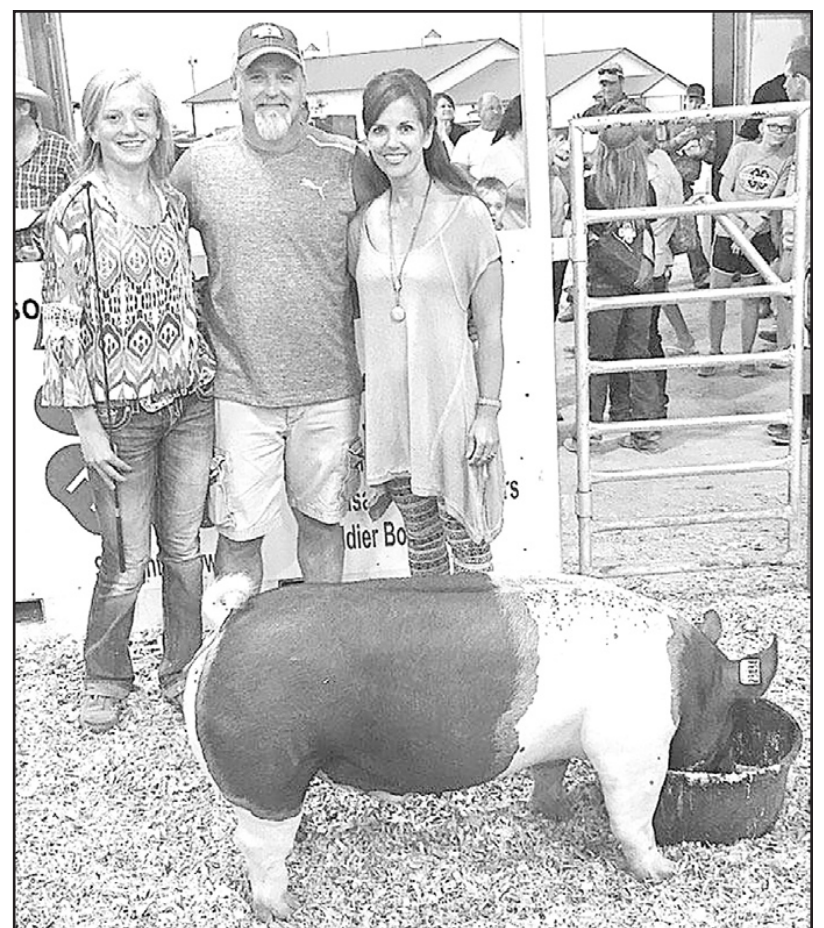
The premium on Cailin Parks' grand champion swine entry at the fair, shown above, was purchased by Brett and Carly Fletcher of B&P Propane/Knotty Pine Oil.



The premium on Joel Nelson's grand champion meat goat entry, shown above, was purchased by a group of buyers represented here by Holton National Bank's Ed Dewey.



The premium on Landan Porubsky's reserve grand champion swine entry, shown above, was purchased by JB Pearl Sales and Service, represented here by Don Pearl.



The premium on Cailin Parks' grand champion swine entry at the fair, shown above, was purchased by Brett and Carly Fletcher of B&P Propane/Knotty Pine Oil.

Photos by David Powls

OBITUARIES **Pride of Hoyt...**

Hurst

Irene June Hurst, 94, Valley Falls, died Thursday, Aug. 17, 2017, at Atria Hearsthouse East, Topeka.

She was born June 26, 1923, at Russell, the daughter of John Walter Herdt Sr. and Katherine Dumler Herdt. She graduated from Valley Falls High School in 1941 and had lived in Russell, WaKeeney and Clyde before moving to Valley Falls. She had lived in Hillsboro for a short time before returning to Valley Falls after her marriage.

Mrs. Hurst and her husband farmed and operated Hurst Auction Service. They also worked at the Holton Livestock Exchange, where she worked part-time in the sale barn office.

She was confirmed in St. Paul's Lutheran Church and was active at Valley Falls United Methodist Church, where she taught Sunday school, served as United Methodist Women president and served on various committees. She also was a member of Meriden Chapter 399 of the Order of the Eastern Star, Federated Study Clubs and Chapter DK, PEO, as past president, and she served as city and county chairwoman for the March of Dimes.

She married Paul Arthur Hurst on May 3, 1942, in Hillsboro. He died June 13, 1992. She was also preceded in death by a son, Lt. Quentin Fox Hurst, on Sept. 27, 1968 in Vietnam; her parents; her stepmother, Tabea Steinert Herdt; and six brothers, LeRoy, John, Ralph, Marvin, Leonard and George.

Survivors include her children, Jeffrey Mark Hurst and Loretta Renee Hurst, both of Topeka; grandchildren, Quentin Ashley and M. Ilene Hurst, Overland Park, and Jay Robert and Cortni Jean Hurst, Topeka; great-grandchildren, Garrhett Paul, Cecily Faith, J.D. "Jack" and Corey Matthew Hurst, all of Overland Park; and three siblings, Helen Leona Jordan, Kansas City, Mo., Robert Eugene Herdt, Overland Park, and Ruth Elaine Penner, Newton.

Funeral services were held Monday afternoon at Valley Falls United Methodist Church. Interment followed in Valley Falls Cemetery.

Memorial contributions may be made to the Valley Falls United Methodist Church Organ Fund, 410 Frazier Ave., Valley Falls, KS 66088; or the Valley Falls Historical Society, 310 Broadway, Valley Falls, KS 66088.

Holton Recorder 8/21/17

Llamas

Nancy Bea "Nezat" Wishkeno Llamas, 64, Topeka, died Thursday, Aug. 17, 2017, at Rossville Nursing Home.

She was born June 2, 1953, in Holton, the daughter of Wesley and Nettie Keesis Wishkeno. She graduated from Rossville High School and attended Haskell Indian Junior College.

Mrs. Llamas retired from the State of Kansas. She had lived most of her life in the Topeka community.

She was a member of the Prairie Band Potawatomi Nation and had volunteered at Topeka Shawnee County Public Library.

She married Henry Llamas. He died in December of 1992.

Survivors include a brother, Lance Wishkeno and wife Lucy, Rossville; four sisters, Camilla Chouteau and Audrey Simon, both of Topeka, Gloria Keesis, Moore, Okla., and Bernadine Wishkeno, Albuquerque, N.M.; a son, Wesley Llamas, McKinney, Texas; and seven grandchildren.

Graveside services were held Monday morning in Wishkeno Cemetery. Mercer Funeral Home in Holton is in charge of arrangements.

Holton Recorder 8/21/17

OBITUARIES **Pride of Hoyt...**

Continued from Page 1

cancel," Bailey said. "But they got hold of Departure and pretty much booked them for us."

The band will play from 9 p.m. to midnight, and admission is \$5.

New events for Saturday include a "corn-hole" tournament, involving the popular lawn game in which players take turns throwing bean bags at a target hole, starting at 8 a.m.; call Jason or Amy Klotz at (785) 986-6660 to register.

There's also a "Warrior Dash" for all ages, with older kids participating at 8:30 a.m. and younger kids at 9:30 a.m., and a video gaming trailer and a laser tag game available throughout the day.

"I think kids are going to have a lot of fun with the gaming trailer and the laser tag," Bailey said.

From 7 a.m. to 4 p.m., there will be a model railroad display provided by area model train enthusiasts Carl Halgren, David VanMeter and Stan Deer.

There will also be a children's bicycle decorating contest for kids ages 5-12 at 1 p.m. in the Royal Valley High School parking lot, prior to the parade. Young bicyclists are encouraged to ride in the parade at the end of the contest.

Also, "yard games" will be open to kids of all ages from 9 a.m. to 4 p.m. at the park, including "life-size" checkers, Yahtzee and Jenga games, washers, ring toss and ladder toss games, among others.

But that doesn't mean that some of the festival's favorite events are being sacrificed to make way for new entertainment, Bailey said.

"All the old stuff is going on," she said. "We're still doing the breakfast, the silent auction, the quilt display and the art show. We're still doing food vendors, crafts, the mud volleyball tournament and the horse-drawn wagon rides."

And the classic car, motorcycle and tractor show will again be a part of Pride of Hoyt Days, starting at 9 a.m.

"Nobody's really in charge of that, so if you want to bring your

car, your motorcycle or your old farm tractor, just show up," Bailey said.

Saturday's events begin with a breakfast from 7 a.m. to 10:30 a.m. in the community building, where Bailey said members of Hoyt United Methodist Church will provide a morning meal for a free-will donation. Several items donated by merchants in Hoyt, Mayetta and Holton will be on display for a silent auction that will go until 5 p.m., she said.

The festival's craft show will be held from 8 a.m. to 5 p.m. in the 4-H building, it was reported, and any interested area arts and crafts vendors are encouraged to contact Bailey for more information on setting up a booth.

One of the annual event's most popular sports activities will begin at 8 a.m., Bailey said. The festival's mud volleyball tournament will begin at that time, and teams are asked to register as soon as possible by calling Sarah Williams at (785) 250-1230.

Another popular part of Pride of Hoyt Days is the horseshoe tournament, which begins at 10 a.m. Participants are asked to call Mike McClaskey at (785) 986-6341 to register for the tournament.

A garden tractor pull will once again be held as part of the Pride of Hoyt festival, with weigh-in to begin at 11 a.m. and pulls to begin at noon. For more information or to sign up for the pulls, call Keith Hug at (785) 966-2468.

Funds raised during the day's activities benefit the Pride of Hoyt Days Committee, which Bailey said remains involved with park and community improvement projects. Over the years, she said, the committee has been involved with building new restrooms, installing a gazebo and a flower garden and upgrading electrical services in the park.

Saturday's events are as follows:

- 7 a.m.-10:30 a.m., breakfast in the community building.
- 7 a.m.-5 p.m., silent auction, quilt display and art show in the community building.
- 7 a.m.-4 p.m., model rail-

road display, community building.

- 8 a.m.-5 p.m., food, craft and product vendors, 4-H building area.
- 8 a.m.-5 p.m., mud volleyball tournament.
- 8 a.m.-5 p.m., corn hole tournament.
- 8:30 a.m., Warrior Dash for participants in sixth grade and up.
- 9 a.m.-5 p.m., horse-drawn wagon rides.
- 9 a.m.-4 p.m., car, motorcycle and tractor show.
- 9 a.m.-11 a.m., Laser Tag.
- 9 a.m.-4 p.m., yard game area.
- 9:30 a.m., Warrior Dash for participants in pre-school through fifth grade.
- 10 a.m., horseshoe tournament.
- 11 a.m., garden tractor pull weigh-in.
- 11:15 a.m.-1:15 p.m., video game trailer open.
- Noon-7 p.m., garden tractor pull.
- 1 p.m., bicycle decorating contest in the RVHS parking lot.
- 1:30 p.m., parade line-up, RVHS parking lot.
- 2 p.m., parade.
- 2:30 p.m.-4:30 p.m., video game trailer open.
- 3 p.m.-7 p.m., fried chicken dinner in the community building.
- 9 p.m.-midnight, concert/dance with Departure.

The festival will conclude on Sunday with a community church service starting at 10 a.m. in the park's shelter house. Hoyt Methodist Church, Mayetta Methodist Church and Potawatomi Methodist Church will conduct the service, Bailey said.

Personal utility vehicles are not allowed off the park's main road during the event, with exceptions to be made for handicapped persons and event staff. Volunteers are also being sought to help with the day's event.

For more information, or to register as an arts and crafts or food vendor or participate in the parade, call Bailey at (785) 986-6758 or (785) 608-8257.



Frances (left) and Don Tutt

Tutts...

Continued from Page 1

Frances was also a political activist, working on behalf of all animals in the state, the women said.

"Anytime there was a bill that was about to be passed involving animals, she'd tell everyone to call their representative," Dannenberg said.

Frances kept detailed notes about how certain lawmakers voted on animal issues, according to family members.

Although they lived in Topeka in their later years, Frances and Don would still drive up to Holton to attend some of the society's fund-raisers.

"Don loved gooseberry pie so we'd always hold back a piece for him," Flemming said.

Frances also sewed catnip mice up until her death as a fund-raising effort for the shelter.

Final distributions from the Donald E. and Frances B. Tutt Family Trust were gifted in 2016. Besides the two shelters, donations were made through the years to other animal rights groups, including PETA and

ASPCA.

Dannenberg and Flemming said they haven't utilized any of the donated funds yet from the Tutts but have discussed having a mobile sterilization service come to the shelter and offer free neutering and spaying. The funds could also be used for a possible addition to the shelter in the future, they said.

"The donation is a blessing," Flemming said. "We try to use our fund-raisers to keep up our current expenses so we don't have to live off our savings."

The society's next fund-raiser is a taco salad bar set for 11 a.m. to 1 p.m. on Wednesday, Aug. 30. Free will donations will be collected for the meal that will include taco salad, a drink and dessert.

Both Frances and Don graduated from Topeka High School. Throughout his career, Don worked in advertising and then as a map maker for the state of Kansas. Frances worked for the U.S. government.

After living in Jackson County, the Tutts moved to Topeka in 2001.

Circleville Christian

By Jeannie Arnold

Jay and Carol Buehler served as greeters at the door for Cowboy Church at Circleville Christian Church on Sunday, Aug. 13. Brody Bliss gave the welcome and announcements.

Music was provided by the praise team of Dale and Ilah Rose Askren, Max Lierz and Paul and Sue Davault. The prayer for concerns and praises was given by Blair Wagner.

Paul Davault used text from Hebrews 12:5-7 as he gave the communion meditation. Communion servers were Donnie Askren, Mike Cochren, Jeremy Kennedy and John Ray.

The prayer for the offering was given by Dale Askren.

Hanna Davault played her clarinet and Sue Davault played her guitar providing music of "This Is My Story" as communion was served and "Amazing Grace" as the offering was received.

Brody Bliss used text from Genesis 29:14-30 as he gave the morning sermon titled "You Reap What You Sow." His message followed the life of Jacob as he brought out the points of the sermon.

1. Careless views of God result in careless mistakes.
2. When money is involved, treachery lurks.
3. Weeds beget weeds, not

flowers.

4. God distributes judgment when we least expect it.

5. Don't show favoritism; it will cause problems.

He asked the question "What are you sowing? What are you investing in?" Following the sermon, Alex Browning was baptized by his grandpa, Johnny Lynch. Congratulation to Alex on his decision to follow Christ in his life. The service closed by singing "Happy Trails To You."

On Aug. 27, there will be an ice cream social and talent show benefit for the Ben and Diane Owens family in support of Ben's journey with cancer. We will start serving ice cream at 4 p.m. with the talent show beginning at 5:30 p.m.

Obit guidelines

When submitting obituaries to *The Holton Recorder* for publication, please remember that we can print a 2-inch-by-3-inch photo of the deceased for a \$12.50 charge. Pictures of the deceased may be e-mailed to *The Recorder* at holtonrecorder@giantcomm.net or bring the photo to the *Recorder* office at 109 W. Fourth St. in Holton to be scanned in a timely manner. When e-mailing photos, please make sure the resolution is at least 640 pixels by 480 pixels.

AREA CHURCH DIRECTORY

Please report any changes in service or personnel to the Recorder at 364-3141. Thank You.

| | | |
|--|---|--|
| <p>Bethany Baptist Church 821 New York • 364-4533 Pastor Ron Sellens Youth Minister David Noland Sunday: 9:30 a.m. Sunday school 10:15 a.m. Worship service 1 p.m. Sunday afternoon service Wednesday: 7:15 p.m. Prayer meeting</p> <p>Bucks Grove UM Church Pastor: Charlotte Milroy • 234-4243 Sunday: 9 a.m. Church service</p> <p>Christ's Church Southern Heights Clubhouse Pastor Jon Hanna Information 364-3468 Sunday: 8:30 a.m. Fellowship 9 a.m. Worship</p> <p>New Life Church of the Nazarene 100 Topeka, Ave., Holton • 364-3642 Rev. Kevin Kneisley Sunday: 9:30 a.m. Sunday school 10:45 a.m. Worship service</p> <p>Circleville Christian Church 7701 254th Rd., Circleville Brody Bliss, Minister Brandon Winters, Associate Minister Sunday School: 9:15 a.m. Sunday Worship: 8 a.m. Traditional Service 9:15 a.m. Cowboy Church 10:45 a.m. Contemporary Worship Website - circlevillechristian.com Email - circlevillechristian@yahoo.com</p> <p>Circleville United Methodist Pastor: Charlotte Milroy • 234-4243 Sunday: 10:30 a.m. Worship service</p> <p>Community of Christ Church 222 New Jersey • Pastor Dean Sharp Sunday 10 a.m. Worship service</p> <p>Delia Presbyterian Church 514 Jackson St. • Rev. Doug Phenix Sunday: 10 a.m. Morning worship Check sign board for other events.</p> <p>Denison Bible Church 300 W. 5th St. • Pastor Tom Fraunfelter Sunday: 10 a.m. Sunday School 11 a.m. Worship 785/935-2464 • 785/422-2953</p> <p>Denison Reformed Presbyterian Rev. J. Edward Hindman • 935-2348 Sunday: 10 a.m. Bible class 11 a.m. Worship service Lunch following the service 1:15 p.m. Afternoon Service</p> <p>Evangel United Methodist Church 227 Pennsylvania Ave. • 364-3834 Sun: 8:50 a.m. Life Journey (contemporary service) 10 a.m. Sunday school 11 a.m. Traditional worship service Church - office@evangelumc.org Pastor - pastor@evangelumc.org</p> <p>First Baptist Church of Holton 404 Juniper, 364-3423 Sr. Pastor: Tim O'Byrne Director of Discipleship - Rhett Totten Sunday: 9:15 a.m. Sunday School 10:30 a.m. Worship Services 5:15 & 6 p.m. Youth Groups Wed: 10 a.m. Bible Study • 6:30 p.m. Choir Friday: 7 a.m. Women's Breakfast 6:45 a.m. Men's Breakfast</p> <p>First Baptist Church of Hoyt Pastor David Burnworth • 986-6446 Wednesday night prayer: 7 p.m. Sunday: 9 a.m. Sunday school 10 a.m. Worship service 7 p.m. Sunday evening worship</p> | <p>First Christian Church 5th and Wisconsin • 364-2545 Dr. Jim McCollough, Pastor Sunday: 9:45 a.m. Sunday School 10:45 a.m. Worship</p> <p>First United Methodist Church Pastor Kathy Williams 1401 W. 4th • 364-3275 Sunday Schedule: 9:00 a.m. Sunday School 10:15 a.m. Worship firstumc@giantcomm.net Holton Kingdom Hall of Jehovah's Witnesses 12350 214th Rd., Holton • 364-4279 Sunday Public Talk: 10 a.m. • jw.org</p> <p>Hoyt United Methodist Church Rev. Bev McCurdy • (c) 785-220-0711 Sunday School: 9 a.m. • 10 a.m. Worship www.hoytunitedmethodistchurch.com</p> <p>Immanuel Lutheran Church, Netawaka Pastor Michael Van Velzer 9 a.m. Sunday Worship 10 a.m. Sunday School 10 a.m. Adult Bible Class Lakeview Faith Chapel Pentecostal Church 3.5 miles south of Holton on U.S. 75 Pastor Steve Cappelman • 364-2416 Sunday: 9:30 a.m. Sunday school 10:15 a.m. Worship service</p> <p>Larkinburg Christian Church Rev. Mark Armstrong Sunday: 9:30 a.m. Sunday school 10:30 a.m. Church service</p> <p>Mayetta Christian Church Ernest Coleman - Pastor Sunday: Fellowship & Waffles: 8:15 a.m.-8:45 a.m. Sunday school: 8:45 a.m.-9:30 a.m. Prayer Circle: 9:30 a.m.-9:50 a.m. Worship service - 10 a.m.-11:15 a.m. Wednesday: Bible Study - 6 p.m.-7 p.m.</p> <p>Mayetta United Methodist Rev. Howard Sudduth Sunday: 9 a.m. Morning worship service and Sunday school</p> <p>Netawaka United Methodist Rev. Youngwan Won Sunday: 8:15 a.m. Worship</p> <p>Onaga New Hope Lutheran Church, ELCA Rev. Charlene Banas, Pastor Sunday: 9 a.m. Worship 10:15 a.m. SS, Adult Bible Class Bible Study: Tuesday @ 7 p.m. Holy Communion 1st & 3rd Sunday</p> <p>Our Lady of the Snows Church Fr. Marianand Mendem 166 and "I" Road, Mayetta, Kan. 597-5656 1st, 3rd, & 4th Sunday Mass 8:30 a.m. 2nd Sunday Mass 1 p.m.</p> <p>Potawatomi Pentecostal Church 4.5 miles west on 134th Rd., Mayetta Rev. Marcia Potts Sunday: 10 a.m. Sunday school 10:45 a.m. Worship service</p> <p>Potawatomi United Methodist Rev. Howard Sudduth Sunday: 9:50 a.m. Sunday school 10:30 a.m. Worship</p> <p>St. Dominic Catholic Church Pastor: Fr. Marianand Mendem 416 Ohio, Holton, 364-3262 Saturday: 5:30 p.m. Mass • Sunday: 10:30 a.m. Mass Confessions 30 minutes before mass. www.jaccatholics.org</p> | <p>St. Francis Xavier Catholic Church Pastor: Fr. Marianand Mendem 3rd & James, Mayetta, 966-2690/364-3262 Sunday Mass: 8 a.m. Confessions 30 minutes before mass. www.jaccatholics.org</p> <p>St. Thomas Episcopal Church 512 Wisconsin, Holton • Rev. Art Rathbun Services on 2nd & 4th Sunday Sunday Services: 10 a.m. 785-224-8798 sthomasholton@holtomail.com</p> <p>Soldier Christian Church 834-5750 • Ron Ahlgren, Minister Luke Schreiber: Youth Minister Sunday: Sunday School: 9:30 a.m. Church Services: 10:30 a.m. Jr. & Sr. High Youth Group: 5 p.m.</p> <p>St. James Catholic Church 306 5th St., Wetmore • Pastor Father Hammes Saturday Mass: 6:30 p.m. Confessions: 30 min. prior to mass</p> <p>Trinity Lutheran Church 401 Cheyenne Pastor Brian Stark 364-2206/364-2029 Sunday School: 9 a.m. • Worship: 10 a.m.</p> <p>Wetmore Bible Church 217 Iowa St., Wetmore Pastor Gary Heitz • 866-2444 Sunday: 10 a.m. Sunday school (for all ages) 11 a.m. Worship Hour 11:30 a.m. Children's Church 7 p.m. Adult Bible Study Tuesday: 1:30 p.m. Women's Bible Study Wednesday: 7 p.m. Youth Group (Jr. High & HS Ages) 8 p.m. Bible Study</p> <p>Wetmore United Methodist Pastor Jessie Zimmerman (785) 866-2512 Parsonage • 866-5556 Church Sunday: 10 a.m. Worship service</p> <p>Whiting Baptist Church Dan Burns, Pastor Sunday: 9 a.m. Sun. school 10 a.m. Worship service</p> <p>Whiting United Methodist Rev. Youngwan Won Sunday: 10 a.m. Education • 11 a.m. Worship</p> <p>New Hope Family Church 515 Iowa, Holton Pastor: Sterling Hudgins Wednesday Meal: 6:30 p.m. Wednesday Service: 7:15 p.m. Sunday Worship: 8:30 a.m.</p> |
|--|---|--|



Public Auction

Sunday, Aug. 27, 2017 • 11 a.m.

Location: Seneca Community Bldg., 1500 Community Dr., Seneca, KS

| | | |
|--|---|--|
| <p>ANTIQUES/COLLECTIBLES Vintage Enterprise Large Sausage Stuffer/Fruit & Lard Press IH McCormick Power Washer Brome Separator; Cream Separator Hair Clippers; Measuring Wheel Hand Held Beater; Measuring Scale Fork & Spoon Set; Dietz Lantern Cold Blast Lantern; Wind Chimes Walnut Cracker; Knife Sharpening Steel Crook Jars, Several Sizes Table, Glass Claw Feet White Metal Baby Bed; Baby Bassinet Drop Leaf Table; Marbles Flour Sacks, Kraut Cutter Brownie Camera & Box Wooden Washboard; Religious Pictures Dresser; Child's Rocking Chair Wooden Sewing Basket Decorative Glassware; Commemorative Plates</p> <p>FURNITURE/APPLIANCES (2) Refrigerators Smooth Top Electric Stove Chromecraft Table & 6 Roller Chairs (2 sets) Table & 4 Barrel Chairs (2) Sofas (2) Rocker Recliners China Cabinet, Curio Cabinet (2) Entertainment Centers Queen Size Bedroom Set/Dresser</p> | <p>Full Size Bedroom Set/Chest Of Drawers End Tables; Table Lamps Chest of Drawers; Microwave Quilt Rack; Plastic Chairs Wooden Shelving</p> <p>TOOLS/GARDENING Tool Chest On Wheels Rubbermaid Shelving Shotgun Shell Reloader Garden Hoses, Ladders Lawn Statues Tomato Cages, Wheel Barrel Sockets, Wrenches Numerous Hand & Gardening Tools Gas Powered String Trimmer Electric Leaf Blower Sachs-Domar Gas Powered Chainsaw</p> <p>HOUSEHOLD ITEMS (3) TVs, RCA Stereo Patio Glider; Patio Table & 2 Chairs (6) Patio Chairs; Metal Bakers Rack Wooden Gun Cabinet Rolltop Desk; Dehumidifier Eden Pure Heater; Card Table & Chairs Small Fireproof Safe Christmas Decorations Little Tykes Table & 4 Chairs Blankets, Sheets, Pillows 18 Qt. Toastmaster Roaster All American Cast iron Pressure Cooker</p> | <p>Blue Granite Roaster Pots, Pans, Tupperware Dishes, Silverware, Cooking Utensils Singer Portable Sewing Machine Various Sewing Accessories Toys/Puzzles/Games</p> <p>COINS Walking Liberty Half Dollar Indian Head Pennies Old Dimes & Nickels Dollar Coins - (1) 1971; (1) 1972; (1) 1974 Quarter - (1) 1947 KS Quarters - 12 quarters Half Dollar Coins - (1) 1936; (4) 1942; (2) 1952; (2) 1954; (1) 1957; (1) 1959; (3) 1962; (1) 1963; (1)??? Nickels - (1) 1947; (1) 1948; (1) 1953 Old Coins - 1892 (1 dime); 1890 (1 penny) 1895 (1 penny); 1906 (2 pennies) 1907 (1 nickel); no date (1 nickel) Pennies - (1) 1910; (2) 1913; (2) 1916; (2) 1917; (4) 1918; (3) 1919; (1) 1921; (1) 1925; (3) 1927; (1) 1928; (2) 1929; (2) 1930; (1) 1934; (3) 1935; (5) 1936; (4) 1937; (2) 1938; (4) 1939; (2) 1942; (2) 1943; (3) 1944; (5) 1945; (3) 1946; (6) 1947; (3) 1948; (5) 1949; (2) 1950; (2) 1951; (3) 1952; (13) 1953; (3) 1954; (7) 1955; (12) 1956; (11) 1957; (3) 1958</p> |
|--|---|--|

DARLENE & THE LATE URBAN HAUG, sellers

DAN DETERS AUCTION COMPANY

AUCTIONEERS: Dan Deters 785-336-1622 / Dale Wilhelm 785-294-8569

Lunch By: The Corning Ball Park Improvement Association • Terms: Cash • Bid By Number, Not Responsible for Accidents.

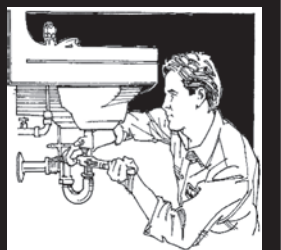
Bell Plumbing Inc.

Plumbing & Water Conditioning

417 E. 5th, Holton • (785) 364-4434

- Residential
- Commercial
- Fixture Sales
- Service

Free Estimates!



SPORTS *Monday*



Holton High School girl golfers (from left to right in the photo above) Sarah Holaday, Abigail Hundley and Faith Holaday practices putting on Thursday at the Holton Country Club. Photo by Brian Sanders

Four letterwinners return to Holton High girls golf team

By Brian Sanders
Two Holton High School girls who earned a trip to last year's state girls golf tournament as sophomores will be looking to repeat this year as part of a team, HHS Girls Golf Coach Dennis Tegethoff said. Juniors — and cousins — Sarah and Faith Holaday are two of four returning letterladies on the seven-member team, along with juniors Taylor Stevens and Abigail Hundley, said Tegethoff, currently in his seventh year as girls golf coach. Tegethoff also was an assistant HHS boys golf coach for 20 years.



"Last year, our team didn't qualify for state, but we had the Holaday girls, and they did well," he said. "Taylor missed qualifying by just a couple of shots."

But Tegethoff is optimistic that this year's team will get closer to a state berth than last year.

"If we can improve as much this year as we did last year," he said, "we could have an outside shot at qualifying our team for state."

Tegethoff also looks for seniors Michaela Adcock, Breanna Gouge and Celana Zehner to excel this year.

"We're hoping we can get one of those three seniors to enter the mix and help us on varsity," he said.

Another challenge for this year will be battling it out with Jefferson West, the only other Big Seven League school to offer a girls golf program, to see who will emerge as the top team in the league.

"Jeff West is always tough," Tegethoff said.

The Lady Cats' 2017 golf season will begin at 8:30 a.m. Wednesday against Jeff West at the Village Greens golf course near Ozawkie, followed by a Piper High School-hosted meet at 1 p.m. Tuesday, Sept. 5 at Dub's Dread Golf Course in Kansas City.



Holton High School girls golf coach Dennis Tegethoff (shown above at left) coached golfers Celana Zehner (center) and Michaela Adcock as they practiced their putts on Thursday at the Holton Country Club. Photos by Brian Sanders

2017 HOLTON HIGH SCHOOL GIRLS GOLF

2017 Holton High School Girls Golf Schedule

| Date | Location | Time |
|----------|-----------------------------------|------------|
| Aug. 21 | Village Greens (V) | 8:30 a.m. |
| Sept. 5 | Dub's Dread Golf Course (V) | 1 p.m. |
| Sept. 7 | Wamego Country Club (V) | 3 p.m. |
| Sept. 11 | Holton Country Club (JV) | 3 p.m. |
| Sept. 20 | Paola Country Club (V) | 3 p.m. |
| Sept. 20 | North Topeka Golf Center (JV) | 3 p.m. |
| Sept. 21 | Council Grove Country Club (V) | 3 p.m. |
| Sept. 25 | Village Greens (V) | 9 a.m. |
| Sept. 28 | Village Greens (JV) | 1 p.m. |
| Oct. 2 | Silver Lake Jr-Sr High School (V) | 3 p.m. |
| Oct. 5 | Falton Lakes Golf Course (V) | 1 p.m. |
| Oct. 9 | Regionals (V) | TBA 9 a.m. |
| Oct. 16 | State (V) | TBA 9 a.m. |

This schedule brought to you by:

**Holton Community Hospital/
Family Practice Associates**

785-364-2116 • 1110 Columbine Dr., Holton

785-364-2126 Holton • 785-986-6630 Hoyt • 785-866-4775 Wetmore

Royal Valley volleyball team returns five starting players

By Ali Holcomb

This will be Gary Armstrong's second year as the head coach of the Royal Valley High School volleyball team, and he's hoping to continue to build the program with some new underclassmen.

The Lady Panthers were 9-26 last season and 6-10 in the Big Seven League. Armstrong predicts that Nemaha Central and Holton will continue to be the top contenders in the league this year.

While the RVHS team graduated four seniors last year, it has plenty of returning starters, including senior Danielle Stithem, juniors Alyssa Gooderl, Mary Broxterman and Emily Albright



and sophomore Kenzie Ogden.

"We have a young team this year, including a lot of freshmen, and I'm hoping the older classes can help them fit in and learn," Armstrong said.

Broxterman, an outside hitter, was named to both the Big Seven all-league team and the The Holton Recorder's all-county team last season.

She was one of the top attackers in the league last year with 290 kills. She also had the most kills per set in the entire Big 7 league, averaging 3.67 kills per set.

Broxterman also recorded 139 total blocks last season and 32 ace serves.

Stithem is expected to be a setter and outside hitter for the team this year. She was one of the top servers in the Big Seven last year with a 91.7 percent serving percentage. She also had 305 total

digs in 74 sets.

Ogden will continue to be a valuable and flexible player for the team, serving as a back row specialist and setter.

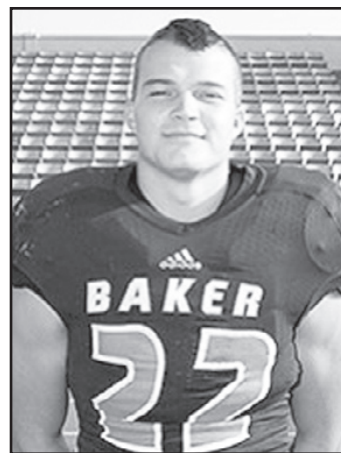
Gooderl and Albright will also help round out the team. Gooderl is an outside hitter, and Albright is a defensive specialist.

Armstrong said he was able to work with some of the girls over the summer in the club volleyball setting.

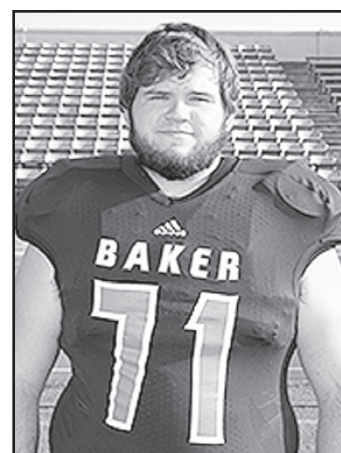
Katie Davis will serve as Armstrong's assistant coach again this year.

The Panthers open their season with an invitational this Saturday in Marysville. The invitational begins at 9 a.m. and will also include Nemaha Central and Sabetha.

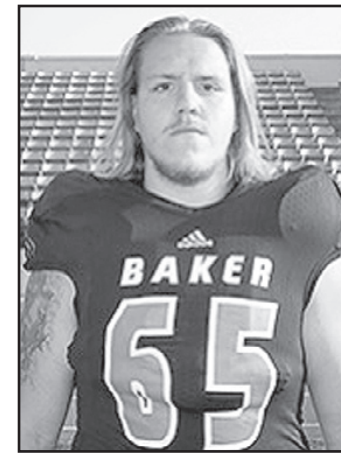
Baker picked to 3-peat in league



Indie Allen



Cooper Allen



Brandon Lehnerr

Three Holton High School grads are listed as members of the Baker University football team this season, it has been reported.

Brandon Lehnerr is listed as a 6-3, 240-pound freshman defensive lineman.

Cooper Allen is listed as a 6-0, 260, sophomore defensive lineman.

Indie Allen is listed as a 6-1, 215, junior linebacker.

Baker is picked to three-peat as the top football team in the Heart of America Football Conference this season.

The team is also ranked No. 2 nationally in the NAIA (National Association of Intercollegiate Athletics) football coaches pre-season poll after finishing 14-1 and NAIA National Champion Runner-Up last season.

2017 ROYAL VALLEY HS VOLLEYBALL

2017 Royal Valley High School Volleyball Schedule

| Date | Opponent | Location | Time |
|----------|----------------------|-------------|-----------|
| Aug. 26 | Marysville V Tourn. | Marysville | 9 a.m. |
| Sept. 2 | Jeff West V Tourn. | Meriden | 8 a.m. |
| Sept. 5 | Riverside | Hoyt | 5 p.m. |
| Sept. 9 | P. Ridge JV Tourn. | P. Ridge | 8:30 a.m. |
| Sept. 12 | ACCCHS | Effingham | 5 p.m. |
| Sept. 19 | Holton | Holton | 5 p.m. |
| Sept. 23 | Osage City JV Tourn. | Osage City | 9 a.m. |
| Sept. 26 | Sabetha | Hoyt | 5 p.m. |
| Sept. 28 | Jeff West | Meriden | 5 p.m. |
| Sept. 30 | Silver Lake Tourn. | Silver Lake | 8 a.m. |
| Oct. 3 | Nemaha Central | Hoyt | 5 p.m. |
| Oct. 7 | Rock Crk. JV Tourn. | Flush | 9 a.m. |
| Oct. 10 | Perry-LeCompton | Perry | 5 p.m. |
| Oct. 14 | Abilene Tourn. | Abilene | 9 a.m. |
| Oct. 17 | Hiawatha | Hoyt | 5 p.m. |
| Oct. 21 | Sub-State Tourney | TBA | TBA |
| Oct. 27 | State Tourney | Salina | TBA |
| Oct. 28 | State Tourney | Salina | TBA |

This schedule brought to you by:

AL'S OVERHEAD DOOR SERVICE, INC.

5000 NW 35th St., Topeka, KS • 785-286-2555

Golf tourney fundraiser set by Touchdown Club

The eighth annual golf tournament and member picnic for the Holton Touchdown Club is set for Saturday, Aug. 26, at the Holton Country Club, it has been announced.

Lunch will be served at 11 a.m., prior to the start of the golf tourney.

All proceeds from the tourney are used to enhance equipment, technology, facilities and performance of football programs at HHS, HMS and youth football programs.

Local folks are encouraged to participate by playing golf (\$40 per person), helping as a corporate sponsor with team (\$160), being a corporate sponsor (\$100) or just attending the lunch and social (\$15 per person).

Contact Shannon Wright (785-408-2224) or Don Fate (785-364-7967) for more information.

You can also mail in registrations to Holton Touchdown Club, P.O. Box 161, Holton, KS, 66436.

Wright listed as member of Pittsburg State Gorillas

Holton High grad Jaxon Wright, a 5-11, 167-pound, senior safety, is listed as a member of the Pittsburg State University Gorillas football team this season, it has been reported. Wright is listed as a returning two-year letterman.

PSU, an NCAA Division II program, is picked to finish fourth in the Mid-America Intercollegiate Athletic Association by both coaches

polls and media polls, it was reported.

The Gorillas finished 7-4 and in fourth place last season in the Mid-America conference.



Jaxon Wright

Thank You

On behalf of the HHS Football Team, we want to thank Heartland Meat Market, Denison State Bank, Walmart, Brooks and Tonya Barta, Gary Keehn, and Mike Mosier for the donations and contributions to help make the annual football kickoff a fun and successful event!

Thank you!
~ the HHS Football Senior Parents



UPCOMING PREP SPORTS

WEDNESDAY, AUGUST 23: HHS Varsity Girls Golf – 8:30 a.m. @ Village Greens

SATURDAY, AUGUST 26: HHS 9th Volleyball – Wamego Tournament – 9 a.m. @ Wamego; RVHS Volleyball – Marysville Varsity Tournament – 9 a.m. @ Marysville

TUESDAY, AUGUST 29: JHHS V/JV Volleyball – Triangular – 5 p.m. @ Oskaloosa

Sponsored by
THE Farmers State Bank
209 Montana Avenue • Holton, KS 66436
Phone 785.364.4691 • Fax 785.364.4330
Hometown Banking with Your Neighbors and Friends
www.fsbks.bank

NOTICE:

The Holton Recorder is a local dealer for Superior Rubber Stamp & Seal Company of Wichita. Contact The Recorder for the following supplies:

- Pre-inked Stamps
- Self-inking Stamps
- Daters
- Markers
- Name Tags
- Awards
- Wall Signs
- Plaques

109 W. Fourth St. 18 a.m. - 5 p.m. M-F | 785-364-3141 | holtonrecorder@giantcomm.net

Art Walk

Ruth Ensley-Kunz of Onaga (shown at right) displayed some of her paintings on the first floor of the Jackson County Courthouse during the recent art walk. Ensley-Kunz said she uses inspiration from nature for her paintings.

Photo by Ali Holcomb



Commissioners give OK for scout to erect new flag pole

By Ali Holcomb
The flagpole on the southwest corner of the Jackson County courtyard may be updated as part of an Eagle Scout project, it was reported.

During a recent Jackson County Commission meeting, the commissioners met with local Boy Scout Brody Page of Troop 64.

Page said he would like to update the flagpole, which features both American and Kansas flags, on the southwest corner of the courtyard as his Eagle Scout project.

Page has discussed upgrading the pole with Chad Phillips, head Courthouse discussion, and both have researched and found a company to construct the pole.

The commissioners OK'd the project, and Page will have to raise funds for the purchase of the pole, it was reported.

The number '38' is inscribed in the cement base of the flag pole which may indicate when the pole was originally erected, it was reported.

In other business, according to the minutes of Aug. 7, the commission:

* Accepted the low fuel bid of \$16,560 submitted by Knotty Pine Oil Company. The other bid was \$16,607.20 from Haag Oil Company.

* Heard a weekly report from Dan Barnett, road and bridge director.

Barnett said crew members were hauling rock onto 214th Road.

A total of 3,000 tons of rock was purchased for the road, which was paid for out of the .04 special retailers' sales tax. Barnett that once applied, the road will be packed well for the upcoming winter months.

* Learned from Barnett that there was recently some ex-

tensive work completed on roads in the southeast corner of the county. This work is part of a larger plan to completely clean all the ditches in Jackson County.

Barnett said that the crews are hitting major problem areas first and then will start from the south and head north.

* Discussed a request to put in an entrance for a new house on Y Road, which is a shared road with Jefferson County.

Barnett said he would work with the Jefferson County road administrator to determine which county is responsible for the road.

* Heard concerns about drainage issues at 94th and U4 Roads, as well as other properties in the county.

* Addressed concerns about the use of large rock on some county roads. Barnett said the larger rock was brought in to avoid a large loss of gravel with major rains expected that week.

* Met in executive session with County Counselor Alex Morrissey and Jackson County Clerk Kathy Mick for 15 minutes to discuss a matter of client/attorney privilege. No action was taken back in open session.

* Met with residents Ted Bingham and Lee Kahn to discuss a fence issue on 160th Road. Morrissey advised them to seek counsel from a private attorney since the commissioners can only act as fence viewers.

* Discussed with Morrissey a request from *The Holton Recorder* regarding information on any settlement made by KCAMP insurance on behalf of the county.

The commissioners said they will draft a memo regarding the county's decline for

comment since Jackson County Sheriff Tim Morse – and not the county – was named in the suit mentioned.

* Learned from John Kennedy, Banner Creek Reservoir director, that revenue at the lake totaled \$4,969.50 the week of July 24-29 and \$4,473 the week of July 30 – Aug. 5.

Kennedy reported that he received a request from Peachy Hill Adventures to allow them to utilize Banner Creek Reservoir to operate their business, which hosts campouts, trail rides and other activities for the business' clients.

The commissioners said they wanted to view the information and discuss the issue with Morrissey before making a decision.

* Met with Pat Korte, emergency management director, who presented two nominations for Firefighter Of The Year.

This is the second year a county firefighter is being honored with the award. In 2016, Lieutenant John Motto of the Holton Fire Department received the honor at a Jackson County Firefighters' Association meeting.

Korte also presented a draft of an emergency route map of Banner Creek Reservoir. Commissioner Janet Zwonitzer said she would review the local cove nicknames presented before the map is finalized.

* Met in executive session for 10 minutes to discuss a personnel matter. No action was taken back in open session.

* Met with Chad Phillips, head custodian, who reported on several updates made to the new commission meeting room planned for the first floor of the Courthouse.

* Adjourned the meeting at 4:30 p.m.

INSTANT CASH

We Buy RV's!

OLATHE
Ford
RV CENTER

913-856-8145 www.OlatheFordRV.com

NEWS TIP?

Call
The Holton
Recorder!
(785) 364-3141
Thank You.

Public Notice

Notice of Vote - Meadowlark Extension District #7

Pursuant to K.S.A. 79-2925b, as amended by 2014 House Bill 2047

| | Total Property Tax Levied | Mill Levy* |
|-----------------|---------------------------|------------|
| 2017 Budget | \$ 856,392 | 2.033 |
| 2018 Budget | \$ 855,995 | 1.935 |
| Approved (vote) | 12 | to 0 |

* 2017 mill levy is actual. 2018 mill levy is estimated.

Area Health And Medical Directory

Dentistry

Holton Dental
Alex C. Gilliland D.D.S.
Samantha C. Rieschick D.D.S.
HOLTON MEDICAL CENTER
1100 COLUMBINE DRIVE
HOLTON, KS 66436
Phone: 785-364-3038 Fax: 785-364-3037
www.holtondental.org
New Patients Welcome!

U-Smile!
Mark L. Underwood,
D.D.S.
Orthodontics and
Dentofacial Orthopedics
1100 Columbine,
Holton
Call: (785) 273-2499
www.u-smile.com

Holton Family Dentistry
Benjamin P. Rutherford, DDS
Carrie B. Peterson, DDS
Michael Myers, DDS
Providing Comprehensive Dental
Care for Adults and Children
208 W. 4th St. • Holton
785-364-4636

AWESOME!
A business directory
ad this size
costs just \$8.20
per week in
The Holton Recorder!

Family Practice

FAMILY PRACTICE ASSOCIATES
Joel Hutchins, M.D.
Clint Colberg, M.D.
Erin Locke, M.D.
Diane Newth, APRN
Jamie Stuke, APRN
Ashley Reinecke, APRN
Jill Collins, APRN
Josh Moulin, P.A.
Bill Kinkade, P.A.

Holton Clinic
1110 Columbine Drive • Holton, KS
(785) 364-2126
Mon. - Fri. 7:30 a.m. - 8 p.m.
Sat. 8 a.m. - noon

Hoyt Clinic
117 West 3rd • Hoyt, KS
(785) 986-6630
M-F 7 a.m. - 4 p.m. - CLOSED WED.
Toll Free 1-866-986-6630

Wetmore Clinic
323 2nd St. • Wetmore, KS
(785) 866-4775
M-F 7 a.m. - 4 p.m. - CLOSED WED.

Holton Community Hospital
1110 Columbine Drive • Holton, KS
(785) 364-2116
Toll Free 1-877-315-7291
www.holtonhospital.com

Optometry

Dr. Brett Oxandale, Optometrist
4123 S.W. Gage Center Drive, Suite 126
Topeka, KS 66604 • PHONE (785) 273-6717
Comprehensive Eye Health Examination
Contact Lens, Glasses, Treatment of Eye Diseases
Most Insurance Plans Accepted
NEW HOURS!
MONDAY - THURSDAY: 8 a.m. - 5 p.m.
FRIDAY: 8 a.m. - 3 p.m.

Mental Health

KANZA
Mental Health Center
713 Idaho, Holton, Kan.
785-364-4536
After hours crisis numbers:
785-742-3666
785-364-4536
Call to be seen on the same day.

Hope, Help and Health
PROBLEM WITH ALCOHOL OR DRUGS?
Call
Dr. Ron Cobb DMin LCAC
Addiction Therapist
at 785-305-0549

Optometry

Experience Eye Care Excellence!
lifetimeeyecare
Leslie Gallagher, O.D., FAAO
Nicole Meerpohl, O.D.
Stacey Looper, O.D.
• Comprehensive Family Eye Health Examinations
• Diagnosis and Treatment of Eye Diseases & Injuries
• Emergency Treatment
• Refractive Surgery Pre & Post Op.
• Designer Eyewear Gallery
• Guaranteed Contact Lens Success Program
• Two-Year Frame & Lens Warranty
• We accept Medicare Assignment & Most Insurance Plans
121 W. 4th St., Holton
785-364-5000
After Hours Emergencies
Call 364-5888
www.lifetimeholton.com

Pharmacy

WALMART PHARMACY
U.S. 75 Hwy. S. • Holton, KS
Hours: Monday - Friday: 8 a.m. - 7 p.m.
Saturday: 9 a.m. - 7 p.m.
Sunday: 10 a.m. - 6 p.m.
Phone: 785-364-4619
Bobbi McGrath - R. Ph.
Pat Halton - R. Ph.
Heather Crispin - R. Ph.
Brooke Black - Pharm. D.

Optometry

Advertising Pays!

Ophthalmology

Randall J. Kresie, M.D.
Specializing in
Cataract, Glaucoma
and Laser Surgery
Medical eye care by referral
For appointments, call
785-233-0011
Clinic located in
the office of Lifetime
Eye Care
Surgery performed at
Holton Community
Hospital

Family Practice

Community HealthCare System
Holton Family Health Center
1603 W. 4th, Holton • www.chcsks.org
Clinic: 364-3205 • Fitness Center: 364-5775
Home Health: 1-800-622-6124
Providers:
• David Allen, MD • Nancy Zidek, MD • Roline Campbell, APRN-BC
• Jana Kramer, PA • Heather Myers, APRN
Nicole Huey, APRN
Hours: M-Th: 7 a.m. - 7 p.m. • Fri: 7 a.m. - 6 p.m. • Sat: 8 a.m. - 12 noon

Muddy Creek Family Clinic, LLC
Netawaka, KS
Michael Keehn, MD
Board Certified Family Physician
Call 785-933-2000
Hours: Monday - Thursday: 7:30 a.m. - 5 p.m.
Friday: 7:30 a.m. - 4 p.m.

Hospice

Jackson County Friends of Hospice
Working together with
Holton Community Hospital Hospice.
Supportive Care for Hospice patients,
their caregivers and families.
785-364-9617

Home Health

Holton Community Hospital
Family Practice Associates
HOME HEALTH AGENCY
1110 Columbine Drive, Holton, KS
Let our expert nurses and therapy professionals assist you.
Phone: (785) 364-9617

WOW!

A business directory ad this size costs just \$4.10 per week in The Holton Recorder!



Home Health

Ann's Home Health Agency
"An Experienced and Professional Home Health Agency"
785-364-2952
Recover from your surgery, illness or injury at home.



Veterinary

Banner Creek Animal Hospital
Full Service Small & Large Animal Practice
Fully Equipped Laboratory & Diagnostic Capabilities
Mon. - Fri. 8 a.m. - 5:30 p.m. 22290 Hwy. 75
Sat. 8 a.m. - 2 p.m. 364-4560 Holton
Dan A. Degenhardt, DVM

HEARTLAND
VETERINARY HEALTH CENTER
Drs. Don & Amy Sunday, D.V.M.
Dr. Jessica Stallbaumer, D.V.M.
Complete care for both small & large animals
Hours: 8 a.m. - 5 p.m., M-F • 8 a.m. - noon, Sat.
2107 Frontage Rd., Holton • 364-4495

Jackson County 2016 Delinquent Tax List

(First published in The Holton Recorder, Holton, Kan., on Monday, Aug. 7, 2017.)

SALE OF JACKSON COUNTY - NOT FINAL SALE NOTICE IS HEREBY GIVEN THAT LINDA GERHARDT, TREASURER OF JACKSON COUNTY, KANSAS WILL SELL AT MY OFFICE IN THE CITY OF HOLTON ON THE FIRST TUESDAY IN SEPTEMBER, 2017 THE FOLLOWING LANDS AND TOWN LOTS SITUATED IN SAID COUNTY AND STATE, UNLESS SAID TAXES AND CHARGES ARE PAID BEFORE THE DATE OF SALE. SALE WILL BE MADE TO JACKSON COUNTY ONLY, NOT TO ANY INDIVIDUALS AS PROVIDED BY STATUTE OF KANSAS 79-2301. LISTED BELOW IS A CERTIFIED LIST OF DELINQUENT REAL ESTATE TAXES FOR TAX YEAR 2016.

CIRCLEVILLE
BROWNING, ANNETTA L
Prop Addr: 303 GRANT ST 66416 CIRCLEVILLE (O.T.), E28 LOT 4 & W35 LOT 3 BLK 3 SECTION 21 TOWNSHIP 06 RANGE 14E 193.26
DELANY, HEATH
Prop Addr: SHERIDAN ST 66416 CIRCLEVILLE (O.T.), LOT 1 BLK 7 & BEG SW/C SAID LOT S22.5 E24 N22.5 W24 TO POB 13.14
DELANY, HEATH
Prop Addr: 201 LINCOLN ST 66416 CIRCLEVILLE (O.T.), BEG SE/C BLK 7 W100 N80 E100 S80 TO POB SECTION 21 TOWNSHIP 06 RANGE 14E 329.84
THORTON, TERRI
Prop Addr: 307 LINCOLN ST 66416 CIRCLEVILLE (O.T.), LOT 8 BLK 8 SECTION 21 TOWNSHIP 06 RANGE 14E 249.14

DELIA
HOLTHAUS, EDITH
Prop Addr: 301 OAK ST 66418 S28, T09, R13E, LOTS 45 & 47 NORA AVE 605.12
JOHNSON, DE ELLA A & CYNTHIA LEE
C/O PENDLETON, RYAN
Prop Addr: 519 JACKSON AVE 66418 DAVID, LOTS 5,7,9 & 11 JACKSON AVE SECTION 28 TOWNSHIP 09 RANGE 13E 409.80
KELLER, FRED C
Prop Addr: 519 WASHINGTON AVE 66418 DAVID, LOTS 1 THRU 9 WASHINGTON AVE (ODD) SECTION 28 TOWNSHIP 09 RANGE 13E 774.69
MCMILLIN, H JOE & VIRGINIA C
Prop Addr: 504 DELIA AVE 66418 DAVID (1ST ADD.), LOTS 18,20,22 & 24 DELIA AVE SECTION 28 TOWNSHIP 09 RANGE 13E 816.92
MELECHINSKY, GARY A & REBECCA ADAMS
Prop Addr: 403 NORA AVE 66418 DAVID (1ST ADD.), LOTS 39,41 & 43 NORA AVE SECTION 28 TOWNSHIP 09 RANGE 13E 426.04
WILSON, ROBERT H & HELEN J
Prop Addr: 203 EAST ST 66418 DELIA (O.T.), LOTS 61,63,65 & 67 EAST ST SECTION 28 TOWNSHIP 09 RANGE 13E 395.87

DENISON
ANDERSON, PAUL L
Prop Addr: 400 SECOND ST 66419 DENISON (O.T.), LOTS 51,53,55,57 WESTERN AVE SECTION 33 TOWNSHIP 07 RANGE 16E 243.08
CAPPLEMAN, EDWILL
Prop Addr: 308 WESTERN AVE 66419 DENISON (O.T.), LOTS 86-108 WESTERN AVE (EVEN) SECTION 33 TOWNSHIP 07 RANGE 16E 292.82
CLARK, CARROL
Prop Addr: 206 HIGHLAND AVE 66419 DENISON (O.T.), LOTS 72-78 HIGHLAND AVE (EVEN) SECTION 33 TOWNSHIP 07 RANGE 16E 744.58
ELLIS, AMBER D
Prop Addr: 304 SECOND ST 66419 DENISON (O.T.), LOTS 50-56 WESTERN AVE (EVEN) SECTION 33 TOWNSHIP 07 RANGE 16E 285.07
GEORGE, CHARLES V & PENNY KAY
Prop Addr: 507 CENTRAL AVE 66419 DENISON (O.T.), LOTS 151-169 CENTRAL AVE (ODD) ALONG WITH 1/2 ADJ VAC STREET 719.05
GREEVE, RICHARD L
Prop Addr: 103 SECOND ST 66419 DENISON (O.T.), E80 FT LOTS 44,46 & 48 CENTRAL AVE SECTION 33 TOWNSHIP 07 RANGE 16E 249.79
HARDS, GARY R & VIVA M
Prop Addr: 506 CENTRAL AVE 66419 DENISON (O.T.), LOTS 160 THRU 168 EVEN CENTRAL AVE ALONG WITH 1/2 ADJ VAC 369.32
HARRIS, JEFF
Prop Addr: 207 HIGHLAND AVE 66419 DENISON (O.T.), LOTS 75-79 HIGHLAND AVE (ODD) SECTION 33 TOWNSHIP 07 RANGE 16E 130.85
HOPKINS, JASON R & KIM E
Prop Addr: 302 HIGHLAND AVE 66419 DENISON (O.T.), LOTS 86-92 HIGHLAND AVE (EVEN) SECTION 33 TOWNSHIP 07 RANGE 16E 1,023.15
HOPKINS, KARI J
Prop Addr: 101 HIGHLAND AVE 66419 DENISON (O.T.), LOTS 29 & 31 HIGHLAND AVE SECTION 33 TOWNSHIP 07 RANGE 16E 387.37
LAMASTUS, RAY & BARBARA K
Prop Addr: 202 FOURTH ST 66419 DENISON (O.T.), LOTS 110-120 HIGHLAND AVE (EVEN) SECTION 33 TOWNSHIP 07 RANGE 16E 696.07
LOVELL, LONNIE D & CAROL A
Prop Addr: 601 EASTERN AVE 66419 DENISON (O.T.), LOTS 171-183 EASTERN AVE (ODD) ALONG WITH 1/2 ADJ VAC SIXTH 203.12
MCGUIRE, VIVIAN GAIL
Prop Addr: 407 CENTRAL AVE 66419 DENISON (O.T.), LOTS 135-139 CENTRAL AVE (ODD) SECTION 33 TOWNSHIP 07 RANGE 16E 675.12
MONTGOMERY, BRIAN D & NICOLE L
Prop Addr: 306 CENTRAL AVE 66419 DENISON (O.T.), LOTS 100-108 CENTRAL AVE (EVEN) SECTION 33 TOWNSHIP 07 RANGE 16E 433.69
ROBERTSON, SHIRLEY M; TR
% NELSON, JAMES DAVID & TAMARRA
Prop Addr: 301 EASTERN AVE 66419 S33, T07, R16E, LOTS 81-89 EASTERN AVE (ODD) 713.60
SIEBERT, SANDRA M % CLINKENBEARD, CALEB
Prop Addr: 307 HIGHLAND AVE 66419 DENISON (O.T.), LOTS 103-109 HIGHLAND AVE (ODD) SECTION 33 TOWNSHIP 07 RANGE 16E 385.97

STEWART, RAGINA M
Prop Addr: 211 CENTRAL AVE 66419 DENISON (O.T.), LOTS 75-79 CENTRAL AVE (ODD) SECTION 33 TOWNSHIP 07 RANGE 16E 321.22
SWEANY, ROGER L
Prop Addr: 102 K-16 HWY 66419 DENISON (O.T.), BEG 57.9S NW/C LOT 18 CENTRAL AVE S TO SW/C LOT 10 CENTRAL AVE 361.79
VILLINES, RENEE M; JOHNSON, DARIN L
Prop Addr: 303 CENTRAL AVE 66419 DENISON (O.T.), LOTS 85 THRU 97 (ODD) CENTRAL AVE SECTION 33 TOWNSHIP 07 RANGE 16E 1,311.23

HOLTON
ACKERMAN, LOIS & FULKERSON, DANIEL
Prop Addr: 717 NEW JERSEY AVE 66436 HOLTON (O.T.), LOT 91 NEW JERSEY AVE SECTION 03 TOWNSHIP 07 RANGE 15E 642.03
APTURE C/O CPI
Prop Addr: 818 WISCONSIN AVE 66436 HOLTON (O.T.), LOT 106 WISCONSIN AVE SECTION 03 TOWNSHIP 07 RANGE 15E 1,530.22
BAILEY, KENNETH F & CINDIE
Prop Addr: 400 INDIANA AVE 66436 DRAKE & FENN'S SUB. NO 1, LOT 2 INDIANA AVE LESS RD ROW SECTION 03 TOWNSHIP 07 RANGE 15E 2,048.97
BICKFORD, KEVIN
Prop Addr: 625 OHIO AVE 66436 HOLTON (O.T.), LOT 83 & N/2 LOT 81 OHIO AVE SECTION 03 TOWNSHIP 07 RANGE 15E 1,935.59
BOTTENBERG, KARI A
Prop Addr: 200 TOPEKA AVE 66436 INTERSTATE ADD., LOTS 16,17 & 18 BLK 9 TOPEKA AVE SECTION 09 TOWNSHIP 07 RANGE 15E 498.84
BROCKMAN, SCOTT D, PENNY J, CODY D
Prop Addr: 215 LINCOLN AVE 66436 INTERSTATE ADD., LOTS 31 & 32 BLK 9 LINCOLN AVE SECTION 09 TOWNSHIP 07 RANGE 15E 1,409.30
BUEHLER, CAROL I & DAROLD JAY
Prop Addr: 612 WISCONSIN AVE 66436 HOLTON (O.T.), W125 LOT 76 WISCONSIN AVE SECTION 03 TOWNSHIP 07 RANGE 15E 1,138.66
BURGET, GEORGE L & DOROTHY H
Prop Addr: TENTH ST 66436 S03, T07, R15E, BEG 742.5N & 1320E SW/C NW/4 N235 TO C/L OF ELK CRK W140 46.64
CABALLERO, LETICIA
Prop Addr: 607 NEW YORK AVE 66436 HOLTON (O.T.), LOT 73 NEW YORK AVE SECTION 03 TOWNSHIP 07 RANGE 15E 1,270.62
CHILDERS, JUDY L
Prop Addr: 609 OHIO AVE 66436 HOLTON (O.T.), N/2 LOT 73 & S/2 LOT 75 OHIO AVE SECTION 03 TOWNSHIP 07 RANGE 15E 1,138.66
CLARK, HOWARD DAVID
Prop Addr: 426 NEW JERSEY AVE 66436 HOLTON (O.T.), LOT 56 NEW JERSEY AVE SECTION 03 TOWNSHIP 07 RANGE 15E 2,382.30
CONGER, TWILA I; TR C/O LEON CONGER
Prop Addr: 704 MINNESOTA AVE 66436 DRAKE & FENN'S SUB. NO 1, LOTS 30,32 & W/2 LOT 28 MINNESOTA AVE & ADJ VAC ALLE 1,015.02
DEVADER, DOUGLAS W; FUQUA, MARY E
Prop Addr: 1001 NEW JERSEY AVE 66436 ELK GROVE ADD., LOTS 1 & 3 NEW JERSEY AVE SECTION 03 TOWNSHIP 07 RANGE 15E 516.92
DPJP SERVICES KANSAS, LLC
Prop Addr: 722 NEW JERSEY AVE 66436 HOLTON (O.T.), LOT 96 NEW JERSEY AVE SECTION 03 TOWNSHIP 07 RANGE 15E 505.03
EDWARDS, DENNIS J
Prop Addr: 620 VERMONT AVE 66436 HOLTON (O.T.), LOT 82 VERMONT AVE SECTION 03 TOWNSHIP 07 RANGE 15E 150.38
EDWARDS, DENNIS JAMES
Prop Addr: 415 WISCONSIN AVE 66436 HOLTON (O.T.), LOT 49 WISCONSIN AVE SECTION 03 TOWNSHIP 07 RANGE 15E 1,102.52
FLOYD, TIMOTHY L & LINDA K
Prop Addr: 825 PENNSYLVANIA AVE 66436 HOLTON (O.T.), LOT 111 PENNSYLVANIA AVE SECTION 03 TOWNSHIP 07 RANGE 15E 825.63
FORD, LORI LYNN
Prop Addr: 902 KANSAS AVE 66436 UNIVERSITY ADD., LOTS 2 & 4 BLK C KANSAS AVE SECTION 04 TOWNSHIP 07 RANGE 15E 1,101.27
GALSTER, LEROY
Prop Addr: 522 NEW YORK AVE 66436 HOLTON (O.T.), S52.5 LOT 68 & N15 LOT 66 NEW YORK AVE SECTION 03 TOWNSHIP 07 RANGE 15E 781.68
HARRIS, ERIC W
Prop Addr: 407 INDIANA AVE 66436 DRAKE & FENN'S SUB. NO 1, LOT 7 INDIANA AVE SECTION 03 TOWNSHIP 07 RANGE 15E 146.19
HELLER, JOSEPH WAYNE
% HUSKEY, CASEY & DOTY, JAMEY
Prop Addr: 709 PENNSYLVANIA AVE 66436 HOLTON (O.T.), LOT 89 PENNSYLVANIA AVE SECTION 03 TOWNSHIP 07 RANGE 15E 943.39
HELLER, JOSEPH WAYNE
Prop Addr: 425 W SECOND ST 66436 WILSON'S ADDITION, LOTS 10,11 & 12 SECTION 09 TOWNSHIP 07 RANGE 15E 1,061.16
HOAGLAND, JAMES W & NORMA
Prop Addr: 901 WASHINGTON AVE 66436 UNIVERSITY ADD., LOTS 1,3 & 5 BLK K & ADJ N/2 OF VAC NINTH ST SECTION 04 2,284.96
HOPKINS, EVERETT & PATTY
Prop Addr: 523 W TENTH ST 66436 UNIVERSITY ADD., LOTS 36,38 & 40 & VAC ALLEY ADJ & W6 LOTS 37 & 39 SECTION 04 808.68
JEFFERSON, JEFFERY
Prop Addr: 206 NEW JERSEY AVE 66436 HOLTON (O.T.), LOT 18 NEW JERSEY AVE SECTION 10 TOWNSHIP 07 RANGE 15E 236.79
JOHNSON, RHONDA J
Prop Addr: 517 PENNSYLVANIA AVE 66436 HOLTON (O.T.), S03, T07, R15E, LOT 65 PENNSYLVANIA AVE SECTION 03 TOWNSHIP 07 RANGE 15E 527.02
KOGER, WILLIAM C & CAROLYN A % LORI FORD
Prop Addr: 525 PENNSYLVANIA AVE 66436 HOLTON (O.T.), LOT 69 PENNSYLVANIA AVE SECTION 03 TOWNSHIP 07 RANGE 15E 1,019.19

LONGHOFER, JAMES G & BRANDEE L
Prop Addr: 410 IOWA AVE 66436 HOLTON (O.T.), LOT 48 IOWA AVE SECTION 04 TOWNSHIP 07 RANGE 15E 2,452.67
LUNDIN, CHAD
Prop Addr: DAKOTA AVE 66436 VETTER'S 4TH ADD., N/2 LOT 57 DAKOTA AVE SECTION 04 TOWNSHIP 07 RANGE 15E 48.03
MCCAMMON, CHAD & STEPHANIE
Prop Addr: 203 VERMONT AVE 66436 HOLTON (O.T.), LOT 15 & S30 LOT 17 VERMONT AVE SECTION 10 TOWNSHIP 07 RANGE 15E 1,176.86
MEISTER, SANDRA L C/O CLAYCAMP, SANDRA
Prop Addr: 518 WISCONSIN AVE 66436 HOLTON (O.T.), LOT 66 WISCONSIN AVE SECTION 03 TOWNSHIP 07 RANGE 15E 590.54
MEYER, LYNNA & CAROL JOYCE; TR % STITES, FLOYD R JR & JEANETTE
Prop Addr: 224 W SECOND ST 66436 HOLTON (O.T.), LOT 16 WISCONSIN AVE SECTION 10 TOWNSHIP 07 RANGE 15E 787.37
MONTGOMERY, NOEL R & MEGAN L
Prop Addr: FIRST ST 66436 S10, T07, R15E, BEG 50S C/L OF S END NEW JERSEY AVE S786.8 TO POB E265 N145 W265 257.54
MOORE, CLIFFORD C C/O MOORE, TEDDY
Prop Addr: 935 IOWA AVE 66436 UNIVERSITY ADD., LOTS 35,37,39 & N/2 LOT 33 BLK C IOWA AVE SECTION 04 39.38
MORRIS, ELLIOTT D
Prop Addr: 802 VERMONT AVE 66436 HOLTON (O.T.), LOT 100 VERMONT AVE SECTION 03 TOWNSHIP 07 RANGE 15E 440.41
OWENS, ROBERT T
Prop Addr: 323 NEW JERSEY AVE 66436 HOLTON (O.T.), LOT 41 NEW JERSEY AVE SECTION 10 TOWNSHIP 07 RANGE 15E 1,782.29
SCHEID INC
Prop Addr: ROGERS DR 66436 HOLTON INDUSTRIAL PARK, LOT 8 & 9 LESS E100 FT LOT 8 SECTION 33 TOWNSHIP 06 340.41
SCHEID, RUSSELL; SPIKER, TERESA M
Prop Addr: FRONTAGE RD 66436 HOLTON INDUSTRIAL PARK, E100 FT LOT 8 SECTION 33 TOWNSHIP 06 RANGE 15E 262.31
SCHEID, RUSSELL; SPIKER, TERESA M
Prop Addr: FRONTAGE RD 66436 HOLTON INDUSTRIAL PARK, BEG NE/C SW/4 W217.8 TO POB W70 S300 E70 N300 TO POB 244.35
SNYDER, HARPER; SNYDER TATUM P
Prop Addr: 915 PENNSYLVANIA AVE 66436 S03, T07, R15E, BEG 230N NE/C LOT 111 PENN AVE N70 W187 S70 E187 TO POB 1,513.72
SNYDER, SHARON E
Prop Addr: 652 W FOURTH ST 66436 S04, T07, R15E, BEG 240E NE INTERSEC FOURTH ST & COLORADO AVE E83.4 E29.1 2,715.61
STENGER, GLENDA L & STEVEN J
Prop Addr: 415 VERMONT AVE 66436 HOLTON (O.T.), LOT 49 VERMONT AVE SECTION 03 TOWNSHIP 07 RANGE 15E 795.10
STEWART, RAGINA M
Prop Addr: 128 W FIFTH ST 66436 HOLTON (O.T.), LOT 12 LESS D6.5 OF S60.5 PARK AVE SECTION 03 TOWNSHIP 07 RANGE 15E 3,191.30
TECCHIO, CAROL A & PARISI, MELODY
Prop Addr: 425 WISCONSIN AVE 66436 HOLTON (O.T.), LOTS 53 & 55 WISCONSIN AVE SECTION 03 TOWNSHIP 07 RANGE 15E 1,555.19
WHEELER, KENT M
Prop Addr: 432 COLORADO AVE 66436 FAIRCHILD'S SUB., LOT 6 SECTION 09 TOWNSHIP 07 RANGE 15E 662.69
WHEELER, KENT M
Prop Addr: 303 KANSAS AVE 66436 KELSO'S ADDITION, LOT 27 KANSAS AVE SECTION 09 TOWNSHIP 07 RANGE 15E 505.92
WINGENDER, PHILLIP J; TR
Prop Addr: 517 VERMONT AVE 66436 HOLTON (O.T.), LOT 65 VERMONT AVE SECTION 03 TOWNSHIP 07 RANGE 15E 1,450.45
WINGENDER, PHILLIP J; TR
Prop Addr: 431 HILLCREST DR 66436 ROSSER ADDITION, W62 LOT 1 BLK 3 & BEG SW/C LOT 1 N100 W18 S100 E18 TO POB 1,568.43
WOLF, CHRISTINA; MARTIN, DARRIN
Prop Addr: 325 VERMONT AVE 66436 HOLTON (O.T.), LOT 41 VERMONT AVE SECTION 10 TOWNSHIP 07 RANGE 15E 1,129.87
WOLTJE, JASON D & MELANIE R
Prop Addr: 417 COLORADO AVE 66436 S04, T07, R15E, BEG 360S SW INTERSEC COLORADO AVE & FIFTH ST W160 S60 E60 S5 1,340.17

HOYT
ANNO, RICKY L & KIMBERLY K
Prop Addr: 200 E FOURTH ST 66440 S23, T09, R15E, BEG 50E SE/C LOT 36 CENTRAL AVE N160 E158 S160 W160 TO POB 483.88
BAILEY, KENNETH F & CINDIE LEE
Prop Addr: 113 E FOURTH ST 66440 HOYT (O.T.), E56.67 LOTS 40 & 42 HIGHLAND AVE SECTION 23 TOWNSHIP 09 6,994.32
BAILEY, KENNETH R
Prop Addr: FIFTH ST 66440 LONG'S 2ND ADD., LOTS 1 & 2 SECTION 23 TOWNSHIP 09 RANGE 15E 32.32
EVANS, CARA L
Prop Addr: 104 HIGHLAND AVE 66440 HOYT (O.T.), LOTS 6 & 8 HIGHLAND AVE SECTION 23 TOWNSHIP 09 RANGE 15E 1,195.20
EVANS, CARA L
Prop Addr: CENTRAL AVE 66440 HOYT (O.T.), LOTS 3 & 4 CENTRAL AVE & ADJOIN VAC CENTRAL AVE & 1/2 ABAN RR 202.29
HORVATH, PAUL
Prop Addr: 206 HIGHLAND AVE 66440 HOYT (O.T.), LOTS 22 & 24 HIGHLAND AVE SECTION 23 TOWNSHIP 09 RANGE 15E 1,268.56
LEWIS, GREGORY R
Prop Addr: 608 HIGHLAND AVE 66440 HOYT (O.T.), LOT 84 HIGHLAND AVE & BEG NW/C LOT 84 N37 E155 S37 W155 TO POB 188.10
LEWIS, GREGORY ROGER
Prop Addr: 606 HIGHLAND AVE 66440 HOYT (O.T.), LOTS 76,78,80 & 82 HIGHLAND AVE SECTION 23 TOWNSHIP 09 1,194.27

(continued to page 9)

(HOYT - continued from page 8)

SCHNACKER, TRACI R
Prop Addr: 113 W FOURTH ST 66440
MCKEAGE'S 2ND ADD., LOT 33 SECTION 23
TOWNSHIP 09 RANGE 15E 2,283.09

STEVENS, JANICE M; STEVENS, JOHN M;
Prop Addr: 402 ANNETTA AVE 66440
HOYT (O.T.), LOTS 76,77,78 & S12 LOT 75
ANNETTA AVE SECTION 23 TOWNSHIP 09 RANGE 281.25

STEVENS, JANICE M & JOHN M
Prop Addr: FOURTH ST 66440
HOYT (O.T.), LOTS 71,72,73,74 & S13 LOT
75 ANNETTA AVE SECTION 23 TOWNSHIP 09 226.07

THURMAN, LISA R E
Prop Addr: 409 MCKEAGE AVE 66440
HOYT (O.T.), N/2 LOTS 25,27,29,31,33 &
35 FIFTH AVE SECTION 23 TOWNSHIP 09 487.09

TRAPHAGEN, EDWARD & MILDRED IRENE
Prop Addr: 202 ANNETTA AVE 66440
S.B. LANDIS ADD., S23, T09, R15E, S/2
LOTS 5 & 7 THIRD ST & LOT 6 & N/2 LOT 8 23.10

MAYETTA
HITTLE, RANDY LYLE
Prop Addr: 201 E JONES ST 66509
LUNGER'S ADDITION, LOTS 26 & 28 JONES
ST SECTION 22 TOWNSHIP 08 RANGE 15E 660.10

KUONE, CLARENCE E
Prop Addr: 207 N FIRST ST 66509
R. WHALEN'S ADD., LOTS 3 & 5 FIRST ST
SECTION 22 TOWNSHIP 08 RANGE 15E 398.62

LUNDIN, JOHN R & PATSY S
Prop Addr: 212 E JAMES ST 66509
LUNGER'S ADDITION, LOTS 17,19 & 21
JAMES ST SECTION 22 TOWNSHIP 08 RANGE 900.67

MILLER, WILLIAM B & WENDY
Prop Addr: 221 E CLARK ST 66509
S22, T08, R15E, BEG 398N SE/C NE/4
W145.4 S87 E145.4 N87 TO POB LESS RD ROW 420.41

MILLER, WILLIAM BATTAILLE & WENDY JO
Prop Addr: 217 E CLARK ST 66509
S22, T08, R15E, BEG 398N & 145.3W
SE/C NE/4 W145.3 S174 E145.3 N174 TO POB 538.98

NELSON, CARL F JR; TR
Prop Addr: 218 E CLARK ST 66509
SHUMWAY'S ADD., LOT 3 CLARK ST SECTION
22 TOWNSHIP 08 RANGE 15E 291.90

NELSON, CARL F JR & NELSON, CAROL
Prop Addr: 124 E MAIN ST 66509
MAYETTA (O.T.), LOT 29 & W.5 LOT 31
MAIN ST SECTION 22 TOWNSHIP 08 RANGE 15 1,041.59

NELSON, CARL F JR; TR
Prop Addr: 128 E MAIN ST 66509
MAYETTA (O.T.), E29.5 LOT 31 MAIN ST
SECTION 22 TOWNSHIP 08 RANGE 15E 1,441.45

NELSON, CAROL J
Prop Addr: 121 E MAIN ST 66509
MAYETTA (O.T.), LOTS 24 & 26 MAIN ST
SECTION 22 TOWNSHIP 08 RANGE 15E 895.21

SHARP, LAURA Prop Addr: 205 N FIRST ST 66509
R. WHALEN'S ADD., LOT 1 FIRST ST &
STRIP OF LAND ADJOINING LOTS 5,7,9 JONES 879.94

NETAWAKA
BELL, ALVIN JR & SHIRLEY A
& WILLITS, RICHARD & DENISE
Prop Addr: 421 WHITE WAY ST 66516
NETAWAKA (O.T.), LOTS 6 & 7 BLK 3
SECTION 22 TOWNSHIP 05 RANGE 15E 538.86

D&S HOMES LLP
Prop Addr: 518 PARK ROW ST 66516
NETAWAKA (O.T.), W85 LOTS 1 & 2 BLK 6
SECTION 22 TOWNSHIP 05 RANGE 15E 971.12

EDWARDS, JEREMY L
Prop Addr: 415 CHURCH ST 66516
RAILROAD ADD.(NETAWAKA), LOTS 4,5 & N/2
LOT 3 BLK 19 SECTION 22 TOWNSHIP 05 581.59

EDWARDS, LOREN & ROBYN
Prop Addr: 425 CHURCH ST 66516
RAILROAD ADD.(NETAWAKA), LOTS 6 & 7 BLK
19 SECTION 22 TOWNSHIP 05 RANGE 15E 472.79

EICHELBERGER, PATTY
Prop Addr: 516 SUPERIOR ST 66516
RAILROAD ADD.(NETAWAKA), S105 LOTS 1,2
& 3 BLK 8 SECTION 22 TOWNSHIP 05 RANGE 780.62

HOWLAND, JAMES E & CAROL J
Prop Addr: 405 KANSAS ST 66516
NETAWAKA (O.T.), LOTS 11,12,13 BLK 4
SECTION 22 TOWNSHIP 05 RANGE 15E 852.12

MORFITT, TED JR & BARB
Prop Addr: 310 SUPERIOR ST 66516
RAILROAD ADD.(NETAWAKA), LOTS 9 & 10
BLK 17 SECTION 22 TOWNSHIP 05 RANGE 15E 73.27

MORFITT, TED R JR & BARBARA A
Prop Addr: CHURCH ST 66516
NETAWAKA (O.T.), LOTS 11,12 & W12 OF
LOT 13 BLK 2 SECTION 22 TOWNSHIP 05 48.84

MORFITT, TED R JR & BARBARA
Prop Addr: DEANE ST 66516
NETAWAKA (O.T.), S22, T05, R15E, ACRES
3.8, BEG 228.08N SE/C NW/4 W619.5 N267 5.77

MULLINS, TRAVIS J
Prop Addr: 435 CHURCH ST 66516
RAILROAD ADD.(NETAWAKA), LOTS 8,9 & 10
BLK 19 SECTION 22 TOWNSHIP 05 RANGE 15E 523.71

RODRIGUEZ, PATRICIA D
Prop Addr: 414 COMMERCIAL ST 66516
NETAWAKA (O.T.), E26 LOT 16 & W20 LOT
17 BLK 7 SECTION 22 TOWNSHIP 05 RANGE 175.87

SMITH, CHARLES & ANGELA
Prop Addr: 430 MAIN ST 66516
RAILROAD ADD.(NETAWAKA), LOT 6 & W66
LOT 7 BLK 14 SECTION 22 TOWNSHIP 05 318.62

SOLDIER
ACKERET, JAMES (DECEASED)
Prop Addr: JACKSON ST 66540
SOLDIER (O.T.), LOTS 15,16 & 17 BLK 2
SECTION 09 TOWNSHIP 06 RANGE 13E 28.51

BOWMAN, BARBARA J
Prop Addr: 220 FRIEND ST 66540
JOHNSON'S ADDITION, LOTS 7 THRU 10 BLK
1 SECTION 09 TOWNSHIP 06 RANGE 13E 404.40

BURCH, JACK K; BEAMAN, CAROL L
C/O KEATING, DAKOTA
Prop Addr: 221 THOMPSON ST 66540
SOLDIER (O.T.), S09, T06, R13E, LOTS 3
THRU 5 BLK 2 SECTION 09 TOWNSHIP 06 495.73

KEATING, DAVID & PAULA
Prop Addr: 233 THOMPSON ST 66540
SOLDIER (O.T.), LOTS 7 & 8 BLK 2
SECTION 09 TOWNSHIP 06 RANGE 13E 349.21

KEATING, PAULA G & DAVID B
Prop Addr: THOMPSON ST 66540
SOLDIER (O.T.), S09, T06, R13E, LOTS 6
BLK 2 SECTION 09 TOWNSHIP 06 RANGE 13E 45.57

KEIFER, KURT G
Prop Addr: 327 FRIEND ST 66540
LOGAN & FRIEND'S ADD., S09, T06, R13E,
N/2 LOT 3 BLK 3 LESS RD ROW SECTION 09 215.30

MILLER, KENT S
Prop Addr: 601 SECOND ST 66540
JOHNSON'S ADDITION, LOTS 1 THRU 6 BLK 1
SECTION 09 TOWNSHIP 06 RANGE 13E 381.12

SHOCKEY, WILLIAM C
Prop Addr: 127 FRANCIS ST 66540
FRANCIS' ADDITION, LOT 11 & E1.5 LOT 12
BLK 6 SECTION 16 TOWNSHIP 06 RANGE 13E 603.50

SHOCKEY, WILLIAM C
Prop Addr: SECOND ST 66540
FRANCIS' ADDITION, W48.5 LOT 12 BLK 6
SECTION 16 TOWNSHIP 06 RANGE 13E 44.43

WATKINS, RICHARD D, SR & SHIRLEY
Prop Addr: 424 THIRD ST 66540
LOGAN & FRIEND'S ADD., LOTS 14,15 & 16
BLK 1 SECTION 09 TOWNSHIP 06 RANGE 13E 51.15

WILHELM, GERALD L; WILHELM, BRANDI
Prop Addr: FIRST ST 66540
SOLDIER (O.T.), N36 S66 LOTS 1,2 & 3
BLK 4 SECTION 16 TOWNSHIP 06 RANGE 13E 12.88

WHITING
ARCHER, RICHARD & BARBARA
Prop Addr: 824 FIFTH ST 66552
WHITING (O.T.), ACRES 11.8, BEG 300E
NW/C BLK C S372 E165 S264 E680 N636 W84 1,305.05

AYLESWORTH, JUNE A
Prop Addr: 505 SECOND ST 66552
WHITING (O.T.), LOTS 17 & 18 BLK 28
SECTION 27 TOWNSHIP 05 RANGE 16E 1,210.19

BELLINGHAUSEN, DALE J
Prop Addr: 535 SEARLE ST 66552
WHITING (O.T.), ACRES 8.2, BEG NE/C
BLK E W430 SW700 TO N LI OF FIFTH ST E 1,229.13

HENSLEE, RON E & DEBBIE M
Prop Addr: 212 SEARLE ST 66552
WHITING (O.T.), LOT 14 & S5 LOT 15 BLK
20 SECTION 27 TOWNSHIP 05 RANGE 16E 1,149.56

HIGGINS, ALAN W; BRUINGTON, HAL & MARY
C/O DUNN, TINA Prop Addr: SEARLE ST 66552
WHITING (O.T.), E/2 LOTS 1 & 2 BLK 30
SECTION 27 TOWNSHIP 05 RANGE 16E 87.70

LUDLOW, PAUL & JAIME
Prop Addr: 415 WHITING ST 66552
WHITING (O.T.), LOTS 6 THRU 9 BLK 4
SECTION 27 TOWNSHIP 05 RANGE 16E 1,194.21

MARTIN, EVA D C/O KLEPPIN, DOLLY R
Prop Addr: 426 WHITING ST 66552
WHITING (O.T.), LOTS 15 & 16 BLK 3
SECTION 27 TOWNSHIP 05 RANGE 16E 1,097.28

OLBERDING, ROBERTA C
Prop Addr: 325 SEARLE ST 66552
WHITING (O.T.), LOT 6 & N15 LOT 7 BLK 8
SECTION 27 TOWNSHIP 05 RANGE 16E 233.16

PROFFITT, TROY Prop Addr: SEARLE ST 66552
WHITING (O.T.), LOT 8 BLK 19 SECTION 27
TOWNSHIP 05 RANGE 16E 20.05

SNARELY, RICHARD A & MELITA A;
& PROFFITT, TROY & TONYA
Prop Addr: 301 SECOND ST 66552
S27, T05, R16E, BEG 275W NE/C BLK R
W128 S225 E128 N225 TO POB 872.88

TRAXLER, RICHARD D & JENNIFER L
Prop Addr: POMEROY ST 66552
WHITING (O.T.), S27, T05, R16E, ACRES
0.31, LOTS 10 & 11 BLK 11 SECTION 27 .95

TRAXLER, RICHARD D & JENNIFER L
Prop Addr: 310 PRATT ST 66552
WHITING (O.T.), S27, T05, R16E, LOTS 20
& 21 BLK 11 SECTION 27 TOWNSHIP 05 RANGE 785.83

VALENZUELA, CHRIS
Prop Addr: 312 THIRD ST 66552
WHITING (O.T.), ACRES 0.5, BEG SW/C
BLK 34 N238 E97 S216 W118 TO POB SECTION 148.35

WILLIAMS, TODD E; WILLIAMS, DALE C
Prop Addr: 108 WHITING ST 66552
WHITING (O.T.), LOTS 8 & 9 BLK 26
SECTION 27 TOWNSHIP 05 RANGE 16E 290.04

ADRIAN
HLADKY, SHAWN Prop Addr: 178TH RD 66422
S12, T08, R12E, ACRES 77.8, N/2 SW/4
LESS RD ROW 541.34

HLADKY, SHAWN Prop Addr: 178TH RD 66422
S12, T08, R12E, ACRES 77.79, W/2 SE/4
LESS BEG W1317.55 NE/C SE/4 S2650.29 254.32

HLADKY, SHAWN Prop Addr: 178TH RD 66422
S12, T08, R12E, ACRES 39.0, SW/4
NE/4 LESS RD ROW 179.47

HLADKY, SHAWN Prop Addr: 166TH RD 66422
S13, T08, R12E, ACRES 75.3, S/2 SW/4
LESS BEG 1209.2E SW/C SW/4 E336.7 1,078.12

HLADKY, SHAWN Prop Addr: 166TH RD 66422
S24, T08, R12E, ACRES 72.8, N/2 NW/4
LESS RD ROW & LESS N242 OF W180 & LESS 1,295.17

JONES, ROBERT H & BEVERLY C
Prop Addr: 166TH RD 66422
S13, T08, R12E, ACRES 2.5, BEG
1209.2E SW/C SW/4 E336.07 N403.76 58.27

JONES, ROBERT H & BEVERLY C
Prop Addr: 235 166TH RD 66422
S24, T08, R12E, ACRES 4.5, BEG
1209.2E NW/C NW/4 S480.15 E481.06 246.14

MULANAX, GARY D Prop Addr: 158TH RD 66418
S27, T08, R13E, ACRES 39.8, E/2 NW/4
NE/4 & E/2 SW/4 NE/4 LESS RD ROW 112.19

BANNER
EDWARDS, DENNIS J Prop Addr: M RD 66436
S01, T07, R14E, ACRES 4.8, BEG SW/C
SW/4 N1597.16 TO POB N344 E633 S344 W633 191.62

MOORE, CLIFFORD C C/O MOORE, TEDDY
Prop Addr: 222ND RD 66436
S15, T07, R14E, ACRES 10.7, BEG 259W
NE/C NW/4 NE/4 W1065.5 S531.6 E974 NE550 15.67

CEDAR
BOSTER, AMY M Prop Addr: 16660 R RD 66509
BROME VALLEY SUBDIVISION, ACRES 4.8,
LOT 3 SECTION 14 TOWNSHIP 08 RANGE 15E 933.73

BRILL, LARRY E
Prop Addr: 17314 158TH RD 66440
S21, T08, R16E, ACRES 20.3, W/2 E/2 W/2
SE/4 LESS RD ROW 270.77

COLLINS, CONNIE A
Prop Addr: 16345 W RD 66419
S21, T08, R16E, ACRES 79.4, S/2 NE/4
LESS RD ROW 1,746.53

DAVIDSON, DELBERT & RHONDA
Prop Addr: 15596 W RD 66440
S27, T08, R16E, ACRES 38.5, SW/4
NW/4 LESS RD ROW 1,389.45

DAVIDSON, DELBERT & RHONDA
Prop Addr: W RD 66440
S27, T08, R16E, ACRES 19.0, BEG NW/C
SW/4 W330 E400 TO C/L S CEDAR CRK ALONG 217.92

KLOBNAK, RONALD J
Prop Addr: 14275 166TH RD 66509
S23, T08, R15E, ACRES 8.9, BEG
989.86W NE/C NE/4 S876.62 E493.03 1,148.68

KLOBNAK, RONALD J
Prop Addr: 166TH RD 66509
S23, T08, R15E, ACRES 10.6, BEG
989.86W NE/C NE/4 S1316.07 W330.88 16.28

KLOBNAK, RONALD J
Prop Addr: S RD 66509
S23, T08, R15E, ACRES 9.1, BEG NE/C
NE/4 W497.94 S875.41 E497.94 N874.19 TO 14.57

LEMKE, JASON P
Prop Addr: 15244 158TH RD 66509
S19, T08, R16E, ACRES 6.12, S/2 SW/4
LESS BEG 619.3N SW/C SW/4 E348.48 N250 1,228.48

MANSON, TIMOTHY L; CARLISLE, DANNA V
Prop Addr: 15288 154TH RD 66509
S30, T08, R16E, ACRES 6.0, BEG 1320S
NW/C NW/4 S445.5 E660 N445.5 W660 TO PO 1,311.79

MARTIN, KRIS E & MISTY L
Prop Addr: 158TH RD 66440
S27, T08, R16E, ACRES 20.9, E/2 NW/4
NW/4 LESS RD ROW 36.50

MARTIN, KRIS E & MISTY L
Prop Addr: 15698 W RD 66440
S27, T08, R16E, ACRES 8.9, SW/4 NW/4
NW/4 LESS RD ROW 119.85

NELSON, CAROL J Prop Addr: 182ND RD 66509
S03, T08, R15E, ACRES 78.8, E74.25
AC SW/4 LESS RD ROW 307.05

NELSON, CAROL J
Prop Addr: ROCK ISLAND RD 66509
ROCK ISLAND PLACE, S26, T08, R15E, ACRES
0.53, N/2 LOT 7 SECTION 26 TOWNSHIP 08 90.14

NELSON, CAROL J
Prop Addr: ROCK ISLAND RD 66509
ROCK ISLAND PLACE, S26, T08, R15E, ACRES
0.2, N/2 LOT 7 SECTION 26 TOWNSHIP 08 21.68

POTTS, RICHARD WILL & ESTHER MARIE
Prop Addr: R4 RD 66509
S11, T08, R15E, ACRES 8.6, BEG NW/C
NE/4 S662.08 TO POB E1343.8 S282.83 29.64

PURDY, THEODORE J II & TINA K
Prop Addr: 16295 Q6 RD 66509
S22, T08, R15E, ACRES 2.8, BEG
566.2N & 20W SE/C W/2 NE/4 N150 W820.35 783.62

ROEDIGER, LESLIE W
Prop Addr: 15823 R RD 66509
S22, T08, R15E, BEG 280W & 50N SE/C
SE/4 N480 SE550 SW47.1 W208.4 TO POB 224.67

SCOFIELD, DAVID L & CONNIE L
Prop Addr: 13543 190TH RD 66509
S03, T08, R15E, ACRES 16.7, BEG NE/C
W530 S1348.7 E542 S1354.95 TO POB LESS 1,446.42

SMITH, STEVEN
Prop Addr: 16455 166TH RD 66509
S20, T08, R16E, ACRES 6.88, BEG 2121.06W
NE/C NE/4 S881.24 W349.02 N881.21 1,601.86

SMITH, WALTER R & JULIE A
Prop Addr: 16325 R RD 66509
S22, T08, R15E, BEG 802N SE/C NE/4
N208.7 W208.7 S208.7 E208.7 TO POB LESS 1,544.69

STOVALL, SHANNON Prop Addr: 17975 W RD 66509
S09, T08, R16E, ACRES 7.5, BEG NE/C
SE/4 NE/4 S264 W1320 N264 E1320 TO POB 248.89

THOMPSON, ADRIENNE & WILLIAM
Prop Addr: 16360 Q6 RD 66509
S22, T08, R15E, ACRES 1.0, BEG 1022N
& 20E SW/C SE/4 NE/4 E265.21 N164 233.23

WATHEN, KERRY S JR & PAULA L
Prop Addr: 13737 162ND RD 66509
S23, T08, R15E, ACRES 11.5, BEG 628E
NW/C SW/4 S956 E552 N956 W552 TO POB 1,297.38

WHEELER, FREIDA G
Prop Addr: 16615 S RD 66509
S14, T08, R15E, ACRES 4.5, S/2 SE/4
SE/4 SE/4 LESS RD ROW 445.12

WOHLER, CRAIG M
Prop Addr: 15554 178TH RD 66509
S07, T08, R16E, ACRES 32.28, COMM W/C
E1307.87 TO POB N363.02 N995.49 E704.51 3,114.33

WYATT, JAMES Prop Addr: 17175 S RD 66509
S14, T08, R15E, ACRES 1.4, BEG NE/C
SE/4 W313.07 S208.71 E313.07 N208.17 TO 338.80

DOUGLAS
BAILEY, JAMES M & TINA M
Prop Addr: 15112 142ND RD 66509
S36, T08, R15E, ACRES 20.0, BEG SE/C
SE/4 N439.4 W683 N494.6 W644.5 S939.55 3,300.13

COCHRAN, CLARENCE D
Prop Addr: 10762 T RD 66440
S30, T09, R16E, ACRES 2.4, BEG 165S
NW/C S/2 NW/4 E660 S165 W660 N165 TO PO 1,376.05

CUMMINGS SR, MARVIN H
Prop Addr: 13027 134TH RD 66440
S10, T09, R15E, ACRES 3.41, BEG NE/C OF
NW/4 W647 TO POB S25798 W637.62 N258.15 1,522.53

CUMMINGS, NICHOLAS & JACKIE
Prop Addr: V RD 66512
S02, T09, R16E, ACRES 34.0, BEG SE/C
SE/4 W373.3 N467.8 W241.1 N TO N LINE 57.70

DUGAN, DAVID L & CHERYL L
Prop Addr: 9410 T4 RD 66440
S31, T09, R16E, ACRES 2.6, BEG 255E
SW/C SE/4 N512.47 W255 S512.47 E255 TO 2,835.60

ENSLEY, KENT T & MICHELLE
Prop Addr: 10225 T4 RD 66440
S30, T09, R16E, ACRES 3.0, BEG SE/C
SW/4 N183 W155 SW627 S145 E782 TO POB 1,739.62

(Continued from page 9)

FILBERT, MELINDA JANE & AARON DAVID
Prop Addr: 10927 US-75 HWY 66440
S27, T09, R15E, ACRES 3.2, BEG 490S
& 81.7W NE/C NE/4 W351.3 N402.5 E311.8
1,130.88

FUQUA, JACK M & BETTY J; TR
Prop Addr: 142ND RD 66509
S02, T09, R15E, ACRES 4.98, COM NW/C
NE/4 E964.03 BEG S29 SW353.62 SW391.05
96.29

GRAY, STEVEN MELVILLE
Prop Addr: 17399 126TH RD 66440
S16, T09, R16E, ACRES 5.4, BEG 1980W
NE/C NE/4 E705 S410 NW710 N240 TO POB
478.98

GREENWOOD, DELIA A & JACKSON, ANGELA M
Prop Addr: 14775 US-75 HWY 66509
S34, T08, R15E, ACRES 4.2, N/2 S/2
NE/4 LESS W33 AC LESS RD ROW & LESS BEG
502.05

GUDENKAUF, AMY & JARED; MEACHAM, DENNIS
Prop Addr: X RD 66512
S26, T09, R16E, ACRES 10.9, S10.33 AC OF
N/2 W/2 SW/4 LYING EAST OF PUBLIC RD
40.51

HEIDEMAN, MARK J Prop Addr: 10477 Y RD 66512
S26, T09, R16E, ACRES 4.8, BEG SE/C
NE/4 SE/4 W580.8 N375 E580.8 S375 TO PO
1,008.79

HILL, LOREN G
Prop Addr: 13314 134TH RD 66440
S03, T09, R15E, ACRES 4.8, BEG 1996W
SE/C SE/4 N521.775 E417.42 S521.775
654.18

HOLTHAUS, STEVEN E & CONNIE S
Prop Addr: U RD 66509
S31, T08, R16E, ACRES 10.4, N/2 NE/4
LESS RD ROW & LESS BEG NE/C NE/4 W311
216.48

HOLTHAUS, STEVEN E & CONNIE S
Prop Addr: U RD 66509
S31, T08, R16E, ACRES 58.4, BEG NW/C
NE/4 E1860 SW807.68 E669.83 S33.52
1,117.96

HOLTHAUS, STEVEN E & CONNIE S
Prop Addr: U RD 66509
S31, T08, R16E, ACRES 73.0, S/2 NE/4
LESS RD ROW LESS BEG SE/C NE/4 2660
1,351.82

HRENCHIR, EDWARD L
Prop Addr: 10388 S RD 66440
HRENCHIR 1ST ADD., ACRES 10.0, N/2 N/2
SW/4 AKA TRACT NO 6 SECTION 25 TOWNSHIP
773.97

HRENCHIR, EDWARD L & HILDA T
Prop Addr: 9779 S RD 66440
S35, T09, R15E, ACRES 39.73, NE/4 SE/4
LESS RD ROW
888.60

HUMES, CAROL J & DAVID E
Prop Addr: 9695 T RD 66440
S36, T09, R15E, ACRES 20.1, N/2 S/2
N/2 SE/4 LESS RD ROW
1,552.37

KNIGHT, VALERIE
Prop Addr: 15668 SE INDIAN VALLEY LN 66440
S30, T09, R16E, ACRES 2.7, BEG 1289N
& 440E SW/C NE/4 N530 NW182 E70 SE250 TO
773.48

MASSEY, TONI L Prop Addr: T4 RD 66440
S30, T09, R16E, ACRES 6.4, S330 OF
E1320 SW/4 LESS BEG SE/C SW/4 N183 W155
20.30

MASSEY, TONI L Prop Addr: 10237 T4 RD 66440
S31, T09, R16E, ACRES 31.9, BEG 725W
NE/C NW/4 W825 S660 W166 S660 E1363 N37
1,473.15

MCCLURG, MARJORIE A, JOHN MICHAEL,
Prop Addr: Y RD 66512
S35, T09, R16E, ACRES 36.3, NE/4
NE/4 LESS BEG S332 NE/C NW/4 S200 W660
234.28

MCCOLLUM, MACKS W & ALICIA
Prop Addr: 16670 98TH RD 66440
S32, T09, R16E, ACRES 19.9, BEG
1014.84W SE/C NE/4 W338.28 N263.47 W248
1,355.14

NELSON, CARL F JR; TR
Prop Addr: 14351 S RD 66509
S35, T08, R15E, ACRES 78.3, E/2 SE/4
LESS BEG SW/C E/2 SE/4 E108 N300 W108
2,611.43

NELSON, CARL F JR; TR
Prop Addr: S RD 66509
S36, T08, R15E, ACRES 78.2, W/2 SW/4
LESS RD ROW
246.91

NELSON, CAROL J
Prop Addr: 126TH RD 66440
S13, T09, R15E, ACRES 71.14, W/2 NE/4
LESS RD ROW LESS BEG AT NE/C OF W/2 OF
346.77

NEUNER, BENNY J
Prop Addr: 11014 T RD 66440
S19, T09, R16E, ACRES 3.4, BEG SW/C
SW/4 N325 E536 S325 W536 TO POB LESS RD
885.61

POORT, MARK A
Prop Addr: 17435 126TH RD 66440
S16, T09, R16E, ACRES 4.9, BEG 45E
NW/C NE/4 NE/4 E219 SE514 S120 W440 N60
1,038.07

REECE, PHYLLIS KAY
Prop Addr: 14655 U RD 66509
S31, T08, R16E, ACRES 8.5, BEG SE/C
NE/4 W660 NE478.46 E45 NE249.99 SE456.4
2,109.40

RIBELIN, BRYAN N
Prop Addr: 13855 142ND RD 66509
S02, T09, R15E, ACRES 66.64, E/2 NW/4
LESS RD ROW & LESS BEG NE/C E/2 NW/4
1,645.14

RODMAN, DOROTHY H
Prop Addr: 10473 U4 RD 66440
S29, T09, R16E, ACRES 5.6, BEG
211.6S NE/C N23 AC OF S75 AC E/2 SW/4
577.43

ROGERS, JOYCE & JOHN; SACKRIDER, ROLAND
Prop Addr: 9989 S RD 66440
S35, T09, R15E, ACRES 2.6, BEG 1240N
SE/C SE/4 W400 S250 W234.99 N343 E634.99
820.07

ROSEVELT, ROBERT W
Prop Addr: US-75 HWY 66440
S14, T09, R15E, ACRES 8.2, BEG
1320.64S & 294E NW/C SW/4 E1120 N330.37
28.11

SCHROEDER, LOYD D
Prop Addr: 11646 US-75 HWY 66440
S23, T09, R15E, ACRES 5.6, BEG
1313.11S & 308.5E NW/C NW/4 N114.13
2,515.85

SCHWEIGEN, HARDIE M JR & JANICE S
Prop Addr: 10195 S RD 66440
S35, T09, R15E, ACRES 5.3, BEG NE/C
NE/4 W316.8 S825 E316.8 N825 TO POB LESS
362.78

SHAW, ROBERT JOHN
Prop Addr: 11090 P4 RD 66440
NORTH TOPEKA BABY FARMS, ACRES 5.9,
FARM 10D LESS RD ROW SECTION 21 TOWNSHIP
657.93

STREETER, BETTY
Prop Addr: 15601 142ND RD 66509
S06, T09, R16E, ACRES 4.7, BEG NW/C
NE/4 E485 S449.07 W485 N449.07 TO POB
440.80

STUMBAUGH, ROBIN R & RALPH W IV
Prop Addr: 12658 S RD 66440
S12, T09, R15E, ACRES 14.6, BEG 290N
SW/C SW/4 E648.4 N1020.44 W648 S1020 TO
1,774.08

THOMASSON, MARY; BROWN, JON E C
Prop Addr: 9915 T4 RD 66440
S31, T09, R16E, ACRES 4.8, BEG 432N
SE/C NW/4 N408 W534 S408 E534 TO POB
1,377.84

WEDDLE, PAXTON
Prop Addr: 14700 126TH RD 66440
S12, T09, R15E, ACRES 2.9, BEG SE/C
SW/4 W210 N623 E210 S623 TO POB LESS RD
456.73

WHEELER, GARRY LEE & JOAN ELAINE
Prop Addr: 16257 105TH LN 66440
S29, T09, R16E, ACRES 10.1, BEG NW/C
N23 AC OF S75 AC E/2 SW/4 S759.9 E570
1,044.85

FRANKLIN
ADCOCK, CHADWICK T & MARCIE L
Prop Addr: 11710 234TH LN 66436
DEER RUN SUBDIVISION, ACRES 3.4, LOT 4
SECTION 05 TOWNSHIP 07 RANGE 15E
3,083.60

ALLEN, STEVEN D & ALETA K
Prop Addr: 20902 P RD 66436
S21, T07, R15E, ACRES 9.9, BEG NW/C
SW/4 S350 TO POB E1325 S350 W1325 N350
2,154.33

BICKFORD, MICHAEL F & MILLIE C
Prop Addr: 22250 P RD 66436
S09, T07, R15E, ACRES 2.8, BEG SW/C
SW/4 N360 E348.7 S171.73 E27.33 S188.4
1,583.75

BROCKMAN, BARBARA A
Prop Addr: 23121 O RD 66436
S06, T07, R15E, ACRES 0.9, BEG 775N
SE/C E/2 SE/4 W210 N200 E210 S200 TO PO
1,068.17

LADUSCH, LLOYD G
Prop Addr: 21469 S4 RD 66436
S13, T07, R15E, ACRES 0.8, BEG 400N
SE/C SW/4 W200 N200 E200 S200 TO POB
264.15

MARTIN, KYLE J
Prop Addr: 15096 198TH RD 66509
S25, T07, R15E, ACRES 37.0, SE/4
SE/4 LESS BEG NE/C SE/4 SE/4 W440 SE480
1,371.18

MONTGOMERY, NOEL R & MEGAN L
Prop Addr: VERMONT AVE 66436
S10, T07, R15E, ACRES 8.3, BEG 785S
S ROW FIRST ST ON EXTENDED C/L NEW
30.05

MOORE, CLIFFORD C C/O MOORE, TEDDY
Prop Addr: 516 E EIGHTH ST 66436
S03, T07, R15E, BEG 109.5N NW/C LOT
39 MINNESOTA AVE NE890 TO C/L ABAN RR
19.82

MORRIS, BRETT S & KATRINA L
Prop Addr: R4 RD 66436
S23, T07, R15E, ACRES 51.85, NE/4 LESS
BEG 251W NE/C NE/4 S33 SW483.21 S196.97
1,430.83

MORRIS, BRETT S & KATRINA L
Prop Addr: 206TH RD 66436
S26, T07, R15E, ACRES 97.5, N/2 NW/4
& N/2 S/2 NW/4 LESS W660 OF N1320 & LES
634.60

SEARLES, JOHN CHRISTOPHER
Prop Addr: 15168 222ND RD 66436
S12, T07, R15E, ACRES 7.2, BEG SE/C
SE/4 N432 W784.87 S432 E784.87 LESS ROW
975.53

WRAY, MICHAEL L
Prop Addr: 13606 222ND RD 66436
S11, T07, R15E, ACRES 12.54, BEG SW/C
E418 N1318.04 W441.00 S1318.04 TO POB
864.81

GARFIELD
ALFORD, BRADLEY SCOTT
Prop Addr: 19477 V6 RD 66419
S33, T07, R16E, ACRES 19.7, BEG 660E
& 1320N SW/C NE/4 S811.8 E1072.5 N791.8
481.57

BAUMANN, TERRE R & TERRI L
Prop Addr: 19927 K-116 HWY 66436
S12, T07, R16E, BEG 386W & 50S NE/C
NE/4 S100 W120 S16 W177 N116 E297 TO POB
286.72

CRANE, MARJORIE % GLEN CUCHY
Prop Addr: 19934 K-116 HWY 66436
S01, T07, R16E, BEG 386W SE/C SE/4
W128 N150 E128 S150 TO POB LESS RD ROW
561.95

EVERHART, MICHELLE B; EVERHART, GARY L
Prop Addr: 19920 X RD 66436
S26, T07, R16E, ACRES 7.9, BEG SW/C
SW/4 N882.6 E426 S882.6 W426 TO POB LESS
200.88

HARDS, VIVA MARIE & GARY
Prop Addr: 19575 W RD 66419
S33, T07, R16E, ACRES 7.1, BEG 610N
SE/C NE/4 N710 W466.12 S710 E466.12 TO
317.90

SCHEID, RUSSELL
Prop Addr: 15682 190TH RD 66509
S31, T07, R16E, ACRES 160.4, SE/4
LESS RD ROW
1,094.86

STEWART, RAGINA M
Prop Addr: 17255 198TH RD 66436
S33, T07, R16E, ACRES 25.6, BEG NW/C
NE/4 S1320 E871.74 N989.8 W46 N330.2
325.08

STEWART, RAGINA M
Prop Addr: 19727 V6 RD 66419
S33, T07, R16E, ACRES 21.7, BEG
819.82E NW/C NE/4 E906.76 S850.3 NW417.5
765.70

STEWART, RAGINA M
Prop Addr: K-16 HWY 66436
S33, T07, R16E, ACRES 1.9, BEG
343.33N SE/C NW/4 NW485.87 TO CRK NE ON
13.08

STEWART, RAGINA M
Prop Addr: 19599 V6 RD 66419
S33, T07, R16E, ACRES 4.2, BEG 1320S
& 1315E NW/C NE/4 E417.5 N469.7 W417.5
573.27

GRANT
NICOL, MITCHELL D
Prop Addr: 22837 E RD 66540
S09, T07, R13E, ACRES 75.8, N/2 NE/4
LESS RD ROW
1,568.33

NICOL, MITCHELL D
Prop Addr: 22631 E RD 66540
S09, T07, R13E, ACRES 78.7, S/2 NE/4
LESS RD ROW
200.44

OZOOKIE TRUST
Prop Addr: 222ND RD 66540
S09, T07, R13E, ACRES 156.9, SW/4
LESS RD ROW
691.03

JEFFERSON
CATTRELL, LINDA A
Prop Addr: 8561 254TH RD 66416
S27, T06, R14E, ACRES 18.95, LOT 2
CATTRELL ACRES SUB LESS RD ROW
840.55

MCASEY, WILLIAM J
Prop Addr: 8382 250TH RD 66416
S27, T06, R14E, ACRES 3.7, BEG SE/C
NW/4 N260 W670.15 S260 E670.15 TO POB
1,628.21

MCWILLIAMS, JEANETTE E
Prop Addr: 26747 K RD 66416
S15, T06, R14E, BEG 1036.92N SW/C
NW/4 E284.26 N919.44 W284.26 S919.44 TO
145.98

LIBERTY
CALKINS, LLOYD R
Prop Addr: 27784 Q4 RD 66436
S10, T06, R15E, ACRES 4.7, BEG 33E
NW/C NE/4 S607 E274.36 N346.5 W57.81
640.44

HYATT, EVERETT L
Prop Addr: 12379 244TH LN 66436
S33, T06, R15E, BEG 1373.3N & 24.04W
SE/C NW/4 N367.72 W362.67 S367.63
1,406.18

SPIKER, TERESA M % SCHEID, RUSSELL
Prop Addr: 24171 US-75 HWY 66436
S33, T06, R15E, BEG NE/C SW/4 W217.8
S300 E217.8 N300 TO POB
1,443.53

ZWONITZER PROPANE INC
Prop Addr: MEMORY LN 66436
S33, T06, R15E, ACRES 1.5, BEG
1702.82N & 492.58E SW/C E146.83 S445.01
395.45

LINCOLN
BAILEY, KENNETH F & CINDIE
Prop Addr: 9163 134TH RD 66509
S11, T09, R14E, ACRES 158.6, NW/4
LESS RD ROW
2,506.10

BAILEY, KENNETH F & CINDIE
Prop Addr: 134TH RD 66509
S11, T09, R14E, ACRES 78.16, N/2 NE/4
LESS RD ROW
248.45

BAILEY, KENNETH F & CYNTHIA L
Prop Addr: 126TH RD 66509
S12, T09, R14E, ACRES 77.6, S/2 SW/4
LESS RD ROW
226.94

COMMERCE BANK & TRUST % SCHNACKER, TRACI
Prop Addr: N RD 66509
S01, T08, R14E, ACRES 78.7, S/2 SE/4
LESS RD ROW
230.32

JOHNSON, DIANE M
Prop Addr: 14710 O RD 66509
S32, T08, R15E, ACRES 4.8, BEG 445.32N
SW/C NW/4 N196.69 E1156.21 S196.87
282.77

NELSON, VICKI
Prop Addr: 12440 142ND RD 66509
S33, T08, R15E, ACRES 3.6, BEG
234.19E SW/C SE/4 N660 E234.19 S660
336.57

ROGERS, VERNON & SUZETTE
Prop Addr: N RD 66509
S06, T09, R15E, ACRES 32.2, SW/4
NW/4 LESS RD ROW
155.61

ROGERS, VERNON & SUZETTE
Prop Addr: N RD 66509
S06, T09, R15E, ACRES 74.8, N/2 SW/4
LESS RD ROW
290.88

ROGERS, VERNON LEE & SUZETTE
Prop Addr: 12742 134TH RD 66440
S04, T09, R15E, ACRES 5.1, BEG 290W
SE/C SE/4 W310 N730 E310 S730 TO POB
2,549.46

ROGERS, VERNON LEE & SUZETTE
Prop Addr: Q RD 66440
S04, T09, R15E, ACRES 33.5, SE/4
SE/4 LESS BEG 290W SE/C SE/4 W310 N730
111.08

SCHIEVELBEIN, PATRICIA A
Prop Addr: 11875 O RD 66509
S18, T09, R15E, ACRES 39.1, SE/4
SE/4 LESS RD ROW
1,616.50

SECHRIST, BERT R
Prop Addr: O4 RD 66509
S05, T08, R15E, ACRES 40.8, NW/2
SE/4 (1/12 INTEREST)
12.21

SECHRIST, BERT R Prop Addr: H RD 66418
S01, T08, R13E, ACRES 77.7, E/2 SE/4
(1/12 INTEREST IN U.S.A. TRUST LAND)
20.95

SEYMOUR, SHIRLENE
Prop Addr: 9593 150TH RD 66509
S35, T08, R14E, ACRES 2.0, BEG NE/C
NE/4 W290.42 S340.03 E275.59 N345.15 TO
1,722.01

STARKS, RICHARD L
Prop Addr: 7593 124TH RD 66418
S16, T09, R14E, ACRES 10.0, BEG
3036.26W SE/C N/2 N/2 N649.63 SE460.11
393.14

THOMPSON, LAURA C & JIMMY S
Prop Addr: 17980 N RD 66509
S07, T08, R15E, ACRES 7.6, W535 FT
N/2 SW/4 NW/4 LESS RD ROW
1,580.72

WHITEMAN, STEPHEN G & LINDA
Prop Addr: 15074 M RD 66509
S25, T08, R14E, ACRES 38.3, SW/4
SW/4 LESS RD ROW
110.60

NETAWAKA
HERD, DARREL J
Prop Addr: 31830 N RD 66550
S07, T05, R15E, ACRES 5.5, BEG SW/C
SW/4 E537.5 N462.81 WLY537.18 S446.7 TO
719.47

PETERSEN, LONNIE R; KIDWELL, KIMBERLY K;
Prop Addr: 32481 R RD 66516
S10, T05, R15E, ACRES 1.2, BEG
581.96S NE/C NE/4 W280.66 SW81.87
396.60

SCHUMANN, BRADLEY D & CHASTITY
Prop Addr: 29498 R RD 66516
S26, T05, R15E, ACRES 3.9, BEG
1674.35S NW/C SW/4 E397.7 S461.66
2,220.43

SOLDIER
BOTTOM, LLOYD; BOTTOM, TONY L
Prop Addr: 280 246TH RD 66432
S25, T06, R12E, ACRES 4.12, BEG SW/C
SW/4 E1516.23 TO POB N354.51 E509.87
158.32

HUGHES, GEORGE L & MARYANN E
Prop Addr: A4 RD 66540
S01, T06, R12E, ACRES 5.9, BEG 528W
SE/C NW/4 N660 W396 S660 E396 TO POB
2.84

HUGHES, MARYANN Prop Addr: 286TH RD 66540
S01, T06, R12E, ACRES 26.4, BEG NE/C
NW/4 S903 W1320 N903 E1320 TO POB LESS
311.45

JONES, CRAIG DAVIS
Prop Addr: 27704 K-62 HWY 66540
S09, T06, R13E, ACRES 3.8, BEG 132W
NE/C NE/4 W264 S742.5 E264 NE742.5 TO
567.89

(continued on page 11)

Jackson County

MARKETPLACE

Reaching 22,800 Readers Each Week!

Classification:

- "Blind" ads, (those giving only the Recorder's post office box as the address for replies).
- Classified Display ads (those with borders or special typefaces).
- Antiques
- Auctions
- At Your Service
- Automobiles
- Trucks
- Motorcycles
- Recreational Vehicles
- Boats
- Business Opportunities
- Employment
- Feed & Seed
- Garage Sales
- Household Articles
- Livestock
- Miscellaneous
- Musical Instruments
- Poultry
- Rental Property
- Mobile Homes
- Farm Land/Homes
- Residential Property
- Commercial Property
- Lost & Found
- Pets
- Travel
- Wanted To Buy
- No Trespassing
- Public Notices
- Cards of Thanks
- Sporting Goods
- Heavy Equipment
- Farm Equipment
- Happiness Is...
- Personal

How to place an ad:

Call 785-364-3141, or come by the Recorder office, 109 W. 4th, Holton, Kan., from 8 a.m. to 5 p.m. Monday through Friday. Our deadlines are 5 p.m. on Friday for the Monday edition and 5 p.m. Tuesday for the Wednesday edition.
E-mail: holtonrecorder@giantcomm.net

Rates:

Holton Recorder "COMBO" Word Classified Advertising Rates are as follows:

10 words or less - 1 insertion \$3.50
10 words or less - 2 insertions \$5.50, save \$1.50
10 words or less - 3 insertions \$7.50, save \$3.00
10 words or less - 4 insertions \$9.50, save \$4.50
All word classifieds are printed in the Recorder, Shopper and online.
Blind ads add \$2 charge.
Regular classified display ads \$7.70 per column inch.
Combo classified display ads \$10.40 per column inch.

Check your Ad!

Please check your ad the first day it appears and report any errors immediately. We are responsible for only one incorrect publication. The Recorder will not be held responsible for damages resulting from any errors.

Billing Charge:

A \$1.50 billing charge will be added to Recorder Classified Word Ads not paid in advance of publication. The billing charge is to cover the expense of preparing and mailing the bills.

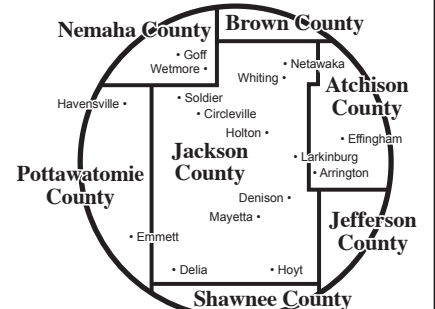
The Recorder reserves the right to edit, reject and classify all advertising at anytime. All advertising is subject to approval by the publisher.



785-364-3141
or fax 785-364-3422

We Cover The County And Beyond Each Week!

When you advertise in the Holton Recorder and the Jackson County Shopper you reach every household in the county and beyond.



Next time you advertise with a display ad, tell us to "combo" your ad!

At Your Service

Jim Childs Roofing
Free Estimates
28 Years Experience
Insured
Competitive Prices
Home 364-2451
Cell 364-6101

AAA MICK TREE SERVICE. Kansas Certified Arborist. Aerial equipped. Stump Removal. Insured. Free estimates. Holton, Kan., 785-383-6670.

CORN CRIB CATERING: We cater to large and small parties! 785-868-2460.

TREE TRIMMING & REMOVAL, aerial equipment, stump removal, free estimates, insured. Larrison Tree Service, 785-364-3743. Call anytime.

Special Notice

*ALCOHOL PROBLEM with family member or friend? Holton Al-ANON family group, Wednesdays, 7p.m., Evangel United Methodist Church, East door, go to Library, Rm.104.

*Hours at the JCMA New Hope Center Food Pantry, located at Fifth Street and Wisconsin Avenue in the Holton First Christian Church basement, are from 3 p.m. to 6 p.m. on Thursdays. For more information, call 362-7021.

NOTICE: The Holton Recorder is a local dealer for Superior Rubber Stamp and Seal Company of Wichita. Contact The Recorder for the following supplies: Pre-inked stamps, self-inking stamps, daters, markers, name tags, awards, wall signs, plaques. 364-3141, 109 W.4th St., holtonrecorder@giantcomm.net

*The Heart of Jackson Humane Society shelter is located at 414 E. Eighth St. in Holton and is open from 1 p.m. to 4 p.m. Monday through Saturday and at other times by appointment. For more information, call 364-5156.

Wanted

The Heart of Jackson Humane Society is seeking donations of several items for continued operations, as well as more volunteers to walk dogs at the shelter. For more information, call the shelter at 364-5156 or stop by the shelter at 414 E. Eighth St. in Holton.

Employment

McElroy's, Inc. is currently seeking a Service/Project Plumber for work in the Manhattan, Topeka, and Lawrence areas. This position installs, repairs, and maintains all plumbing systems, equipment, fixtures and piping. Knowledge in plumbing systems, code compliance, and excellent communication skills required. Pay commensurate with experience. Applicants are encouraged to apply in person at 3310 SW Topeka Blvd., Topeka, Kansas between 8am-4pm Monday-Friday or call 785-267-9046.

NEED SOMEONE to mow my yard with my mower as soon as possible. 785-305-0813.

NEK-CAP, Inc. is looking for quality staff to work in their Head Start centers. The following positions are now available: Assistant Teacher in Holton; Program Support Coordinator in Hiawatha or Horton; Child/Family Advocate in Pottawatomie County. Numerous benefits. Job descriptions/application can be seen on the web at www.nekcap.org.

KPA Classified Ads

Adoption ADOPT. Young, professional NYC couple will provide unconditional love and secure future for your baby. Expenses paid. Call or text CJ and Patrick 917-494-3043

Farm Equipment GOT LAND? Our Hunters will Pay Top \$\$\$ To hunt your land. Call for a Free info packet & Quote. 1-866-309-1507 www.BaseCampLeasing.com

For Sale 40' Grade A Steel Cargo Containers \$1650.00 in KC. \$1950.00 in Solomon Ks. 20s' 45s' 48s & 53s' also available Call 785 655 9430 or go online to Chuckhenry.com for pricing, availability & Freight estimates.

Help Wanted/Truck Driver Convoy Systems is hiring Class A drivers to run from Kansas City to the west coast. Home Weekly! Great Benefits! www.convoy.com Call Tina ext. 301 or Lori ext. 303 1-800-926-6869.

Misc. DONATE YOUR CAR TO CHARITY. Receive maximum value of write off for your taxes. Running or not! All conditions accepted. Free pickup. Call for details. 844-268-9386

Misc. LIVING WITH KNEE OR BACK PAIN? Medicare recipients may qualify to receive a pain relieving brace at little or no cost. Call now! 855-796-7301

Misc. Diagnosed with Mesothelioma or Asbestos Lung Cancer? If so, you and your family may be entitled to a substantial financial award. We can help you get cash quick! Call 24/7: 855-510-4274

Misc. OXYGEN - Anytime. Anywhere. No tanks to refill. No deliveries. The All-New Inogen One G4 is only 2.8 pounds! FAA approved! FREE info kit: 844-359-3973

Appliances

FOR-SALE: Coleman 5,000-watt generator, runs good, \$300, located in Holton. 319-350-3188.

Lawn & Garden

BULK 100% Decorative river rock. 785-851-0053.

Miscellaneous

NOTICE TO SUBSCRIBERS: If you change your address, please inform The Holton Recorder, along with the U.S. Post Office, so that you can avoid missing any editions of the paper. Contact us with your new address at: The Holton Recorder, P.O. Box 311, Holton, KS 66436; call 785-364-3141; or email holtonrecorder@giantcomm.net

NOTICE: Place your classified ad in The Holton Recorder and get it placed FREE online at www.holtonrecorder.net!

Want To Rent

Young farmer in search of pasture to rent. Will maintain fences and good steward of the land. Call 402-540-7733.

Rental Property

1-BEDROOM DOWNSTAIRS APARTMENT in Holton: Available now! Close to swimming pool. 785-364-6325.

1-BEDROOM APARTMENT/ Holton. Available Sept. 1st. No smokers/pets. \$390/rent. (785)935-2390.

1 - B E D R O O M APARTMENT: Furnished, deposit required, no pets. 785-364-4676/785-408-3261

FOR-RENT/SALE: 2-bedroom, 1-bathroom house, oversized garage, Circleville, \$575/month. 785-268-0118.

FOR-RENT: Shop/storage building, 3,200-sq.ft., business district, Mayetta. 785-845-4397, text/leave message.

PRIME OFFICE SPACE for-rent: 102 W.5th St./Holton. Contact 364-3302. Available Aug. 1.

KPA Classified Ads

Misc. SAVE YOUR HOME! Are you behind paying your MORTGAGE? Denied a Loan Modification? Is the bank threatening foreclosure? CALL Homeowner's Relief Line now for Help! 855-401-4513

Misc. Updating your bathroom does not have to be expensive or take weeks to complete. BathWraps makes it easy. Call 855-324-2317 today for a free in home consultation.

Misc. SWITCH TO DIRECTV. From \$50/Month, includes FREE Genie HD/DVR & 3 months HBO, SHOWTIME, CINEMAX, STARZ. Get a \$50 Gift Card. Call 888-683-1682 (Mon-Fri 8am-9pm CT)

Misc. FAST Internet! HughesNet Satellite Internet. High-Speed. Available Anywhere! Speeds to 25 mbps. Starting at \$49.99/mo. Call for Limited Time Price! 877-578-8005 (Mon-Fri 8am-8pm CT)

Misc. SAVE ON YOUR MEDICARE SUPPLEMENT! FREE QUOTES from top providers. Excellent coverage. Call for a no obligation quote to see how much you can save! 855-587-1299

Misc. Teach the award-winning AARP Smart Driver™ classroom curriculum. As a volunteer Instructor, you will: • Organize/teach courses in your community. • Free training-tools you need! <http://bit.ly/29CAffw>

Misc. VIAGRA and CIALIS USERS! There's a cheaper alternative than high drugstore prices! 50 Pills SPECIAL \$99.00 FREE Shipping! 100% guaranteed. CALL NOW! 855-850-3904

Employment

TRIM SAW OPERATOR

Hoyt Pallet Co., Inc. is seeking a Trim Saw Operator. No experience necessary. Apply in person. 11621 P4 Rd., Hoyt, KS 66440 (785-986-6785)

Rental Property

SOUTHVIEW APARTMENTS of Holton
2 & 3 BR Available.
Please call Donna (785) 364-5074.

UPSTAIRS APARTMENT: \$350/month plus deposit. 785-260-1923

VERY NICE, very rural, newly remodeled 1999 2-bedroom berm home with attached garage. Appliances included. USD-335. Long driveway shared by owner for access to cattle. Up to three horses allowed. NO PETS/SMOKING IN HOUSE. Outside dog allowed only on approval of owner. On gravel road, 11-miles northeast of Holton. \$900/rent plus deposit. 785-851-7227/7319.

Employment

POSITION ANNOUNCEMENT

SOIL CONSERVATION TECHNICIAN: Position involves work outdoors visiting landowners, traversing uneven terrain, evaluating conservation best management practices, designing practices, overseeing construction, checkout, and more. **QUALIFICATIONS:** High school diploma or GED. Requirements: background in conservation or agriculture (Two year degree with agriculture classes would substitute for background in conservation or agriculture), ability to communicate effectively and work well with people, valid Kansas state driver's license, and pass a security background investigation, as required by the U.S. Dept. of Agriculture. To obtain information on the application process contact Jackson County Conservation District, 307 Montana Ave., Holton, KS 66436, 785-364-3329, ext. 136 thru August 31, 2017. Salary \$33,686 plus benefits. EOE

Employment

Join us on our journey to culture change!
Eastridge Nursing Facility at Centralia has the following open positions:
CNA: Various shifts, improved staffing with decreased resident to CNA ratio 6-8:1!
RN: Full-time day shift available. Three twelve hour shifts a week and every third weekend. 5am to 5pm.
Environmental Services Tech: Full-time day shift available, 30 hours per week. Benefits eligible position
Competitive wages and benefits. Call Eastridge at Centralia 785-857-3388 for more details or apply online at www.chcsks.org.
A division of Community HealthCare System, Inc. EOE

Schenck Process

Sabetha, KS

If you wish to join a team of dedicated employees who take pride in the equipment they build and appropriate working in a custom fabrication environment, contact Schenck Process, a leading manufacturer of air filtration and pneumatic conveying equipment. We are currently seeking quality minded individuals for the following positions:

MIG & TIG Fitter/Welders

Welders may perform fitting, set-up, layout or welding of raw and formed metal products. Best fit candidates will possess experience grinding, welding, fitting or blueprint reading. Experience with stainless steel will be a plus.

Painter/Painter Prep

for the 1st & 2nd shifts. A Painter/Painter Prep ensures that parts & equipment are painted according to work orders, prepares equipment, mixes paints, & maintains a safe & orderly work environment.

Shipping Assembly

for the 1st & 2nd shifts. Best fit candidate will possess experience with exposure to shipping in manufacturing.

Experience in a manufacturing environment preferred for these roles.

For consideration, apply at:
Schenck Process LLC
810 S Old 75 Highway
Sabetha, KS 66534
Or e-mail resume to:
C.McElroy@schenckprocess.com

Schenck Process offers a full complement of benefits incl. medical/dental/vision plan, 401(k) retirement savings plan, paid leave and holidays, disability & life insurance, educational assistance, on-the-job training and more.

www.schenckprocess.com

An Equal Opportunity Employer.

Motorcycles

FOR-SALE: (1)1997 Suzuki Intruder 800, low miles; (1)1995 Honda Shadow 600, low miles, clean w/extras. \$1,800 each/\$3,000 for pair. Call Greg, 541-218-3880.



PRODUCTION POSITIONS



ADM-Crosswind is now accepting applications for various production positions at our Topeka, Hiawatha and Sabetha facilities. We offer an excellent benefit package as well as competitive wages.

Requirements for our open positions must include a High School Diploma or GED, prior experience in a manufacturing environment, basic computer skills, excellent verbal and written communications, strong safe and math aptitude, and the ability to lift and carry up to 50 lbs. on a regular basis.

ADM Animal Nutrition, Inc. is a wholly-owned subsidiary of Archer Daniels Midland Company and a leading producer of animal feeds and supplements serving the agricultural industry throughout the United States, Canada, Mexico and Puerto Rico.

ADM requires the successful completion of a pre-employment drug screen and a background check.

ADM is an EOE for minorities, females, protected veterans and individuals with a disability.
To apply go online to www.adm.com/careers

REGISTERED NURSE

Community HealthCare System (CHCS) is seeking a RN to join our team of professionals. RNs at CHCS enjoy many benefits of working at the state-of-the-art facility, however, the most enjoyable aspect is working with the system's outstanding medical staff. At CHCS, all care professionals work together for the common goal of providing the best outcome for our patients.

Community HealthCare System has a 6p-6a RN position at the Onaga Campus and a 6a-6p RN position at the St. Marys Campus.

For more information and to apply go to www.chcsks.org and click on "Careers" or contact Human Resources at 785-889-5026. EOE

HELP WANTED

Ag Partners Coop is now hiring for a full time grain elevator position at our Topeka location. Benefits offered are health insurance, 125 Plan, 401k and retirement. Applicant must pass physical test and drug screen. Please stop by any of our locations for an application or download an application from our website <http://www.agpartnerscoop.com> or contact Meryl Charles at 785-741-0526.

No Trespassing

TRESPASSING WITHOUT permission. Notice is hereby given by the undersigned residents of Jackson County that hunting, fishing, trapping, or shooting, or trespassing day or night is positively forbidden on all land owned, or rented or occupied by us, or on roads adjacent to lands at any time of the year, licenses or no licenses. April 1, 2017-2018. Phil and Colene Gutierrez, Roger Ackeret, Jay Gilliland, BFD Inc., Joseph B. Nick, Harold Knouft, and Joyce DeVader.

Crossword Answers





American comic genius Jerry Lewis dies at 91

The goofy comedies of Jerry Lewis (shown above), who died Sunday at the age of 91, made him the world's best-paid movie star.

A master of the visual gag, his films — with their cartoon-like antics — became immensely popular.

His partnership with Dean Martin lasted for 10 years, spawning a string of successful films and live performances. He also became well-known for hosting marathon telethons, raising millions of dollars for charity.

He was born Joseph Levitch in 1926 in Newark, N.J., into a family of Russian Jewish emigrants. His father was a vaudeville entertainer; his mother played piano at a radio station.

Following his stage debut at the age of five, he went on to play to great acclaim to audiences on the so-called Borscht Circuit, the collection of summer resorts in the Catskill Mountains that were popular with New York's Jewish families. By 15, he had refined an act that involved exaggerated miming to records under the name Joey Lewis, which he later changed to Jerry.

He first found national success when he teamed up with an up-and-coming crooner called Dean Martin. The pair quickly became favorites on the nightclub circuit before branching out with their own radio show.

Their combination of sophistication and slapstick brought a decade of success, during which they starred together in 16 films and became the number one box office success in America. But their partnership, which Lewis likened to a love affair, ended in acrimony. The two men did not speak to one another for years after the split, though they were reconciled before Martin's death.

Lewis went on to sign an exclusive contract with Paramount Pictures, which made him the best-paid star in Hollywood. He wrote, starred in, produced and even directed a series of comedy films including "The Bell Boy," "Cinderella" and "The Nutty Professor," which broke box office records everywhere they played.

Many of his roles were based on the idea of a split personality. Lewis' innate ability to play a wide range of admittedly gro-

tesque characters was always at the core of his films. To some, Lewis' performances were childish and simplistic. Others, including the French, who awarded him their highest decoration the Legion d'Honneur in 1984, considered him a genius.

Lewis took his comedy extremely seriously. Indeed, he taught for a time at the University of Southern California, where his students included George Lucas and Steven Spielberg. His analysis was refreshingly simple, that "there is a thin line between comedy and tragedy and real comedy comes through exploring that line."

Lewis endured a number of setbacks, including open heart surgery, prostate cancer and a bitter separation from one of his five sons.

In 1983, he thrilled as the talk show host stalked by Robert de Niro in "The King of Comedy" and, in 1995, played opposite the British actor and comedian, Lee Evans (whom many liken to Lewis) in the film "Funny Bones."

He returned in triumph to the stage in 1995 as the satanic Mr. Applegate in the musical "Damn Yankees." It was a role that, at the time, made him the highest-paid star in Broadway history.

When the Weinstein Company made a CGI animated version of "The Nutty Professor" in 2008, Lewis lent his voice to the character of Professor Kelp, the part he had played in the original 1963 film.

For more than 50 years, he worked for the American Muscular Dystrophy Association and fronted their annual coast-to-coast Labor Day telethon. It was a partnership that ended somewhat abruptly in 2010.

Behind the clowning, Lewis was a complex character, some would say eccentric. He would, for instance, give suits away rather than have them cleaned and, like many perfectionists, could be egotistical and difficult to work with.

But it is a measure of Jerry Lewis' many abilities to note that not only did he make it to the top during one of the most competitive eras in Hollywood history, he stayed there for half a century, still packing them in close to the end.

**Seneca Cellular
In Holton**
Will be closed as of August 31st

**30% Off
Accessories!**

We would like to thank our customers for the past 3 years!
Come visit us at our Seneca Store!

DEADLINES ...

Here's ours at The Holton Recorder:

For Monday's paper, Fridays at Noon.
For Wednesday's paper, Tuesdays at Noon.
Phone (785) 364-3141 for additional information.
Thank You.

Employment

The Kickapoo Tribe Gaming Commission is seeking a

SURVEILLANCE OFFICER

The Kickapoo Tribe Gaming Commission is seeking a full-time Surveillance Officer. This position is open until filled. We are a Drug-Free Work Place. Indian Preference will apply.

All applicants who are considered for employment must pass a drug screening & submit to an in-depth background investigation to obtain a Category 1 Gaming License. Applicants may apply at the KTCG office at: 888 Hwy. K-20, Horton, Kansas 66439 PH: (785) 486-3180

HELP WANTED: TIRE TECH POSITION

Full-time Tire Tech, 44 hours per week. Competitive hourly wage & weekly overtime. Health, life & disability insurance benefits. Experience in passenger & truck tires preferred. Must be able to pass DOT physical. Apply in person at:

Dillon Tire
2000 Skyway Hwy. 59, Atchison, KS 66002

SEEKING A SNAP-Ed PROGRAM ASSISTANT

K-State Research and Extension, Meadowlark Extension District #7, is accepting applications for a Nutrition Educator for the Supplemental Nutrition Assistance Program (SNAP-Ed) to provide nutrition education to elementary children, and parents of limited resource and diverse families in the Meadowlark Extension District.

The position is 40 hours per week with a minimum requirement of a bachelor's degree. Applicant must have a valid driver's license, proof of insurance and reliable transportation, and must be able to lift and transport educational materials. Work will be coordinated from your home office and travel is involved.

Current rate is \$23,884-\$35,826 per year plus benefits. Applications will be accepted until the position is filled.

For more information Contact, Cindy Williams or by email csw@ksu.edu Find a complete job description at: www.k-state.edu/hcs/jobs/openings.

Submit letter of application, resume and names and contact information for three professional references electronically to http://careers.k-state.edu. Requisition number is 501731.

KSU is an affirmative action/equal opportunity employer and encourages diversity among its employees. Background check is required.

ESTATE AUCTION
Saturday, Aug. 26, 2017 • 10:30 a.m.
1106 I Road, Centralia, KS 66415
LOCATION: From Centralia: 2 mi. east on Hwy. 9, 1 mi. south on I Road

Complete Woodworking Shop & Tools
Tractor, Boat, Yard & Garden Equipment
1995 Ford Explorer- Eddie Bauer Edition SUV, 141,000 miles, Auto., V-8, 4x4, very good vehicle
Household & Miscellaneous
Many boxes unopened at listing.

PATTI CRAFT, seller • Lunch & Amenities On Site

Auction conducted by:
BERGMAN AUCTION SERVICE
STEVE & SHERIL BERGMAN 785-336-3917 or 294-0932
For complete Bill of Sale & Pictures visit our Facebook page: Facebook.com/BergmanAuctionService

GREAT ADVENTURE TOURS
PO BOX 4126, TOPEKA, KS 66604

785-862-1080

THE VIRGINIA'S FALL FOLIAGE
October 15-28, 2017

A motor coach tour to the East Coast that features the beautiful fall foliage of Virginia, West Virginia, Kentucky and Washington DC. We spend 2 nights in Washington DC and 3 nights at a beach front hotel on Virginia Beach. Luggage handling for one suitcase. Please call for a free color brochure. Escorted from Topeka!

Christmas Mystery
December 1-3, 2017 3 days/2 nights

This tour features: Awesome attractions, wonderful food, and features Christmas at its best! Includes two Breakfasts, three Lunches, and one dinner, Deluxe Motor coach transportation luggage handling for one suitcase, escorted from Topeka, KS

Panama Canal Adventure
San Diego to Ft. Lauderdale March 4 - 20, 2018

The Panama Canal is a must-see destination. Dubbed "one of the seven wonders of the modern world" by the American Society of Civil Engineers, this 48-mile waterway divides two continents and connects two mighty oceans. On Holland America Line Panama Canal cruise board the Oosterdam. We fly from Kansas City to San Diego and back from Ft. Lauderdale! Escorted from Topeka! Call for a free color brochure!

THE HOLTON RECORDER
Serving the Jackson County community for 150 years

ESTABLISHED 1867

Published semi-weekly at 109 West Fourth Street, Holton, Jackson County, Kansas 66436. Periodical postage paid at Holton (Kan.) Post Office. phone: (785) 364-3141; fax: (785) 364-3422; e-mail: holtonrecorder@giantcomm.net

Postmaster: Send address changes to the Holton Recorder, P.O. Box 311, 109 West Fourth Street, Holton, Kansas 66436. USPS 247-840

Subscription rates: One year in Jackson County \$44 (42¢ per issue); elsewhere in Kansas \$51.50 (50¢ per issue). Out-of-state, \$58 (56¢ per issue). Prices include tax. Single copy, \$1. Subscriptions may be transferred but not refunded. For information about online only subscriptions, go to holtonrecorder.net.

*Even when it upsets and overwhelms us,
truth above all.*

Drug and firearm charges follow car stop here on Thursday

An Ellinwood man was arrested on several drug and firearm charges after a car stop Thursday near Mayetta, according to Jackson County Sheriff Tim Morse.

That afternoon, sheriff's office deputies stopped Stephen Mai, 33, of Ellinwood, for a traffic violation near Mayetta. The sheriff's office had received a call reporting a vehicle matching Mai's vehicle description being driven recklessly.

Deputies stopped the 2002 Honda DRV, and Mai was arrested on the scene.

In Mai's possession, deputies located a handgun that had been reported stolen. Also in his possession, a large amount of substances believed to be methamphetamine, marijuana and other controlled substances were discovered, Morse said.

In addition, a large assortment of collectable coins and metals were found along with additional firearms and thousands of rounds of ammunition and other property, it was reported.

Mai was booked into the Jackson County Jail on charges of possession and with intent to distribute methamphetamine, possession with intent to distribute marijuana, possession of drug paraphernalia, possession of stolen property, criminal use of a firearm, unlawful possession of a prescription drug with the intent to distribute and driving while suspended. Bond was set at \$30,000.

THE HOLTON RECORDER NEWSPAPER SUBSCRIBERS GET THE ONLINE DIGITAL EDITION FOR FREE!



**When you subscribe to
The Holton Recorder
print edition,
send us your
e-mail address
and we'll send you
a username
and password for the
online, digital edition.**

RECORDER SUBSCRIPTION FORM

New _____ Renewal _____ Gift _____

Jackson County Residents - \$44 (42¢ per issue)
Elsewhere in Kansas - \$51.50 (47¢ per issue)
Out of State - \$58 (53¢ per issue)

Name _____
Address _____
Zip Code _____
Phone _____
E-Mail _____

Mail to The Holton Recorder,
P.O. Box 311, Holton, Kan. 66436
Thank You

Butterflies...

Continued from Page 1

The larvae are often called the thistle caterpillar because of their prevalence on thistle plants. They are spiny, covered with bristles and range in background coloration from mottled, pale green to dark, purplish hues, according to K-State researchers.

As the caterpillar continues to grow and shed its skin, it will spin a silk pad to attach to, coming out of it in seven to 10 days as a butterfly.

Adult butterflies range from 5.1 to 7.3 centimeters in length, and their wings are reddish-orange and brown patterned, with a white bar on the front wings and a row of five tiny black dots on the back wings.

The butterflies can be found on all continents except Australia and Antarctica.

Arrest noted

The following arrest was reported in recent days by the Holton Police Department.

■ Roderick Baptisto, 34, Holton, was arrested Aug. 5 on charges of driving under the influence, failure to maintain a single lane, operating a motor vehicle without a required interlock device, transporting an open container, speeding and no proof of insurance.



There is some concern about damage to crop fields due to the butterflies and their eggs.

When large numbers of Painted Lady Butterflies arrive in a field, there is the potential for substantial defoliation to occur, K-State crop researchers say.

Eggs are laid singly on the upper surfaces of leaves. Damage is normally confined to individual plants, but when many plants are affected, efforts to reduce defoliation, such as insecticide, may be warranted, it was reported.

Purple Heart...

Continued from Page 1

He arrived in Korea in July of 1952. Not long after his arrival, he was awarded the Combat Infantryman Badge, "a symbol of the front line soldier."

"The badge, consisting of a miniature replica of a Revolutionary War flintlock on a blue background, is awarded only to those who have come under enemy fire," *The Recorder* said on Aug. 14, 1952 of Hollenbeck's honor.

In early 1953, while with

the Seventh Infantry Division, Hollenbeck took a six-week radio course designed to prepare him for an assignment as a communications specialist. Prior to that, he had been wounded in battle, earning his Purple Heart, as *The Recorder* reported on Feb. 9, 1953, and later noted he received a five-day vacation on

rest and recuperation leave in Japan.

After the war, Hollenbeck returned to the States with Joyce, living in Hiawatha, where they raised two children. Prior to the war, Hollenbeck had worked as a brick mason, and that was also what he did after the war, as well as operating a construction busi-

ness. In 1976, the Hollenbecks moved to Clay Center, where Charles became a construction superintendent for Cheney Construction Company, retiring in 1996. He died on March 2, 2000, at the age of 69, and was buried in Greenwood Cemetery at Clay Center.

Get the word out!

Let us help you spread the word about club, church and family activities — visit *The Recorder* office at 109 W. Fourth St. in Holton; mail to *The Holton Recorder*, P.O. Box 311, Holton, KS 66436; or e-mail hollonrecorder@giantcomm.net

Circleville Christian Church Benefit Ice Cream Social and Talent Show

**Sunday, August 27
Serving Homemade
Ice Cream: 4 p.m.
Talent Show: 5:30 p.m.**

*Love offering to help offset
medical costs for Ben Owens*



SHOP LOCAL

TV Packages Built for You

| America's Top 120 | America's Top 120 Plus | America's Top 200 |
|--|--|---|
| \$49⁹⁹ /mo. 190 Channels <small>Local channels included!</small> | \$59⁹⁹ /mo. 190+ Channels <small>All America's Top 120 channels, plus regional sports!</small> | \$69⁹⁹ /mo. 240+ Channels <small>All America's Top 120 Plus and more!</small> |

- ✓ 2-Year TV Price Guarantee - no bundle required
- ✓ FREE HD for Life*
- ✓ FREE Standard Professional Installation

HBO + HBO GO
for 12 months at
NO EXTRA CHARGE

After 12 months, you will be billed the current everyday price for HBO unless you call to cancel.

FREE
Premium Channels for 3 months

Offer subject to change based on channel availability. After 3 months, you will be billed \$40/mo. unless you call to cancel.

Requires credit qualification, 2-year commitment with early termination fee and eAutoPay. Hopper upgrade fee may apply. Restrictions apply.

Call your friendly neighborhood DISH Retailer today!

Sky.com
(785) 914-5096
1020 SW Wanamaker Rd Topeka, KS 66604
serving jackson county

Offer for new and qualifying former customers only.
Important Terms and Conditions:
 Qualification: Advertiser price requires credit qualification and eAutoPay. Upfront activation and/or receiver upgrade fees may apply based on credit qualification. Offer ends 10/18/17. 2-year commitment: Early termination fee of \$20/mo. remaining applies if you cancel early. Included in 2-year price guarantee at \$49.99 advertised price: America's Top 120 programming package, local channels, HD service fees, and equipment for 1 TV. Included in 2-year price guarantee for additional cost: Programming package upgrades (\$59.99 for AT120+, \$69.99 for AT200, \$79.99 for AT250), monthly fees for additional receivers (\$5-\$7 per additional TV, receivers with additional functionality may be \$10-\$15) and monthly DVR service fees (\$10-\$15). **NOT included in 2-year price guarantee or advertised price (and subject to change):** taxes & surcharges, add-on programming (including premium channels), DISH Protect, and transactional fees. Premium Channels: HBO: After 12 months, you will be billed \$15/mo. unless you call to cancel. 3 Months Free: After 3 months, you will be billed \$40/mo. for Cinemax, Showtime, Starz, and DISH Movie. Park users: you call to cancel. Other: All packages, programming, features, and functionality and all prices and fees not included in price guarantee are subject to change without notice. After 6 mos., you will be billed \$8.99/mo. for DISH Protect unless you call to cancel. After 2 years, then-current everyday prices for all services apply. For business customers, additional monthly fees may apply. HBO®, Cinemax® and related channels and service marks are the property of Home Box Office, Inc. SHOWTIME is a registered trademark of Showtime Networks Inc., a CBS Company. STARZ and related channels and service marks are property of Starz Entertainment, LLC.
 EchoDot: Requires credit qualification and new DISH activation with Hopper® with Sling® or Hopper 3™. Free Echo Dot provided by DISH. Amazon is not a sponsor of this promotion. Amazon, Alexa, Echo Dot, and all related logos are trademarks of Amazon.com, Inc. or its affiliates. BDRIVE_20516

Pride Of Hoyt Days

**Saturday, Aug. 26
& Sunday, Aug. 27
Hoyt City Park**

SATURDAY SCHEDULE OF EVENTS

| | |
|--|--|
| 7 a.m.-10:30 a.m.: Breakfast served at the Hoyt Comm. Bldg. 7 a.m.-5 p.m.: Silent Auction, Quilt Display, Art Show in Community Bldg. 7 a.m.-4 p.m.: Model Railroad Display 8 a.m.-5 p.m.: Food, Craft & Product Vendors 8 a.m.-5 p.m.: Mud Volleyball Tourn. 8 a.m.-5 p.m.: Corn Hole Tourn. 8:30 a.m.: Warrior Dash (6th Grade-Adult) 9 a.m.-5 p.m.: Horse-drawn Wagon Rides 9 a.m.-4 p.m.: Car, Motorcycle & Tractor Show 9 a.m.-11 a.m.: Lazer Tag 9 a.m.-4 p.m.: Yard Game Area | 9:30 a.m.: Jr. Warrior Dash (Preschool-5th grade) 10 a.m.: Horseshoe Tournament 11:15 a.m.-1:15 p.m.: Video Gaming Trailer 1 p.m.: Bike Decorating Contest (RVHS Parking Lot) 1 p.m.-5 p.m.: Garden Tractor Pull 2 p.m.: PARADE (Line up at RVHS Parking Lot) 3 p.m.-7 p.m.: Fried Chicken Dinner 2:30-4:30 p.m.: Video Gaming Trailer 9 p.m.-Midnight: Live Concert w/Departure |
|--|--|

SUNDAY SCHEDULE OF EVENTS

10:30 a.m.: Community-wide - Church Service in the Park Shelter House

Come join the Hometown Fun!

PUBLIC SAFETY ANNOUNCEMENT:
Personal Utility Vehicles Not Allowed Off Main Rd.
(Exceptions made for handicapped & staff only!)

Advertising paid in part by Jackson County Tourism and these businesses:

**Family Practice Associates • Boonie's Towing • Chapel Oaks Funeral Home • Kester Animal Clinic
 Denison State Bank, member FDIC • Freestate Electric Cooperative, Inc. • Hoyt Pallet Co., Inc.
 Ehrhart Excavating, LLC • McManigal Electric • Jhett's Pizza (Hoyt Location) • Chance Construction • Hoyt Fire Department
 American Family Insurance - Les Gooderl, agent • 75 Self Storage • Calderwood's Grocery • Sutherlands**

THE PRIDE OF HOYT COMMITTEE WELCOMES EVERYONE TO THE BEAUTIFUL HOYT CITY PARK! FOR MORE INFORMATION, CALL 785-986-6758.