

## Schools cut mill levies in budgets

Valuation increase drives Holton cut

*By David Powlis*  
The assessed valuation of Holton USD 336 has been set at \$47,642,359 for this year, which represents a \$2,895,170 assessed valuation increase over last year.  
That good valuation news is helping the school board propose a new district budget with a 58.379 total mill levy, which is slightly lower than last year when the total mill levy was 58.897.  
The Holton school district expects to collect \$2,675,830 in local taxes with the proposed new budget, which is \$143,553

more in local taxes collected last year.  
The school district's proposed new budget is published on Page 7 of this edition.  
The school board will meet at 6:05 p.m. on Thursday, Aug. 24 for a public hearing to hear and answer any objections or concerns made by any school patrons.  
The assessed valuation of the school district was set at \$44,747,189 last year and \$43,586,872 the year before that.

Continued to Page 14

## Jackson Heights proposes 52.819 mills

*By Brian Sanders*  
A property valuation increase of \$1,963,639 in the Jackson Heights school district is prompting school officials to lower the district's total mill levy proposed for the 2017-18 school year, it has been reported.  
District officials have scheduled a public hearing on the budget for 7 p.m. Thursday, Aug. 24 at the Jackson Heights High School library. The hearing will be followed by USD335 Board of

Education action on the budget. District patrons are encouraged to attend the open public meeting if they have questions about the 2017-18 budget, a copy of which appears on Page 11 of today's *Holton Recorder*.  
School officials are proposing an ad valorem tax levy of 52.819 mills that will raise \$1,161,735 for the district on an assessed 2017-18 valuation of \$22,697,606, it was reported.

Continued to Page 14

## School starts this week

School will be back in session this week at all Jackson County area schools — and as always, motorists are encouraged to use the utmost caution in school zones.  
**Royal Valley's** students will be the first in Jackson County to go back to school, with classes for the 2017-18 school year starting Wednesday. School hours are from 7:53 a.m. to 3:39 p.m. at Royal Valley Middle School, from 8:05 a.m. to 3:34 p.m. at Royal Valley Elementary School and from 8:13 a.m. to 3:20 p.m. at Royal Valley High School.  
**Holton's** first day of school for the 2017-18 calendar year will be Thursday for students through ninth grade and Friday for grades 10-12, it was reported.

ed. School hours are from 8:05 a.m. to 3:05 p.m. at all district schools.  
Students at all **Jackson Heights** district schools will also return to class on Thursday. School hours in the district are from 8:20 a.m. to 3:25 p.m.  
And at **Wetmore** Attendance Center, students will return to class for the 2017-18 school year on Friday. Class times are from 8 a.m. to 3:25 p.m.  
Law enforcement and crossing guards at area schools will join forces to keep vehicles moving, get children to and from school safely and remind motorists of the reduced speeds in school zones. Motorists in school zones are also reminded that texting behind the wheel is against the law.



**Kansas Highway Trooper Brian Rethman, shown above, told local kids at the Sheriff's Day Camp last Thursday morning about the equipment that is standard on his patrol vehicle. The Sheriff's Day Camp activities were held at Banner Creek Reservoir and attracted a record number of kids, it was reported. See the story on page 2 of this edition for more information.**  
*Photo by David Powlis*

## Gunter excels at Adaptive Sports competition

*By Ali Holcomb*  
Despite a tragic accident that left him permanently disabled at a young age, Hoyt resident Dustin Gunter, now 20, is finding success on the track at state and national competitions.  
In July, Gunter received six first-place finishes at the Adaptive Sports USA Junior Nationals competition in Middleton, Wisc.  
"It was really exciting to compete and go up against people with my same disability," Gunter said. "I could never play sports in high school because of my disability, and the Paralympics allows people to do and play as much as they can."  
Gunter's parents are Linda and Chuck Gunter of Hoyt.  
In the 18-23 age division against athletes with similar disabilities, Gunter placed first in six track and field events at the junior nationals including:  
Discus — 16'83".  
Javelin — 11'27".  
200m Run — 30.49.  
100m Run — 14.38.

4x100m Relay — 1:01.44.  
400m Run — 1:20.31.  
At the end of the competition, Gunter was selected to participate in the 100m specials, which included the top nine athletes out of the 245 track athletes with any kind of disability. He placed fourth in the event.  
"My favorite event is the 100m," he said. "Almost every time I compete, I beat my PR and that's the only thing I care about. I don't care if I get last or first. If I beat my PR, I'm happy."  
After competing in a meet in Oklahoma, Gunter was asked to anchor the 4x100m relay at

nationals as a part of Louisiana Team Gumbo.  
"They liked my time and pulled me in to be a part of their team," he said.  
When he was eight years old, Gunter was involved in an ATV wreck on July 4, 2005 in a pasture. The small ATV Gunter was driving collided with a dirt bike driven by his cousin. The bicycle's brake handle pierced the left side of Gunter's skull and into his brain.  
Gunter was airlifted to Children's Mercy Hospital in Kansas City, Mo.

"When I was in the helicopter, they told my mom that I had died and came back to life four times," he said. "When I got to the hospital, I woke up and then died again. I also broke my knee, shoulder and my skull."  
Gunter was in a coma for almost two weeks and paralyzed for a year and a half.  
"I would watch sports on TV and started to be able to move my body more," he said. "After four years, I decided to focus on running since my arms don't have the ability to move."  
Six years ago, Gunter said he began competing in the statewide Special Olympics.  
Gunter was named the Most Inspirational Athlete of 2015 at the Kansas Special Olympics and lit the cauldron to officially open the summer games.  
He said that athletes competing in the Special Olympics have intellectual or developmental disabilities and everyone competes against each other.

Continued to Page 14



Dustin Gunter

## Gonzales returns to Holton with NuSound

*By Brian Sanders*  
After retiring from the U.S. Postal Service in 2012, Sam Gonzales — who, as the Topeka area manager, oversaw operations at Jackson County's post offices for about 15 years — sought a different career path.  
"The Postal Service was great to me and my family, but I was ready to move on and do something different," Gonzales said. "Hence, NuSound."  
Now, Gonzales is working on the south side of Holton's Town Square as co-owner and director of operations for NuSound, a hearing care firm started five years ago in Topeka by his wife, Belinda.  
"It is nice to be in Holton," Gonzales said. "We have a patient base in the Holton area, and this just makes it closer for our patients in Holton, Hiawatha, Sabetha and Seneca who had to travel. Now they can make that closer drive to Holton."  
The new NuSound branch office in Holton, located at 115 W. Fourth St., is open from 9 a.m. to 4 p.m. Mondays and Thursdays at present, but Gonzales said he and his wife are hoping to expand those hours and "be available five days a week."  
Belinda Gonzales founded NuSound after working for "a competitor in Topeka," Sam said, and she began looking for "a better way of conducting



**Sam Gonzales, shown at right in the photo above, is the co-owner of NuSound, a Topeka-based hearing care center that has opened an office in Holton. Shown with Gonzales is hearing instrument specialist Megan Kirkwood.**  
*Photo by Brian Sanders*

business" in starting her own hearing care company.  
At the same time, Gonzales said, he was facilitating several community meetings regarding the possible closure or sched-

ule-trimming of smaller post offices in the region, including some in Jackson County.  
"It was a very testing time for the Postal Service," said Gonzales, who also spent the

last three years of his time with USPS as Topeka's postmaster before joining his wife in the NuSound venture.

Continued to Page 5

## Purple Heart Profiles Soldier's Brady died in German bomb run

*Editor's note: This is the 65th in a series of stories about past and present Jackson County residents who earned the Purple Heart Medal, which is awarded to military personnel wounded or killed in the line of duty.*  
*The names of those profiled in these stories are among those placed on a special monument for Purple Heart Medal recipients now standing in Holton's Linscott Park.*  
— — —  
Soldier native Lloyd Brady Jr., a staff sergeant in the U.S. Army Air Corps, was one of 10 airmen aboard a B-24 Liberator nicknamed "I'll Be Back" that went out on a bomb run over southern Germany on March 18, 1944.  
But the plane was hit by flak on the mission, and six of the 10 men aboard — including Brady — lost their lives in the resulting crash. Brady earned a posthumous Purple Heart Medal for his actions.  
Born Feb. 15, 1922, the son of Lloyd (Sr.) and Opal Brady, and raised in the Soldier area, young Brady eventually moved to Wichita with his family and signed on with the Army Air

Corps. He trained at Miami Beach, Fla., Gulfport Field, Miss., and Pueblo, Colo., before he was sent to England in late 1943 as an aerial gunner.  
He joined the Eighth Army Air Force's 44th Bombardment Group, a unit nicknamed the "Flying Eight-Balls" for the winged bomb cartoon of an "eight ball" from billiards, over which were superimposed the eyes and nose of a bomb, on each plane.  
According to a news report, Brady had written a letter home on Dec. 21, 1943, stating that he was involved in combat duty and had received the Air Medal for successfully flying five missions over enemy territory.  
The "Flying Eight-Balls" were assigned to bomb the Manzell Air Armaments in Friedrichshafen, Germany, on March 18, 1944, and several B-24 Liberators took off from England that morning. Brady was on board "I'll Be Back" as the right waist gunner, alongside nine other crew members who continued to fly toward Germany.

Continued to Page 14

**TUESDAY'S FORECAST**  
Partly Cloudy/Chance of Rain, High 86  
See our weather forecast on Page 2.

**PRAIRIE BAND CASINO & RESORT**  
**THE BEST IN THE GAME!**  
WE ALWAYS BRING TO YOU: THE NEWEST GAMES | THE BEST FOOD | SUPERIOR SERVICE  
15 MINUTES SOUTH OF HOLTON OFF OF HWY 75 | prairieband.com



# DISTRICT COURT NEWS

## Traffic

Brianna A. Childers, Holton, speeding, registration violation, no proof of insurance, \$1,027.  
 Timothy R. Harrison, Topeka, driving while license cancelled, suspended or revoked, \$526.  
 Jamie M. Hooker, address not listed, registration violation, \$158.  
 Virgil L. Knoxsah, Horton, improper driving on laned roadway, operating a motor vehicle without a valid license, diversion.  
 Tonya M. Vanhook, Topeka, driving while license cancelled/suspended/revoked, \$290.

## Criminal Dispositions

State of Kansas vs. Katherine L. Carpenter, Topeka, pedestrian under the influence; sentenced to 30 days in jail, suspended; placed on six months probation and assessed court costs.  
 State of Kansas vs. Zechariah N. Martinez, Topeka, interference with law enforcement-obstruction of official duty; sentenced to one year in jail, suspended; placed on 12 months probation and fined \$100 plus court costs.  
 State of Kansas vs. Shelley D. Sharon, Emporia, disorderly conduct; sentenced to 30 days in jail, suspended; placed on six months probation and fined \$100 plus court costs.  
 State of Kansas vs. Lisa D. Workman, Skiatook, Okla.,

possession of marijuana; sentenced to six months in jail, suspended; placed on six months probation and assessed court costs.

## Filed

State of Kansas vs. Jess Misenhelter, Holton, possession of marijuana, possession of drug paraphernalia.  
 State of Kansas vs. William P. Schaefer, Hiawatha, residential burglary, theft.  
 State of Kansas vs. Sarah M. Hoskins, Emmett, possession of marijuana.  
 State of Kansas vs. Curt D. VandeVelde, St. Marys, two counts of theft, possession of heroin, possession of drug paraphernalia.  
 State of Kansas vs. Holly J. Goss, Topeka, possession of marijuana, possession of drug paraphernalia, not carrying a driver's license while driving or producing a driver's license on demand, transportation of liquor in an open container, no proof of insurance, registration violation.  
 State of Kansas vs. Alexandria K. Campbell, Lawrence, distribution or possession with intent to distribute marijuana, battery on a city or county corrections officer, aggravated endangering a child, driving under the influence, interference with law enforcement-obstruction of official duty, three counts of battery on a law enforcement officer, possession of drug paraphernalia, possession of marijuana, driving while license cancelled/suspended/revoked, transporta-

tion of liquor in an open container.

## Limited Civil Dispositions

Southview Apartments of Holton L.L.C. vs. Dakotah M. Watkins, sought judgment of \$728.71 plus interest and court costs; granted.  
 Synchrony Bank vs. Misty Mathis, also known as Misty D. Mathis, sought judgment of \$2,917.43 plus interest and court costs; dismissed.  
 Drs. Hamilton and Wilson, D.D.S., P.A. vs. Rachel Griffin, sought judgment of \$1,370 plus interest and court costs; granted judgment of \$613.39 plus interest and court costs.  
**Filed**  
 Midland Funding L.L.C. vs. Allyson White, also known as Allyson J. White, seeking judgment of \$2,798.30 plus interest and court costs.

Midland Funding L.L.C. vs. Reina Rodriguez-Higine, also known as Reina D. Rodriguez-Higine, seeking judgment of \$2,814.28 plus interest and court costs.

Holton Dental Inc. vs. Linda Bone, seeking judgment of \$201 plus interest and court costs.

Holton Dental Inc. vs. Felicia Sanders, seeking judgment of \$517 plus interest and court costs.

Midland Funding L.L.C. vs. Victoria Coffey, seeking judgment of \$622.68 plus interest and court costs.

Radiology and Nuclear Medicine L.L.C. vs. Miranda Minner, seeking judgment of \$1,174.20 plus interest and court costs.

## Marriage Licenses

Ryan C.T.V. Silva, 20, Hays Delaney Dugger, 20, Hoyt

# Wetmore school hit by vandals

The Wetmore Academic Center and ballfield concession stand were vandalized recently and the necessary clean-up will delay the start of the school year by one day, it was reported.

Sometime between 10:30 p.m. on Wednesday, Aug. 2, and 7 p.m. on Thursday, Aug. 3, the Nemaha County Sheriff's Office reports that vandals entered the school at 321 Sixth St. in Wetmore and caused "extensive damage" throughout the building and the concession stand.

Money was also stolen from the school during the incident, it was reported.

The vandalism was discovered Thursday morning, Aug. 3, on what was supposed to be the third day of school enrollment for the new term.

The sheriff's office reports that the case remains under investigation. Anyone with information regarding the vandalism

is asked to contact the Nemaha County Sheriff's Office at (785) 336-2311.

The district has hired a company to assist with the clean-up of the building prior to the start of the school year, which had been scheduled for Thursday, Aug. 17. The first day of classes will now be Friday, Aug. 18, it was reported.

Prairie Hills USD 113 Superintendent Todd Evans told The Sabetha Herald that school officials and employees don't know what prompted the vandalism.

"In visiting with them, there are many mixed feelings including anger, sadness, frustration and a complete lack of understanding of the motivation for this action," Evans said.

This is the second vandalism to USD 113 school buildings in the span of four months — Sabetha High School was struck back in April, it was reported.

## Accidents noted in county

The Jackson County Sheriff's Office has reported the following accidents:

■ At 3:05 p.m. on June 24, Tiannie Alexander, 23, Topeka, was traveling north on U.S. Highway 75 near 94th Road when her vehicle caught fire. According to the accident report, Alexander had to use the emergency brake to stop her 2005 Dodge Neon, which was a complete loss. No injuries were

reported.

■ At 7:30 a.m. on July 25, Dwight Billings, 72, Onaga, was traveling east on Kansas Highway 16 near O Road when his vehicle left the road to the right and struck a caution sign and box culvert owned by the Kansas Department of Transportation. Billings' 2001 Chevrolet sustained damage to its front bumper and hood that was listed at more than \$1,000.

# Sheriff's officers note recent arrests

The Jackson County Sheriff's Office has reported the following arrests:

■ On Aug. 3, Ranie Williams, 49, Carbondale, was arrested on a traffic warrant on a charge of failure to appear.

■ On Aug. 3, Kenneth Hahn, 35, address unknown, was arrested on two traffic warrants on charges of failure to appear.

■ On Aug. 3, Eric Fernandez, 28, Topeka, was arrested on a criminal warrant on a charge of failure to appear.

■ On Aug. 3, Teyante Dagens, 23, Topeka, was arrested on criminal warrant on a charge of failure to appear.

■ On Aug. 4, Sarah Hoskins, 37, Emmett, was arrested on charges of felony possession of marijuana and possession of illegal drug paraphernalia.

■ On Aug. 4, Holly Goss, 38, Topeka, was arrested on charges of possession of marijuana, possession of illegal drug parapher-

nal, driving while license cancelled/suspended/revoked and transporting an open container.

■ On Aug. 5, a 17-year-old male from Mayetta was arrested on charges of felony possession of marijuana, unlawful hosting of minors consuming alcohol, possession and consumption of alcohol by a minor and possession of illegal drug paraphernalia.

■ On Aug. 7, Shelly Hammer, 42, Whiting, was arrested on two criminal warrants on charges of failure to appear.

■ On Aug. 8, Robert Pyle, 44, Topeka, was arrested on a traffic warrant on a charge of failure to appear.

■ On Aug. 8, Douglas Kiessling, 38, Frankfort, was arrested on a traffic warrant on a charge of failure to appear.

■ On Aug. 8, Janiece Claiborne, 24, Topeka, was arrested on a charge of driving while license cancelled/suspended/revoked.

# Sheriff's Day Camp draws record number

A record 280 kids attended the 16th annual Jackson County Sheriff's Day Camp last week at Banner Creek Reservoir, it was reported.

"The Sheriff's Day Camp has been successful in building strong relationships between the law enforcement community and the youths of our county," according to Jackson County Sheriff Tim Morse.

The camp was held Thursday and Friday at the reservoir and featured an emergency vehicle demonstration and display, including fire trucks, ambulance, law enforcement vehicles, and an armored SWAT truck.

Emergency responders demonstrated their equipment and techniques, including a Jaws of Life demonstration, a K-9 illegal drug detection demonstration,


Life Star Helicopter landing and a felony vehicle stop and arrest demonstration.

Kids were also able to participate in an obstacle course, archery, swimming, canoeing, paddle boating, fishing, hay rack ride, wipe out and rock wall climbing.

Demonstrations were also given at the Banner Creek Observatory and Science Center, which included an eclipse program and a program by the Department of Wildlife, Parks and Tourism animal and fishing program.

Numerous volunteers including some elected and local governmental officials assisted with the camp including the Jackson County Commission, Banner






Continued to Page 3



**FUEL • CHEAP SMOKES**  
**FRIENDLY SERVICE • Open 24 hours**  
**1346 US Hwy 75 • Powhattan, KS 66527 • (785) 467-5355**

---

## Today's Weather

Tuesday		<b>Partly sunny with a chance of PM rain</b>	High: <b>86</b> Low: <b>72</b> Precip: <b>50%</b>
Wednesday		<b>Mostly cloudy with showers/T-storms</b>	High: <b>86</b> Low: <b>66</b> Precip: <b>60%</b>
Thursday		<b>Sunny</b>	High: <b>85</b> Low: <b>65</b>
Friday		<b>Partly sunny</b>	High: <b>85</b> Low: <b>65</b> Precip: <b>20%</b>
Saturday		<b>Mostly sunny</b>	High: <b>86</b> Low: <b>65</b>

BRING CUSTOMERS INTO YOUR PLACE OF BUSINESS!

You Could Be Advertising In This Prime Spot!

Call Errin, Shannon or David  
 at The Holton Recorder (785) 364-3141  
 and reserve this spot as a weather sponsor today!

TRUSTED AROUND THESE PARTS FOR 65 YEARS.

Small repairs, large installations and everything in between. Contact us. We're ready 24/7.



(785) 266-4870  
www.mcelroys.com

PLUMBING • HEATING • AIR CONDITIONING

## BANKRUPTCY

Call Today for a FREE appointment tomorrow,  
 YOUR PLACE OR OURS

## HARPER LAW, LLC

Jerry Harper - Attorney  
 John Harper - Associate  
 214 SW 6th, Suite 206, Topeka, KS  
 785-354-8188

A Debt Relief Agency Helping Individuals  
 File for Relief under the Bankruptcy Code

### Holton Housing Authority

ACCEPTING APPLICATIONS

for Efficiency, 1, 2 & 3-Bedroom Apartments

100 Southern Heights, Holton, KS • 785-364-2130

Mission: Providing decent, safe and affordable housing for all residents.

~ A PLACE TO CALL HOME ~

We pay your gas, water & trash!

Office Hours: Mon.-Fri. 9 a.m.-Noon & 1 p.m.-4 p.m.  
 Holton Housing Authority is an Equal Opportunity Provider of Housing Assistance.

## EDIGER HEARING AID SERVICE

Your hometown hearing care professionals!

FREE HEARING TEST

Available to Come to Your Home

- Virtually No feedback - No more embarrassing whistling! (patent pending)
- Directional Speech Detector - You can move from a noisy to a quiet environment and it adjusts AUTOMATICALLY!
- Automatic Telephone Response - Instantly adjust to your phone for optimal telephone communication.

Come see the New Range Digital!



Topeka family owned and operated for 30 years!

FREE 30 DAY TRIAL!

Free Hearing Evaluation Plus Personal Digital Demonstration

EDIGER HEARING AID SERVICES

3641 SW Plass Avenue • Topeka, Kansas 66611-2588 • One block East of 37th & Burlingame Road

CALL TODAY (785) 266-2000

OR 888-224-2001

"You should hear what you are missing."



## Enroll Now at the Holton Center

Registration/Payment Day

Wednesday, August 23, 2017

11:00 am—6:00 pm

From Here You Can See

WWW.HIGHLANDCC.EDU



# MEMORIES

Compiled from the Holton Recorder archives  
by Kendra Moppin

## Top 4-H Rabbits at the Jackson County Fair

### 5 Years Ago

Week of Aug. 13-19, 2012

The LifeCare Fitness Center in Holton recently transferred its exercise and fitness equipment from its former home on East Fifth Street into its new home at 416 Colorado Ave., it was reported. The site previously housed the Highland Community College outreach center.

It's been a while since there has been a summer band camp at Holton High School, something that hasn't happened in the school's recent history, according to HHS band director Sheri Bartel. But last Monday through Thursday, one such camp was held, which allowed Bartel and her students to get to know each other and have more time to practice their numbers for upcoming events. Bartel said this camp has helped both her and her band members tremendously.

New lockers for seventh and eighth grade students were one of the most significant building improvements noted during the first day of school at Royal Valley Middle School in Mayetta on Wednesday, Aug. 15.

The small, rural Jackson County community of Denison will soon celebrate 125 years of existence with a community celebration, it has been announced.

### 10 Years Ago

Week of Aug. 13-19, 2007

More than 195 children participated in the day camp that was held at Banner Creek Reservoir on Thursday and Friday, Aug. 9 and 10, it was reported. This is the seventh year the day camp has been offered, and it was the first year the camp was held on two days instead of three.

Royal Valley fifth-grader Leslie Schuetz won a poster contest at the end of the school year that was sponsored by the Jackson County Youth Coalition. As the winner, her poster was recently turned into a billboard that can be seen by motorists driving south on U.S. Highway 75 near Mayetta on the east side of the road.

Gerald Ferguson of Soldier recently received his Purple Heart and several other military decorations from Kansas congresswoman Nancy Boyda and Jefferson Lawson, a district representative of Boyda's Topeka office. With the help of his family and Lawson, Ferguson finally received his medals 55 years after serving in the Korean War.

### 15 Years Ago

Week of Aug. 13-19, 2002

The National FFA Organization recently named Jason Larison of Holton High School as one of four finalists in the Agriscience Teacher of the Year award program, it was reported. Larison is an agriculture teacher and advisor of the Holton FFA Chapter.

Debra Davies was the winner of more than \$700 in gift certificates to Holton area businesses during the Moonlight Madness drawing on Friday evening, Aug. 16.

The \$55 million expansion plans for Harrah's Prairie Band Casino have been announced. The plans include the addition of 198 hotel rooms, a visitor and convention center and a new steak house restaurant.

## Day Camp...

**Continued from Page 2**  
Reservoir, Jackson County Appraiser's Office, Jackson County Emergency Management, Jackson County Road and Bridge Department, Jackson County EMS, Kansas Department of Wildlife Parks and Tourism, Kansas Highway Patrol, Shawnee County Sheriff's Office Swat Team, KDWPT Archery in the Schools.

Potawatomi Tribal Fire Department, City of Holton, Holton Police Department, Hoyt Fire Department, Holton Fire Department, Banner Creek Observatory and Science Center, Honey Do's Septic Tank and Drain, Walmart, Roush and Son's Towing and Recovery, LLC, Fifth Street Sandwich Shop, United Rental, Circleville Christian Church, Shawnee County Parks and Rec, City of Onaga Swimming Pool, Potawatomi Victim's Services, Frito Lay, Holton Lions Club, Bikers Against Child Abuse, Life Star of Kansas and the men and women of the Jackson County Sheriff's Office.

The 17th annual Sheriff's Day Camp will be held Aug. 9 and 10 next year at Banner Creek Reservoir. Registration forms can be found on the Jackson County Sheriff's Office website at [www.jasoks.org](http://www.jasoks.org) and will be available starting May 1 at the Jackson County Sheriff's Office located at 210 U.S. Highway 75, Holton, Kansas, or for more information call 364-2251.

### 25 Years Ago

Week of Aug. 13-19, 1992

Holton has long offered four sessions of kindergarten. However, during the Holton USD 336 Board of Education meeting on Aug. 10, the board opted to continue with its original plan of three kindergarten classes for an enrollment of about 62 students.

Holton wrestler Marion Howerton fulfilled a dream by beating an opponent from a class 6A school at the Kansas Wrestling Coaches Association East-West All-State Wrestling Match on Aug. 5, at Rossville High School. Howerton, wrestling for the East squad, outpointed Dan William of Shawnee Heights 6-2 in his match at 152 pounds. Coach Bob Phillips said Howerton is the first Holton wrestler ever to compete at this prestigious match.

Jackson County Extension Agent Nancy Nelson presented Holton resident Homer Clark with a special award from the Kansas 4-H Foundation. Clark was honored as a 25-year supporter of 4-H and the "Kansas 4-H Journal."

### 50 Years Ago

Week of Aug. 13-19, 1967

Installation was completed Saturday, Aug. 12, on a new directory sign for St. Dominic's Church in Holton.

The Jackson County Fair started Monday morning, Aug. 14. The most noticeable fairground improvement greeting fair-goers is the new show pavilion completed last week. With expanded seating and visibility, many more spectators will be able to enjoy the livestock judging. The old show barn has been converted into an additional tie barn.

Scampy, a pet squirrel, and his owner, 12-year-old Mike McGrew of Denison, paid a visit to *The Holton Recorder* office on Friday, Aug. 11. Scampy is the survivor of a pair of baby squirrels McGrew found in a nest in the timber near the McGrew home 4½ miles south of Denison.



Young rabbit aficionados from Jackson County's 4-H clubs brought their bunnies to the recent Jackson County Fair, and some received recognition for their animals. In the top left photo, Lily Cannon (left) of the Jackson County Gypsies earned best in show honors with her Netherland Dwarf rabbit, while Rhett Kennedy of the Soldier Boosters won the reserve champion award with his Himalayan rabbit. In the photo at above left, Cannon (left) also earned grand champion honors in intermediate showmanship, and Cheyenne Hittle of the Hoyt Livewires was named reserve champion in the intermediate division. In the top right photo, Jodi White (left) of the Soldier Boosters was named champion senior rabbit showman, while MaKenzie Kennedy, also of the Soldier Boosters, was named reserve champion senior rabbit showman. In the photo at above right, Dakota Hittle of the Hoyt Livewires was named grand champion beginner showman. The reserve grand champion beginner showman award went to Abigail Milroy (not pictured), also of the Hoyt Livewires, who also earned the top award in the rabbit fur competition.

Submitted photos

**Host an Exchange Student Today!**  
(for 3, 5 or 10 months)

**Make a lifelong friend from abroad.**

Enrich your family with another culture. Now you can host a high school exchange student (girl or boy) from France, Germany, Scandinavia, Spain, Australia, Japan, Brazil, Italy or other countries. Single parents, as well as couples with or without children, may host. Contact us ASAP for more information or to select your student.

*Victoria from Australia, 17 yrs.*  
Enjoys spending time with her family and younger siblings. Victoria plays volleyball and is excited to learn new sports while in America.

*Giorgio from Italy, 16 yrs.*  
Loves to play baseball and spend time with his dogs. Giorgio also plays the guitar, and his dream is to join a drama club at his American high school.

Stephanie at 316-734-5048  
Amy at 1-800-736-1760 (Toll Free) [host.asse.com](http://host.asse.com) or email [info@asse.com](mailto:info@asse.com)

**asse USA**  
INTERNATIONAL STUDENT EXCHANGE PROGRAM  
Founded in 1976  
ASSE International Student Exchange Program is a Public Benefit, Non-Profit Organization.  
For privacy reasons, photos above are not photos of actual students.

**Tips for Walking Safely to School**

Walking is fun, but you need to be safe while doing it. Follow these tips to make sure you get to and from school without any problems.

**Walk together**  
Younger children should always walk with an adult. Tell your parents that walking is great exercise and a nice way to spend time together.

If your parents say that you can walk to school on your own, remember these tips:

- Walk with a friend when possible.
- Ask your parents to help you pick a safe route to school; one that avoids danger.
- Stick to the route you picked with your parents. Don't let friends talk you into shortcuts that are more dangerous.
- When you are near the street, don't push, shove, or chase each other.
- Never hitchhike or take rides from people not arranged by your parents.
- Talk to your parents and teacher about any bullying that may happen during your walk.

**Be seen**  
Remember, drivers may not be able to see you well. Always wear bright-colored clothes and if it is dark or hard to see, carry flashlights or wear reflective gear.

**Look for traffic**  
Watch out for cars and trucks at every driveway and intersection on your walk to school. Look for drivers in parked cars. They may be getting ready to move.

**Cross the street safely**

1. Stop at the curb or edge of the street.
2. Look left, right, left and behind you and in front of you for traffic.
3. Wait until no traffic is coming and begin crossing.
4. Keep looking for traffic until you have finished crossing.
5. Walk, don't run across the street.

**Obey traffic signs, signals and adult school crossing guards**

For more resources and information on Safe Routes to School, please visit the National Center for Safe Routes to School Web site at [www.saferoutesinfo.org](http://www.saferoutesinfo.org)

**This advertisement sponsored by:**

**Giant COMMUNICATIONS**  
785-362-9331 • 1-800-346-9084 • [www.giantcomm.net](http://www.giantcomm.net)

**ORSCHELN FARM & HOME**

**PAIL SALE**

**BUY A BUCKET FOR \$1.99**

**FRIDAY & SATURDAY AUGUST 18<sup>TH</sup> & 19<sup>TH</sup>**

**SAVE 15% ON EVERYTHING THAT FITS IN IT!**

Excludes firearms, gift cards, power tools, layaways, special orders and pre-booking sale orders. Boots must be in a box. In-stock items only. No rainchecks. Cannot be combined with any other offer.

**1500 S. Old Highway 75  
Sabetha, KS • 785-284-2334**  
**MON-SAT: 8AM - 7PM  
SUN: 9AM - 6PM**

**1133 SW Wanamaker Road, Suite 100  
Topeka, KS • 785-228-9688**  
**MON-SAT: 8AM - 8PM  
SUN: 8AM - 6PM**

Join our **FREE** loyalty Program

**GET \$5 OFF 1<sup>ST</sup> \$25 PURCHASE**

**GROW REWARDS™**

- Receipt-Free Returns
- Year-End Purchase List
- Coupons

and so much more!

**Recorder Classifieds Get Results! Call 364-3141**



# OPINION

GUEST COMMENTARY

## The sobering prospect of nuclear war in our time

By Glenn Mollette

President Donald Trump has vowed to meet more North Korea threats with "power the likes of which the world has never seen" and Kim Jong-un has responded with a plan for a nuke attack on the U.S. island of Guam. Plans are being made for a horror scenario we must take seriously.

Most of us want to be confident that America with the aid of Japan and our strategic defense system can stop any missile attack.



We know we have plenty of bombs to strike North Korea in return. Just one of our submarines named "USS Kentucky" has 200 nuclear bombs most of which are more powerful than the one bomb that struck Hiroshima.

This is frightening that enough power is on one submarine to take out an entire country or more.

Such a scenario makes me wonder how much can the planet stand? If four or five countries ever get into an unleashing of nuclear weapons on each other, I believe it would be more than our planet could survive.

If our planet could stay intact, the planet might take hundreds of years to ever recoup from the devastation. The planet is amazing but mankind has developed the ability to annihilate our beautiful planet.

Business Insider printed a story a couple of years ago that shortly after the end of World War II, the scientists who developed the atomic bombs dropped on Japan tried to envision the kind of nuclear event that could lead to the destruction of not just cities, but the entire world.

A recently declassified document shared by nuclear historian Alex Wellerstein gives the verdict that scientists at the Los Alamos laboratory and test site reached in 1945.

They found that "it would require only in the neighborhood of 10 to 100 Supers of this type" to put the human race in peril.

With so many atomic bombs now existing in the world, it would be fathomable that 10 to 100 could be unleashed given the right scenario of hostility between enough countries.

No one is thinking that many will be unleashed by anyone.

What if North Korea successfully unleashes several of their stocked nuclear bombs? What if we cannot intercept them all? Our defense may be great but even the greatest defense systems have flaws and holes.

How many would die? If North Korea unleashes one then we know our President Trump may unleash one on North Korea or take out tens of thousands of lives. The casualties could end up in the millions.

If Kim Jong-un launches one toward our mainland, there is no guarantee it would hit Seattle or Chicago. It could end up hitting any town or even rural area in the United States. Do you think you are safe just because you in an obscure town? If nuclear missiles are fired, we are all at risk.

Please keep in mind that everything will be interrupted. With any kind of national crisis, gasoline shortages occur. Grocery store supplies might be interrupted. Power grids could be demolished or interrupted. There are many ways our lives could be interrupted if we survive an attack.

The following are things experts recommend you can do to protect yourself, your family and your home if you believe an attack is imminent.

•**Build an Emergency Supply Kit**, which includes items like non-perishable food, water, a battery-powered or hand-crank radio, extra flashlights and batteries.

You may want to prepare a kit for your workplace and a portable kit to keep in your car in case you are told to evacuate.

•**Make a Family Emergency Plan.** Your family may not be together when disaster strikes, so it is important to know how you will contact one another, how you will get back together and what you will do in case of an emergency.

•**Find out from officials if any public buildings in your community have been designated as fallout shelters.** If none have been designated, make your own list of potential shelters.

These places would include basements or the windowless central area of middle floors in high-rise buildings.

What to do during a nuclear blast?

The following are guidelines for what to do in the event of a nuclear explosion.

•Listen for official information via online, radio or TV and follow the instructions provided by emergency response personnel.

•If an attack warning is issued, take cover as quickly as you can, below ground if possible, and stay there until instructed to do otherwise.

•Find the nearest building, preferably built of brick or concrete, and go inside to avoid any radioactive material outside.

•If better shelter, such as a multi-story building or basement can be reached within a few minutes, go there immediately.

•Go as far below ground as possible or in the center of a tall building. The goal is to put as many walls and as much concrete, brick and soil between you and the radioactive material outside.

•Expect to stay inside for at least 24 hours unless told otherwise by authorities.

What to do if you are caught outside?

•Do not look at the flash or fireball - it can blind you.

•Take cover behind anything that might offer protection.

•Lie flat on the ground and cover your head. If the explosion is some distance away, it could take 30 seconds or more for the blast wave to hit.

•Take shelter as soon as you can, even if you are many miles from ground zero where the attack occurred - radioactive fallout can be carried by the winds for hundreds of miles.

•If you were outside during or after the blast, get clean as soon as possible, to remove radioactive material that may have settled on your body.

•Remove your clothing to keep radioactive material from spreading. Removing the outer layer of clothing can remove up to 90 percent of radioactive material.

•If practical, place your contaminated clothing in a plastic bag and seal or tie the bag.

•When possible, take a shower with lots of soap and water to help remove radioactive contamination. Do not scrub or scratch the skin.

•Wash your hair with shampoo or soap and water. Do not use conditioner in your hair because it will bind radioactive material to your hair, keeping it from rinsing out easily.

What to do after a nuclear blast?

Decay rates of the radioactive fallout are the same for any size nuclear device.

However, the amount of fallout will vary based on the size of the device and its proximity to the ground. Therefore, it might be necessary for those in the areas with highest radiation levels to shelter for up to a month.

The heaviest fallout would be limited to the area at or downwind from the explosion and 80 percent of the fallout would occur during the first 24 hours.

People in most of the areas that would be affected could be allowed to come out of shelter within a few days and, if necessary, evacuate to unaffected areas.

Keep listening to the radio and television for news about what to do, where to go and places to avoid.

Stay away from damaged areas. Stay away from areas marked 'radiation hazard' or 'HAZMAT.' Remember that radiation cannot be seen, smelled or otherwise detected by human senses.

The bottom line is that we all hope and pray that China, Japan and other nations will work with us to help us resolve this lingering nightmare with Kim Jong-un.

The problem is that it won't be over. There will still be a chance of this recurring nightmare that will come back from North Korea or even very soon Iran.

The scenario of a world holocaust is becoming too imminent. We must seriously answer this question, "Will the world ever really rest with North Korea having nuclear weapons?"

Another question is - Can we really allow this to continue?

Do we sit back and allow Iran to put us in the same position in the next couple of years?

Note: Glenn Mollette is a columnist who is read in all 50 states.

## PLAINS FOLK: Don't try to fill another man's boots

By Jim Hoy

Decades ago when I was in college and had gone home to Cassoday for the Christmas break (the semester used to begin in mid-September and end in mid-January, which meant that you'd go home intending to write those research papers between Christmas and New Year's but procrastinate until you found yourself back on campus doing research papers when you should have been studying for finals), I put off working on term papers by going to visit Raymond and Melba Prewitt.



Raymond was a calf roper and bulldogger and Melba was a well-known trick rider who lived a few miles south of us and raised quarter horses.

They were a little older than I and their daughter Debbie, who was pretty small at the time, would later be joined by three brothers.

Raymond was a good story teller and would occasionally pull his mandolin out from under the bed for a little music.

On this particular night, talking about this and that, Raymond mentioned that he'd recently heard about a woman down around Rosalia, about 15 miles south of Cassoday, who had just lost her second husband.

The unusual thing was that he had died from rattlesnake venom, but this was in December.

Come to find out, her first husband had also died from a rattlesnake bite.

He had been struck in the foot while out by the barn.

A year or two later his widow had remarried, and it just so happened that husband number two wore the same size boots as husband Number One.

It seems that the snake's fangs had broken off and were embed-

ded in the boot.

Thus when husband Number Two pulled on the boots, the fangs that had killed Number One struck again, killing Number Two.

There is a moral lesson to be learned here: husband Number Two should never try to fill husband Number One's boots.

I was recently reading J. Frank Dobie's book about rattlesnakes and came across a couple of variations of the same story, thus verifying its status as an urban (or in this case, a rural) legend.

One version Dobie recounts, similar to the one Raymond told, takes place in Oregon, while the other is about a cowboy who puts on a new pair of boots to go courting a pretty girl.

When a rattlesnake strikes him in the foot, he dies and the boots pass on to a friend who, after a decent interval, also starts courting the girl.

He, too, dies, although from an apparently unknown cause, and a third cowboy inherits the

boots and again starts courting the girl.

When he dies, suspicions in the neighborhood grow about the girl and her fatal influence.

Fortunately, before she is accused of witchcraft or administering poison to her suitors, and before a fourth cowboy shows up to court the girl, the fangs are discovered in the boot.

The problem with these stories is that the venom would long ago have dissipated, and the worst thing that could have happened to husband Number Two or to suitors two and three is that the scratches from the fangs may have become infected and maybe blood poisoning might have set in.

But that's not as exciting as a delayed snake bite.

Note: Jim Hoy is retired professor of English at Emporia State University and co-author of the Plains Folk column.

## School lunch menus signal start of classes

### Jackson Heights

Thursday, Aug. 17: Breakfast - Whole-grain cereal, fruit, juice and milk; Lunch - Chicken nuggets, mashed potatoes and brown gravy, green beans, fruit and milk.

Friday, Aug. 18: Breakfast - Biscuit with sausage gravy, fruit, juice and milk; Lunch - Cheese pizza, red and green bell peppers, tossed salad, fruit, graham snack and milk.

### Holton

Thursday, Aug. 17: Breakfast - Sausage biscuit sandwich or cereal, choice of fruit and/or juice and milk; Lunch - Pizza or turkey and cheese sub sandwich, celery sticks, cherry tomatoes, fresh fruit and milk.

Friday, Aug. 18: Breakfast - Scrumptious coffee cake or cereal, choice of fruit and/or juice and milk; Lunch - Chicken patty on whole-wheat roll or sunbutter and jelly sandwich, mashed potatoes and gravy, green beans, fresh fruit and milk.

### Royal Valley

Wednesday, Aug. 16: Breakfast - Frudel, fruit and milk; Lunch - Turkey and cheese on a bun, potato wedges, fresh broccoli, fruit and milk.

Thursday, Aug. 17: Breakfast - Biscuit and gravy, fruit and milk; Lunch - Burrito with salsa, refried beans, corn, fruit and milk.

Friday, Aug. 18: Breakfast - Pancake on a stick, fruit and milk; Lunch - Chicken leg, mashed potatoes with gravy, pepper strips, roll, fruit and milk.

### Wetmore

Thursday, Aug. 17: Breakfast - Sausage or egg biscuit sandwich; Lunch - Hamburger on a whole-grain bun, barbecue baked beans, tater tots, mandarin oranges, bunny grahams and milk.

Friday, Aug. 18: Breakfast - Breakfast pizza; Lunch - Chicken nuggets and nachos, seasoned green beans, baby carrots, pineapple and milk.

© Randy Glasbergen  
glasbergen.com



"Eternity has no calendars, no days, no weeks, no years...but I still have trouble managing my time!"

## THE HOLTON RECORDER

Serving the Jackson County community for 150 years

---

**ESTABLISHED 1867**  
Published semi-weekly at 109 West Fourth Street, Holton, Jackson County, Kansas 66436. Periodical postage paid at Holton (Kan.) Post Office. phone: (785) 364-3141; toll free: (888) 364-3141; fax: (785) 364-3422; e-mail: holtonrecorder@giantcomm.net

**Postmaster:** Send address changes to the Holton Recorder, P.O. Box 311, 109 West Fourth Street, Holton, Kansas 66436. USPS 247-840

**Subscription rates:** One year in Jackson County \$44 (42¢ per issue); elsewhere in Kansas \$51.50 (50¢ per issue). Out-of-state, \$58 (56¢ per issue). Prices include tax. Single copy, \$1. Subscriptions may be transferred but not refunded. For information about online only subscriptions, go to holtonrecorder.net.

*Even when it upsets and overwhelms us,  
truth above all.*

## The Quality You Want



AGRICULTURE | EQUESTRIAN | GARAGE | COMMERCIAL

**With a Price That Fits Your Budget**

Whether you're in the market for a storage building, horse barn or farm shop, Morton Buildings can construct a building that meets your needs without breaking your budget.

**Eight offices serving Kansas**  
**800-447-7436**  
**mortonbuildings.com**

©2012 Morton Buildings, Inc. Morton Buildings is a registered trademark of Morton Buildings, Inc. All rights reserved. A listing of 6C licenses available at [mortonbuildings.com/licenses.aspx](http://mortonbuildings.com/licenses.aspx). REF CODE 043.

800-447-7436 • [mortonbuildings.com](http://mortonbuildings.com)

## THE HOLTON RECORDER

### NEWSPAPER SUBSCRIBERS GET THE ONLINE DIGITAL EDITION FOR FREE!

**When you subscribe to The Holton Recorder print edition, send us your e-mail address and we'll send you a username and password for the online, digital edition.**

### RECORDER SUBSCRIPTION FORM

New \_\_\_\_\_ Renewal \_\_\_\_\_ Gift \_\_\_\_\_

**Jackson County Residents - \$44 (42¢ per issue)**  
**Elsewhere in Kansas - \$51.50 (47¢ per issue)**  
**Out of State - \$58 (53¢ per issue)**

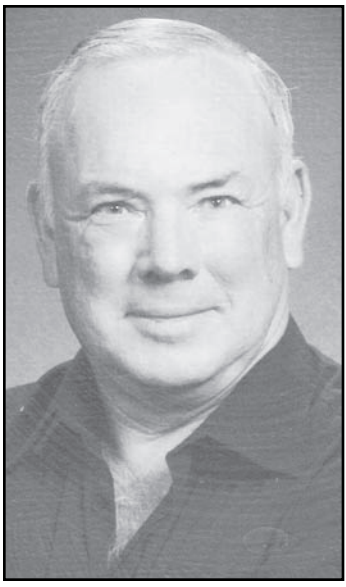
Name \_\_\_\_\_  
Address \_\_\_\_\_  
Zip Code \_\_\_\_\_  
Phone \_\_\_\_\_  
E-Mail \_\_\_\_\_

Mail to The Holton Recorder,  
P.O. Box 311, Holton, Kan. 66436  
Thank You



# OBITUARIES

## Netawaka UMC



**Baxter**  
Russell Eugene Baxter, 74, Mayetta, died Thursday, Aug. 10, 2017, at his home.

He was born Oct. 3, 1942, in Holton, the son of Lawrence and Lillie Beth Ray Baxter. He graduated in 1960 from Mayetta High School.

Mr. Baxter served in the U.S. Army from 1962 to 1965 during the Vietnam War era, and he served for a year and seven months with USARPAC. He worked his early years at Whelan's in Topeka and later for many years at Dupont and Frito Lay, both in Topeka. He retired from Fed Ex in Topeka, which was formerly known as Watkins Delivery. He also was a lifetime farmer and rancher.

He was a member of Mayetta Christian Church, Holton American Legion Post 44, Holton VFW Post 1367 and Mayetta Cutting Horse Club.

He married Gladys Cato in January 1966 in Georgia. They divorced in 1980. He married Marquita Buckmeier on March 7, 1990, in Las Vegas, Nev. She survives.

Other survivors include a son, Gary Baxter and wife Amber, Mayetta; a daughter, Dana Harris and husband Chris, Mayetta; two stepsons, Tom Miller and wife Glenda, Topeka, and Michael Hoog and wife Jen, Ishpeming, Mich.; 16 grandchildren; and nine great-grandchildren. He was preceded in death by a grandson, Colby Harris, on July 21, 2017; and a brother, Ronald Baxter, on May 31, 2011.

Funeral services will be held at 10 a.m. Tuesday at Mercer Funeral Home in Holton. Burial with military honors will follow in Denison Cemetery. Family will greet friends from 6 p.m. to 7:30 p.m. today at the funeral home.

Memorial contributions may be made to the Russell Baxter Memorial Fund, to be designated at a later date and sent in care of Mercer Funeral Home, P.O. Box 270, Holton, KS 66436.

Holton Recorder 8/14/17

### Dougherty

Peter T. Dougherty, 80, Lawrence, formerly of Prairie Village, died Wednesday, Aug. 9, 2017, at his home surrounded by family.

He was born in Kansas City, Mo., and was a graduate of Rockhurst High School and College.

Survivors include his wife, Ernestine, Lawrence; a son, Patrick Dougherty and wife Kathy; a daughter, Deanne Arnote and husband Jay; stepchildren, Janice Early, Nancy Spiegel, Neil Early, Keith Early, Chris Early and Teresa Riley and husband Byron, Holton; and 16 grandchildren. He was preceded in death by a brother, James Dougherty SJ; a sister, Margaret Hodes; and a son, Kevin.

Mr. Dougherty willed his body to The University of Kansas Medical Center program. A memorial mass will be celebrated at 11 a.m. Saturday, Aug. 19 at St. Ann's Catholic Church in Prairie Village. No flowers are requested.

Memorial contributions may be made in his name to Lawrence Visiting Nurses Hospice, sent in care of Rumsey-Yost Funeral Home, 601 Indiana St., Lawrence, KS 66044.

Holton Recorder 8/14/17

## Obit guideline

When submitting obituaries to be printed in *The Recorder*, we request that obituaries be sent by the mortuary or funeral home handling the funeral arrangements. Have the mortuary or funeral home contact us at (785) 364-3141 or email holtonrecorder@giantcomm.net for more information.

**WILSON'S DIRECT**  
MOTORS & TIRES  
Just west of Holton on Hwy. 16  
(785) 364-1915

### Jones

Bernice Lucille Jones, 96, Holton, died Wednesday, Aug. 9, 2017, at Medicalodges Jackson County.

She was born Feb. 5, 1921, in Soldier, the daughter of Charles and Dolly Murphy Kranz. She earned her G.E.D. and attended Soldier schools. She was a life-long member of the Jackson County community.

Mrs. Jones began her career at Slimaker Dress Factory and later worked as a CNA and CMA at Jackson County Nursing Home, now Medicalodges Jackson County, retiring after 25 years.

She was a member of Holton First Baptist Church and volunteered with Head Start in Holton.

She married Willis Jones on Dec. 12, 1942. He died July 27, 1973. She married Oliver R. Jones on Jan. 25, 1975. He died Oct. 19, 2001.

Survivors include two stepdaughters, Jean Brewer, Ontario, Ore., and Darlene Wade, Fruitland, Idaho; four grandchildren, Jeff Sanchez and wife Shelly and Lisa Dodson and husband Tim, all of Kearney, Mo.; Tammy Sanchez, Lawrence, and Julie Gregory and husband Scott, Linwood; nine great-grandchildren; and eight great-great-grandchildren. She was preceded in death by a daughter, Marylou Sanchez, in 2011; a son, Ronald A. Jones, in 2012; and two stepdaughters, Shirley Fellman and Donna Cook.

Memorial services will be held at 10:30 a.m. Wednesday at Mercer Funeral Home in Holton. A private family inurnment will be held in Holton Cemetery.

Memorial contributions may be made to First Baptist Church, sent in care of Mercer Funeral Home, P.O. Box 270, Holton, KS 66436. Holton Recorder 8/14/17

## Reunion planned

Members of the John and Sara Albin family have scheduled a reunion for noon on Sunday, Sept. 10, at the Circleville Lodge, 201 Lovejoy Ave. in Circleville.

Family members are asked to bring a covered dish or dessert. Coffee and tea will be provided.

For more information, contact Donna at 785-806-5536.

By Mary E. Edwards

Aug. 13 was another beautiful day. Henry Pagel lit the altar candles at Netawaka United Methodist Church as the recorded "Leave It There" played. Worship leader Marilyn Banaka read the announcements.

Joys and concerns were shared. Marcia and Arnold Robertson celebrated their 50th anniversary with a family trip to Branson, Mo., and then the two of them went to Washington, D.C. and enjoyed seeing many special things. Marcia mentioned touring the National Cathedral where 4,000 people worship — quite a contrast to our little church. She said it was nice to be home. Glenn Oxandale expects to be released from the hospital soon.

Marilyn led the responsive call to worship, and the congregation greeted one another before singing the song of praise, "What A Friend We Have In Jesus." Verona Grannell was in charge of recorded music.

The Rev. Younghwan Won led the reading of the congregational prayer. "Surely The Presence Of The Lord" was the prayer hymn, which was followed by silent prayer, the pastoral prayer, the Lord's Prayer and prayer response, "Care Chorus."

Henry collected the offering, and the Doxology was sung. The scripture lesson was Matthew 14:26-32, Jesus' disciples seeing Him walk on water. Pastor Young's sermon was "Come!"

When Jesus walked on the water, the disciples were at first frightened, thinking they saw a ghost. When they were convinced it was really Him, Peter asked if he could also walk on the lake, and Jesus answered him, "Come!"

Peter walked toward Jesus until he became afraid of the wind and began to sink and called out "Lord, save me." Jesus reached out and caught Peter, saying, "Why did you doubt?"

We often hear the question, "Why do bad things happen to good people?" Sometimes people think they know the answer, but mostly we never know why. The only thing we do know is God is with us in good times and bad times. Let us never give up the hope of God. "Come, don't be afraid or discouraged, for I am with you."



The Holton Fire Department recently received a \$1,500 grant from TransCanada to be used toward the purchase of a thermal imaging camera. Lieutenant Jon Motto (left) is shown above receiving the grant funds from Steve Askren, a TransCanada technician who lives in rural Holton. The department's current thermal imaging camera is 10 years old and is used to detect heat signatures in a variety of situations. Photo by Ali Holcomb

## NuSound...

Continued from Page 1

Today, NuSound operates offices in Topeka and Wamego, as well as Holton, and one of the Gonzales' main goals in their business is that "people will see that we do things differently," Sam said. One means of accomplishing that goal, he noted, is working with customers' primary care providers.

"We know that a hearing problem could be related to other health issues, so we work with your primary care physician," he said. "Any time that you're tested, we send that information to your primary care physician. We test our patients on an annual basis."

Those tests include hearing assessments and checks for tinnitus, more commonly known as "ringing in the ear," and complementary evaluations are available for anyone, he said.

"It's truly rewarding to be able to see our patients improve their lives," Gonzales said. "That's really kind of our motto — improving lives, one year at a time."

NuSound's staff has also been trained to work on hearing aids, he said, and the company is an independent dealer that services and sells "hearing aids for every home budget."

"We have been trained to work on hearing aids," he added, "because we want to try to make those last as long as we possibly can."

Gonzales also described NuSound as "a family business," because in addition to him and his wife, one of their daughters, Marissa Gonzales, is the company's director of marketing and patient care as well as a hearing instrument specialist. Another daughter works out of the To-

peka office as a patient care provider, and their son is also looking at a career in audiology, he added.

"He just graduated (from The University of Kansas) and he's going to be a doctor of audiology," Gonzales said. "So it runs in the family."

Gonzales said that so far, he has enjoyed the change in careers, mainly through "getting to see and meet new people in a different season of their lives." But he and his family are excited to expand their business into Holton, a community that's near and dear to them.

"We've been trying to come here for years, and when we finally signed the agreement on this office, my wife and I said, 'Hallelujah!'" he said.

For more information, call (785) 783-8121 or visit nusoundhearing.com

## AREA CHURCH DIRECTORY

Please report any changes in service or personnel to the Recorder at 364-3141. Thank You.

<p><b>Bethany Baptist Church</b> 821 New York • 364-4533 Pastor Ron Sellens Youth Minister David Noland Sunday: 9:30 a.m. Sunday school 10:15 a.m. Worship service 1 p.m. Sunday afternoon service Wednesday: 7:15 p.m. Prayer meeting</p> <p><b>Bucks Grove UMC Church</b> Pastor: Charlotte Milroy • 234-4243 Sunday: 9 a.m. Church service</p> <p><b>Christ's Church</b> Southern Heights Clubhouse Pastor Jon Hanna Information 364-3468 Sunday: 8:30 a.m. Fellowship 9 a.m. Worship</p> <p><b>New Life Church of the Nazarene</b> 100 Topeka Ave., Holton • 364-3642 Rev. Kevin Kneisley Sunday: 9:30 a.m. Sunday school 10:45 a.m. Worship service</p> <p><b>Circleville Christian Church</b> 7701 254th Rd., Circleville Brody Bliss, Minister Brandon Winters, Associate Minister Sunday School: 9:15 a.m. Sunday Worship: 8 a.m. Traditional Service 9:15 a.m. Cowboy Church 10:45 a.m. Contemporary Worship Website - circlevillechristian.com Email - circlevillechristian@yahoo.com</p> <p><b>Circleville United Methodist</b> Pastor: Charlotte Milroy • 234-4243 Sunday: 10:30 a.m. Worship Service</p> <p><b>Community of Christ Church</b> 222 New Jersey • Pastor Dean Sharp Sunday 10 a.m. Worship service</p> <p><b>Delia Presbyterian Church</b> 514 Jackson St. • Rev. Doug Phenix Sunday: 10 a.m. Morning worship Check sign board for other events.</p> <p><b>Denison Bible Church</b> 300 W. 5th St. • Pastor Tom Fraunfelter Sunday: 10 a.m. Sunday School 11 a.m. Worship 785/935-2464 • 785/422-2953</p> <p><b>Denison Reformed Presbyterian</b> Rev. J. Edward Hindman • 935-2348 Sunday: 10 a.m. Bible class 11 a.m. Worship service Lunch following the service 1:15 p.m. Afternoon Service</p> <p><b>Evangel United Methodist Church</b> 227 Pennsylvania Ave. • 364-3834 Sun.: 8:50 a.m. Life Journey (contemporary service) 10 a.m. Sunday school 11 a.m. Traditional worship service Church - office@evangelumc.org Pastor - pastor@evangelumc.org</p> <p><b>First Baptist Church of Holton</b> 404 Juniper, 364-3423 Sr. Pastor: Tim O'Byrne Director of Discipleship - Rhett Totten Sunday: 9:15 a.m. Sunday School 10:30 a.m. Worship Services 5:15 &amp; 6 p.m. Youth Groups Wed.: 10 a.m. Bible Study • 6:30 p.m. Choir Friday: 7 a.m. Women's Breakfast 6:45 a.m. Men's Breakfast</p> <p><b>First Baptist Church of Holy</b> Pastor David Bumworth • 986-6446 Wednesday night prayer: 7 p.m. Sunday: 9 a.m. Sunday school 10 a.m. Worship service 7 p.m. Sunday evening worship</p>	<p><b>First Christian Church</b> 5th and Wisconsin • 364-2545 Dr. Jim McCollough, Pastor Sunday: 9:45 a.m. Sunday School 10:45 a.m. Worship</p> <p><b>First United Methodist Church</b> Pastor Kathy Williams 1401 W. 4th, Holton • 364-3275 Sunday Schedule: 9:00 a.m. Sunday School 10:15 a.m. Worship firstumc@giantcomm.net</p> <p><b>Holton Kingdom Hall of Jehovah's Witnesses</b> 12350 214th Rd., Holton • 364-4279 Sunday Public Talk: 10 a.m. • jw.org</p> <p><b>Hoyt United Methodist Church</b> Rev. Bev McCurdy • (c) 785-220-0711 Sunday School: 9 a.m. • 10 a.m. Worship www.hoytunitedmethodistchurch.com</p> <p><b>Immanuel Lutheran Church, Netawaka</b> Pastor Michael Van Zelzer 9 a.m. Sunday Worship 10 a.m. Sunday School 10 a.m. Adult Bible Class <b>Lakeview Faith Chapel</b> <b>Pentecostal Church</b> 3.5 miles south of Holton on U.S. 75 Pastor Steve Cappelman • 364-2416 Sunday: 9:30 a.m. Sunday school 10:15 a.m. Worship service</p> <p><b>Larkinburg Christian Church</b> Rev. Mark Armstrong Sunday: 9:30 a.m. Sunday school 10:30 a.m. Church service</p> <p><b>Mayetta Christian Church</b> Ernest Coleman - Pastor Sunday: Fellowship &amp; Waffles: 8:15 a.m.-8:45 a.m. Sunday school: 8:45 a.m.-9:30 a.m. Prayer Circle: 9:30 a.m.-9:50 a.m. Worship service - 10 a.m.-11:15 a.m. Wednesday: Bible Study - 6 p.m.-7 p.m.</p> <p><b>Mayetta United Methodist</b> Rev. Howard Sudduth Sunday: 9 a.m. Morning worship service and Sunday school</p> <p><b>Netawaka United Methodist</b> Rev. Younghwan Won Sunday: 8:15 a.m. Worship</p> <p><b>Onaga New Hope Lutheran Church, ELCA</b> Rev. Charlene Banes, Pastor Sunday: 9 a.m. Worship 10:15 a.m. SS, Adult Bible Class Bible Study: Tuesday @ 7 p.m. Holy Communion 1st &amp; 3rd Sunday</p> <p><b>Our Lady of the Snows Church</b> Fr. Marianand Mendem 166 and "I" Road, Mayetta, Kan. • 597-5656 1st, 3rd, &amp; 4th Sunday Mass 8:30 a.m. 2nd Sunday Mass 1 p.m.</p> <p><b>Potawatomi Pentecostal Church</b> 4.5 miles west on 134th Rd., Mayetta Rev. Marcia Potts Sunday: 10 a.m. Sunday school 10:45 a.m. Worship service</p> <p><b>Potawatomi United Methodist</b> Rev. Howard Sudduth Sunday: 9:50 a.m. Sunday school 10:30 a.m. Worship</p> <p><b>St. Dominic Catholic Church</b> Pastor: Fr. Marianand Mendem 416 Ohio, Holton, 364-3262 Saturday: 5:30 p.m. Mass • Sunday: 10:30 a.m. Mass Confessions 30 minutes before mass. www.jaccatholics.org</p>	<p><b>St. Francis Xavier Catholic Church</b> Pastor: Fr. Marianand Mendem 3rd &amp; James, Mayetta, 966-2690/364-3262 Sunday Mass: 8 a.m. Confessions 30 minutes before mass. www.jaccatholics.org</p> <p><b>St. Thomas Episcopal Church</b> 512 Wisconsin, Holton • Rev. Art Rathbun Services on 2nd &amp; 4th Sunday Sunday Services: 10 a.m. 785-224-8798 stthomasholton@holtomail.com</p> <p><b>Soldier Christian Church</b> 834-5750 • Ron Ahlgren, Minister Luke Schreiber: Youth Minister Sunday: Sunday School: 9:30 a.m. Church Services: 10:30 a.m. Sr. &amp; Sr. High Youth Group: 5 p.m.</p> <p><b>St. James Catholic Church</b> 306 5th St., Wetmore • Pastor Father Hammes Saturday Mass: 6:30 p.m. Confessions: 30 min. prior to mass</p> <p><b>Trinity Lutheran Church</b> 401 Cheyenne Pastor Brian Stark 364-2206/364-2029 Sunday School: 9 a.m. • Worship: 10 a.m.</p> <p><b>Wetmore Bible Church</b> 217 Iowa St., Wetmore Pastor Gary Heitz • 866-2444 Sunday: 10 a.m. Sunday school (for all ages) 11 a.m. Worship Hour 11:30 a.m. Children's Church 7 p.m. Adult Bible Study Tuesday: 1:30 p.m. Women's Bible Study Wednesday: 7 p.m. Youth Group (Jr. High &amp; HS Ages) 8 p.m. Bible Study</p> <p><b>Wetmore United Methodist</b> Pastor Jessie Zimmerman (785) 866-2512 Parsonage • 866-5556 Church Sunday: 10 a.m. Worship service</p> <p><b>Whiting Baptist Church</b> Dan Burns, Pastor Sunday: 9 a.m. Sun. school 10 a.m. Worship service</p> <p><b>Whiting United Methodist</b> Rev. Younghwan Won Sunday: 10 a.m. Education • 11 a.m. Worship</p> <p><b>New Hope Family Church</b> 515 Iowa, Holton Pastor: Sterling Hudgins Wednesday Meal: 6:30 p.m. Wednesday Service: 7:15 p.m. Sunday Worship: 8:30 a.m.</p>
---	---	--



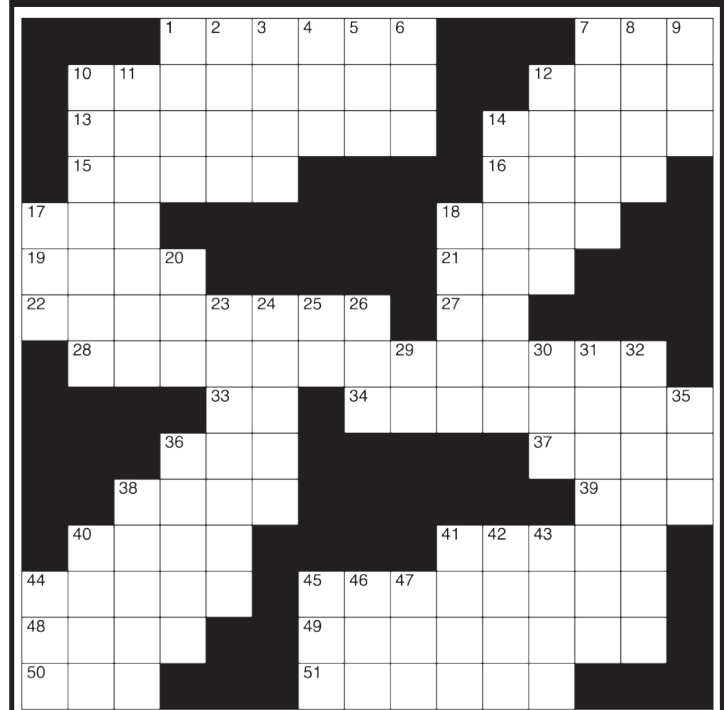
This church directory is sponsored by:

We sell the best and service the rest!!

# Jayhawk TV & Appliances

435 New York Holton, KS 66436 (785) 364-2241 jayhawktv@giantcomm.net

## CROSSWORD PUZZLE



### CLUES ACROSS

- |                                       |  |
|---------------------------------------|--|
| 1. Would                              | 28. Lethargic                          |
| 7. Pitching stat                      | 33. Integrated circuit                 |
| 10. Wounded                           | 34. Let your mind wander               |
| 12. Guitarist Clapton                 | 36. Midway between north and northeast |
| 13. Penalizes                         | 37. Nomadic palace                     |
| 14. Female MMA fighter VanZant        | 38. Posted                             |
| 15. Proverb                           | 39. Trouble                            |
| 16. Urban gym                         | 40. Wise                               |
| 17. Midway between northeast and east | 41. Make happy                         |
| 18. La __ Tar Pits                    | 44. Dog-__: worm or battered           |
| 19. Go out to eat                     | 45. One who fixes                      |
| 21. Oral allergy syndrome             | 48. Central European                   |
| 22. Where some are put                | 49. Sleighs                            |
| 27. Spiral galaxy                     | 50. Exponential time hypothesis        |
|                                       | 51. Puts within                        |

### CLUES DOWN

- |  |   |
|--|---|
| 1. Typically noncoding molecules (abbr.) | 25. Commercial                              |
| 2. Former Secretary of State             | 26. Chap                                    |
| 3. River in Belgium and France           | 29. Farm state                              |
| 4. Unnilhexium                           | 30. Chief research officer                  |
| 5. "Fall Guy" actor Majors               | 31. Poked holes in                          |
| 6. Tooth caregiver                       | 32. Chutes and __                           |
| 7. Lucci character "Kane"                | 35. What cows say                           |
| 8. Latvian capital                       | 36. A desert in southern Israel             |
| 9. Pet detective Ventura                 | 38. Isaac's mother                          |
| 10. Sporting dog                         | 40. Sodium                                  |
| 11. External genitals                    | 41. Absence of effort                       |
| 12. "The Secret Room" novelist           | 42. A way to articulate                     |
| 14. Ancient wonder                       | 43. Greek god of war                        |
| 17. Electronic data processing           | 44. Midway between east and southeast       |
| 18. Autocratic                           | 45. Run batted in                           |
| 20. Defunct European organization        | 46. The longest division of geological time |
| 23. Removed flesh                        | 47. Public broadcaster                      |
| 24. Indicating silence                   |   |



# SPORTS *Monday*



Royal Valley head football coach Jake Lott, shown above in the top photo at left, and assistant coach Andy Gower, looks on as Panther Greg Koon form tackles teammate AJ Hastings in a drill earlier this summer while Panther Doran Rupnicki awaits his turn. In the photo above, Panther Gavin Cumpston passes the football to teammate Chance Lyming in the scrimmage against Jackson Heights held last month.

Photos by Michael Powl

## Panthers return 6 football starters

■ RVHS to visit Hiawatha on Sept. 1 for first game

*By David Powl*  
The Royal Valley Panthers football team is preparing for the 2017 season and hopes to improve on last season's 3-6 overall record. The Panthers were 2-5 in the Big Seven League. The Panthers were 6-3 overall and 5-2 in the league in 2015 when the team finished third in the league. The Class 3A Panthers will be led by head coach Jake Lott, who is now in his fourth year at RVHS. Assistant coaches for the team are Dave Barta, Kyle Porter, David Boucher and Andy Gower. "Our team will have a mix of experienced football players and younger players breaking into the lineup," coach Lott said about his team. "With steady improvement, the team will look to finish strong in district play." Coach Lott said the team's defensive secondary and linebacker core should be strengths for the team. "Offensively," he said, "while we had a large turnover due to

graduation last May, we look to be more explosive and better able to execute some plays." Coach Lott said the Panthers lost 10 key players off last year's team - Kyle Stithem, Jacob Box, Blake Garrison, Kenny Aitkens, Garrett Rodewald, Noah Ensley, Ian Lee, Connor Grosseohme, Amos Ingels and Hayden Fenske. This year's team is expected to have about 40 players on the roster. The Panthers have six starting players returning from last season and five of them are seniors. \*Doran Rupnicki, a 6-2, 250-pound, senior offensive and defensive lineman, is back. Rupnicki was an honorable mention Big Seven performer last season. \*Dillon Smith, a 5-9, 160, senior running back and defensive back, is also back. Smith was the team's leading rusher last season. Other senior returning starters are: \*Blake Chance, a 6-2, 180,

tight end and linebacker. \*Brian Shane, 6-2, 248, offensive lineman and linebacker. \*Ninahii Frisby, a 5-11, 140, running back and defensive back. \*Brandon Rodewald, a 6-2 junior running back and linebacker, is also back on the team and was its leading tackler last season. Coach Lott lists the following top prospects for this season: \*Zach Schnacker, a 6-1, 232, senior offensive and defensive lineman. \*Tyler Nioce, a 6-0, 175, senior offensive and defensive lineman. \*Bryce Garrison, a 5-11, 160, junior offensive and defensive lineman. Coach Lott lists the following top newcomers to the team: \*Komesch Spoonhunter, a 6-5 sophomore offensive and defensive lineman. \*Gavin Cumpston, a 5-11, 140, sophomore quarterback and defensive back. \*Jaiden Wamego, a 6-3, 205, sophomore tight end and defen-

sive lineman. \*Chance Lyming, a 5-9, 150, sophomore running back and defensive back. "We will need our young players to step up into roles," coach Lott said. "Our returning starters will have to take on bigger roles on the field. Also, we will need to have our starters stay healthy while we develop some depth throughout the season." Coach Lott said Royal Valley should compete well in the Big Seven, giving his own team a middle-of-the-pack preseason ranking while Nemaha Central, Sabetha, Perry-LeCompton and Holton take up the top four preseason league spots. Other league teams include Hiawatha, Jeff-West, Riverside and ACCHS. The Panthers open the varsity season by visiting league-foe Hiawatha on Friday, Sept. 1. District foes this season will be Oskaloosa (Oct. 20) and Silver Lake (Oct. 26).

### 2017 ROYAL VALLEY HS FOOTBALL

2017 Royal Valley High School football schedule

Varsity			
Date	Opponent	Location	Time
Sept. 1	Hiawatha	Hiawatha	7 p.m.
Sept. 8	Nemaha Central	Hoyt	7 p.m.
Sept. 15	Riverside	Wathena	7 p.m.
Sept. 22	Sabetha	Hoyt	7 p.m.
Sept. 29	Holton	Hoyt	7 p.m.
Oct. 6	Jeff West	Meriden	7 p.m.
Oct. 13	Perry-LeCompton	Hoyt	7 p.m.
Oct. 20	Oskaloosa	Oskaloosa	7 p.m.
Oct. 26	Silver Lake	Silver Lake	7 p.m.
Oct. 31	Bi-District Playoffs	TBA	TBA
Nov. 4	Regional Playoffs	TBA	TBA
Nov. 10	Sectional Playoffs	TBA	TBA
Nov. 17	Sub-State Playoffs	TBA	TBA
Nov. 25	State Championships	TBA	TBA

Junior Varsity			
Date	Opponent	Location	Time
Sept. 5	Hiawatha	Hoyt	4:30 p.m.
Sept. 11	Nemaha Central	Seneca	4:30 p.m.
Sept. 18	Riverside	Hoyt	4:30 p.m.
Sept. 25	Sabetha	Sabetha	4:30 p.m.
Oct. 2	Holton	Holton	4:30 p.m.
Oct. 9	Jeff West	Hoyt	4:30 p.m.
Oct. 16	Perry-LeCompton	Perry	4:30 p.m.

*This schedule brought to you by:*  
**CALDERWOODS GROCERY**  
Hoyt, KS • 785-986-6234

## UPCOMING PREP SPORTS

**TUESDAY, AUGUST 21: HHS Varsity Girls Golf - 8:30 a.m.**  
@ Village Greens

Sponsored by  
**Farmers State Bank**  
209 Montana Avenue • Holton, KS 66436  
Phone 785.364.4691 • Fax 785.364.4330

Hometown Banking with Your Neighbors and Friends  
www.fsbks.bank

Member FDIC

K16 Quail Forever Chapter is sponsoring a

## Youth Wingshooting Clinic

The Quail Forever Organization

Saturday, Aug. 19  
9 a.m.-11 a.m.

Banner Creek Reservoir  
Boy Scout Area

(10975 K-16 Highway - enter off N Road)  
(Follow QF signs)

Ages: 16 and under

We will also have an

## Archery Clinic

Taught by Gary Keehn  
of Kansas Archery In The Schools.

All supplies will be provided. No charge for the Clinic.  
Lunch Provided by K-16 Chapter.

For more information contact Jerry Valdez (785) 577-6127  
Lu Griffiths (785) 364-0767 or Greg Tanking (785) 305-1417

## HOLTON TOUCHDOWN CLUB

### 8th Annual Golf Tournament & Member Picnic

**Saturday, Aug. 26 • Holton Country Club**  
Lunch served at 11 a.m., followed by golf.

**\*3 or 4 Person Scramble - \$40 per person**  
*(Includes golf, lunch & social)*

**\* Corporate Sponsor with Team - \$160**  
*(Includes golf, lunch, social & signage on course)*

**\* Lunch & Social - \$15 per person**  
*(Includes lunch, social & season preview)*

**\*Corporate or Individual Sponsors - \$100**  
*(Signage on course, no golf)*

Please make checks payable to Holton Touchdown Club.  
Mail registrations to: Holton Touchdown Club  
P.O. Box 161, Holton, KS 66436  
Any Questions Call Shannon Wright 785-408-2224 or Don Fate 785-364-7967

\*\*Early registration is GREATLY appreciated, in order to determine the appropriate amount of meals.\*\*  
All proceeds will be used to enhance equipment, technology, facilities and performance of Holton High School, Middle School, and Youth Football Programs.



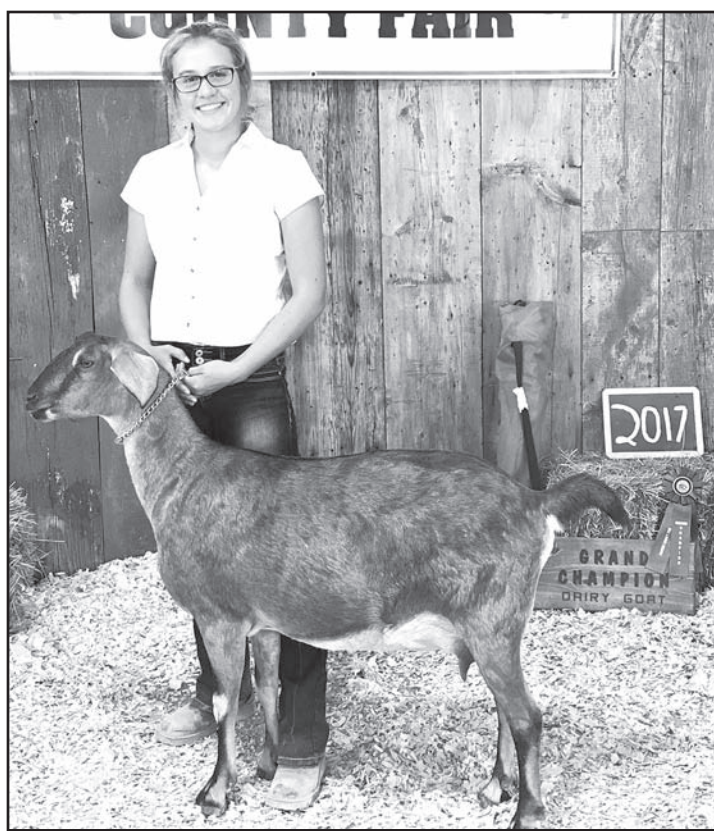
Dustin Gunter of Hoyt is shown above raising funds for his recent trip to the Adaptive Sports USA Junior Nationals competition in Middleton, Wisc. Gunter won six first-place medals in several track and field events at the competition. A story that starts on the front page of this issue tells more about Dustin.

Submitted photo

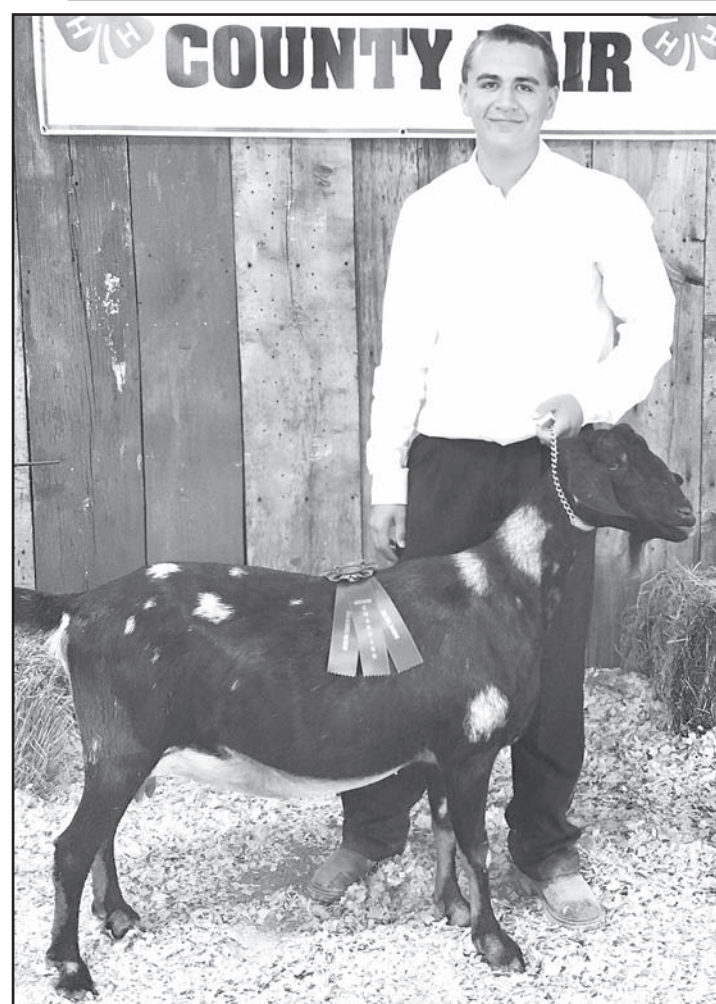




Sophie Bosse of the Mayetta Mustangs showed the top bantam breeding champion at this year's fair. Submitted photo



MaKenzie Kennedy of the Soldier Boosters showed the grand champion dairy goat at this year's fair. She also was named the reserve champion senior showman. Submitted photo



Rhett Kennedy was named the top senior showman at the dairy goat competition at this year's fair. Submitted photo



Sadie Bosse of the Mayetta Mustangs 4-H Club showed the grand champion pen of three, dual purpose pullets, at this year's Jackson County 4-H Fair. Submitted photo

**OPEN CLASS GARDEN**  
**Champion:** Paul Porter (honorary).  
**Reserve Champion:** Brenna Bontrager (cherry tomatoes).  
**Display Champion:** Donna McNicholas.  
**Display Reserve Champion:** Mary Schock.

**POTATOES, 5**  
**Purple:** Donna McNicholas.  
**Blue:** Blake Morris.  
**White:** Brenna Bontrager and Eli Bontrager.

**TOMATOES, 5**  
**Purple:** Shirly Horr.  
**Blue:** Mary Schock (2), Brenna Bontrager, Sarah Phillips and Eli Bontrager.  
**Red:** Tina Bailey, Donna McNicholas, Cathleen Reed, James Bailey and Kennedy Smith.

**ONIONS, 5**  
**Reserve Champion:** Brenna Bontrager.  
**Blue:** Sarah Phillips and Eli Bontrager.  
**Red:** Allan Simmons (2) and Blake Morris.  
**White:** David Schock.

**GARDEN DISPLAY, 5 DIFFERENT TYPES OF VEGETABLES**  
**White:** Barb Shields.

**OPEN CLASS FIELD CROPS GRASS HAY, 10-INCH**  
**Red:** Dalton Peters.

**PET SHOW CATS**  
**Purple:** Devin McKinney.

**BEST COSTUMED DOG**  
**Blue:** Mary Leigh Myers.

More results appear on page 13!



## Open Class Public Notice

**OPEN CLASS PHOTOGRAPHY**  
**Champion:** Evan Fox.  
**Reserve Champion:** Connie Allen.

**BEST OF SHOW**  
**Action Photo:** Sandi Butler.  
**Animal Photo:** Sandy Allen.  
**Black and White Photo:** Connie Allen.  
**Flower Photo:** Mary Schock.  
**Geometric Design:** Jessica Schuette.  
**Nature Photo:** Evan Fox.  
**Portrait:** Jessica Schuette.  
**Still Photo:** David Schock.

**COLOR PHOTO**  
**Champion:** Evan Fox.  
**Purple:** Sandy Allen (2), Sandi Butler (2), David Schock, Mary Schock, Jessica Schuette, Marion Schuette, Connie Allen, Lorna Smith, Shelby Fox, Sarah Gideon and Amariah Allen.  
**Blue:** Breanna Gouge (2), David Schock, Mary Schock, Jessica Schuette, Marion Schuette, Lorna Smith and Madeline Montgomery (2).  
**Red:** Rebecca Pope and Evan Fox.

**BLACK & WHITE PHOTO**  
**Reserve Champion:** Connie Allen.  
**Purple:** Sandi Butler, Jessica Schuette, Marion Schuette and Lorna Smith.  
**Blue:** Sandy Allen, Sandi Butler, Jessica Schuette and Marion Schuette.

**COMPUTER ENHANCED OR MANIPULATED**  
**Purple:** Jessica Schuette.  
**Blue:** Sandy Allen.

**OPEN CLASS FOOD PRESERVATION**  
**Champion:** Barb Shields.  
**Reserve Champion:** Tina Bailey.  
**Best of Show Vegetable:** Barb Shields.  
**Section Best of Show Vegetable:** Barb Shields.  
**Best of Show Pickle:** Tina Bailey.  
**Best of Show Sweet Spread:** Jody Holthaus.  
**Best of Show Fruit:** Tina Bailey.  
**Second Best of Show Fruit:** Tina Bailey.

**SWEET SPREADS**  
**Blue:** Jody Holthaus.  
**Red:** Charlotte Utz.

**FRUITS, JUICES, FRUIT MIXTURES**  
**Purple:** Tina Bailey.

**LOW ACID VEGETABLES**  
**Champion:** Barb Shields.  
**Purple:** Barb Shields.  
**Blue:** Cathleen Reed.

**TOMATO/TOMATO PRODUCTS**  
**Purple:** Tina Bailey.  
**Blue:** Jody Holthaus.  
**Red:** Barb Shields.

**PICKLES**  
**Reserve Champion:** Tina Bailey.  
**Blue:** Charlotte Utz and Sarah Phillips.

**DRIED FOODS**  
**Red:** Sarah Phillips.

(Published in The Holton Recorder, Holton, Kan., on Monday, Aug. 14, 2017.)

### USD 336-Holton

NOTICE OF HEARING 2017-2018 BUDGET

USD# 336

The governing body of Unified School District 336 will meet on the 24th day of August, 2017 at 6:05 PM, at 515 Pennsylvania, Holton, KS for the purpose of hearing and answering objections of taxpayers relating to the proposed use of all funds and the amount of tax to be levied. Detailed budget information (including budget profile) is available at District Office and will be available at this hearing.

The Amount of 2017 Tax to be Levied and Expenditures (published below) establish the maximum limits of the 2017-2018 Budget. The "Est. Tax Rate" in the far right column, shown for comparative purposes, is subject to slight change depending on final assessed valuation.

	Code 99 Line	2015-2016 Actual		2016-2017 Actual		PROPOSED BUDGET 2017-2018		
		Actual Expenditures (1)	Actual Tax Rate* (2)	Actual Expenditures (3)	Actual Tax Rate* (4)	Expenditures (5)	Amount of 2017 Tax to be Levied (6)	Est. Tax Rate* (7)
<b>OPERATING</b>								
General	06	10,366,258	20.000	8,961,981	20.000	7,791,820	847,345	20.000
Supplemental General (LOB)	08	2,554,123	16.771	2,553,301	16.807	2,525,111	779,153	16.354
<b>SPECIAL REVENUE</b>								
Bilingual Education	14	34,959		36,000		79,000		
Virtual Education	15	215,722		176,293		276,906		
Capital Outlay	16	503,581	8.000	222,172	8.000	3,042,088	381,139	8.000
Driver Training	18	11,295		8,722		40,942		
Food Service	24	462,069		491,080		713,697		
Professional Development	26	34,776		27,576		161,189		
Parent Education Program	28	11,300		11,300		37,000		
Summer School	29	28,107		28,438		54,131		
Special Education	30	1,326,307		1,381,414		1,539,372		
Career and Postsecondary Education	34	381,650		377,485		527,352		
Federal Funds	07	271,411		272,613		217,701		
Gifts and Grants	35	0		8,501		3,365		
At Risk (K-12)	13	800,000		887,402		1,064,072		
<b>Fund—Continued</b>								
KPERS Special Retirement Contribution	51	920,648		909,487		1,405,158		
Contingency Reserve	53	0		0				
Textbook & Student Material Revolving	55	168,077		123,332				
Activity Fund	56	183,626		205,867				
<b>DEBT SERVICE</b>								
Bond and Interest #1	62	1,464,325	14.025	1,473,926	14.090	1,263,731	668,193	14.025
<b>COOPERATIVES**</b>								
Special Education	78	5,577,675		5,378,372		5,958,059		
<b>TOTAL USD EXPENDITURES</b>	<b>100</b>	<b>25,315,909</b>	<b>58.796</b>	<b>23,535,262</b>	<b>58.897</b>	<b>26,700,694</b>	<b>2,675,830</b>	<b>58.379</b>
Less: Transfers	105	6,186,644	xxxxxx	4,540,930	xxxxxx	2,963,187	xxxxxxx	xxxxxxx
<b>NET USD EXPENDITURES</b>	<b>110</b>	<b>19,129,265</b>	<b>xxxxxx</b>	<b>18,994,332</b>	<b>xxxxxx</b>	<b>23,737,507</b>	<b>xxxxxxx</b>	<b>xxxxxxx</b>
<b>TOTAL USD TAXES LEVIED</b>	<b>115</b>	<b>2,459,392</b>	<b>xxxxxx</b>	<b>2,532,277</b>	<b>xxxxxx</b>	<b>2,675,830</b>	<b>xxxxxxx</b>	<b>xxxxxxx</b>
<b>TOTAL TAXES LEVIED</b>	<b>125</b>	<b>2,459,392</b>		<b>2,532,277</b>		<b>2,675,830</b>		
Assessed Valuation - General Fund	128	\$38,357,009		\$39,500,462		\$42,367,253		
Assessed Valuation - All Other Funds	130	\$43,586,872		\$44,747,189		\$47,642,359		
<b>Outstanding Indebtedness, July 1</b>								
		2015		2016		2017		
General Obligation Bonds	135	21,500,000		20,990,000		20,400,000		
Lease Purchase Principal	153	2,099,112		1,742,687		1,440,038		
<b>TOTAL USD DEBT</b>	<b>155</b>	<b>23,599,112</b>		<b>22,732,687</b>		<b>21,840,038</b>		

\* Tax Rates are expressed in Mills  
 \*\* Sponsoring District Only

*Rex Frazer*  
 President

*Dennis Folk*  
 Clerk of the Board



# Jackson County 2016 Delinquent Tax List

(First published in The Holton Recorder, Holton, Kan., on Monday, Aug. 7, 2017.)

SALE OF JACKSON COUNTY - NOT FINAL SALE NOTICE IS HEREBY GIVEN THAT LINDA GERHARDT, TREASURER OF JACKSON COUNTY, KANSAS WILL SELL AT MY OFFICE IN THE CITY OF HOLTON ON THE FIRST TUESDAY IN SEPTEMBER, 2017 THE FOLLOWING LANDS AND TOWN LOTS SITUATED IN SAID COUNTY AND STATE, UNLESS SAID TAXES AND CHARGES ARE PAID BEFORE THE DATE OF SALE. SALE WILL BE MADE TO JACKSON COUNTY ONLY, NOT TO ANY INDIVIDUALS AS PROVIDED BY STATUTE OF KANSAS 79-2301. LISTED BELOW IS A CERTIFIED LIST OF DELINQUENT REAL ESTATE TAXES FOR TAX YEAR 2016.	STEWART, RAGINA M Prop Addr: 211 CENTRAL AVE 66419 DENISON (O.T.) , LOTS 75-79 CENTRAL AVE (ODD) SECTION 33 TOWNSHIP 07 RANGE 16E 321.22	KOGER, WILLIAM C & CAROLYN A % LORI FORD Prop Addr: 525 PENNSYLVANIA AVE 66436 HOLTON (O.T.) , LOT 69 PENNSYLVANIA AVE SECTION 03 TOWNSHIP 07 RANGE 15E 1,019.19
	SWEANY, ROGER L Prop Addr: 102 K-16 HWY 66419 DENISON (O.T.) , BEG 57.9S NW/C LOT 18 CENTRAL AVE S TO SW/C LOT 10 CENTRAL AVE 361.79	LONGHOFER, JAMES G & BRANDEE L Prop Addr: 410 IOWA AVE 66436 HOLTON (O.T.) , LOT 48 IOWA AVE SECTION 04 TOWNSHIP 07 RANGE 15E 2,452.67
	VILLINES, RENEE M; JOHNSON, DARIN L Prop Addr: 303 CENTRAL AVE 66419 DENISON (O.T.) , LOTS 85 THRU 97 (ODD) CENTRAL AVE SECTION 33 TOWNSHIP 07 RANG 1,311.23	LUNDIN, CHAD Prop Addr: DAKOTA AVE 66436 VETTER'S 4TH ADD. , N/2 LOT 57 DAKOTA AVE SECTION 04 TOWNSHIP 07 RANGE 15E 48.03
<b>CIRCLEVILLE</b> BROWNING, ANNETTA L Prop Addr: 303 GRANT ST 66416 CIRCLEVILLE (O.T.) , E28 LOT 4 & W35 LOT 3 BLK 3 SECTION 21 TOWNSHIP 06 RANGE 14E 193.26	<b>HOLTON</b> ACKERMAN, LOIS & FULKERSON, DANIEL Prop Addr: 717 NEW JERSEY AVE 66436 HOLTON (O.T.) , LOT 91 NEW JERSEY AVE SECTION 03 TOWNSHIP 07 RANGE 15E 642.03	MCCAMMON, CHAD & STEPHANIE Prop Addr: 203 VERMONT AVE 66436 HOLTON (O.T.) , LOT 15 & S30 LOT 17 VERMONT AVE SECTION 10 TOWNSHIP 07 RANG 1,176.86
DELANY, HEATH Prop Addr: SHERIDAN ST 66416 CIRCLEVILLE (O.T.) , LOT 1 BLK 7 & BEG SW/C SAID LOT S22.5 E24 N22.5 W24 TO POB 13.14	APTURE C/O CPI Prop Addr: 818 WISCONSIN AVE 66436 HOLTON (O.T.) , LOT 106 WISCONSIN AVE SECTION 03 TOWNSHIP 07 RANGE 15E 1,530.22	MEISTER, SANDRA L C/O CLAYCAMP, SANDRA Prop Addr: 518 WISCONSIN AVE 66436 HOLTON (O.T.) , LOT 66 WISCONSIN AVE SECTION 03 TOWNSHIP 07 RANGE 15E 590.54
DELANY, HEATH Prop Addr: 201 LINCOLN ST 66416 CIRCLEVILLE (O.T.) , BEG SE/C BLK 7 W100 N80 E100 S80 TO POB SECTION 21 TOWNSHIP 329.84	BAILEY, KENNETH F & CINDIE Prop Addr: 400 INDIANA AVE 66436 DRAKE & FENN'S SUB. NO 1 , LOT 2 INDIANA AVE LESS RD ROW SECTION 03 TOWNSHIP 07 2,048.97	MEYER, LYNNA & CAROL JOYCE; TR % STITES, FLOYD R JR & JEANETTE Prop Addr: 224 W SECOND ST 66436 HOLTON (O.T.) , LOT 16 WISCONSIN AVE SECTION 10 TOWNSHIP 07 RANGE 15E 787.37
THORTON, TERRI Prop Addr: 307 LINCOLN ST 66416 CIRCLEVILLE (O.T.) , LOT 8 BLK 8 SECTION 21 TOWNSHIP 06 RANGE 14E 249.14	BICKFORD, KEVIN Prop Addr: 625 OHIO AVE 66436 HOLTON (O.T.) , LOT 83 & N/2 LOT 81 OHIO AVE SECTION 03 TOWNSHIP 07 RANGE 15E 1,935.59	MONTGOMERY, NOEL R & MEGAN L Prop Addr: FIRST ST 66436 S10, T07, R15E, BEG 50S C/L OF S END NEW JERSEY AVE S786.8 TO POB E265 N145 W265 257.54
<b>DELIA</b> HOLTHAUS, EDITH Prop Addr: 301 OAK ST 66418 S28 , T09 , R13E , LOTS 45 & 47 NORA AVE 605.12	BOTTENBERG, KARI A Prop Addr: 200 TOPEKA AVE 66436 INTERSTATE ADD. , LOTS 16,17 & 18 BLK 9 TOPEKA AVE SECTION 09 TOWNSHIP 07 RANGE 498.84	MOORE, CLIFFORD C C/O MOORE, TEDDY Prop Addr: 935 IOWA AVE 66436 UNIVERSITY ADD. , LOTS 35,37,39 & N/2 LOT 33 BLK C IOWA AVE SECTION 04 39.38
JOHNSON, DE ELLA A & CYNTHIA LEE C/O PENDLETON, RYAN Prop Addr: 519 JACKSON AVE 66418 DAVID, LOTS 5,7,9 & 11 JACKSON AVE SECTION 28 TOWNSHIP 09 RANGE 13E 409.80	BROCKMAN, SCOTT D, PENNY J, CODY D Prop Addr: 215 LINCOLN AVE 66436 INTERSTATE ADD. , LOTS 31 & 32 BLK 9 LINCOLN AVE SECTION 09 TOWNSHIP 07 RANG 1,409.30	MORRIS, ELLIOTT D Prop Addr: 802 VERMONT AVE 66436 HOLTON (O.T.) , LOT 100 VERMONT AVE SECTION 03 TOWNSHIP 07 RANGE 15E 440.41
KELLER, FRED C Prop Addr: 519 WASHINGTON AVE 66418 DAVID , LOTS 1 THRU 9 WASHINGTON AVE (ODD) SECTION 28 TOWNSHIP 09 RANGE 13E 774.69	BUEHLER, CAROL I & DAROLD JAY Prop Addr: 612 WISCONSIN AVE 66436 HOLTON (O.T.) , W125 LOT 76 WISCONSIN AVE SECTION 03 TOWNSHIP 07 RANGE 15E 1,138.66	OWENS, ROBERT T Prop Addr: 323 NEW JERSEY AVE 66436 HOLTON (O.T.) , LOT 41 NEW JERSEY AVE SECTION 10 TOWNSHIP 07 RANGE 15E 1,782.29
MCMILLIN, H JOE & VIRGINIA C Prop Addr: 504 DELIA AVE 66418 DAVID (1ST ADD.) , LOTS 18,20,22 & 24 DELIA AVE SECTION 28 TOWNSHIP 09 RANGE 816.92	BURGET, GEORGE L & DOROTHY H Prop Addr: TENTH ST 66436 S03 , T07 , R15E , BEG 742.5N & 1320E SW/C NW/4 N235 TO C/L OF ELK CRK W140 46.64	PAYLESS AUTO SALVAGE C/O LOVVORN, JIMMY Prop Addr: VERMONT AVE 66436 S03, T07, R15E, ACRES BEG SE/C OF NW/4 N639.79 W159.44 TO POB SW97.17 NW288.04 3,321.21
MELECHINSKY, GARY A & REBECCA ADAMS Prop Addr: 403 NORA AVE 66418 DAVID (1ST ADD.) , LOTS 39,41 & 43 NORA AVE SECTION 28 TOWNSHIP 09 RANGE 13E 426.04	CABALLERO, LETICIA Prop Addr: 607 NEW YORK AVE 66436 HOLTON (O.T.) , LOT 73 NEW YORK AVE SECTION 03 TOWNSHIP 07 RANGE 15E 1,270.62	RUSSELL, LISA A Prop Addr: 413 ILLINOIS AVE 66436 DRAKE & FENN'S SUB. NO 1 , LOTS 15 & S/2 LOT 17 ILLINOIS AVE SECTION 03 TOWNSHIP 1,779.79
WILSON, ROBERT H & HELEN J Prop Addr: 203 EAST ST 66418 DELIA (O.T.) , LOTS 61,63,65 & 67 EAST ST SECTION 28 TOWNSHIP 09 RANGE 13E 395.87	CHILDERS, JUDY L Prop Addr: 609 OHIO AVE 66436 HOLTON (O.T.) , N/2 LOT 73 & S/2 LOT 75 OHIO AVE SECTION 03 TOWNSHIP 07 RANGE 1,138.66	RUSSELL, LISA A; MORGAN, DAVID Prop Addr: 230 TOPEKA AVE 66436 INTERSTATE ADD. , LOTS 4,5 & 6 BLK 9 TOPEKA AVE SECTION 09 TOWNSHIP 07 RANGE 1,828.67
<b>DENISON</b> ANDERSON, PAUL L Prop Addr: 400 SECOND ST 66419 DENISON (O.T.) , LOTS 51,53,55,57 WESTERN AVE SECTION 33 TOWNSHIP 07 RANGE 243.08	CLARK, HOWARD DAVID Prop Addr: 426 NEW JERSEY AVE 66436 HOLTON (O.T.) , LOT 56 NEW JERSEY AVE SECTION 03 TOWNSHIP 07 RANGE 15E 2,382.30	SCHEID INC Prop Addr: ROGERS DR 66436 HOLTON INDUSTRIAL PARK , LOT 8 & 9 LESS E100 FT LOT 8 SECTION 33 TOWNSHIP 06 340.41
CAPPLEMAN, EDWILL Prop Addr: 308 WESTERN AVE 66419 DENISON (O.T.) , LOTS 86-108 WESTERN AVE (EVEN) SECTION 33 TOWNSHIP 07 RANGE 16E 292.82	CONGER, TWILA I; TR C/O LEON CONGER Prop Addr: 704 MINNESOTA AVE 66436 DRAKE & FENN'S SUB. NO 1 , LOTS 30,32 & W/2 LOT 28 MINNESOTA AVE & ADJ VAC ALLE 1,015.02	SCHIED, RUSSELL; SPIKER, TERESA M Prop Addr: FRONTAGE RD 66436 HOLTON INDUSTRIAL PARK , E100 FT LOT 8 SECTION 33 TOWNSHIP 06 RANGE 15E 262.31
CLARK, CARROL Prop Addr: 206 HIGHLAND AVE 66419 DENISON (O.T.) , LOTS 72-78 HIGHLAND AVE (EVEN) SECTION 33 TOWNSHIP 07 RANGE 16E 744.58	DEVADER, DOUGLAS W; FUQUA, MARY E Prop Addr: 1001 NEW JERSEY AVE 66436 ELK GROVE ADD. , LOTS 1 & 3 NEW JERSEY AVE SECTION 03 TOWNSHIP 07 RANGE 15E 516.92	SCHEID, RUSSELL; SPIKER, TERESA M Prop Addr: FRONTAGE RD 66436 HOLTON INDUSTRIAL PARK , BEG NE/C SW/4 W217.8 TO POB W70 S300 E70 N300 TO POB 244.35
ELLIS, AMBER D Prop Addr: 304 SECOND ST 66419 DENISON (O.T.) , LOTS 50-56 WESTERN AVE (EVEN) SECTION 33 TOWNSHIP 07 RANGE 16E 285.07	DPJP SERVICES KANSAS, LLC Prop Addr: 722 NEW JERSEY AVE 66436 HOLTON (O.T.) , LOT 96 NEW JERSEY AVE SECTION 03 TOWNSHIP 07 RANGE 15E 505.03	SNYDER, HARPER; SNYDER TATUM P Prop Addr: 915 PENNSYLVANIA AVE 66436 S03 , T07 , R15E , BEG 230N NE/C LOT 111 PENN AVE N70 W187 S70 E187 TO POB 1,513.72
GEORGE, CHARLES V & PENNY KAY Prop Addr: 507 CENTRAL AVE 66419 DENISON (O.T.) , LOTS 151-169 CENTRAL AVE (ODD) ALONG WITH 1/2 ADJ VAC STREET 719.05	EDWARDS, DENNIS J Prop Addr: 620 VERMONT AVE 66436 HOLTON (O.T.) , LOT 82 VERMONT AVE SECTION 03 TOWNSHIP 07 RANGE 15E 150.38	SNYDER, SHARON E Prop Addr: 652 W FOURTH ST 66436 S04 , T07 , R15E , BEG 240E NE INTERSEC FOURTH ST & COLORADO AVE E83.4 E29.1 2,715.61
GREEVE, RICHARD L Prop Addr: 103 SECOND ST 66419 DENISON (O.T.) , E80 FT LOTS 44,46 & 48 CENTRAL AVE SECTION 33 TOWNSHIP 07 RANGE 249.79	EDWARDS, DENNIS JAMES Prop Addr: 415 WISCONSIN AVE 66436 HOLTON (O.T.) , LOT 49 WISCONSIN AVE SECTION 03 TOWNSHIP 07 RANGE 15E 1,102.52	STENGER, GLENDA L & STEVEN J Prop Addr: 415 VERMONT AVE 66436 HOLTON (O.T.) , LOT 49 VERMONT AVE SECTION 03 TOWNSHIP 07 RANGE 15E 795.10
HARDS, GARY R & VIVA M Prop Addr: 506 CENTRAL AVE 66419 DENISON (O.T.) , LOTS 160 THRU 168 EVEN CENTRAL AVE ALONG WITH 1/2 ADJ VAC 369.32	FLOYD, TIMOTHY L & LINDA K Prop Addr: 825 PENNSYLVANIA AVE 66436 HOLTON (O.T.) , LOT 111 PENNSYLVANIA AVE SECTION 03 TOWNSHIP 07 RANGE 15E 906.17	STEWART, RAGINA M Prop Addr: 128 W FIFTH ST 66436 HOLTON (O.T.) , LOT 12 LESS D6.5 OF S60.5 PARK AVE SECTION 03 TOWNSHIP 07 3,191.30
HARRIS, JEFF Prop Addr: 207 HIGHLAND AVE 66419 DENISON (O.T.) , LOTS 75-79 HIGHLAND AVE (ODD) SECTION 33 TOWNSHIP 07 RANGE 16E 130.85	FORD, LORI LYNN Prop Addr: 902 KANSAS AVE 66436 UNIVERSITY ADD. , LOTS 2 & 4 BLK C KANSAS AVE SECTION 04 TOWNSHIP 07 RANGE 1,101.27	TECCHIO, CAROL A & PARISI, MELODY Prop Addr: 425 WISCONSIN AVE 66436 HOLTON (O.T.) , LOTS 53 & 55 WISCONSIN AVE SECTION 03 TOWNSHIP 07 RANGE 15E 1,555.19
HOPKINS, JASON R & KIM E Prop Addr: 302 HIGHLAND AVE 66419 DENISON (O.T.) , LOTS 86-92 HIGHLAND AVE (EVEN) SECTION 33 TOWNSHIP 07 RANGE 16E 1,023.15	GALSTER, LEROY Prop Addr: 522 NEW YORK AVE 66436 HOLTON (O.T.) , S52.5 LOT 68 & N15 LOT 66 NEW YORK AVE SECTION 03 TOWNSHIP 07 781.68	WHEELER, KENT M Prop Addr: 432 COLORADO AVE 66436 FAIRCHILD'S SUB. , LOT 6 SECTION 09 TOWNSHIP 07 RANGE 15E 662.69
HOPKINS, KARI J Prop Addr: 101 HIGHLAND AVE 66419 DENISON (O.T.) , LOTS 29 & 31 HIGHLAND AVE SECTION 33 TOWNSHIP 07 RANGE 16E 387.37	HARRIS, ERIC W Prop Addr: 407 INDIANA AVE 66436 DRAKE & FENN'S SUB. NO 1 , LOT 7 INDIANA AVE SECTION 03 TOWNSHIP 07 RANGE 15E 146.19	WHEELER, KENT M Prop Addr: 303 KANSAS AVE 66436 KELSO'S ADDITION , LOT 27 KANSAS AVE SECTION 09 TOWNSHIP 07 RANGE 15E 505.92
LAMASTUS, RAY & BARBARA K Prop Addr: 202 FOURTH ST 66419 DENISON (O.T.) , LOTS 110-120 HIGHLAND AVE (EVEN) SECTION 33 TOWNSHIP 07 RANGE 696.07	HELLER, JOSEPH WAYNE % HUSKEY, CASEY & DOTY, JAMEY Prop Addr: 709 PENNSYLVANIA AVE 66436 HOLTON (O.T.) , LOT 89 PENNSYLVANIA AVE SECTION 03 TOWNSHIP 07 RANGE 15E 943.39	WINGENDER, PHILLIP J; TR Prop Addr: 517 VERMONT AVE 66436 HOLTON (O.T.) , LOT 65 VERMONT AVE SECTION 03 TOWNSHIP 07 RANGE 15E 1,450.45
LOVELL, LONNIE D & CAROL A Prop Addr: 601 EASTERN AVE 66419 DENISON (O.T.) , LOTS 171-183 EASTERN AVE (ODD) ALONG WITH 1/2 ADJ VAC SIXTH 203.12	HELLER, JOSEPH WAYNE Prop Addr: 425 W SECOND ST 66436 WILSON'S ADDITION , LOTS 10,11 & 12 SECTION 09 TOWNSHIP 07 RANGE 15E 1,061.16	WINGENDER, PHILLIP J; TR Prop Addr: 431 HILLCREST DR 66436 ROSSER ADDITION , W62 LOT 1 BLK 3 & BEG SW/C LOT 1 N100 W18 S100 E18 TO POB 1,568.43
MCGUIRE, VIVIAN GAIL Prop Addr: 407 CENTRAL AVE 66419 DENISON (O.T.) , LOTS 135-139 CENTRAL AVE (ODD) SECTION 33 TOWNSHIP 07 RANGE 675.12	HOAGLAND, JAMES W & NORMA Prop Addr: 901 WASHINGTON AVE 66436 UNIVERSITY ADD. , LOTS 1,3 & 5 BLK K & ADJ N/2 OF VAC NINTH ST SECTION 04 2,284.96	WOLF, CHRISTINA; MARTIN, DARRIN Prop Addr: 325 VERMONT AVE 66436 HOLTON (O.T.) , LOT 41 VERMONT AVE SECTION 10 TOWNSHIP 07 RANGE 15E 1,129.87
MONTGOMERY, BRIAN D & NICOLE L Prop Addr: 306 CENTRAL AVE 66419 DENISON (O.T.) , LOTS 100-108 CENTRAL AVE (EVEN) SECTION 33 TOWNSHIP 07 RANGE 433.69	HOPKINS, EVERETT & PATTY Prop Addr: 523 W TENTH ST 66436 UNIVERSITY ADD. , LOTS 36,38 & 40 & VAC ALLEY ADJ & W6 LOTS 37 & 39 SECTION 04 808.68	WOLTJE, JASON D & MELANIE R Prop Addr: 417 COLORADO AVE 66436 S04 , T07 , R15E , BEG 360S SW INTERSEC COLORADO AVE & FIFTH ST W160 S60 E60 S5 1,340.17
ROBERTSON, SHIRLEY M; TR % NELSON, JAMES DAVID & TAMARRA Prop Addr: 301 EASTERN AVE 66419 S33 , T07 , R16E , LOTS 81-89 EASTERN AVE (ODD) 713.60	JEFFERSON, JEFFERY Prop Addr: 206 NEW JERSEY AVE 66436 HOLTON (O.T.) , LOT 18 NEW JERSEY AVE SECTION 10 TOWNSHIP 07 RANGE 15E 236.79	<b>HOYT</b> ANNO, RICKY L & KIMBERLY K Prop Addr: 200 E FOURTH ST 66440 S23 , T09 , R15E , BEG 50E SE/C LOT 36 CENTRAL AVE N160 E158 S160 W160 TO POB 483.88
SIEBERT, SANDRA M % CLINKENBEARD, CALEB Prop Addr: 307 HIGHLAND AVE 66419 DENISON (O.T.) , LOTS 103-109 HIGHLAND AVE (ODD) SECTION 33 TOWNSHIP 07 RANGE 385.97	JOHNSON, RHONDA J Prop Addr: 517 PENNSYLVANIA AVE 66436 HOLTON (O.T.) , S03, T07, R15E, LOT 65 PENNSYLVANIA AVE SECTION 03 TOWNSHIP 07 527.02	BAILEY, KENNETH F & CINDIE LEE Prop Addr: 113 E FOURTH ST 66440 HOYT (O.T.) , E56.67 LOTS 40 & 42 HIGHLAND AVE SECTION 23 TOWNSHIP 09 6,994.32

(continued to page 9)



(HOYT - continued from page 8)

EVANS, CARA L Prop Addr: CENTRAL AVE 66440 HOYT (O.T.) , LOTS 3 & 4 CENTRAL AVE & ADJOIN VAC CENTRAL AVE & 1/2 ABAN RR 202.29	<b>SOLDIER</b> ACKERET, JAMES (DECEASED) Prop Addr: JACKSON ST 66540 SOLDIER (O.T.) , LOTS 15,16 & 17 BLK 2 SECTION 09 TOWNSHIP 06 RANGE 13E 28.51	JONES, ROBERT H & BEVERLY C Prop Addr: 235 166TH RD 66422 S24 , T08 , R12E , ACRES 4.5 , BEG 1209.2E NW/4 NW/4 S480.15 E481.06 246.14
HORVATH, PAUL Prop Addr: 206 HIGHLAND AVE 66440 HOYT (O.T.) , LOTS 22 & 24 HIGHLAND AVE SECTION 23 TOWNSHIP 09 RANGE 15E 1,268.56	BOWMAN, BARBARA J Prop Addr: 220 FRIEND ST 66540 JOHNSON'S ADDITION , LOTS 7 THRU 10 BLK 1 SECTION 09 TOWNSHIP 06 RANGE 13E 404.40	MULANAX, GARY D Prop Addr: 158TH RD 66418 S27 , T08 , R13E , ACRES 39.8 , E/2 NW/4 NE/4 & E/2 SW/4 NE/4 LESS RD ROW 112.19
LEWIS, GREGORY R Prop Addr: 608 HIGHLAND AVE 66440 HOYT (O.T.) , LOT 84 HIGHLAND AVE & BEG NW/C LOT 84 N37 E155 S37 W155 TO POB 188.10	BURCH, JACK K; BEAMAN, CAROL L C/O KEATING, DAKOTA Prop Addr: 221 THOMPSON ST 66540 SOLDIER (O.T.) , S09, T06, R13E, LOTS 3 THRU 5 BLK 2 SECTION 09 TOWNSHIP 06 495.73	<b>BANNER</b> EDWARDS, DENNIS J Prop Addr: M RD 66436 S01 , T07 , R14E , ACRES 4.8 , BEG SW/C SW/4 N1597.16 TO POB N344 E633 S344 W633 191.62
LEWIS, GREGORY ROGER Prop Addr: 606 HIGHLAND AVE 66440 HOYT (O.T.) , LOTS 76,78,80 & 82 HIGHLAND AVE SECTION 23 TOWNSHIP 09 1,194.27	KEATING, DAVID & PAULA Prop Addr: 233 THOMPSON ST 66540 SOLDIER (O.T.) , LOTS 7 & 8 BLK 2 SECTION 09 TOWNSHIP 06 RANGE 13E 349.21	MOORE, CLIFFORD C C/O MOORE, TEDDY Prop Addr: 222ND RD 66436 S15 , T07 , R14E , ACRES 10.7 , BEG 259W NE/C NW/4 NE/4 W1065.5 S531.6 E974 NE550 15.67
SCHNACKER, TRACI R Prop Addr: 113 W FOURTH ST 66440 MCKEAGE'S 2ND ADD. , LOT 33 SECTION 23 TOWNSHIP 09 RANGE 15E 2,283.09	KEATING, PAULA G & DAVID B Prop Addr: THOMPSON ST 66540 SOLDIER (O.T.) , S09, T06, R13E, LOTS 6 BLK 2 SECTION 09 TOWNSHIP 06 RANGE 13E 45.57	<b>CEDAR</b> BOSTER, AMY M Prop Addr: 16660 R RD 66509 BROME VALLEY SUBDIVISION , ACRES 4.8 , LOT 3 SECTION 14 TOWNSHIP 08 RANGE 15E 933.73
STEVENS, JANICE M; STEVENS, JOHN M; Prop Addr: 402 ANNETTA AVE 66440 HOYT (O.T.) , LOTS 76,77,78 & S12 LOT 75 ANNETTA AVE SECTION 23 TOWNSHIP 09 RANGE 281.25	KEIFER, KURT G Prop Addr: 327 FRIEND ST 66540 LOGAN & FRIEND'S ADD. , S09, T06, R13E, N/2 LOT 3 BLK 3 LESS RD ROW SECTION 09 215.30	BRILL, LARRY E Prop Addr: 17314 158TH RD 66440 S21, T08, R16E, ACRES 20.3, W/2 E/2 W/2 SE/4 LESS RD ROW 270.77
STEVENS, JANICE M & JOHN M Prop Addr: FOURTH ST 66440 HOYT (O.T.) , LOTS 71,72,73,74 & S13 LOT 75 ANNETTA AVE SECTION 23 TOWNSHIP 09 226.07	MILLER, KENT S Prop Addr: 601 SECOND ST 66540 JOHNSON'S ADDITION , LOTS 1 THRU 6 BLK 1 SECTION 09 TOWNSHIP 06 RANGE 13E 381.12	COLLINS, CONNIE A Prop Addr: 16345 W RD 66419 S21 , T08 , R16E , ACRES 79.4 , S/2 NE/4 LESS RD ROW 1,746.53
THURMAN, LISA R E Prop Addr: 409 MCKEAGE AVE 66440 HOYT (O.T.) , N/2 LOTS 25,27,29,31,33 & 35 FIFTH AVE SECTION 23 TOWNSHIP 09 487.09	MOORE, TEDDY L Prop Addr: 318 FRIEND ST 66540 S09 , T06 , R13E , BEG NW INT FRIEND & MICKELL ST N183 E40 N150 W40 N100 W225 185.50	DAVIDSON, DELBERT & RHONDA Prop Addr: 15596 W RD 66440 S27 , T08 , R16E , ACRES 38.5 , SW/4 NW/4 LESS RD ROW 1,389.45
TRAPHAGEN, EDWARD & MILDRED IRENE Prop Addr: 202 ANNETTA AVE 66440 S.B. LANDIS ADD. , S23, T09, R15E, S/2 LOTS 5 & 7 THIRD ST & LOT 6 & N/2 LOT 8 23.10	SHOCKEY, WILLIAM C Prop Addr: 127 FRANCIS ST 66540 FRANCIS' ADDITION , LOT 11 & E1.5 LOT 12 BLK 6 SECTION 16 TOWNSHIP 06 RANGE 13E 603.50	DAVIDSON, DELBERT & RHONDA Prop Addr: W RD 66440 S27 , T08 , R16E , ACRES 19.0 , BEG NW/C SW/4 W330 E400 TO C/L S CEDAR CRK ALONG 217.92
<b>MAYETTA</b> HITTLE, RANDY LYLE Prop Addr: 201 E JONES ST 66509 LUNGER'S ADDITION , LOTS 26 & 28 JONES ST SECTION 22 TOWNSHIP 08 RANGE 15E 660.10	SHOCKEY, WILLIAM C Prop Addr: SECOND ST 66540 FRANCIS' ADDITION , W48.5 LOT 12 BLK 6 SECTION 16 TOWNSHIP 06 RANGE 13E 44.43	HURD, JAMES L; HURD, KATHERINE MAY; LE Prop Addr: 18366 R4 RD 66509 S02 , T08 , R15E , ACRES 4.9 , BEG NW/C S/2 SE/4 E660 S330 W660 N330 TO POB LESS 392.91
KUONE, CLARENCE E Prop Addr: 207 N FIRST ST 66509 R. WHALEN'S ADD. , LOTS 3 & 5 FIRST ST SECTION 22 TOWNSHIP 08 RANGE 15E 398.62	WATKINS, RICHARD D, SR & SHIRLEY Prop Addr: 424 THIRD ST 66540 LOGAN & FRIEND'S ADD. , LOTS 14,15 & 16 BLK 1 SECTION 09 TOWNSHIP 06 RANGE 13E 51.15	KLOBNAK, RONALD J Prop Addr: 14275 166TH RD 66509 S23 , T08 , R15E , ACRES 8.9 , BEG 989.86W NE/C NE/4 S876.62 E493.03 1,148.68
LUNDIN, JOHN R & PATSY S Prop Addr: 212 E JAMES ST 66509 LUNGER'S ADDITION , LOTS 17,19 & 21 JAMES ST SECTION 22 TOWNSHIP 08 RANGE 900.67	WILHELM, GERALD L; WILHELM, BRANDI Prop Addr: FIRST ST 66540 SOLDIER (O.T.) , N36 S66 LOTS 1,2 & 3 BLK 4 SECTION 16 TOWNSHIP 06 RANGE 13E 12.88	KLOBNAK, RONALD J Prop Addr: 166TH RD 66509 S23 , T08 , R15E , ACRES 10.6 , BEG 989.86W NE/C NE/4 S1316.07 W330.88 16.28
MILLER, WILLIAM B & WENDY Prop Addr: 221 E CLARK ST 66509 S22 , T08 , R15E , BEG 398N SE/C NE/4 W145.4 S87 E145.4 N87 TO POB LESS RD ROW 420.41	<b>WHITING</b> ARCHER, RICHARD & BARBARA Prop Addr: 824 FIFTH ST 66552 WHITING (O.T.) , ACRES 11.8 , BEG 300E NW/C BLK C S372 E165 S264 E680 N636 W84 1,305.05	KLOBNAK, RONALD J Prop Addr: S RD 66509 S23 , T08 , R15E , ACRES 9.1 , BEG NE/C NE/4 W497.94 S875.41 E497.94 N874.19 TO 14.57
MILLER, WILLIAM BATAILLE & WENDY JO Prop Addr: 217 E CLARK ST 66509 S22 , T08 , R15E , BEG 398N & 145.3W SE/C NE/4 W145.3 S174 E145.3 N174 TO POB 538.98	AYLESWORTH, JUNE A Prop Addr: 505 SECOND ST 66552 WHITING (O.T.) , LOTS 17 & 18 BLK 28 SECTION 27 TOWNSHIP 05 RANGE 16E 1,210.19	LEMKE, JASON P Prop Addr: 15244 158TH RD 66509 S19, T08, R16E, ACRES 6.12, S/2 SW/4 LESS BEG 619.3N SW/C SW/4 E348.48 N250 1,228.48
NELSON, CARL F JR; TR Prop Addr: 218 E CLARK ST 66509 SHUMWAY'S ADD. , LOT 3 CLARK ST SECTION 22 TOWNSHIP 08 RANGE 15E 291.90	BELLINGHAUSEN, DALE J Prop Addr: 535 SEARLE ST 66552 WHITING (O.T.) , ACRES 8.2 , BEG NE/C BLK E W430 SW700 TO N LI OF FIFTH ST E 1,229.13	MANSON, TIMOTHY L; CARLISLE, DANNA V Prop Addr: 15288 154TH RD 66509 S30 , T08 , R16E , ACRES 6.0 , BEG 1320S NW/C NW/4 S445.5 E660 N445.5 W660 TO PO 1,311.79
NELSON, CARL F JR & NELSON, CAROL Prop Addr: 124 E MAIN ST 66509 MAYETTA (O.T.) , LOT 29 & W.5 LOT 31 MAIN ST SECTION 22 TOWNSHIP 08 RANGE 15 1,041.59	HENSLEE, RON E & DEBBIE M Prop Addr: 212 SEARLE ST 66552 WHITING (O.T.) , LOT 14 & S5 LOT 15 BLK 20 SECTION 27 TOWNSHIP 05 RANGE 16E 1,149.56	MARTIN, KRIS E & MISTY L Prop Addr: 158TH RD 66440 S27 , T08 , R16E , ACRES 20.9 , E/2 NW/4 NW/4 LESS RD ROW 36.50
NELSON, CARL F JR; TR Prop Addr: 128 E MAIN ST 66509 MAYETTA (O.T.) , E29.5 LOT 31 MAIN ST SECTION 22 TOWNSHIP 08 RANGE 15E 1,441.45	HIGGINS, ALAN W; BRUINGTON, HAL & MARY C/O DUNN, TINA Prop Addr: SEARLE ST 66552 WHITING (O.T.) , E/2 LOTS 1 & 2 BLK 30 SECTION 27 TOWNSHIP 05 RANGE 16E 87.70	MARTIN, KRIS E & MISTY L Prop Addr: 15698 W RD 66440 S27 , T08 , R16E , ACRES 8.9 , SW/4 NW/4 NW/4 LESS RD ROW 119.85
NELSON, CAROL J Prop Addr: 121 E MAIN ST 66509 MAYETTA (O.T.) , LOTS 24 & 26 MAIN ST SECTION 22 TOWNSHIP 08 RANGE 15E 895.21	LUDLOW, PAUL & JAIME Prop Addr: 415 WHITING ST 66552 WHITING (O.T.) , LOTS 6 THRU 9 BLK 4 SECTION 27 TOWNSHIP 05 RANGE 16E 1,194.21	NELSON, CAROL J Prop Addr: 182ND RD 66509 S03 , T08 , R15E , ACRES 78.8 , E74.25 AC SW/4 LESS RD ROW 307.05
SHARP, LAURA Prop Addr: 205 N FIRST ST 66509 R. WHALEN'S ADD. , LOT 1 FIRST ST & STRIP OF LAND ADJOINING LOTS 5,7,9 JONES 879.94	MARTIN, EVA D C/O KLEPPIN, DOLLY R Prop Addr: 426 WHITING ST 66552 WHITING (O.T.) , LOTS 15 & 16 BLK 3 SECTION 27 TOWNSHIP 05 RANGE 16E 1,097.28	NELSON, CAROL J Prop Addr: ROCK ISLAND RD 66509 ROCK ISLAND PLACE, S26, T08, R15E, ACRES 0.53, N/2 LOT 7 SECTION 26 TOWNSHIP 08 90.14
<b>NETAWAKA</b> BELL, ALVIN JR & SHIRLEY A & WILLITS, RICHARD & DENISE Prop Addr: 421 WHITE WAY ST 66516 NETAWAKA (O.T.) , LOTS 6 & 7 BLK 3 SECTION 22 TOWNSHIP 05 RANGE 15E 538.86	OLBERDING, ROBERTA C Prop Addr: 325 SEARLE ST 66552 WHITING (O.T.) , LOT 6 & N15 LOT 7 BLK 8 SECTION 27 TOWNSHIP 05 RANGE 16E 233.16	NELSON, CAROL J Prop Addr: ROCK ISLAND RD 66509 ROCK ISLAND PLACE, S26, T08, R15E, ACRES 0.2, N/2 LOT 7 SECTION 26 TOWNSHIP 08 21.68
D&S HOMES LLP Prop Addr: 518 PARK ROW ST 66516 NETAWAKA (O.T.) , W85 LOTS 1 & 2 BLK 6 SECTION 22 TOWNSHIP 05 RANGE 15E 971.12	PROFFITT, TROY Prop Addr: SEARLE ST 66552 WHITING (O.T.) , LOT 8 BLK 19 SECTION 27 TOWNSHIP 05 RANGE 16E 20.05	POTTS, RICHARD WILL & ESTHER MARIE Prop Addr: R4 RD 66509 S11 , T08 , R15E , ACRES 8.6 , BEG NW/C NE/4 S662.08 TO POB E1343.8 S282.83 29.64
EDWARDS, JEREMY L Prop Addr: 415 CHURCH ST 66516 RAILROAD ADD.(NETAWAKA) , LOTS 4,5 & N/2 LOT 3 BLK 19 SECTION 22 TOWNSHIP 05 581.59	SNAVELY, RICHARD A & MELITA A; & PROFFITT, TROY & TONYA Prop Addr: 301 SECOND ST 66552 S27 , T05 , R16E , BEG 275W NE/C BLK R W128 S225 E128 N225 TO POB 872.88	PURDY, THEODORE J II & TINA K Prop Addr: 16295 Q6 RD 66509 S22 , T08 , R15E , ACRES 2.8 , BEG 566.2N & 20W SE/C W/2 NE/4 N150 W820.35 783.62
EDWARDS, LOREN & ROBYN Prop Addr: 425 CHURCH ST 66516 RAILROAD ADD.(NETAWAKA) , LOTS 6 & 7 BLK 19 SECTION 22 TOWNSHIP 05 RANGE 15E 472.79	TRAXLER, RICHARD D & JENNIFER L Prop Addr: POMEROY ST 66552 WHITING (O.T.) , S27, T05, R16E, ACRES 0.31, LOTS 10 & 11 BLK 11 SECTION 27 .95	ROEDIGER, LESLIE W Prop Addr: 15823 R RD 66509 S22 , T08 , R15E , BEG 280W & 50N SE/C SE/4 N480 SE550 SW47.1 W208.4 TO POB 224.67
EICHELBERGER, PATTY Prop Addr: 516 SUPERIOR ST 66516 RAILROAD ADD.(NETAWAKA) , S105 LOTS 1,2 & 3 BLK 8 SECTION 22 TOWNSHIP 05 RANGE 780.62	TRAXLER, RICHARD D & JENNIFER L Prop Addr: 310 PRATT ST 66552 WHITING (O.T.) , S27, T05, R16E, LOTS 20 & 21 BLK 11 SECTION 27 TOWNSHIP 05 RANGE 785.83	SCOFIELD, DAVID L & CONNIE L Prop Addr: 13543 190TH RD 66509 S03 , T08 , R15E , ACRES 16.7 , BEG NE/C W530 S1348.7 E542 S1354.95 TO POB LESS 1,446.42
HOWLAND, JAMES E & CAROL J Prop Addr: 405 KANSAS ST 66516 NETAWAKA (O.T.) , LOTS 11,12,13 BLK 4 SECTION 22 TOWNSHIP 05 RANGE 15E 852.12	VALENZUELA, CHRIS Prop Addr: 312 THIRD ST 66552 WHITING (O.T.) , ACRES 0.5 , BEG SW/C BLK 34 N238 E97 S216 W118 TO POB SECTION 148.35	SMITH, STEVEN Prop Addr: 16455 166TH RD 66509 S20, T08, R16E, ACRES 6.88, BEG 2121.06W NE/C NE/4 S881.24 W349.02 N881.21 1,601.86
MORFITT, TED JR & BARB Prop Addr: 310 SUPERIOR ST 66516 RAILROAD ADD.(NETAWAKA) , LOTS 9 & 10 BLK 17 SECTION 22 TOWNSHIP 05 RANGE 15E 73.27	WILLIAMS, TODD E; WILLIAMS, DALE C Prop Addr: 108 WHITING ST 66552 WHITING (O.T.) , LOTS 8 & 9 BLK 26 SECTION 27 TOWNSHIP 05 RANGE 16E 290.04	SMITH, WALTER R & JULIE A Prop Addr: 16325 R RD 66509 S22 , T08 , R15E , BEG 802N SE/C NE/4 N208.7 W208.7 S208.7 E208.7 TO POB LESS 1,544.69
MORFITT, TED R JR & BARBARA A Prop Addr: CHURCH ST 66516 NETAWAKA (O.T.) , LOTS 11,12 & W12 OF LOT 13 BLK 2 SECTION 22 TOWNSHIP 05 48.84	<b>ADRIAN</b> HLADKY, SHAWN Prop Addr: 178TH RD 66422 S12 , T08 , R12E , ACRES 77.8 , N/2 SW/4 LESS RD ROW 541.34	STOVALL, SHANNON Prop Addr: 17975 W RD 66509 S09 , T08 , R16E , ACRES 7.5 , BEG NE/C SE/4 NE/4 S264 W1320 N264 E1320 TO POB 248.89
MORFITT, TED R JR & BARBARA Prop Addr: DEANE ST 66516 NETAWAKA (O.T.) , S22, T05, R15E, ACRES 3.8, BEG 228.08N SE/C NW/4 W619.5 N267 5.77	HLADKY, SHAWN Prop Addr: 178TH RD 66422 S12 , T08 , R12E , ACRES 39.0 , SW/4 NE/4 LESS RD ROW 179.47	THOMPSON, ADRIENNE & WILLIAM Prop Addr: 16360 Q6 RD 66509 S22 , T08 , R15E , ACRES 1.0 , BEG 1022N & 20E SW/C SE/4 NE/4 E265.21 N164 233.23
MULLINS, TRAVIS J Prop Addr: 435 CHURCH ST 66516 RAILROAD ADD.(NETAWAKA) , LOTS 8,9 & 10 BLK 19 SECTION 22 TOWNSHIP 05 RANGE 15E 523.71	HLADKY, SHAWN Prop Addr: 166TH RD 66422 S13 , T08 , R12E , ACRES 75.3 , S/2 SW/4 LESS BEG 1209.2E SW/C SW/4 E336.7 1,078.12	WATHEN, KERRY S JR & PAULA L Prop Addr: 13737 162ND RD 66509 S23 , T08 , R15E , ACRES 11.5 , BEG 628E NW/C SW/4 S956 E552 N956 W552 TO POB 1,297.38
RODRIGUEZ, PATRICIA D Prop Addr: 414 COMMERCIAL ST 66516 NETAWAKA (O.T.) , E26 LOT 16 & W20 LOT 17 BLK 7 SECTION 22 TOWNSHIP 05 RANGE 175.87	HLADKY, SHAWN Prop Addr: 166TH RD 66422 S24 , T08 , R12E , ACRES 72.8 , N/2 NW/4 LESS RD ROW & LESS N242 OF W180 & LESS 1,295.17	WHEELER, FREIDA G Prop Addr: 16615 S RD 66509 S14 , T08 , R15E , ACRES 4.5 , S/2 SE/4 SE/4 SE/4 LESS RD ROW 445.12
SMITH, CHARLES & ANGELA Prop Addr: 430 MAIN ST 66516 RAILROAD ADD.(NETAWAKA) , LOT 6 & W66 LOT 7 BLK 14 SECTION 22 TOWNSHIP 05 318.62	JONES, ROBERT H & BEVERLY C Prop Addr: 166TH RD 66422 S13 , T08 , R12E , ACRES 2.5 , BEG 1209.2E SW/C SW/4 E336.07 N403.76 58.27	WOHLER, CRAIG M Prop Addr: 15554 178TH RD 66509 S07, T08, R16E, ACRES 32.28, COMM W/C E1307.87 TO POB N363.02 N995.49 E704.51 3,114.33

(continued to page 10)



(Continued from page 9)

**DOUGLAS**  
 BAILEY, JAMES M & TINA M  
 Prop Addr: 15112 142ND RD 66509  
 S36, T08, R15E, ACRES 20.0, BEG SE/C  
 SE/4 N439.4 W683 N494.6 W644.5 S939.55  
 3,300.13

COCHRAN, CLARENCE D  
 Prop Addr: 10762 T RD 66440  
 S30, T09, R16E, ACRES 2.4, BEG 165S  
 NW/C S/2 NW/4 E660 S165 W660 N165 TO PO  
 1,376.05

CUMMINGS SR, MARVIN H  
 Prop Addr: 13027 134TH RD 66440  
 S10, T09, R15E, ACRES 3.41, BEG NE/C OF  
 NW/4 W647 TO POB S25798 W637.62 N258.15  
 1,522.53

CUMMINGS, NICHOLAS & JACKIE  
 Prop Addr: V RD 66512  
 S02, T09, R16E, ACRES 34.0, BEG SE/C  
 SE/4 W373.3 N467.8 W241.1 N TO N LINE  
 57.70

DUGAN, DAVID L & CHERYL L  
 Prop Addr: 9410 T4 RD 66440  
 S31, T09, R16E, ACRES 2.6, BEG 255E  
 SW/C SE/4 N512.47 W255 S512.47 E255 TO  
 2,835.60

ENSLEY, KENT T & MICHELLE  
 Prop Addr: 10225 T4 RD 66440  
 S30, T09, R16E, ACRES 3.0, BEG SE/C  
 SW/4 N183 W155 SW627 S145 E782 TO POB  
 1,739.62

FILBERT, MELINDA JANE & AARON DAVID  
 Prop Addr: 10927 US-75 HWY 66440  
 S27, T09, R15E, ACRES 3.2, BEG 490S  
 & 81.7W NE/C NE/4 W351.3 N402.5 E311.8  
 1,130.88

FUQUA, JACK M & BETTY J; TR  
 Prop Addr: 142ND RD 66509  
 S02, T09, R15E, ACRES 4.98, COM NW/C  
 NE/4 E964.03 BEG S29 SW353.62 SW391.05  
 96.29

GRAY, STEVEN MELVILLE  
 Prop Addr: 17399 126TH RD 66440  
 S16, T09, R16E, ACRES 5.4, BEG 1980W  
 NE/C NE/4 E705 S410 NW710 N240 TO POB  
 478.98

GREENWOOD, DELIA A & JACKSON, ANGELA M  
 Prop Addr: 14775 US-75 HWY 66509  
 S34, T08, R15E, ACRES 4.2, N/2 S/2  
 NE/4 LESS W33 AC LESS RD ROW & LESS BEG  
 502.05

GUDENKAUF, AMY & JARED; MEACHAM, DENNIS  
 Prop Addr: X RD 66512  
 S26, T09, R16E, ACRES 10.9, S10.33 AC OF  
 N/2 W/2 SW/4 LYING EAST OF PUBLIC RD  
 40.51

GUFFEY, MARGARET L; TR % KEVIN GUFFEY  
 Prop Addr: X RD 66512  
 S35, T09, R16E, ACRES 311.8, W/2  
 LESS RD ROW LESS BEG 1960.89N SW/C SW/4  
 2,240.79

HEIDEMAN, MARK J Prop Addr: 10477 Y RD 66512  
 S26, T09, R16E, ACRES 4.8, BEG SE/C  
 NE/4 SE/4 W580.8 N375 E580.8 S375 TO PO  
 1,008.79

HILL, LOREN G  
 Prop Addr: 13314 134TH RD 66440  
 S03, T09, R15E, ACRES 4.8, BEG 1996W  
 SE/C SE/4 N521.775 E417.42 S521.775  
 654.18

HOLTHAUS, STEVEN E & CONNIE S  
 Prop Addr: U RD 66509  
 S31, T08, R16E, ACRES 10.4, N/2 NE/4  
 LESS RD ROW & LESS BEG NE/C NE/4 W311  
 216.48

HOLTHAUS, STEVEN E & CONNIE S  
 Prop Addr: U RD 66509  
 S31, T08, R16E, ACRES 58.4, BEG NW/C  
 NE/4 E1860 SW807.68 E669.83 S33.52  
 1,117.96

HOLTHAUS, STEVEN E & CONNIE S  
 Prop Addr: U RD 66509  
 S31, T08, R16E, ACRES 73.0, S/2 NE/4  
 LESS RD ROW LESS BEG SE/C NE/4 2660  
 1,351.82

HRENCHIR, EDWARD L  
 Prop Addr: 10388 S RD 66440  
 HRENCHIR 1ST ADD., ACRES 10.0, N/2 N/2  
 SW/4 AKA TRACT NO 6 SECTION 25 TOWNSHIP  
 773.97

HRENCHIR, EDWARD L & HILDA T  
 Prop Addr: 9779 S RD 66440  
 S35, T09, R15E, ACRES 39.73, NE/4 SE/4  
 LESS RD ROW  
 888.60

HUMES, CAROL J & DAVID E  
 Prop Addr: 9695 T RD 66440  
 S36, T09, R15E, ACRES 20.1, N/2 S/2  
 N/2 SE/4 LESS RD ROW  
 1,552.37

KNIGHT, VALERIE  
 Prop Addr: 15668 SE INDIAN VALLEY LN 66440  
 S30, T09, R16E, ACRES 2.7, BEG 1289N  
 & 440E SW/C NE/4 N530 NW182 E70 SE250 TO  
 773.48

MASSEY, TONI L Prop Addr: T4 RD 66440  
 S30, T09, R16E, ACRES 6.4, S330 OF  
 E1320 SW/4 LESS BEG SE/C SW/4 N183 W155  
 20.30

MASSEY, TONI L Prop Addr: 10237 T4 RD 66440  
 S31, T09, R16E, ACRES 31.9, BEG 725W  
 NE/C NW/4 W825 S660 W166 S660 E1363 N37  
 1,473.15

MCCLURG, MARJORIE A, JOHN MICHAEL,  
 Prop Addr: Y RD 66512  
 S35, T09, R16E, ACRES 36.3, NE/4  
 NE/4 LESS BEG S332 NE/C NW/4 S200 W660  
 234.28

MCCOLLUM, MACKS W & ALICIA  
 Prop Addr: 16670 98TH RD 66440  
 S32, T09, R16E, ACRES 19.9, BEG  
 1014.84W SE/C NE/4 W338.28 N263.47 W248  
 1,355.14

NELSON, CARL F JR; TR  
 Prop Addr: 14351 S RD 66509  
 S35, T08, R15E, ACRES 78.3, E/2 SE/4  
 LESS BEG SW/C E/2 SE/4 E108 N300 W108  
 2,611.43

NELSON, CARL F JR; TR  
 Prop Addr: S RD 66509  
 S36, T08, R15E, ACRES 78.2, W/2 SW/4  
 LESS RD ROW  
 246.91

NELSON, CAROL J  
 Prop Addr: 126TH RD 66440  
 S13, T09, R15E, ACRES 71.14, W/2 NE/4  
 LESS RD ROW LESS BEG AT NE/C OF W/2 OF  
 346.77

NEUNER, BENNY J  
 Prop Addr: 11014 T RD 66440  
 S19, T09, R16E, ACRES 3.4, BEG SW/C  
 SW/4 N325 E536 S325 W536 TO POB LESS RD  
 885.61

POORT, MARK A  
 Prop Addr: 17435 126TH RD 66440  
 S16, T09, R16E, ACRES 4.9, BEG 45E  
 NW/C NE/4 NE/4 E219 SE514 S120 W440 N60  
 1,038.07

REECE, PHYLLIS KAY  
 Prop Addr: 14655 U RD 66509  
 S31, T08, R16E, ACRES 8.5, BEG SE/C  
 NE/4 W660 NE478.46 E45 NE249.99 SE456.4  
 2,109.40

RIBELIN, BRYAN N  
 Prop Addr: 13855 142ND RD 66509  
 S02, T09, R15E, ACRES 66.64, E/2 NW/4  
 LESS RD ROW & LESS BEG NE/C E/2 NW/4  
 1,645.14

RODMAN, DOROTHY H  
 Prop Addr: 10473 U4 RD 66440  
 S29, T09, R16E, ACRES 5.6, BEG  
 211.6S NE/C N23 AC OF S75 AC E/2 SW/4  
 577.43

ROGERS, JOYCE & JOHN; SACKRIDER, ROLAND  
 Prop Addr: 9989 S RD 66440  
 S35, T09, R15E, ACRES 2.6, BEG 1240N  
 SE/C SE/4 W400 S250 W234.99 N343 E634.99  
 820.07

ROSEVELT, ROBERT W  
 Prop Addr: US-75 HWY 66440  
 S14, T09, R15E, ACRES 8.2, BEG  
 1320.64S & 294E NW/C SW/4 E1120 N330.37  
 28.11

SCHROEDER, LOYD D  
 Prop Addr: 11646 US-75 HWY 66440  
 S23, T09, R15E, ACRES 5.6, BEG  
 1313.11S & 308.5E NW/C NW/4 N114.13  
 2,515.85

SCHWEIGEN, HARDIE M JR & JANICE S  
 Prop Addr: 10195 S RD 66440  
 S35, T09, R15E, ACRES 5.3, BEG NE/C  
 NE/4 W316.8 S825 E316.8 N825 TO POB LESS  
 362.78

SHAW, ROBERT JOHN  
 Prop Addr: 11090 P4 RD 66440  
 NORTH TOPEKA BABY FARMS, ACRES 5.9,  
 FARM 10D LESS RD ROW SECTION 21 TOWNSHIP  
 657.93

STREETER, BETTY  
 Prop Addr: 15601 142ND RD 66509  
 S06, T09, R16E, ACRES 4.7, BEG NW/C  
 NE/4 E485 S449.07 W485 N449.07 TO POB  
 440.80

STUMBAUGH, ROBIN R & RALPH W IV  
 Prop Addr: 12658 S RD 66440  
 S12, T09, R15E, ACRES 14.6, BEG 290N  
 SW/C SW/4 E648.4 N1020.44 W648 S1020 TO  
 1,774.08

THOMASSON, MARY; BROWN, JON E C  
 Prop Addr: 9915 T4 RD 66440  
 S31, T09, R16E, ACRES 4.8, BEG 432N  
 SE/C NW/4 N408 W534 S408 E534 TO POB  
 1,377.84

WEDDLE, PAXTON  
 Prop Addr: 14700 126TH RD 66440  
 S12, T09, R15E, ACRES 2.9, BEG SE/C  
 SW/4 W210 N623 E210 S623 TO POB LESS RD  
 456.73

WHEELER, GARRY LEE & JOAN ELAINE  
 Prop Addr: 16257 105TH LN 66440  
 S29, T09, R16E, ACRES 10.1, BEG NW/C  
 N23 AC OF S75 AC E/2 SW/4 S759.9 E570  
 1,044.85

**FRANKLIN**  
 ADCOCK, CHADWICK T & MARCIE L  
 Prop Addr: 11710 234TH LN 66436  
 DEER RUN SUBDIVISION, ACRES 3.4, LOT 4  
 SECTION 05 TOWNSHIP 07 RANGE 15E  
 3,083.60

ALLEN, STEVE & ALETA  
 Prop Addr: US-75 HWY 66436  
 S21, T07, R15E, ACRES 19.1, BEG  
 63.5W NE/C SW/4 W1246.64 S700 E1233.35  
 56.25

ALLEN, STEVEN D & ALETA K  
 Prop Addr: 20902 P RD 66436  
 S21, T07, R15E, ACRES 9.9, BEG NW/C  
 SW/4 S350 TO POB E1325 S350 W1325 N350  
 2,154.33

ALLEN, STEVEN D & ALETA K  
 Prop Addr: P RD 66436  
 S21, T07, R15E, ACRES 9.8, BEG NW/C  
 SW/4 E1325 S350 W1325 N350 TO POB LESS  
 44.17

BICKFORD, MICHAEL F & MILLIE C  
 Prop Addr: 22250 P RD 66436  
 S09, T07, R15E, ACRES 2.8, BEG SW/C  
 SW/4 N360 E348.7 S171.73 E27.33 S188.4  
 1,583.75

BROCKMAN, BARBARA A  
 Prop Addr: 23121 O RD 66436  
 S06, T07, R15E, ACRES 0.9, BEG 775N  
 SE/C E/2 SE/4 W210 N200 E210 S200 TO PO  
 1,068.17

LADUSCH, LLOYD G  
 Prop Addr: 21469 S4 RD 66436  
 S13, T07, R15E, ACRES 0.8, BEG 400N  
 SE/C SW/4 W200 N200 E200 S200 TO POB  
 264.15

MARTIN, KYLE J  
 Prop Addr: 15096 198TH RD 66509  
 S25, T07, R15E, ACRES 37.0, SE/4  
 SE/4 LESS BEG NE/C SE/4 SE/4 W440 SE480  
 1,550.34

MONTGOMERY, NOEL R & MEGAN L  
 Prop Addr: VERMONT AVE 66436  
 S10, T07, R15E, ACRES 8.3, BEG 785S  
 S ROW FIRST ST ON EXTENDED C/L NEW  
 30.05

MOORE, CLIFFORD C C/O MOORE, TEDDY  
 Prop Addr: 516 E EIGHTH ST 66436  
 S03, T07, R15E, BEG 109.5N NW/C LOT  
 39 MINNESOTA AVE NE890 TO C/L ABAN RR  
 19.82

MORRIS, BRETT S & KATRINA L  
 Prop Addr: R4 RD 66436  
 S23, T07, R15E, ACRES 51.85, NE/4 LESS  
 BEG 251W NE/C NE/4 S33 SW483.21 S196.97  
 1,430.83

MORRIS, BRETT S & KATRINA L  
 Prop Addr: 206TH RD 66436  
 S26, T07, R15E, ACRES 97.5, N/2 NW/4  
 & N/2 S/2 NW/4 LESS W660 OF N1320 & LES  
 634.60

SEARLES, JOHN CHRISTOPHER  
 Prop Addr: 15168 222ND RD 66436  
 S12, T07, R15E, ACRES 7.2, BEG SE/C  
 SE/4 N432 W784.87 S432 E784.87 LESS ROW  
 975.53

WRAY, MICHAEL L  
 Prop Addr: 13606 222ND RD 66436  
 S11, T07, R15E, ACRES 12.54, BEG SW/C  
 E418 N1318.04 W441.00 S1318.04 TO POB  
 864.81

**GARFIELD**  
 ALFORD, BRADLEY SCOTT  
 Prop Addr: 19477 V6 RD 66419  
 S33, T07, R16E, ACRES 19.7, BEG 660E  
 & 1320N SW/C NE/4 S811.8 E1072.5 N791.8  
 481.57

BAUMANN, TERRE R & TERRI L  
 Prop Addr: 19927 K-116 HWY 66436  
 S12, T07, R16E, BEG 386W & 50S NE/C  
 NE/4 S100 W120 S16 W177 N116 E297 TO POB  
 286.72

CRANE, MARJORIE % GLEN CUCHY  
 Prop Addr: 19934 K-116 HWY 66436  
 S01, T07, R16E, BEG 386W SE/C SE/4  
 W128 N150 E128 S150 TO POB LESS RD ROW  
 561.95

EVERHART, MICHELLE B; EVERHART, GARY L  
 Prop Addr: 19920 X RD 66436  
 S26, T07, R16E, ACRES 7.9, BEG SW/C  
 SW/4 N882.6 E426 S882.6 W426 TO POB LESS  
 200.88

HARDS, VIVA MARIE & GARY  
 Prop Addr: 19575 W RD 66419  
 S33, T07, R16E, ACRES 7.1, BEG 610N  
 SE/C NE/4 N710 W466.12 S710 E466.12 TO  
 317.90

MONTGOMERY, CATHERINE A  
 Prop Addr: W RD 66436  
 S15, T07, R16E, ACRES 79.2, W/2 SW/4  
 LESS RD ROW  
 578.37

SCHIED, RUSSELL  
 Prop Addr: 15682 190TH RD 66509  
 S31, T07, R16E, ACRES 160.4, SE/4  
 LESS RD ROW  
 1,094.86

STEWART, RAGINA M  
 Prop Addr: 17255 198TH RD 66436  
 S33, T07, R16E, ACRES 25.6, BEG NW/C  
 NE/4 S1320 E871.74 N989.8 W46 N330.2  
 325.08

STEWART, RAGINA M  
 Prop Addr: 19727 V6 RD 66419  
 S33, T07, R16E, ACRES 21.7, BEG  
 819.82E NW/C NE/4 E906.76 S850.3 NW417.5  
 765.70

STEWART, RAGINA M  
 Prop Addr: K-16 HWY 66436  
 S33, T07, R16E, ACRES 1.9, BEG  
 343.33N SE/C NW/4 NW485.87 TO CRK NE ON  
 13.08

STEWART, RAGINA M  
 Prop Addr: 19599 V6 RD 66419  
 S33, T07, R16E, ACRES 4.2, BEG 1320S  
 & 1315E NW/C NE/4 E417.5 N469.7 W417.5  
 573.27

**GRANT**  
 NICOL, MITCHELL D  
 Prop Addr: 22837 E RD 66540  
 S09, T07, R13E, ACRES 75.8, N/2 NE/4  
 LESS RD ROW  
 1,568.33

NICOL, MITCHELL D  
 Prop Addr: 22631 E RD 66540  
 S09, T07, R13E, ACRES 78.7, S/2 NE/4  
 LESS RD ROW  
 200.44

OZOOKIE TRUST  
 Prop Addr: 222ND RD 66540  
 S09, T07, R13E, ACRES 156.9, SW/4  
 LESS RD ROW  
 691.03

**JEFFERSON**  
 CATTRELL, LINDA A  
 Prop Addr: 8561 254TH RD 66416  
 S27, T06, R14E, ACRES 18.95, LOT 2  
 CATTRELL ACRES SUB LESS RD ROW  
 840.55

MCASEY, WILLIAM J  
 Prop Addr: 8382 250TH RD 66416  
 S27, T06, R14E, ACRES 3.7, BEG SE/C  
 NW/4 N260 W670.15 S260 E670.15 TO POB  
 1,628.21

MCWILLIAMS, JEANETTE E  
 Prop Addr: 26747 K RD 66416  
 S15, T06, R14E, BEG 1036.92N SW/C  
 NW/4 E284.26 N919.44 W284.26 S919.44 TO  
 145.98

**LIBERTY**  
 CALKINS, LLOYD R  
 Prop Addr: 27784 Q4 RD 66436  
 S10, T06, R15E, ACRES 4.7, BEG 33E  
 NW/C NE/4 S607 E274.36 N346.5 W57.81  
 640.44

HYATT, EVERETT L  
 Prop Addr: 12379 244TH LN 66436  
 S33, T06, R15E, BEG 1373.3N & 24.04W  
 SE/C NW/4 N367.72 W362.67 S367.63  
 1,406.18

SPIKER, TERESA M % SCHEID, RUSSELL  
 Prop Addr: 24171 US-75 HWY 66436  
 S33, T06, R15E, BEG NE/C SW/4 W217.8  
 S300 E217.8 N300 TO POB  
 1,443.53

ZWONITZER PROPANE INC  
 Prop Addr: MEMORY LN 66436  
 S33, T06, R15E, ACRES 1.5, BEG  
 1702.82N & 492.58E SW/C E146.83 S445.01  
 395.45

**LINCOLN**  
 BAILEY, KENNETH F & CINDIE  
 Prop Addr: 9163 134TH RD 66509  
 S11, T09, R14E, ACRES 158.6, NW/4  
 LESS RD ROW  
 2,506.10

BAILEY, KENNETH F & CINDIE  
 Prop Addr: 134TH RD 66509  
 S11, T09, R14E, ACRES 78.16, N/2 NE/4  
 LESS RD ROW  
 248.45

BAILEY, KENNETH F & CYNTHIA L  
 Prop Addr: 126TH RD 66509  
 S12, T09, R14E, ACRES 77.6, S/2 SW/4  
 LESS RD ROW  
 226.94

COMMERCE BANK & TRUST % SCHNACKER, TRACI  
 Prop Addr: N RD 66509  
 S01, T08, R14E, ACRES 78.7, S/2 SE/4  
 LESS RD ROW  
 230.32

JOHNSON, DIANE M  
 Prop Addr: 14710 O RD 66509  
 S32, T08, R15E, ACRES 4.8, BEG 445.32N  
 SW/C NW/4 N196.69 E1156.21 S196.87  
 319.81

NELSON, VICKI  
 Prop Addr: 12440 142ND RD 66509  
 S33, T08, R15E, ACRES 3.6, BEG  
 234.19E SW/C SE/4 N660 E234.19 S660  
 336.57

ROGERS, VERNON & SUZETTE  
 Prop Addr: N RD 66509  
 S06, T09, R15E, ACRES 32.2, SW/4  
 NW/4 LESS RD ROW  
 155.61

ROGERS, VERNON & SUZETTE  
 Prop Addr: N RD 66509  
 S06, T09, R15E, ACRES 74.8, N/2 SW/4  
 LESS RD ROW  
 290.88

ROGERS, VERNON LEE & SUZETTE  
 Prop Addr: 12742 134TH RD 66440  
 S04, T09, R15E, ACRES 5.1, BEG 290W  
 SE/C SE/4 W310 N730 E310 S730 TO POB  
 2,549.46

ROGERS, VERNON LEE & SUZETTE  
 Prop Addr: Q RD 66440  
 S04, T09, R15E, ACRES 33.5, SE/4  
 SE/4 LESS BEG 290W SE/C SE/4 W310 N730  
 111.08

SCHIEVELBEIN, PATRICIA A  
 Prop Addr: 11875 O RD 66509  
 S18, T09, R15E, ACRES 39.1, SE/4  
 SE/4 LESS RD ROW  
 1,616.50

SECHRIST, BERT R  
 Prop Addr: O4 RD 66509  
 S05, T08, R15E, ACRES 40.8, NW/2  
 SE/4 (1/12 INTEREST)  
 12.21

(continued to page 11)



SECHRIST, BERT R Prop Addr: H RD 66418  
S01, T08, R13E, ACRES 77.7, E/2 SE/4  
(1/12 INTEREST IN U.S.A. TRUST LAND) 20.95

SEYMOUR, SHIRLENE  
Prop Addr: 9593 150TH RD 66509  
S35, T08, R14E, ACRES 2.0, BEG NE/C  
NE/4 W290.42 S340.03 E275.59 N345.15 TO  
1,722.01

STARKS, RICHARD L  
Prop Addr: 7593 124TH RD 66418  
S16, T09, R14E, ACRES 10.0, BEG  
3036.26W SE/C N/2 N/2 N649.63 SE460.11  
393.14

THOMPSON, LAURA C & JIMMY S  
Prop Addr: 17980 N RD 66509  
S07, T08, R15E, ACRES 7.6, W535 FT  
N/2 SW/4 NW/4 LESS RD ROW 1,580.72

WHITEMAN, STEPHEN G & LINDA  
Prop Addr: 15074 M RD 66509  
S25, T08, R14E, ACRES 38.3, SW/4  
SW/4 LESS RD ROW 110.60

**NETAWAKA**

HERD, DARREL J  
Prop Addr: 31830 N RD 66550  
S07, T05, R15E, ACRES 5.5, BEG SW/C  
SW/4 E537.5 N462.81 WLY537.18 S446.7 TO  
719.47

PETERSEN, LONNIE R; KIDWELL, KIMBERLY K;  
Prop Addr: 32481 R RD 66516  
S10, T05, R15E, ACRES 1.2, BEG  
581.96S NE/C NE/4 W280.66 SW81.87 396.60

SCHUMANN, BRADLEY D & CHASTITY  
Prop Addr: 29498 R RD 66516  
S26, T05, R15E, ACRES 3.9, BEG  
1674.35S NW/C SW/4 E397.7 S461.66  
2,220.43

**SOLDIER**

BOTTOM, LLOYD; BOTTOM, TONY L  
Prop Addr: 280 246TH RD 66432  
S25, T06, R12E, ACRES 4.12, BEG SW/C  
SW/4 E1516.23 TO POB N354.51 E509.87  
158.32

HUGHES, GEORGE L & MARYANN E  
Prop Addr: A4 RD 66540  
S01, T06, R12E, ACRES 5.9, BEG 528W  
SE/C NW/4 N660 W396 S660 E396 TO POB  
2.84

HUGHES, MARYANN Prop Addr: 286TH RD 66540  
S01, T06, R12E, ACRES 26.4, BEG NE/C  
NW/4 S903 W1320 N903 E1320 TO POB LESS  
311.45

JONES, CRAIG DAVIS  
Prop Addr: 27704 K-62 HWY 66540  
S09, T06, R13E, ACRES 3.8, BEG 132W  
NE/C NE/4 W264 S742.5 E264 NE742.5 TO  
567.89

MCASEY, WILLIAM J Prop Addr: G RD 66540  
S35, T06, R13E, ACRES 75.0, E/2 SE/4  
LESS BEG N385 SE/C SE/4 W400 N326.7 E400  
304.41

NIEHUES, ERIC E & ASHLEY R  
Prop Addr: G RD 66540  
S13, T06, R13E, ACRES 75.8, W/2 SW/4  
LESS RD ROW 1,590.03

**ST CREEK**

CALL, SHANE A; KATHRENS, LARRY G & RAE D  
Prop Addr: 24804 W RD 66436  
S27, T06, R16E, BEG SW/C N/2 SW/4  
N164.66 E264.55 S164.66 W264.55 N25.62  
364.74

MORRIS, BRETT S  
Prop Addr: 24615 X RD 66436  
S27, T06, R16E, ACRES 38.4, SE/4  
SE/4 LESS RD ROW 1,584.05

**WASHINGTON**

BAILEY, KENNETH F & CYNTHIA LEA  
Prop Addr: 11680 K RD 66418  
S22, T09, R14E, ACRES 79.8, N/2 NW/4  
LESS RD ROW 4,512.69

BAILEY, KENNETH F & CYNTHIA  
Prop Addr: 110TH RD 66509  
S25, T09, R14E, ACRES 146.97, NE/4 LESS  
RD ROW LESS BEG NE/C NE/4 S660 W660 N66  
2,338.72

BAILEY, SAMUEL D  
Prop Addr: 9553 I RD 66539  
S31, T09, R14E, ACRES 11.77, BEG 3768S  
NE/C NE/4 W TO C/L SOLDIER CRK SE ALONG  
268.44

BAWDEN, CLARA B; TR & GAY, JERRY  
Prop Addr: 4137 102ND RD 66418  
S35, T09, R13E, ACRES 4.7, BEG 291W  
NE/C W/2 NW/4 W660 S330 E660 N330 TO PO  
1,402.89

HOLTON RECORDER, MONDAY, AUG. 14, 2017, PAGE 11

BONE, RONALD L & LINDA M  
Prop Addr: 102ND RD 66509  
S25, T09, R14E, ACRES 19.52, S/2 OF S/2  
OF W/2 OF SE/4 LESS RD ROW 137.33

MELECHINSKY, GARY A & REBECCA A  
Prop Addr: 11590 E RD 66418  
S22, T09, R13E, ACRES 4.8, BEG NW/C  
S/2 NW/4 E435 S500.69 W435 N500.69 TO  
1,105.71

POSCH, LARRY J Prop Addr: 10395 G RD 66418  
S26, T09, R13E, ACRES 4.4, BEG SE/C  
SE/4 N1070.8 TO POB W420.37 SW59.93  
365.99

REZAC, DAVID JOSEPH & DARLENE  
Prop Addr: 10135 J RD 66539  
S32, T09, R14E, ACRES 5.3, BEG  
1671.42N SE/C NE/4 W593.22 N367 E593.22  
757.96

SHERBECK, ALVIN  
Prop Addr: 6600 94TH RD 66539  
S32, T09, R14E, ACRES 11.23, E/2 SW/4  
LESS BEG AT SE/C OF E/2 W1208.34  
2,535.29

STRAUS, TIM  
Prop Addr: 2830 102ND RD 66418  
S28, T09, R13E, ACRES 2.7, BEG SW/C  
SE/4 E371 N253 NW166.6 W253 S371 TO POB  
187.29

**WHITING**

BELLINGHAUSEN, DALE J  
Prop Addr: W4 RD 66552  
S22, T05, R16E, ACRES 20.5, BEG 740W  
SE/C SW/4 W480 TO RR ROW NELY TO E LINE  
104.91

WINGENDER, JOANN & BARBARA PARKER  
Prop Addr: 31418 T RD 66516  
S18, T05, R16E, ACRES 4.7, BEG  
997.38 N OF SW/C W/2 SW/4 E341.49  
222.31

WINGENDER, PHILLIP J; TR  
Prop Addr: 30831 V RD 66552  
S20, T05, R16E, ACRES 158.8, NE/4  
LESS RD ROW 1,554.97

WINGENDER, PHILLIP J; TR  
Prop Addr: V RD 66552  
S20, T05, R16E, ACRES 78.1, N/2 SE/4  
LESS RD ROW 2,172.11

ML63T3

# Public Notice

# Public Notice

(Published in The Holton Recorder, Holton, Kan., on Monday, Aug. 14, 2017.)

## The governing body of USD 335-Jackson Heights

NOTICE OF HEARING 2017-2018 BUDGET USD# 335

The governing body of Unified School District 335 will meet on the 24th day of August, 2017 at 7:00 PM, at 12719 266th Road, Holton, KS for the purpose of hearing and answering objections of taxpayers relating to the proposed use of all funds and the amount of tax to be levied. Detailed budget information (including budget profile) is available at district office and will be available at this hearing.

The Amount of 2017 Tax to be Levied and Expenditures (published below) establish the maximum limits of the 2017-2018 Budget. The "Est. Tax Rate" in the far right column, shown for comparative purposes, is subject to slight change depending on final assessed valuation.

Code Line	2015-2016 Actual		2016-2017 Actual		PROPOSED BUDGET 2017-2018			
	Actual Expenditures (1)	Actual Tax Rate* (2)	Actual Expenditures (3)	Actual Tax Rate* (4)	Expenditures (5)	Amount of 2017 Tax to be Levied (6)	Est. Tax Rate* (7)	
OPERATING								
General	06	3,890,464	20,000	3,246,666	20,000	3,039,753	416,819	20,000
Supplemental General (LOB)	08	1,035,405	19.618	1,035,405	19.851	1,010,578	435,088	19.169
SPECIAL REVENUE								
Adult Education	10	0	0.000	0	0.000	0	0	0.000
Adult Supplemental Education	12	0		0		0		
Bilingual Education	14	0		0		0		
Virtual Education	15	0		0		0		
Capital Outlay	16	103,555	5.000	202,276	4.800	886,743	119,162	5.250
Driver Training	18	5,157		4,108		24,082		
Extraordinary School Program	22	0		0		0		
Food Service	24	242,848		237,744		363,633		
Professional Development	26	9,150		14,240		62,300		
Parent Education Program	28	0		0		14,168		
Summer School	29	0		0		0		
Special Education	30	496,561		502,668		1,227,494		
Career and Postsecondary Education	34	63,477		58,527		194,000		
Special Liability Expense Fund	42	0	0.000	0	0.000	0	0	0.000
School Retirement	44	0	0.000	0	0.000	0	0	0.000
Extraordinary Growth Facilities	45	0	0.000	0	0.000	0	0	0.000
Special Reserve Fund	47	0		0		0		
Federal Funds	07	54,962		58,857		56,947		
Gifts and Grants	35	44,342		21,933		21,155		
At Risk (4Yr Old)	11	0		0		34,036		
Cost of Living	33	0	0.000	0	0.000	0	0	0.000
At Risk (K-12)	13	208,457		219,246		620,599		
Declining Enrollment	19	0	0.000	0	0.000	0	0	0.000
KPERS Special Retirement Contribution	51	179,758		178,221		299,412		
Contingency Reserve	53	0		0		0		
Textbook & Student Material Revolving	55	0		8,653		0		
Activity Fund	56	39,032		34,787		0		
Tuition Reimbursement Fund	57	0		0		0		
DEBT SERVICE								
Bond and Interest #1	62	221,766	8.563	199,390	8.476	236,865	190,666	8.400
COOPERATIVES**								
Special Education	78	0		0		0		
TOTAL USD EXPENDITURES	100	6,594,932	53.181	6,022,721	53.127	8,091,765	1,161,735	52.819
Less: Transfers	105	1,889,135	xxxxxx	1,271,816	xxxxxx	1,037,806	xxxxxx	xxxxxx
NET USD EXPENDITURES	110	4,705,797	xxxxxx	4,750,905	xxxxxx	7,053,959	xxxxxx	xxxxxx
TOTAL USD TAXES LEVIED	115	998,902	xxxxxx	1,064,710	xxxxxx	1,161,735	xxxxxx	xxxxxx
TOTAL TAXES LEVIED	125	998,902		1,064,710		1,161,735		
Assessed Valuation - General Fund	128	\$17,644,212		\$18,877,986		\$20,840,950		
Assessed Valuation - All Other Funds	130	\$19,485,128		\$20,733,967		\$22,697,606		
Outstanding Indebtedness, July 1		2015	2016	2017				
General Obligation Bonds	135	2,585,000	2,470,000	2,155,000				
Capital Outlay Bonds	140	0	0	0				
Temporary Note	145	0	0	0				
No-Fund Warrant	150	0	0	0				
Lease Purchase Principal	153	1,715,000	1,620,000	1,470,000				
TOTAL USD DEBT	155	4,300,000	4,090,000	3,625,000				

\* Tax Rates are expressed in Mills  
\*\* Sponsoring District Only

*[Signature]*  
President

*[Signature]*  
Clerk of the Board

L6411

(First published in The Holton Recorder, Holton, Kan., on Monday, Aug. 7, 2017.)

## IN THE DISTRICT COURT OF JACKSON COUNTY PROBATE DIVISION

In the Matter of the  
Estate of  
Scott D. Ellis

Case No. 2017-PR-25

### NOTICE OF HEARING

## THE STATE OF KANSAS TO ALL PERSONS CONCERNED:

You are notified that a Petition has been filed in this Court by Todd M. Ellis, sole heir of Scott Darren Ellis, deceased, requesting that Descent be determined for the following described real estate in Jackson County, Kansas:

A one-half undivided interest, as tenant in common, with Todd M. Ellis, of the real estate described as: Lots 15 and 16, in Block 51, in the first Addition to the City of St. Marys, Pottawatomie County, Kansas, also described as Lots 15 and 16, in Block 51, in the first Addition to

the Townsite of St. Marys, Pottawatomie County, KS

together with all personal property and other Kansas real estate owned by the decedent at the time of death, and that all such real estate and personal property be assigned pursuant to the rules of intestate distribution.

You are required to file your written defenses to the Petition on or before August 29, 2017, at 8:30 a.m., in this Court, in the city of Holton, Jackson County, Kansas, at which time and place the cause will be heard. Should you fail to file your written defenses, judgment and decree will be entered in due course upon the Petition.

Todd M. Ellis,  
Petitioner

Robert S. Redler #20270  
Attorney for Petitioner  
Law Offices of Robert S. Redler  
PO Box 26,  
511 W. Bertrand  
St. Marys, KS 66536  
Tel: 785-437-3250  
Fax: 785-437-3518

ML6213

The Holton Recorder (7/26/17)  
can be purchased at the following local businesses...

- Holton Recorder Office (inside and out)
- 7-Eleven - Holton (inside store)
- C & D's Food Mart - Whiting (inside store)
- Casey's - Highway location, Holton (inside store)
- Downtown Casey's - Holton (inside store)
- Holton 66 (inside store)
- Holton Dollar General (inside store)
- Hoyt (newsstand outside at Calderwood's Grocery)
- Hoyt Dollar General (inside store)
- Indian Country (inside store)
- Mayetta (newsstand outside at Whistle Stop Cafe)
- Nation Station Convenience Store - Mayetta (newsstand outside)
- Petro Deli - Topeka (inside store)
- Prairie Band One Stop - Mayetta (inside store)
- Soldier Grill (inside store)
- Tractor Supply - Holton (newsstand outside)
- Walmart - Holton (inside store)
- Your Place or Mine - Holton (inside store)

**NEWS TIP?**  
Call  
**The Holton Recorder!**  
(785) 364-3141  
Thank You.

Get The Holton Recorder Today!  
Call 785-364-3141!  
Welcome



# Jackson County

# MARKETPLACE

Reaching 22,800 Readers Each Week!

### Classification:

- "Blind" ads, (those giving only the Recorder's post office box as the address for replies).
- Classified Display ads (those with borders or special typefaces).
- Antiques
- Auctions
- At Your Service
- Automobiles
- Trucks
- Motorcycles
- Recreational Vehicles
- Boats
- Business Opportunities
- Employment
- Feed & Seed
- Garage Sales
- Household Articles
- Livestock
- Miscellaneous
- Musical Instruments
- Poultry
- Rental Property
- Mobile Homes
- Farm Land/Homes
- Residential Property
- Commercial Property
- Lost & Found
- Pets
- Travel
- Wanted To Buy
- No Trespassing
- Public Notices
- Cards of Thanks
- Sporting Goods
- Heavy Equipment
- Farm Equipment
- Happiness Is...
- Personal

### How to place an ad:

Call 785-364-3141, or come by the Recorder office, 109 W. 4th, Holton, Kan., from 8 a.m. to 5 p.m. Monday through Friday. Our deadlines are 5 p.m. on Friday for the Monday edition and 5 p.m. Tuesday for the Wednesday edition.  
E-mail: [holtonrecorder@giantcomm.net](mailto:holtonrecorder@giantcomm.net)

### Rates: Holton Recorder "COMBO" Word Classified Advertising Rates are as follows:

10 words or less - 1 insertion \$3.50  
10 words or less - 2 insertions \$5.50, save \$1.50  
10 words or less - 3 insertions \$7.50, save \$3.00  
10 words or less - 4 insertions \$9.50, save \$4.50  
All word classifieds are printed in the Recorder, Shopper and online.  
Blind ads add \$2 charge.  
Regular classified display ads \$7.70 per column inch.  
Combo classified display ads \$10.40 per column inch.

### Check your Ad!

Please check your ad the first day it appears and report any errors immediately. We are responsible for only one incorrect publication. The Recorder will not be held responsible for damages resulting from any errors.

### Billing Charge:

A \$1.50 billing charge will be added to Recorder Classified Word Ads not paid in advance of publication. The billing charge is to cover the expense of preparing and mailing the bills.

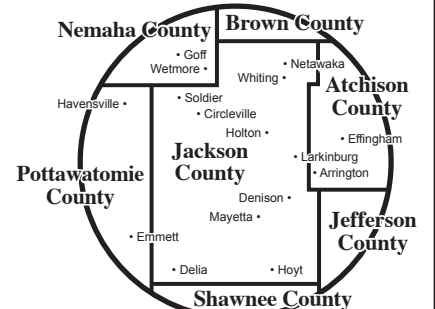
The Recorder reserves the right to edit, reject and classify all advertising at anytime. All advertising is subject to approval by the publisher.



785-364-3141  
or fax 785-364-3422

### We Cover The County And Beyond Each Week!

When you advertise in the Holton Recorder and the Jackson County Shopper you reach every household in the county and beyond.



Next time you advertise with a display ad, tell us to "combo" your ad!

### At Your Service

#### Jim Childs Roofing

Free Estimates  
28 Years Experience  
Insured  
Competitive Prices

Home 364-2451  
Cell 364-6101

AAA MICK TREE SERVICE. Kansas Certified Arborist. Aerial equipped. Stump Removal. Insured. Free estimates. Holton, Kan., 785-383-6670.

TREE TRIMMING & REMOVAL, aerial equipment, stump removal, free estimates, insured. Larrison Tree Service, 785-364-3743. Call anytime.

### Special Notice

\*ALCOHOL PROBLEM with family member or friend? Holton AI-ANON family group, Wednesdays, 7p.m., Evangel United Methodist Church, East door, go to Library, Rm.104.

\*Hours at the JCMA New Hope Center Food Pantry, located at Fifth Street and Wisconsin Avenue in the Holton First Christian Church basement, are from 3 p.m. to 6 p.m. on Thursdays. For more information, call 362-7021.

NOTICE: The Holton Recorder is a local dealer for Superior Rubber Stamp and Seal Company of Wichita. Contact The Recorder for the following supplies: Pre-inked stamps, self-inking stamps, daters, markers, name tags, awards, wall signs, plaques. 364-3141, 109 W.4th St., holtonrecorder@giantcomm.net

\*The Heart of Jackson Humane Society shelter is located at 414 E. Eighth St. in Holton and is open from 1 p.m. to 4 p.m. Monday through Saturday and at other times by appointment. For more information, call 364-5156.

### Lost & Found

FOUND: Hound, tri-color, female, approximately 1-year-old, at Nebo State Fishing Lake east of Holton. Call Banner Creek Animal Hospital, 364-4560.

### Pets

FOR-ADOPTION: (1)Brindle mixed breed, female, 2-to-3-years-old; (1)Terrier mix, male, 10-to-12-years-old; (1)Pointer puppy, 5-to-6-months-old; (1) Wire-haired terrier, female, 1-year-old; (1)Black Lab puppy, female, 5-months-old; multiple cats/kittens, male/female, various ages. Call Banner Creek Animal Hospital, 364-4560.

### Livestock

FOR-SALE: Yearling open Angus heifers, calfhooded. 785-608-1222.

### Wanted

The Heart of Jackson Humane Society is seeking donations of several items for continued operations, as well as more volunteers to walk dogs at the shelter. For more information, call the shelter at 364-5156 or stop by the shelter at 414 E. Eighth St. in Holton.

### Employment

DAIRY LABORER: We need night shift milker, work from 10pm-? Approximately 3-to-4-hour shift, must be reliable and able to pass drug test. 785-364-7074/785-364-6080.

FULL-TIME OFFICE ASSISTANT: Apply in person, Advanced Chiropractic Services, 123 Dakota Ave./Holton, Monday/Wednesday/Friday, 8am-4pm.

### KPA Classified Ads

For Sale  
40' Grade A Steel Cargo Containers \$1650.00 in KC. \$1950.00 in Solomon Ks. 20s' 45s' 48s' & 53s' also available Call 785 655 9430 or go online to Chuckhenry.com for pricing, availability & Freight estimates.

For Sale  
Over 100 pianos on sale during Mid-America Piano's Back-to-School Piano Sale - starting at \$988. Free piano/organ every Saturday at 11 am! Friendly prices, great service. 1-800-950-3774, www.piano4u.com

Misc.  
DONATE YOUR CAR TO CHARITY. Receive maximum value of write off for your taxes. Running or not! All conditions accepted. Free pickup. Call for details. 844-268-9386

Misc.  
LIVING WITH KNEE OR BACK PAIN? Medicare recipients may qualify to receive a pain relieving brace at little or no cost. Call now! 855-796-7301

Misc.  
Diagnosed with Mesothelioma or Asbestos Lung Cancer? If so, you and your family may be entitled to a substantial financial award. We can help you get cash quick! Call 24/7: 855-510-4274

Misc.  
OXYGEN - Anytime. Anywhere. No tanks to refill. No deliveries. The All-New Inogen One G4 is only 2.8 pounds! FAA approved! FREE info kit: 844-359-3973

### Employment

McElroy's, Inc. is currently seeking a Service/Project Plumber for work in the Manhattan, Topeka, and Lawrence areas. This position installs, repairs, and maintains all plumbing systems, equipment, fixtures and piping. Knowledge in plumbing systems, code compliance, and excellent communication skills required. Pay commensurate with experience. Applicants are encouraged to apply in person at 3310 SW Topeka Blvd., Topeka, Kansas between 8am-4pm Monday-Friday or call 785-267-9046.

NEED SOMEONE to mow my yard with my mower as soon as possible. 785-305-0813.

NEK-CAP, Inc. is looking for quality staff to work in their Head Start centers. The following positions are now available: Assistant Teacher in Holton; Program Support Coordinator in Hiawatha or Horton; Child/Family Advocate in Pottawatomie County. Numerous benefits. Job descriptions/application can be seen on the web at www.nekcap.org.

### Appliances

FOR-SALE: Coleman 5,000-watt generator, runs good, \$300, located in Holton. 319-350-3188.

### Lawn & Garden

BULK 100% Decorative river rock. 785-851-0053.

### Rental Property

1-BEDROOM DOWNSTAIRS APARTMENT in Holton: Available now! Close to swimming pool. 785-364-6325.

1-BEDROOM APARTMENT/Holton. Available Sept. 1st. No smokers/pets. \$390/rent. (785)935-2390.

1 - B E D R O O M APARTMENT: Furnished, deposit required, no pets. 785-364-4676/785-408-3261

FOR-RENT/SALE: 2-bedroom, 1-bathroom house, oversized garage, Circleville. \$575/month. 785-268-0118.

MOBILE HOME FOR RENT located in Holton with 3-bedrooms/2-bathrooms, washer/dryer hookups, all kitchen appliances included. If interested, please call Dave at 785-410-8442.

### KPA Classified Ads

Misc.  
SAVE YOUR HOME! Are you behind paying your MORTGAGE? Denied a Loan Modification? Is the bank threatening foreclosure? CALL Homeowner's Relief Line now for Help! 855-401-4513

Misc.  
Updating your bathroom does not have to be expensive or take weeks to complete. BathWraps makes it easy. Call 855-324-2317 today for a free in home consultation.

Misc.  
SWITCH TO DIRECTV. From \$50/Month, includes FREE Genie HD/DVR & 3 months HBO, SHOWTIME, CINEMAX, STARZ. Get a \$50 Gift Card. Call 888-683-1682 (Mon-Fri 8am-9pm CT)

Misc.  
FAST Internet! HughesNet Satellite Internet. High-Speed. Available Anywhere! Speeds to 25 mbps. Starting at \$49.99/mo. Call for Limited Time Price! 877-578-8005 (Mon-Fri 8am-8pm CT)

Misc.  
SAVE ON YOUR MEDICARE SUPPLEMENT! FREE QUOTES from top providers. Excellent coverage. Call for a no obligation quote to see how much you can save! 855-587-1299

Misc.  
VIAGRA and CIALIS USERS! There's a cheaper alternative than high drugstore prices! 50 Pills SPECIAL \$99.00 FREE Shipping! 100% guaranteed. CALL NOW! 855-850-3904

### Rental Property

**SOUTHVIEW APARTMENTS** of Holton  
2 & 3 BR Available.  
Please call Donna (785) 364-5074.

PRIME OFFICE SPACE for rent: 102 W.5th St./Holton. Contact 364-3302. Available Aug.1.

UPSTAIRS APARTMENT: \$350/month plus deposit. 785-260-1923

VERY NICE, very rural, newly remodeled 1999 2-bedroom berm home with attached garage. Appliances included. USD-335. Long driveway shared by owner for access to cattle. Up to three horses allowed. NO PETS/SMOKING IN HOUSE. Outside dog allowed only on approval of owner. On gravel road, 11-miles northeast of Holton. \$900/rent plus deposit. 785-851-7227/7319.

FOR RENT/SALE: 3-bedroom duplex, 524 Ohio Ave./Holton. No smoking/pets, nice. 785-294-1896.

### Automobiles

FOR-SALE: 1999 Dodge Avenger, white, 170,000-miles. 785-872-3140 or 785-817-8025.

### Motorcycles

FOR-SALE: (1)1997 Suzuki Intruder 750, low miles; (1)1995 Honda Shadow 600, low miles, clean w/extras. \$1,800 each/\$3,000 for pair. Call Greg, 541-218-3880.

### Building Supplies

TWO OLDER FARM BUILDINGS in Pottawatomie County to be moved or salvaged. Price is negotiable. Call 785-844-2725 for more information.

### No Trespassing

TRESPASSING WITHOUT permission. Notice is hereby given by the undersigned residents of Jackson County that hunting, fishing, trapping, or shooting, or trespassing day or night is positively forbidden on all land owned, or rented or occupied by us, or on roads adjacent to lands at any time of the year, licenses or no licenses. April 1, 2017-2018. Phil and Colene Gutierrez, Roger Ackeret, Jay Gilliland, BFD Inc., Joseph B. Nick, Harold Knouft, and Joyce DeVader.

### Employment

#### Join us on our journey to culture change! Eastridge Nursing Facility at Centralia has the following open positions:

**CNA:** Various shifts, improved staffing with decreased resident to CNA ratio 6-8:1!

**RN:** Full-time day shift available. Three twelve hour shifts a week and every third weekend. 5am to 5pm.

**Environmental Services Tech:** Full-time day shift available, 30 hours per week. Benefits eligible position

Competitive wages and benefits. Call Eastridge at Centralia 785-857-3388 for more details or apply online at [www.chcsks.org](http://www.chcsks.org).

A division of Community HealthCare System, Inc. EOE

### Employment

**SEEKING A SNAP-Ed PROGRAM ASSISTANT**

K-State Research and Extension, Meadowlark Extension District #7, is accepting applications for a Nutrition Educator for the Supplemental Nutrition Assistance Program (SNAP-Ed) to provide nutrition education to elementary children, and parents of limited resource and diverse families in the Meadowlark Extension District.

The position is 40 hours per week with a minimum requirement of a bachelor's degree. Applicant must have a valid driver's license, proof of insurance and reliable transportation, and must be able to lift and transport educational materials. Work will be coordinated from your home office and travel is involved.

Current rate is \$23,884-\$35,826 per year plus benefits. Applications will be accepted until the position is filled.

For more information Contact, Cindy Williams or by email [csw@ksu.edu](mailto:csw@ksu.edu)  
Find a complete job description at: [www.k-state.edu/hcs/jobs/openings](http://www.k-state.edu/hcs/jobs/openings)

Submit letter of application, resume and names and contact information for three professional references electronically to <http://careers.k-state.edu>. Requisition number is 501731.

KSU is an affirmative action/equal opportunity employer and encourages diversity among its employees. Background check is required.

### Employment

**Presbyterian Manors of Mid-America**  
The way you want to live™  
Topeka Presbyterian Manor

**ENVIRONMENTAL SERVICES DIRECTOR**

This position is responsible for managing the day-to-day operations and services of the Environmental Services Department (maintenance, housekeeping, laundry and grounds). To ensure departmental operations are performed in accordance with current federal, state and local standards, guidelines and regulations, community policies and procedures, and as may be directed by the Executive Director. Advances the value that the resident comes first. The employee values the community as the residents' home and works to create attributes of home and models person-centered care. Associates or Bachelor's degree desired as well as 2-4 years management experience. Building Maintenance experience required. Should possess special knowledge of state and federal regulations pertaining to licensed nursing and/or assisted living facilities as well as OSHA standards.

Please apply at: <http://topekapresbyterianmanor.org>

**Presbyterian Manors of Mid-America**  
The way you want to live™  
Topeka Presbyterian Manor

**RN**

We are currently accepting applications for a FT & PT 6 a.m.-2:30 p.m., PT 2-10:30 p.m. & PT 10 p.m.-6:30 a.m. RN \$1,000 Sign-on Bonus for New RN/LPN Positions

Applicants must be available to work every-other weekend and some holidays. Applicants must have good work history and be able to pass criminal background check and a drug screen.

We offer great benefits and a wonderful working environment!

Come join our team today!  
**Topeka Presbyterian Manor**  
[www.topekapresbyterianmanor.org](http://www.topekapresbyterianmanor.org)

**REGISTERED NURSE**

Community HealthCare System (CHCS) is seeking a RN to join our team of professionals. RNs at CHCS enjoy many benefits of working at the state-of-the-art facility, however, the most enjoyable aspect is working with the system's outstanding medical staff. At CHCS, all care professionals work together for the common goal of providing the best outcome for our patients.

Community HealthCare System has a 6p-6a RN position at the Onaga Campus and a 6a-6p RN position at the St. Marys Campus.

For more information and to apply go to [www.chcsks.org](http://www.chcsks.org) and click on "Careers" or contact Human Resources at 785-889-5026. EOE

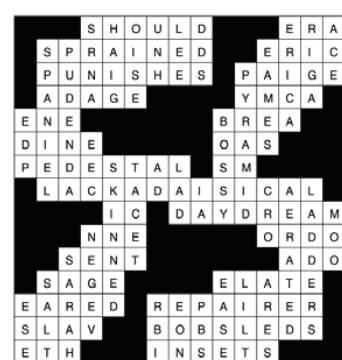
**POSITION ANNOUNCEMENT**

**SOIL CONSERVATION TECHNICIAN:** Position involves work outdoors visiting landowners, traversing uneven terrain, evaluating conservation best management practices, designing practices, overseeing construction, checkout, and more.

**QUALIFICATIONS:** High school diploma or GED. Requirements: background in conservation or agriculture (Two year degree with agriculture classes would substitute for background in conservation or agriculture), ability to communicate effectively and work well with people, valid Kansas state driver's license, and pass a security background investigation, as required by the U.S. Dept. of Agriculture.

To obtain information on the application process contact Jackson County Conservation District, 307 Montana Ave., Holton, KS 66436, 785-364-3329, ext. 136 thru August 31, 2017. Salary \$33,686 plus benefits. EOE

### Crossword Answers



### HELP WANTED

Ag Partners Coop is now hiring for a full time grain elevator position at our Topeka location. Benefits offered are health insurance, 125 Plan, 401k and retirement. Applicant must pass physical test and drug screen. Please stop by any of our locations for an application or download an application from our website <http://www.agpartnerscoop.com> or contact Meryl Charles at 785-741-0526.



# More Open Class Results

## OPEN CLASS FINE ARTS

**Amateur Champion:** David Schock.  
**Amateur Reserve Champion:** Nancy Van Donge.  
**Professional Champion:** Katie Morris.  
**Professional Reserve Champion:** Kathleen Cobb.  
**Fine Arts Age 18 and Younger Champion:** Natalie Willcott.  
**Fine Arts Age 18 and Younger Reserve Champion:** Katina Bartel.

**OIL PAINTING ANIMALS AND BIRDS 18 YEARS AND UNDER**  
**Blue:** Kadyn Wheeler and Gaby Cortes.

**OIL PAINTING ANIMALS AND BIRDS 65 YEARS AND UP**  
**Blue:** Linda Brownlow, Gary Shupe, Rick Bottle and Kathi Kimmi.  
**Red:** C.L. Riley and Lois Boyd.

**OIL PAINTING LANDSCAPES 18 YEARS AND UNDER**  
**Champion:** Natalie Willcott.  
**Blue:** Lexie Larson, Kadyn Wheeler, Gaby Cortes and Katina Bartel.

## OIL PAINTING LANDSCAPES 19-64 YEARS OLD

**Purple:** Garrett Minner.  
**White:** Lois Boyd.  
**OIL PAINTING LANDSCAPES 65 YEARS AND UP**  
**Purple:** Gary Shupe and Nancy VanDonge.  
**Blue:** Mary McCrory, Marilyn Spiker, Rick Bottle and Kathi Kimmi.  
**Red:** Linda Brownlow, C.L. Riley and Sandy Williams.

**OIL PAINTING LANDSCAPES PROFESSIONAL**  
**Purple:** Kathleen Cobb.  
**Blue:** Sandra Studebaker-Gilbert.

**OIL PAINTING FLOWERS 18 YEARS AND UNDER**  
**Reserve Champion:** Katina Bartel.

**OIL PAINTING FLOWERS 65 YEARS AND UP**  
**Reserve Champion:** Nancy VanDonge.  
**Purple:** Rick Bottle.  
**Blue:** Sandy Williams.

## OIL PAINTING FLOWERS

**Blue:** Susan Stallbaumer and Beth Fenske.

**LARGER THAN 70X70 HAND QUILTED BY 1 PERSON**  
**Red:** Donna Tudor.

**LARGER THAN 70X70 HAND EMBROIDERED BY 1 PERSON**  
**Champion:** Debbie Liggatt.

**LARGER THAN 70X70 HAND EMBROIDERED BY 2 OR MORE**  
**Purple:** Mary Jo Fernkopf.

**LARGER THAN 70X70 MACHINE QUILTED BY 1 PERSON**  
**Blue:** Carolyn Bartlett.

**LARGER THAN 70X70 APPLIED BY 2 OR MORE**  
**Purple:** Marilyn Spiker.  
**Blue:** Mary Schock.

## OPEN CLASS QUILTS

**Small Quilts Champion:** Melissa Dibbern.  
**Small Quilts Reserve Champion:** Marilyn Spiker.  
**Large Quilts Champion:** Debbie Liggatt.  
**Large Quilts Reserve Champion:** Kristina Callison.  
**Miscellaneous Quilt Champion:** Marilyn Spiker.  
**Miscellaneous Quilt Reserve Champion:** Jo Ann Nelson.

**LARGER THAN 70X70 PIECED BY 1 PERSON**  
**Reserve Champion:** Kristina Callison.  
**Purple:** Corrine Olsen.  
**Blue:** Gail Schmitz.

**LARGER THAN 70X70 PIECED BY 2 OR MORE**  
**Purple:** Sandi Butler, Diane Gruver, JoAnn Nelson, Marilyn Spiker, Rochelle Falk, Regina Wofford, Lenora Ball and Phyllis Slipke.

## OPEN CLASS ARTS AND CRAFTS

**Champion:** Richard Bone.  
**Reserve Champion:** David Schock.

**PAINTED OBJECT**  
**Blue:** Brooklynn Powell and Dani Peters.

**WOOD CARVING**  
**Purple:** David Schock.

**METAL WORK**  
**Blue:** Mary Leigh Myers.

**CRAFT MADE FROM NATURAL MATERIALS**  
**Purple:** Dyann Parks.

**CRAFT MADE FROM RECYCLED ITEM(S)**  
**Purple:** Jessica Schuette, Olivia DeBusk and Dalton Peters.  
**Blue:** Sandy Allen, Cally Stephens, Rebecca Pope and Dani Peters.  
**Red:** Hanna Myers.

**CRAFT BY CHILD 7 AND YOUNGER**  
**Purple:** Cally Stephens, Ellis Larson, Jordan Kennedy, Kellee Kahle and April Slipke.  
**Blue:** Abigail Schuster, John Henry Myers, Hanna Myers, Aliana Bausch and Dani Peters.  
**Red:** Mary Leigh Myers.

**CRAFT BY CHILD 8-12 YEARS OLD**  
**Purple:** David Schock and Brooke Slipke.  
**Blue:** Brooklynn Powell, Koy Tannahill and Mary Leigh Myers.  
**Red:** Dalton Peters.

## MISCELLANEOUS CRAFT

**Champion:** Richard Bone.  
**Reserve Champion:** David Schock.  
**Purple:** Sandy Allen, Blaine Lutz, Rebecca Pope and Koy Tannahill.  
**Blue:** Jessica Schuette, Hanna Myers and Mary Leigh Myers.  
**Red:** Brooklynn Powell.

**BABY THEME PAGE**  
**Blue:** Sandy Allen.

**FAMILY PAGE**  
**Purple:** Sandy Allen.  
**Blue:** Linda Brownlow.

**VACATION PAGE**  
**Blue:** Sandy Allen and Linda Brownlow.

**HOLIDAY PAGE**  
**Blue:** Sandy Allen.

**SPORTS PAGE**  
**Purple:** Sandy Allen.  
**Blue:** Linda Brownlow.

**SPECIAL EVENT PAGE**  
**Blue:** Linda Brownlow.

## Employment

**TRIM SAW OPERATOR**  
 Hoyt Pallet Co., Inc. is seeking a Trim Saw Operator. No experience necessary. Apply in person. 11621 P4 Rd., Hoyt, KS 66440 (785-986-6785)

**Employment**

## Employment

**Presbyterian Manors of Mid-America**  
 The way you want to live™ Topeka Presbyterian Manor  
**CMA**  
 Full-time on days, 6 a.m.-2:30 p.m. & evenings 2 p.m.-10:30 p.m. in Healthcare.  
**\$500 SIGN-ON BONUS**  
**CNA**  
 Full-time on Days 6 a.m.-2:30 p.m. & evenings 2 p.m.-10:30 p.m. & part-time on all shifts  
**\$500 SIGN-ON BONUS**  
 Applicants must be able to work every-other weekend and some holidays, have good work history and be able to pass a criminal background check and a drug screen. We offer great benefits and a wonderful working environment.  
**Come join our team today!**  
 Please apply at:  
<http://topekapresbyterianmanor.org>

**Presbyterian Manors of Mid-America**  
 The way you want to live™ Topeka Presbyterian Manor  
**RN Case Manager**  
 We are currently accepting applications for a full-time RN Case Manager.  
**\$1,000 SIGN-ON BONUS**  
 Would be responsible for supervising Medicaid Part A and facilitating managed care programs. Prefer at least 2 years experience in a hospital or long-term care community w/experience in rehabilitative and restorative nursing practices and Medicare procedures.  
 We offer great benefits and a wonderful working environment!  
 Come join our team today!  
**Topeka Presbyterian Manor**  
[www.topekapresbyterianmanor.org](http://www.topekapresbyterianmanor.org)

## PROFESSIONAL

**Purple:** Sandra Studebaker-Gilbert.

**OIL PAINTING OTHER 18 YEARS AND UNDER**  
**Red:** Katina Bartel.

**OIL PAINTING OTHER 19-64 YEARS OLD**  
**Blue:** Garrett Minner.

**OIL PAINTING OTHER 65 YEARS AND UP**  
**Purple:** Nancy VanDonge.  
**Blue:** Rick Bottle and Sandy Williams.  
**Red:** Linda Brownlow and Gary Shupe.

**OIL PAINTING OTHER PROFESSIONAL**  
**Champion:** Katie Morris.  
**Blue:** Sandra Studebaker-Gilbert.

**PASTELS OIL OR CHALK 65 YEARS AND UP**  
**Red:** David Schock and Mary Schock.

**WATERCOLOR 18 YEARS AND UNDER**  
**Blue:** Alexandria Greene.

**WATERCOLOR 65 YEARS AND UP**  
**Champion:** David Schock.  
**White:** Mary Schock.

**LARGER THAN 70X70 OTHER BY 2 OR MORE**  
**Purple:** Rochelle Falk and Lenora Ball.  
**Blue:** Susan Stallbaumer.

**LESS THAN 70X70 HAND QUILTED BY 2 OR MORE**  
**Purple:** Regina Wofford.

**LESS THAN 70X70 HAND EMBROIDERED BY 2 OR MORE**  
**Purple:** Melissa Dibbern.

**LESS THAN 70X70 APPLIED BY 1 PERSON**  
**Reserve Champion:** Marilyn Spiker.

**LESS THAN 70X70 APPLIED BY 2 OR MORE**  
**Champion:** Melissa Dibbern.

**LESS THAN 70X70 ARTS QUILT BY 1 PERSON**  
**Blue:** Sandi Butler.

## OPEN CLASS FLOWER SHOW

**Champion:** Diane Gruver.  
**Reserve:** Sarah Phillips.  
**Best of Show Flower Arrangement:** Gayle Bartel.

**HOUSE PLANT, CARED FOR BY CHILD**  
**Blue:** Breanna Gouge.

**SUCCULENT**  
**Reserve:** Julie Fahrmeier.  
**Purple:** Julie Fahrmeier.

**ZINNIAS, FANTASY, POMPONS, PEPPERMINT**  
**Purple:** Judy Jones.  
**Blue:** David Schock.

**ZINNIAS, MIXED**  
**Purple:** Shirly Horr and Judy Jones.  
**Blue:** Barb Shields.  
**Red:** Sarah Phillips.

**BLACK-EYED SUSAN**  
**Purple:** Judy Jones and Clara Larison.  
**Blue:** David Schock.

**PURPLE CONEFLOWER**  
**Red:** Clara Larison.

**GAILLARDIA**  
**Blue:** Judy Jones.

**GLADIOLUS**  
**Reserve:** Sarah Phillips.

**AFRICAN VIOLETS**  
**Champion:** Mary Schock.

**HIBISCUS, SPECIMEN**  
**Champion:** Diane Gruver.  
**Purple:** Donna McNicholas.

**LILY, SPECIMEN**  
**Blue:** Mary Schock.

**LILY, HEMEROCALLIS - COLLECTION**  
**Blue:** Mary Schock.

**MARIGOLD, DWARF LARGE**  
**Blue:** Shirly Horr and David Schock.

**MARIGOLD, COLLECTION (5)**  
**Blue:** Judy Jones and Sarah Phillips.

**PETUNIAS, RUFFLED**  
**Blue:** Donna McNicholas.

**PETUNIAS, NON-RUFFLED**  
**Purple:** Donna McNicholas and David Schock.

**PETUNIAS, DOUBLE**  
**Blue:** Donna McNicholas.

**PHLOX, HARDY**  
**Purple:** Diane Gruver.  
**Blue:** Mary Schock.

**ANNUAL NOT LISTED**  
**Blue:** Clara Larison.  
**Red:** Gayle Bartel.

**STRAWFLOWERS**  
**Purple:** David Schock.

## WATERCOLOR PROFESSIONAL

**Reserve Champion:** Kathleen Cobb.

**CHARCOAL, PEN, INK, PENCIL, 18 YEARS AND UNDER**  
**Blue:** Alexandria Greene.  
**White:** Cooper Duryea.

**CHARCOAL, PEN, INK, PENCIL, 65 YEARS AND UP**  
**Red:** Marilyn Spiker.

**ACRYLIC 18 YEARS AND UNDER**  
**Red:** Turner Morris.  
**White:** Brooklynn Powell and Cooper Duryea.

**MIXED MEDIUM 19-64 YEARS OLD**  
**Blue:** Sandy Allen.  
**Red:** Sandy Allen (2).  
**White:** David Schock.

**MIXED MEDIUM 65 YEARS AND UP**  
**White:** Mary Schock.

**THREE-DIMENSIONAL 18 YEARS AND UNDER**  
**Blue:** Turner Morris.

**THREE-DIMENSIONAL 19-64 YEARS OLD**  
**Red:** Sandi Butler.

**CONSTRUCTED BY EXHIBITOR 70 YEARS AND OLDER**  
**Blue:** Corrine Olsen and Helen Bausch.

**TOTES/PURSES**  
**Purple:** Sandi Butler.

**TABLE RUNNERS/TOPPERS**  
**Purple:** Joyce Hale.  
**Blue:** Diane Gruver and Corrine Olsen.

**HOLIDAY TABLE RUNNERS/TOPPERS**  
**Blue:** Corrine Olsen.  
**Red:** Mary Schock and Donna Tudor.

**WALL HANGINGS**  
**Champion:** Marilyn Spiker.  
**Reserve Champion:** JoAnn Nelson.  
**Blue:** Sandi Butler.

**OTHERS, NOT LISTED**  
**Red:** Mary Schock.

**CACTUS**  
**Blue:** Donna McNicholas.

**AIRPLANE OR SPIDER**  
**Purple:** Julie Fahrmeier.

**DECORATION OF SPECIAL SEASON**  
**Purple:** Mary Schock.

**CENTERPIECE**  
**Purple:** Mary Schock (2).

**DRIFTWOOD WITH FRESH FLOWERS**  
**Blue:** David Schock.

**ARTIFICIAL ARRANGEMENT, ADULT**  
**Champion:** Gayle Bartel.  
**Blue:** Mary Schock.

**ARRANGEMENT IN A CUP OR SAUCER**  
**Blue:** Mary Schock.

**Employment**

**Employment**

## Public Notice

(Published in The Holton Recorder, Holton, Kan., on Monday, Aug. 14, 2017.)

### Quarterly Statement Jackson County, Kansas

Quarterly statement of Linda Gerhardt, Treasurer of Jackson County, Kansas. Showing a balance in her hands for the quarter ending July 31, 2017 as required by statutes.

County General	3,341,621.90	Sheriff	1,123,852.77
Juvenile Intake	139,918.53	Capital Outlay	2,756,144.33
Grants	142,594.63	Technology	15,838.61
Technology/Treas	4,590.83	Heritage Trust	476.00
Technology/Clerk	5,164.02	Road & Bridge	1,433,521.18
Noxious Weed	47,857.31	Elderly	56,112.07
Bond & Interest	95,151.21	Auto	8,379.98
Tourism	50,596.55	911	67,858.92
Sp Parks & Recreation	118,984.59	Special Alcohol	100,432.88
Sp Road Mach Outlay	851,043.18	Weed Cap Outlay	119,032.91
Elderly Bus Replacement	48,699.64	VanSwer Principle	75,048.00
VanSwer Scholarship	535.69	VanSwer Needy	1,349.64
Attorney Training	6,674.77	Unclaimed Legacy	1,000.00
Disbursement	133,148.84	Victim Grant	-4,712.77
Redemptions	91,591.45	Advance Tax	29,624.14
Tax Account	357,408.38	Commercial Vehicle	5,536.39
Motor Vehicle	330,986.22	Recreational Veh	5,695.31
Elderly Cap Improvement	85,299.65	Comp-Iso-Local	38,097.63
Drivers License	1,179.00	Cemetery	998.52
Rd & Br 4% Sales Tax	565,535.05	Sales Tax	326.57
Janette Fund Restitution	-4,309.26	Auto Tag Fee	8,266.95
Inmate Welfare	10,237.45	Excise Tax	258.79
Fire	1,594.03	Schools	25.64
Long & Short	-28.72		

Total cash on hand as of July 31, 2017. \$12,269,239.40  
 I do solemnly swear that the above statement is complete, true and correct to the best of my knowledge and belief, so help me God.

*Linda Gerhardt* County Treasurer  
*Sally Kelley* Deputy County Clerk  


## Estate Auction

Estate of: Mike Carroll | Owner: Brenda Carroll  
**Thurs., August 24, 2017 | STARTS @ 8:57 A.M.**  
 311 S. Ross | Vinita, OK 74301

**COKE MEMORABILIA, MILLS SLOT MACHINE, TRUCK, TRAILER, CARPORT, UNIQUE ANTIQUES, FURNITURE & COLLECTIBLES, JUKEBOXES, DISPENSING MACHINES, AMERICANA & FOLK ART, TELLER CAGE, FLAPPER PURSES, TOOLS, NAT'L CASH REGISTER**

*Running 2 Auction Rings All Day!*

Auctioneer's Note: Due to the passing of Mike, Brenda is selling some of their personal property. Mike was the co-owner of Farmers & Ranchers Livestock Auction in Vinita. Together they have a 50+ year love of collecting antiques. Brenda shared their antiques at War Eagle but has decided to slow down. You won't be disappointed with what you find as this is a picker and collectors dream auction of unique antiques. The auction will have 2 rings. There will be plenty of shade and pasture parking. Visit our website for pictures at [www.chuppsauction.com](http://www.chuppsauction.com) or follow us on Facebook for updates.

Directions: From Vinita, OK, at the Jct of US-60/EUS-69 N/Rte 66 and W South Avenue, turn west on W South Ave. Go 9 mi to S Ross St. Turn right for .1 mi and property will be on the left. Look for auction signs.



Terms: Cash - Credit Cards - Check with Proper ID - OK Sales Tax Applies unless exemption is shown. NOT RESPONSIBLE FOR ACCIDENTS. ANY ANNOUNCEMENTS DAY OF SALE SUPERSEDES PREVIOUS ADVERTISING.

**For full item list, more info & pictures visit [chuppsauction.com](http://chuppsauction.com)**

**CHUPPS AUCTION CO.**  
 Stan Chupp - (918) 638-1157 | E. J. Chupp - (918) 639-8555  
 Dale Chupp, Realtor, Century 21, NEOKLA - (918) 630-0495

## Thank You

The Prairie Band Potawatomi Nation Charitable Contributions Committee has awarded KANZA Mental Health Foundation, Inc. with a \$2,500 grant that will go towards purchasing new playground equipment. This equipment will be located at the Moser Building, which currently houses the center's community services for children and adults. This grant comes at a wonderful time as renovations to the Moser Building will begin later this year. The renovations of the Moser Building will bring all KANZA services under one roof for Jackson County. KANZA thanks the PBP Nation for the continued support of mental health services for Jackson County.

David Elsbury, LCP, CEO  
713 Idaho Ave., Holton • 785-364-4536

## Employment

## HELP WANTED: TIRE TECH POSITION

Full-time Tire Tech, 44 hours per week. Competitive hourly wage & weekly overtime. Health, life & disability insurance benefits. Experience in passenger & truck tires preferred. Must be able to pass DOT physical. Apply in person at:

## Dillon Tire

2000 Skyway Hwy. 59, Atchison, KS 66002

## DEADLINES ...

**Here's ours at The Holton Recorder:**

For Monday's paper, Fridays at Noon.

For Wednesday's paper, Tuesdays at Noon.

Phone (785) 364-3141 for additional information.

Thank You.



# Eclipse Fest is Saturday

Eclipse Fest, to benefit the Banner Creek Science Center and the Jackson County Community Band, will be held from 6 p.m. to 10 p.m. Saturday, Aug. 19 at Banner Creek Science Center and Observatory, located at 22275 N Road just west of Holton, it has been announced.

The celebration will include musical entertainment with space/sun/moon themes provided by the Jackson County Flutes from 6 p.m. to 6:30 p.m. and the Jackson County Community Band from 6:30 p.m. to 7 p.m. Visitors may also enjoy a hot dog meal, courtesy of Sonic and Thrivent.

Local and national astronomers will make presentations on the upcoming total solar eclipse, which will occur on Monday, Aug. 21. There will be door prize drawings for eclipse merchandise and a grand prize drawing for a diamond ring valued at \$1,000, donated by Diamonds by Design.

The "diamond ring effect" is one of the beautiful eclipse features that may be viewed from Holton on the afternoon of the eclipse, it was reported.

Admission tickets may be purchased for \$5 at the Gossip, Penny's or Farmers State Bank, or at the door. Audience members are encouraged to bring lawn chairs or blankets to sit on. All proceeds from the event will be divided between the Science Center and the Jackson County Community Band.

For more information, please email Mike Ford at mford2001@gmail.com or leave a message at 364-2641.



# Gunter...

Continued from Page 1

The Paralympics are more focused on athletes with just physical disabilities, and athletes are categorized by their disability and compete with other athletes with the same disability.

"The Special Olympics locally are great, but there aren't many people with my same disability so the Paralympics offers more challenges and it's seems more fair."

In high school at Royal Valley, Gunter wanted to play football and wrestle but was unable due to his disability.

"So when everyone was lifting weights, I would go out to the track and run and run," said the 2015 RVHS graduate. "I've been running for six or seven years, and I just keep on going. It makes me feel better because it's something I can do and get better at the more I work."

Gunter said his goal is to qualify as a paralympian for Team USA and find a college so he can train throughout the year with other athletes.

"Right now, I'm just running here in Hoyt on the country roads to stay in shape," he said. "I just want to meet my goals and follow my dreams."

Gunter is a cook and waiter at Bailey's Café in Hoyt and is also a manager for the RVHS football team.



The mountain-climbing obstacle shown in the top photo here was a big hit with the kids attending the Jackson County Sheriff's Office Day Camp at Banner Creek Reservoir on Thursday morning. James Benedict, shown at left, and Emma Summers, shown at right, both of Holton, had no trouble climbing to the top. In the photo above, Cecil Mercer of the Prairie Band Potawatomi Fire Department is shown assisting kids as they climbed onto the driver's seat of a firetruck.

Photos by David Powis

# Purple Heart...

Continued from Page 1

According to the navigator of the "I'll Be Back" crew, Lt. Edmund Donnelly, the B-24 had "a bad day from the word go," with a delayed takeoff and flak hitting the plane's #1 and #4 engines just after the crew received the "bombs away" order.

Donnelly told the pilot, Lt. Frank Albert, to fly for Switzerland, but Albert insisted "that we had brought the bombs this far and they would go on the target," Donnelly said. Albert then gave the "bail out" signal and ordered the crew to evacuate.

"My last last view of Frank

Albert was of him hunched over the controls giving four of us a chance for life," Donnelly said.

Donnelly and three other members of the crew survived and were captured by enemy forces, while Brady, Albert and four others perished in the resulting crash, and they had orig-

inally been buried by German forces near the site of the crash, it was reported.

Brady's body was eventually recovered and brought back to the States. He was buried in Soldier Cemetery, near his parents.

# Jackson Heights budget...

Continued from Page 1

The district's 2016-17 valuation was set at \$20,733,967, which generated \$1,064,710 on a 53.127-mill levy.

The proposed new budget sets the district's maximum budget authority for the school year at \$8,091,765. Last year, the district had actual expenses of \$6,022,721.

The district's total debt is listed at \$3,625,000, down from last year's total debt of \$4,090,000. The most recent debt amount includes \$2,155,000 in general obligation bonds, issued in 2007

for the new middle and high school classroom addition, and \$1,470,000 in lease purchase principal for district infrastructure improvements made in 2008.

The school board will also hold its regular monthly meeting at 7 p.m. today at the JHHS library. Agenda items for the meeting include introduction of new staff, a presentation on the high school greenhouse, approval of Early Learning Kansas State Preschool and Kansas Parent Educator Program grants and approval of the 2017-18 coaches' handbook.

# Holton budget...

Continued from Page 1

The total mill levy for the district last year (58.897) was .51 mill more than what is being proposed for this year. The total mill levy for the year before that was 58.796 mills.

Last year, the school district collected \$2,532,277 in local taxes and the year before that the district collected \$2,459,392 in local taxes.

Holton USD 336 has total debt for the new year of \$21,840,000, with \$20,400,000 of that associated with the construction of the new elementary school.

Last year, the district had total debt of \$22,732,687, with \$20,990,000 of that associated with the new elementary school.

The new proposed budget for USD 336 sets the district's maximum spending authority at \$26,700,694, which is up \$3,154,432 over the district's maximum spending authority

last year of \$23,535,262. The year before that the district had a maximum spending authority of \$25,315,909.

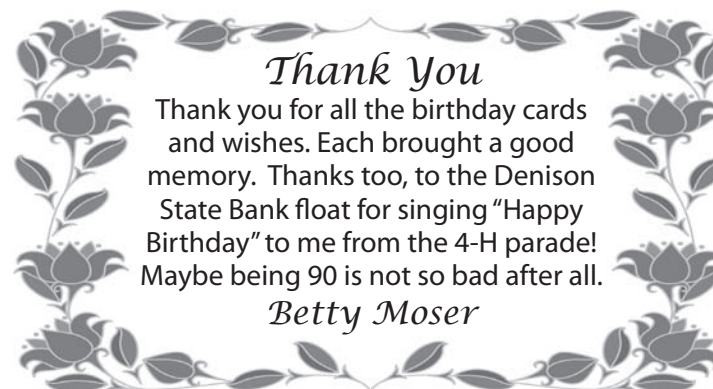
In other business at the school board's special meeting on Wednesday, Aug. 9, the board:

\*Noted the resignation of Annette Searles as HHS cheer sponsor.

\*Approved four motions to enter into executive session four different times for a total of 31 minutes to discuss confidential student information with Bob Davies (superintendent) and Beth Smith (elementary school principal).

\*Upon returning to open session at 6:45 p.m., adjourned the meeting at 6:52 p.m.

**SEPTEMBER SUBSCRIPTIONS ARE NOW PAYABLE**



Thank You

Thank you for all the birthday cards and wishes. Each brought a good memory. Thanks too, to the Denison State Bank float for singing "Happy Birthday" to me from the 4-H parade! Maybe being 90 is not so bad after all.

Betty Moser

## AUCTION

**10:30 a.m. • Saturday, Aug. 19, 2017**  
**17440 182nd Road, Denison, KS**

*DIRECTIONS: From Denison go south on "W" Road to 182nd Road and turn right. Then go west 1/4 of a mile. Watch for signs!*

**1969 GMC 2-ton Truck; 1969 Dodge 2-ton Truck; 5th Wheel Horse Trailer; NEW Motorcycle Lift; Lincoln Welder (Model 200) on trailer; Heavy Duty Grinding Stand; Henry Metal Lathe; Oster Pipe Threader; Grinder - Belt Driven; Military Generator - 5kw; Miller 200 LE Welder/Generator; PTO Wench; (2) Detroit Diesel Engines; 3 pt. Post Hole Digger (3 different size attachments); 3 pt. 7 ft. Box Blade; 3 pt. Sickle (Massey Ferguson); 3 pt. Lift Boom; 3 pt. 10-ft. Rotary Hoe; 721 Diesel Grasshopper Mower w/cab & broom; (3) 2-wheel Trailers; (2); Steel Military Beds; Old Hobart Welder on trailer; Pull-type Lister; Lincoln Welder (250 AC/DC) on trailer; 2.5 hp 21-gallon Air Compressor; Lincoln (225) Welder/Generator; NEW (4) 12-16.5 Skid Loader Tires; RV Portable Generator - 2 cycle; NEW Engine Lift; MTD Snow Blower 8 hp 26-in. on track; NEW Sears Work Bench; NEW Delta 9-in. Saw; Portable Heater/AC; Trolling Motor; Johnson 75 hp Outboard Boat Motor; Evinrude 50 hp Outboard Boat Motor; International Steamroller (parts); Drill Press; Welder Work Bench; Bale Spear; 10-ft. x 10-ft. x 8-ft. Portable Shed; Cement Mixer; 5 hp 80-gallon Ingersoll Rand Air Compressor; Aluminum Ramps & Ladders; Log Chains; Deer Stand; 10-ft. x 12-ft. Greenhouse in box; Portable Garage; Chain Saw; NEW Boat Seats; Tool Cabinets**

**HOUSEHOLD ITEMS - 6-Drawer Chest; Zig Zag Portable Sewing Machine; Dining Room Table w/6 Chairs; LP Gas Dryer; Maytag Washer; Heavy Floor Safe; LOTS & LOTS of Household Items too numerous to mention; Lots of Salvage**

**CONCESSIONS BY: ORDER OF EASTERN STAR**

**JUNE & THE LATE FLOYD SCHLODDER, sellers**

**WILSON'S AUCTION SERVICE, Holton, Kan.**  
 Auctioneers: Willy Wilson/Roy Walrod • 785-364-4173 or 785-364-2998  
 Cashier: Dianna Wilson Clerk: Donna Pool

Terms: CASH/Approved Check (ID will be required). Restrooms available. Not responsible for accidents or theft. All items will be sold as is, where is with no warranty. Announcements made day of auction take precedence over printed material.

## SHOP LOCAL

TV Packages Built for You

America's Top 120	America's Top 120 Plus	America's Top 200
<b>\$49.99</b> /mo. <b>190 Channels</b> <small>Local channels included!</small>	<b>\$59.99</b> /mo. <b>190+ Channels</b> <small>All America's Top 120 channels, plus regional sports!</small>	<b>\$69.99</b> /mo. <b>240+ Channels</b> <small>All America's Top 120 Plus and more!</small>

**2-Year TV Price Guarantee**  
- no bundle required

**FREE HD for Life\***

**FREE Standard Professional Installation**

Requires credit qualification. 2-year commitment with early termination fee and eAutoPay. Hopper upgrade fee may apply. Restrictions apply.

**HBO + HBO GO**  
for 12 months at  
**NO EXTRA CHARGE**

After 12 months, you will be billed the current everyday price for HBO unless you call to cancel.

**FREE**  
Premium Channels for 3 months

Offer subject to change based on channel availability. After 3 months, you will be billed \$40/mo. unless you call to cancel.

Call your friendly neighborhood DISH Retailer today!

Sky.com

(785) 914-5096

1020 SW Wanamaker Rd Topeka, KS 66604  
serving jackson county

Offer for new and qualifying former customers only. Important Terms and Conditions: Qualification: Advertised price requires credit qualification and eAutoPay. Upfront activation and/or receiver upgrade fees may apply based on credit qualification. Offer ends 10/18/17. 2-year commitment: Early termination fee of \$20/mo. remaining applies if you cancel early. Included in 2-year price guarantee at \$49.99 advertised price: America's Top 120 programming package, local channels, HD service fees, and equipment for 1TV. Included in 2-year price guarantee for additional cost: Programming package upgrades (\$59.99 for AT120+, \$69.99 for AT200, \$79.99 for AT250), monthly fees for additional receivers (\$5-\$7 per additional TV, receivers with additional functionality may be \$10-\$15) and monthly DVR service fees (\$10-\$15). NOT included in 2-year price guarantee or advertised price (and subject to change): Taxes & surcharges, add-on programming (including premium channels), DISH Protect, and transactional fees. Premium Channels: HBO: After 12 months, you will be billed \$15/mo. unless you call to cancel. 3 Months Free: After 3 months, you will be billed \$40/mo. for Cinemas, Showtime, Starz, and DISH Movie Pack unless you call to cancel. Other: All packages, programming, features, and functionality and all prices and fees not included in price guarantee are subject to change without notice. After 6 mos., you will be billed \$8.99/mo. for DISH Protect unless you call to cancel. After 2 years, then current everyday prices for all services apply. For business customers, additional monthly fees may apply. HBO®, Cinemas® and related channels and service marks are the property of Home Box Office, Inc. SHOWTIME is a registered trademark of Showtime Networks Inc., a CBS Company. STARZ and related channels and service marks are property of Starz Entertainment, LLC. EchoDot: Requires credit qualification and new DISH activation with Hopper® with Sling® or Hopper 3™. Free Echo Dot provided by DISH. Amazon is not a sponsor of this promotion. Amazon, Alexa, Echo Dot, and all related logos are trademarks of Amazon.com, Inc. or its affiliates. BDRIVE\_20516

Model Shown: 2691321

Model Shown: Edge XLT

Model Shown: 5901581

Valley Falls - 785.945.6711 - HeinenRepair.com

## 2017 Model Year-End Clearance

### ALL in-stock Lawn Mowers:

## Ferris, Simplicity, & Country Clipper

## HUGE Savings PLUS 0% Financing Options\*

\*Savings vary by model. Valid on in-stock mowers only. With approved credit. Minimum monthly payment required. See Dealer for details.