



Members of a work crew from Topeka Landscaping, working in conjunction with Brahma Excavating of Holton, worked on a brick retaining wall Thursday afternoon at the Holton Elementary School construction site. Construction superintendent David Lassiter of Nabholz Construction said that in spite of spring rains “putting a dent in our schedule,” construction crews are doing their best to get the new school building ready in time for its fall 2016 opening.

Photo by Brian Sanders

Christmas Bureau still looking for leader

By Ali Holcomb

Leadership is still being sought for this year’s upcoming Jackson County Ministerial Alliance Christmas Bureau.

The following is a brief history of the Christmas Bureau and some of the changes that have occurred over the years since its formation.

Jackson County’s Christmas Bureau has been serving needy families each holiday season since 1981, it was reported.

The Northeast Kansas Human Resources Association initially implemented Christmas Bureau events for families in Brown, Doniphan, Atchison, Nemaha and Jackson counties

that year, according to an article in the Dec. 10, 1981, issue of *The Holton Recorder*.

The Northeast Kansas Human Resources Association was a non-profit group of social service agencies that served those five counties.

Although created by the human resources association, the Christmas Bureau in Jackson County was organized locally through the Northeast Kansas Community Action Program (NEK-CAP) from 1981 to 2009.

During its first year of existence, families that needed extra assistance during the holidays filled out an application at NEK-CAP’s office and boxes of donated items specifically

selected for each family were put together and delivered to the applicants’ homes.

Many of the families were also “adopted” by area organizations, churches and individuals that agreed to take over the responsibility of filling the families’ boxes with gifts and food.

In 1981, donations sought included money, canned goods, blankets and new or used toys, as well as food for a Christmas dinner.

One of the goals of the bureau was to prevent the abuse that sometimes occurs when a family goes from one charitable group to another soliciting gifts while other needy families re-

ceive nothing, the article said.

In its eighth year, 183 families were “adopted” and more than 400 additional families were served by the bureau, according to a report in *The Recorder*.

In 1990, 657 applications were accepted that included 2,099 people.

In the early 1990s, the Christmas Bureau “store” was set up in an area church each year to allow families to “shop” for Christmas gifts. The store was previously set up as a two-day event. St. Dominic’s Parish Hall hosted the event in 1992, and Trinity Lutheran Church hosted it in 1999.

Continued to Page 12

Local parole absconder captured in Oklahoma

A Jackson County resident who had been at large after leading law enforcement on an Aug. 1 manhunt has been captured in northeastern Oklahoma, according to Jackson County Sheriff Tim Morse.

Danny Ross Adams, 25, of Denison, was picked up by law enforcement in Pryor, Okla., after the Jackson County Sheriff’s Office received information that Adams may have been headed to Oklahoma, Morse said. Adams is currently being held

by Oklahoma authorities on local charges there.

Adams had been reported as a suspicious person while in southeastern Jackson County earlier this month, Morse said. A Jackson County deputy was attempting to identify Adams when it was reported that Adams was listed as a parole absconder in relation to a 2012 conviction on a burglary charge in Wyandotte County, and Adams reportedly fled on foot into a thickly wooded area.

Morse said more Jackson County officers arrived, along with officers from other counties, Kansas Highway Patrol, K-9 units and a helicopter, to assist the deputy in finding Adams, but he was not immediately located due to the thick terrain. Deputies responded to a variety of reports of possible sightings of Adams over the next few days, he added.

The sheriff’s office had received information since then that Adams may have headed to Oklahoma, and

Morse said an Internet social media comment led to Adams’ possible location at a bar in Pryor, a community located about 45 miles northeast of Tulsa. Morse’s office then called Oklahoma law enforcement and requested Adams’ arrest, which occurred shortly afterward in Pryor.

According to Morse, Adams had allegedly provided a false name to Oklahoma authorities. Adams is also facing local charges in Oklahoma, it was reported.

New school year begins this week for area students

Wednesday marks the start of the new 2015-16 school year for most young people in the Jackson County area, and students and teachers alike are looking forward to a few more activities as they make the transition from pool days to school days.

Some middle and high school students are hitting the practice fields today before hitting the books later this week, as today marks the beginning of fall sports practice for all area schools. Royal Valley High School is scheduled to host a volleyball parent meeting at 6 p.m. today in the RVHS gym commons.

Open house events have also been scheduled to help elementary students get familiar with their school buildings. At Royal Valley Elementary School in Hoyt, an open house has been scheduled for 5:30 p.m. on Tuesday, followed by an open house and fifth grade orientation meeting at 7 p.m. at Royal Valley Middle School in Mayetta.

At Jackson Heights, an elemen-

tary school open house will be held from 6 p.m. to 7 p.m. Tuesday. And at Wetmore, a back-to-school supper is scheduled for 6:30 p.m. Tuesday, followed by an iPad meeting for parents at 7:30 p.m.

In the Holton district, open houses at the city’s two elementary schools mark the beginning of the final year of classes at those two facilities, as construction of the new Holton Elementary School near the Colorado Elementary School site is expected to be complete in time for the 2016-17 school year. The new school will house all Holton students in pre-kindergarten through fifth grades, it was reported.

A Holton pre-school open house has been scheduled for 5:30 p.m. today at Central Elementary School, and two more elementary open houses are set for Tuesday. Students in kindergarten through second grades and their parents may take part in the

Continued to Page 12



The Big, Bad Wolf, played by Jesse Joiner (front), pleaded for compassion in the courtroom during the song “Have Mercy On Me” in a scene from this weekend’s “The Big Bad Musical.” The wolf was joined by his “Wolfettes” (back row, from left) Mariah Woltje, Jenna Joiner, Lilly Kimberlin and Norah Kelly. The musical was presented by Holton Community Theatre and supported through a NEKLS Destination Libraries Grant. Photo by Ali Holcomb

Fair leaders: 2015’s event ‘huge success’

By Brian Sanders

The recently-concluded 2015 Jackson County Fair — the 90th such event in the county’s history — marked the first time that all fair events were held at the Northeast Kansas Heritage Complex, and many involved with the fair said the transition from the old fairgrounds in Holton to the fair’s new home went smoother than expected.

“The fair was a huge success at the new location,” said Cara Robinson, Jackson County 4-H program manager. “This was a transition year for us, locating to a brand new facility, and I was really impressed with the work that the Jackson County Fair Board and the volunteers that came out to help did, making the 2015 fair one to remember.”

Jackson County Fair Board President Aaron Allen agreed.

“I thought we had a great fair,” Allen said. “We didn’t hear any negative comments on it, and I couldn’t have been more pleased.”

For several years, starting in the late 1940s and early 1950s, when the first buildings were erected at the intersection of U.S. Highway 75 and Kansas Highway 16 in Holton, the Jackson County Fair was held at the fairgrounds located at that intersection, with the exception of the fair’s horse show, held at the Circleville Saddle Club. In 2010, the horse show was moved to the Heritage Complex, becoming the first fair event to be held at that site.

The fair board has been working to sell the fairground land and property to help fund construction of buildings at the Heritage Complex, and in early 2014, it was announced that Casey’s General Store would build a new store on part of the grounds. The livestock barns were demolished

shortly after the 2014 fair ended, and construction the new Casey’s began soon afterward.

Later in the year, the Holton school district acquired the Jackson County Fair Building. The sale of both the plot where the new Casey’s is located and the Fair Building guaranteed that the 2015 fair would be held at the Heritage Complex.

The only aspect of the fair that some expressed disappointment about was the midway, provided again by Toby’s Amusements of Arma. However, Allen noted that the number of rides and games provided by Toby’s, which some said was fewer than in previous years, was “out of the fair board’s control.”

“To us, the fair’s really about 4-H and the 4-H kids, and that all went terrifically,” he said. “The midway generates some income for us, but it’s a sideline.”

Robinson said this year’s fair saw a total of 2,043 4-H entries, which marked a slight decline from last year. The reason for the decline, she said, was that 4-H members were more limited in the number of items they could submit in the foods and photography categories, and poultry exhibits were not allowed this year due to avian flu concerns.

“This was due to the limited space in the small exhibit building, because we didn’t know what kind of entries we would get for the open class department,” Robinson said. “We did not display the food samples this year like in years past, and the 4-Hers could only display three of their arts and crafts entries during the fair. But they were able to have all six of their arts and crafts judged at the pre-fair judging.”

Continued to Page 12

Cowger’s support of 4-H programs noted

By Ali Holcomb

Among the government officials, businesses and 4-H families honored during the recent dedication of the Northeast Kansas Heritage Complex, stood 99-year-old Irene Cowger.

Cowger has been a lifelong supporter of the Jackson County Fair and continues to participate in the open class competitions. This year she won a purple ribbon for a large quilt appliquéd by two or more people and a blue ribbon for her angel food cake.

She was included in the dedication ceremony for her donation of a large quilt that was sold in 2009 during a special “Wolf Hunt” type dinner organized by the East Grant Club.

A drawing was held to win the quilt, and tickets were sold for \$1

each. All proceeds went directly to the construction of the new fairgrounds. The quilt drawing plus the meal from the “Wolf Hunt” dinner raised \$20,000, it was reported.

“I’ve quilted all my life,” Cowger said. “My mother sewed and taught me very early on.”

The eight-foot by eight-foot quilt donated by Cowger was constructed in a star pattern and was red and white.

“I decided I wanted to do something to help out so I donated it,” she said. “Every dollar helps.”

Cowger, whose maiden name was Spiker, was born in Jackson County near Soldier. She joined 4-H at a young age.

Continued to Page 12

TUESDAY’S WEATHER FORECAST:
T-STORMS POSSIBLE, HIGH OF 76
Look for the complete forecast on page 2.

First Baptist Church
Proclaiming the Way, the Truth, the Life
www.fbcholton.com 364-3423

Two of the most despairing words are “if only.”
If we focus on the “if only” we will never see the possibilities that lie ahead.
Paul said, “but one thing I do, forgetting what lies behind
and reaching forward to what lies ahead.” Philippians 3:13b

Sundays
9:15 a.m. - Sunday School
10:30 a.m. - Worship
5:00 p.m. - Prayer Time
5:15 p.m. - RISC
6:00 p.m. - Sr. High Youth
Other activities available throughout the week.

DISTRICT COURT NEWS

Traffic

Matthew R. Gifford, operating a motor vehicle without liability insurance, \$908.

Kenneth L. Manis, transporting an open container, \$208.

Marcus A. Mears Jr., speeding, \$201.

Katelyn M. Ritzert, improper stop or turn signal, license to be carried and exhibited upon demand, \$203.

Jose A. Veloz, driving under the influence of alcohol and/or drugs, found guilty.

Limited Civil

Dispositions

Frank Tecchio and Carol Tecchio vs. Cassie Brumley, sought eviction of defendant from rental premises plus damages and court costs; granted.

Filed

Community HealthCare System Inc. vs. Thomas W. Bontrager, seeking judgment of \$688.10 plus interest and court costs.

Pulmonary and Sleep Associates P.A. vs. Shawn Harris, seeking judgment of \$175 plus interest and court costs.

Continental L.L.C. vs. Regena Sackrider, seeking judgment of \$515.74 plus interest and court costs.

Select1 L.L.C. vs. Kenneth R. Hahn, seeking judgment of \$628.50 plus interest and court costs.

Small Claims

Filed

Kerwin and Carolyn McKee vs. Josh Muller, seeking judgment of \$350 plus interest and court costs.

Andrew Bartell vs. Blair Wagner, seeking judgment of \$1,000 plus interest and court costs.

Criminal

Dispositions

State of Kansas vs. Kevin B. Carter, Topeka, possession of marijuana, no proof of insurance; sentenced to one year in jail, suspended; placed on 12 months probation and fined \$1,000 plus court costs.

State of Kansas vs. Nicholas T. Nichols, Wetmore, possession of marijuana, possession of drug paraphernalia; dismissed.

State of Kansas vs. Lacy E. Hug, Hoyt, domestic battery, disorderly conduct; dismissed.

State of Kansas vs. Charles J.L. Moore, Holton, residential burglary, theft by deception, criminal damage to property; dismissed.

State of Kansas vs. Shelly L. Waid, Stilwell, Okla., battery; sentenced to six months in jail, suspended; placed on six months probation and fined \$100 plus court costs.

State of Kansas vs. Susie L. Beckwith-Essman, Silver Lake, criminal trespass; dismissed.

State of Kansas vs. Dennis R. Stierwalt II, Holton, domestic battery;

sentenced to six months in jail, suspended; placed on 12 months probation and fined \$200 plus court costs.

State of Kansas vs. Ranie E. Williams, Carbondale, theft; dismissed.

State of Kansas vs. Gino V. Vicchiullo, Mayetta, criminal trespass; dismissed

Filed

State of Kansas vs. Teal Bailey, Mayetta, domestic battery.

State of Kansas vs. Travis R. Hunley, Topeka, aggravated battery, two counts of violation of a protective order, domestic battery.

Domestic

Dispositions

In the matter of the marriage of

John J. DeLello and Tianne D. Alexander, sought divorce; granted.

In the matter of the marriage of Sherri K. Boyke and Chad B. Boyke, sought divorce; granted.

Filed

In the matter of the marriage of Thomas K. Kelly and Annette Eakes-Kelly, seeking divorce.

Marriage Licenses

Barry N. Fox, 35, Topeka
Heather L. Dover, 37, Topeka

Andrew J. Lemon, 23, Holton
Kendyl A. McAllister, 21, Holton

Drake C. Cully, 48, Lawrence
Rhonda D. Puckkee, 52, Holton

Sheriff's officers note arrests

The Jackson County Sheriff's Office has reported the following arrests:

■ On July 30, Blake Pearson, 27, Topeka, was arrested on a criminal warrant on a probation violation charge.

■ On Aug. 1, Richard Brooks, 50, Topeka, was arrested on charges of driving while suspended and operating a vehicle with no registration and no liability insurance.

■ On Aug. 2, Bruce Doxlator Jr., 20, Lawrence, was arrested on a traffic traffic warrant on a charge of failure to appear.

■ On Aug. 3, Edgar Lopez-Cardona, 27, Topeka, was arrested on a criminal warrant on a charge of failure to appear and on a criminal warrant on a charge of aggravated failure to appear.

■ On Aug. 3, Danielle Hokanson, 30, Topeka, was arrested on three criminal warrants on probation violation charges.

■ On Aug. 3, Joseph Grant, 31, Topeka, was arrested on a criminal warrant on a probation violation charge.

■ On Aug. 4, Andrew Evans, 36, Topeka, was arrested on a criminal warrant on charges of burglary and theft of property.

■ On Aug. 4, Rahim Esquib, 29, Topeka, was arrested on a criminal warrant on charges of theft, violation of protection order and harassment by telephone.

■ On Aug. 4, Angelo Aldridge, 28, Topeka, was arrested on a charge of driving while suspended.

■ On Aug. 5, Teal Bailey, 23, Mayetta, was arrested on a charge of domestic battery. On Aug. 7, Bailey was arrested on a charge of motion to revoke bond.

■ On Aug. 6, Jesse Rhodd, 33, Topeka, was arrested on a criminal warrant on a charge of failure to appear.

■ On Aug. 7, Howard With, 42, Pamona, was arrested on charges of driving while suspended, driving while declared a habitual violator and operating a vehicle without liability insurance.

■ On Aug. 7, Fernando Osomio, 28, Kansas City, Mo., was arrested on charges of driving under the influence of alcohol and/or drugs, fleeing or attempting to elude law enforcement, reckless driving and driving while suspended.

■ On Aug. 7, Christy Bridgeford, 59, Osage City, was arrested on a criminal warrant on a charge of theft.

■ On Aug. 8, Camoran Shopteese, 28, Muscotah, was arrested on a charge of driving while suspended.

■ On Aug. 8, Raymond Grant Jr., 37, Topeka, was arrested on a criminal warrant on a charge of failure to appear.

■ On Aug. 8, Zarric Baker, 19, Hoyt, was arrested on a traffic warrant on a charge of failure to appear.

■ On Aug. 9, Jeffrey Peak, 29, Topeka, was arrested on charges of driving under the influence of alcohol and/or drugs, driving while suspended and transporting an open container. Peak was also arrested on two Shawnee County traffic warrants on charges of failure to appear.

■ On Aug. 10, Stephanie Schilt, 32, Mayetta, was arrested on a criminal warrant on a charge of aggravated assault.

■ On Aug. 10, Kelly Greeson, 30, Topeka, was arrested on two criminal warrants on probation violation charges.

■ On Aug. 12, Zenor Wiggins, 31, Topeka, was arrested on a traffic warrant on a charge of failure to appear.

■ On Aug. 12, Jamiee Trueblood, 27, Kansas City, Mo., was arrested on a criminal warrant on a charge of aggravated failure to appear.

Two from Mayetta hurt in Nebraska accident

A four-vehicle accident in Nemaha County, Neb. injured five people, including two Mayetta residents.

According to the Nebraska Highway Patrol, the accident occurred at 10:45 a.m. Wednesday on U.S. Highway 75, three miles north of Auburn near 732nd Road. At that time, three northbound vehicles were stopped on the highway when a mini van, driven by Cassidy Robertson of Auburn, did not slow down as it approached the stopped vehicles.

According to the patrol, Robertson's vehicle struck the rear of a

mini van driven by Benjamin Ideus of Tecumseh, causing a chain reaction crash with the two vehicles in front of Ideus' vehicle.

The occupant of the vehicle directly in front of Ideus' van was uninjured, but the two inside the lead vehicle, identified as David Herring and Carolyn Herring, both of Mayetta, suffered injuries.

They, along with Ideus, his passenger, Kristin Ideus of Tecumseh, and Robertson, were transported to Nemaha County Hospital for treatment of injuries.

Accidents reported in county

The Jackson County Sheriff's Office has reported the following accidents:

■ At 11 p.m. on July 22, Jonathan Watkins, 31, Goff, was traveling south on J Road, just north of the 278th Road intersection, when he swerved his vehicle to miss striking a deer in the road. The vehicle left the road to the west, re-entered the road and then entered a south ditch on the other side of the intersection. It overturned and struck a fence.

Watkins' 2006 Chevrolet sustained damage to its front bumper, hood, top, left side and front right quarter panel that was listed at more than \$1,000. It was towed from the scene. No injuries were reported

■ At 12:15 a.m. on July 22, Jordynn Brown, 18, Holton, was traveling east on Kansas Highway 9 near O Road when her 1996 Toyota struck a raccoon in the road. The Toyota sustained damage to its front bumper that was listed at less than \$1,000.

■ At 3 a.m. on July 30, Brady Strecker, 18, Hoyt, was traveling east on 142nd Road a few miles east of U.S. Highway 75 when his vehicle

left of the road and struck two mailboxes. Strecker's 1996 Acura sustained damage to its front bumper and rear left quarter panel that was listed at more than \$1,000. It was towed from the scene.

The damaged mailboxes and posts were owned by Timothy Martin and Melvin Bailey of rural Mayetta.

■ At 5:15 p.m. on Aug. 2, Cassandra Kenworthy, 17, Soldier, was traveling west on 270th Road near F Road when she lost control of her vehicle and it entered a ditch on the north side of the road. Kenworthy's 1999 Ford sustained damage to its front bumper, hood, undercarriage and left and right sides that was listed at more than \$1,000. It was towed from the scene.

■ At 10:20 p.m. on Aug. 4, Cody Purdum, 20, Mayetta, was traveling east on 106th Road near H Road when his 1999 Dodge left the wet road and struck a tree.

Purdum's vehicle sustained damage to its front bumper, hood, windshield and front right and left sides that was listed at more than \$1,000. It was towed from the scene.

Holton police report arrests

The following arrests were reported in recent days by the Holton Police Department.

■ Brent Derrick, 37, Holton, was arrested July 30 on charges of domestic battery and disorderly conduct.

■ Jacob Sanchez, 24, Horton, was arrested July 31 on charges of driving under the influence of alcohol and/or drugs and failure to maintain a single lane.

■ Michael Bakos, 38, Topeka, was arrested Aug. 2 on a Topeka failure to appear warrant.

■ Tony McClendon, 59, Holton, was arrested Aug. 8 on charges of domestic battery and criminal damage to property.

■ Angela McDaniel, 39, Holton, was arrested Aug. 8 on charges of driving under the influence of alcohol and/or drugs, failure to maintain a single lane and driving left of center.

■ Joshua Powell, 35, Raeford, N.C., was arrested Aug. 8 on charges of driving under the influence of alcohol and/or drugs, driving left of center and refusal of a preliminary breath test.

Tickets still available for Heart of Jackson's Corvair drawing

Tickets are still available for the Heart of Jackson Humane Society's drawing for a classic 1966 Chevrolet Corvair, it was reported.


"We're right about halfway" through the total of 600 tickets available for sale, according to Betty Flemming of the humane society. Tickets are available for \$25 each, and humane society officials said a drawing will be held after the tickets

are sold.

Heart of Jackson officials said the drawing was being held to raise funds to help cover the humane society shelter's general operating expenses. The Corvair has been donated for use in the drawing, it was noted.

To buy tickets, or for more information, contact the humane society at 364-5156.

Thanks, Larry!



Lawrence Reynolds
IS RETIRING AFTER 5 YEARS
WITH JACKSON COUNTY!
WE WILL CELEBRATE HIS YEARS OF
SERVICE FROM
3 P.M. TO 4 P.M.,
ON AUG. 24, 2015
FIRST FLOOR OF THE
JACKSON COUNTY COURTHOUSE

Westar schedules Tuesday blackout in Denison area

Residents in the Denison area will be without electricity late Tuesday due to a power outage scheduled by Westar Energy, it was reported.

The power outage is expected to start at about 11 p.m. Tuesday and last through Wednesday morning, or about eight hours, Westar officials noted. The outage is necessary to allow Westar crews to safely replace a utility pole in need of repair at the

intersection of V6 Road and Seventh Street in Denison.

Denison area residents south of V6 and 198th roads will be impacted by this outage, which Westar said was scheduled for late at night to help mitigate some of the inconvenience caused by the outage. Affected residents have also been mailed notices of the upcoming outage, it was reported.

Public Notice

(First published in The Holton Recorder, Holton, Kan., on Monday, Aug. 3, 2015.)

NOTICE OF FARMING AND
GRAZING LEASE SALE
TO BE HELD
UNITED STATES
DEPARTMENT OF THE
INTERIOR
BUREAU OF INDIAN AFFAIRS
HORTON AGENCY –
HORTON, KS 66439

INVITATION FOR BIDS under sealed and oral auction of the Farming and Grazing Lease Sale on Indian trust property, conducted by the Horton Agency, Bureau of Indian Affairs on **August 26,**

2015.

SEALED BIDS only for farming and grazing lease on tracts of land on the Potawatomi Reservation will be received until the Lease Sale begins at 10 A.M., **August 26, 2015.**

For a copy of the advertised lease packet, which describes the tracts being offered, and sale conditions, please contact the Branch of Realty, Horton Agency, Horton, KS at 785-486-2161.

Bids are to be opened at 10 A.M. at the Rock Building adjacent to the Prairie Band Potawatomi Tribal Administration Office, 16281 Q Road, Mayetta, KS 66509.

ML61t3

Work In Comfort Year-Round



AGRICULTURE | EQUESTRIAN | GARAGE | COMMERCIAL

With Morton's Energy Performer Insulation Package
Discover the distinct advantage of a Morton building. Call today for information and to get started on your building project.

Eight offices serving Kansas
800-447-7436
mortonbuildings.com



©2012 Morton Buildings, Inc. Morton Buildings is a registered trademark of Morton Buildings, Inc. All rights reserved. A listing of GC licenses available at mortonbuildings.com/licenses.aspx. REF CODE 043.

800-447-7436 • mortonbuildings.com

HERE WHEN YOU NEED US.

We've provided comprehensive solutions for home and businesses for over 60 years. Call us—we're here 24/7.

M^{INC}Elroy's

PLUMBING • HEATING • AIR CONDITIONING

785.266.4870 • www.mcelroys.com

Today's Weather

Local 5-Day Forecast

Tue 8/18	Wed 8/19	Thu 8/20	Fri 8/21	Sat 8/22
 76/58 Thunderstorms likely. A few storms may be severe. High 76F.	 73/53 Partly cloudy. Highs in the low 70s and lows in the low 50s.	 81/59 Mainly sunny. Highs in the low 80s and lows in the upper 50s.	 86/69 Partly cloudy. Highs in the mid 80s and lows in the upper 60s.	 90/65 Afternoon thunderstorms. Highs in the low 90s and lows in the mid 60s.
Sunrise: 6:38 AM Sunset: 8:15 PM	Sunrise: 6:39 AM Sunset: 8:13 PM	Sunrise: 6:40 AM Sunset: 8:12 PM	Sunrise: 6:41 AM Sunset: 8:10 PM	Sunrise: 6:42 AM Sunset: 8:09 PM

AmericanProfile

// CELEBRATING THE AMERICAN SPIRIT //

Kansas At A Glance



BRING CUSTOMERS INTO YOUR PLACE OF BUSINESS!

You Could Be Advertising In This Prime Spot!

Call Allen, Shannon, Errin or David
at The Holton Recorder (785) 364-3141
and reserve this spot as a weather sponsor today!



School is almost in session!

Get ready to take a break and relax with a puzzle, journal or activity book!

Decorate a cake • Light a candle or Pamper your feet!

25% off Camille Beckman, Habersham & Puzzles!

Remember your sack...
DID YOU KNOW? We have LAYAWAY year round!



ROGER VARIETY
415 New York, Holton, Kan.
364-3321

Regular Hours:
Mon.-Fri.: 9 am-6 pm
Sat.: 9 am-5 pm
Sun.: Noon-4 pm



THE CENTER FOR MANUAL MEDICINE

"We Help you Help Yourself"

Outstanding Facility
Outstanding People
Outstanding Treatment

Dr. Jimmy Keen and The Center For Manual Medicine would like to thank Dr. Jeff Warner and Dr. Lyndsay Andrews for their service to the Holton Community at Glacial Hills Chiropractic!

Dr. Keen is excited for the opportunity to provide outstanding chiropractic care to Holton and the surrounding Communities at the Holton Medical Clinic starting in August of 2015.

www.ctrmm.com

James Keen DC
Holton Medical Clinic 1100 Columbine Dr.
Holton, KS 66436 (785) 364-2252

www.holtonrecorder.net

MEMORIES

Compiled from the Holton Recorder archives by Kendra McClain

5 Years Ago

Week of Aug. 16-22, 2010

Doris Foster of rural Hoyt has been active in 4-H for about 40 years as a leader with the Hoyt Livewires. Foster will be stepping down and devoting her energies to canning and making jams and jellies, as well as sharing her food preservation and baking skills with young people. Even at 88, Foster said she plans to continue working one-on-one with young people for as long as she can. She brought home a couple of open-class grand champion ribbons at this year's Jackson County Fair.

Although Holton veterinarian Dr. Tim Parks mainly practices on cattle, horses and domestic animals, his consultation with the care of a giraffe at the Topeka Zoo hasn't been too much of a stretch. Hope, a one-month-old giraffe at the zoo, has been in the spotlight recently after she was born with hyperflexed tendons in her ankle joints, affecting both of her rear hooves. Parks has been one of the resources interim zoo veterinarian Joe Kamer has turned to since Hope was born on July 11, as the two have known each other since high school.

Plans for the operation of a dog kennel near Whiting were approved on Thursday, Aug. 12, by the Jackson County Board of Zoning Appeals. Chris and Lorilee Thomas of rural Whiting plan to operate the kennel on property south of the northeastern Jackson County city.

Loretta Fitzgerald is taking over head coaching duties for Jackson Heights volleyball, it was reported.

Starting soon, Holton utility customers will have the ability to use their debit or credit cards to pay their electric and water bills, it has been announced.

10 Years Ago

Week of Aug. 16-22, 2005

Ray and Becky Campbell recently held a ribbon cutting ceremony at their new winery. The Campbells have grown grapes and made wine at their homestead east of Holton and north of Denison for nearly a decade. The award-winning winemakers are turning this hobby into a business, both for fun and to draw tourism and money to the area.

"Modern medicine with old-fashioned values." That is the motto of Dr. Roy Hall of Family Practice Associates in Holton. In October, Hall purchased an authentic doctor's buggy built in 1892, and about once a month, he drives the buggy on home visits to patients. His 10-year-old Haflinger horse, Molly, pulls the buggy most frequently (Hall has six other horses that run the pasture near his Whiting home).

When it's completed a year from now, the size of the new Prairie Band Potawatomi Nation health care center will be comparable to the size of Holton Community Hospital, and its quality will make it perhaps the best of its kind in the midwestern United States, it was reported. A 37,000-square-foot facility is planned on the 80-acre tract of land on 198th Road to serve an estimated 5,000 patients.

25 Years Ago

Week of Aug. 16-22, 1990

"A little dab of the Old West" remains in Jackson County on the Christian Longhorn ranch south of Holton. About 50 of the original American cattle graze there, eliciting nostalgic feelings in passersby. One such cow, Franz, a 15-year-old Longhorn, sports the trademark "Texas twist" horn shape, measuring 44 inches from tip to tip.

Holton could bustle with the excitement of Hollywood for two days in November if the Jackson County Commission agrees to a request from the Kansas Film Commission. According to chamber director Dianna Wilson, the Kansas Film Commission had contacted her about using the district courtroom for one scene in a film, and allowing a helicopter to land or hover over the roof of the Courthouse in another.

Tom Brown has resigned as Jackson County's appraiser, it was reported. In the letter, Brown stated that he was leaving to find new challenges, but he expressed appreciation for the commission's support and cooperation with him during reappraisal.

50 Years Ago

Week of Aug. 16-22, 1965

More abundant crops are in town! Mrs. Glen Frazier of Mayetta recently picked two large onions from her garden, each one weighing more than a pound. The largest one weighed a pound and one eighth and measured 12 inches around.

The Pilot Club of Holton is making it possible for adults to earn college credit by attending classes in Holton this fall. The University of Kansas will provide instructors for one or more classes if enrollments of 15 or more are assured.

Ethel Shaw has completed a new front for her building on the east side of the Holton Square. The front features redwood and paneled doors. The building houses Shaw's Vanity Beauty Shop and the Glen Rogers Insurance Agency.

The 4-H Fair parade on Wednesday, Aug. 18, was one of the largest in the history of the fair, it was reported. With far more floats and entries than any in recent years, the parade took more than 50 minutes to pass a given point.



With construction of the new Holton Elementary School in the vicinity of Holton's Colorado Elementary School closing the 500 block of Colorado Avenue, the creation of a cul-de-sac for parents who drop off or pick up their children at the school's front door was deemed necessary by school officials. Parents who drop off and pick up their children at that location are asked to enter the open part of the 500 block of Colorado (shown above) from the east on Fifth Street, drop off or pick up their children, then proceed to the cul-de-sac (shown at upper left), turn around and exit the area to the west on Fifth. The 2015-16 school year starts Wednesday.

Photo by Brian Sanders

Homestead's Beef for Seniors program making more than 80 deliveries this year

The delivery of more than 80 trays of beef to senior citizens participating in Homestead Affordable Housing's Beef for Seniors program has begun, according to Homestead executive director Tom Bishop.

On Thursday, about 32 trays of beef were delivered to residents at Homestead Senior Residences Holton, Trinity Place Senior Residences in Atchison, Bartell Place Senior Residences in Junction City and Homestead Senior Residences in Wamego, Bishop said. More than 50 trays are expected to be delivered to

day to Homestead's senior developments in Augusta, Harper, Marion, Mulvane and Haysville.

Homestead's Beef for Seniors program began in 2009 as a way to help people whose limited retirement income often makes it difficult to decide whether to buy food or medicine with their money. The program also helps local 4-H youth and supports the local economy, it was reported.

Through the program, banks and community members donate funds used to purchase steers raised by 4-H members at the Jackson County Fair's annual livestock auction. Many of the young people whose animals are purchased use the profits

from the sales to purchase more animals or put away for college, it was reported.

In the first year of the program, it was reported that four steers were purchased to provide nearly 3,200 lbs. of beef for senior citizens. Bishop said that at this year's livestock auction, eight steers were purchased, having an approximate hanging weight of 5,325 lbs.

"Thanks for your donations to help in providing for the quality of life and health for our senior tenants," Bishop said. "It means more than you will ever know."

For more information on the Beef for Seniors program, contact Bishop at 364-0110.

School Lunch Menus

Jackson Heights USD 335

Wednesday, Aug. 19: Breakfast – Breakfast pizza, fruit, juice and milk; Lunch – Hamburger on a bun, lettuce and tomato, sweet potato fries, fruit cocktail, rice crispy bar and milk.

Thursday, Aug. 20: Breakfast – Pancake on a stick, sliced pears, juice and milk; Lunch – Whole-grain corn dog, oven fries, garden spinach salad, seasoned peas, apple wedges and milk.

Friday, Aug. 21: Breakfast – Biscuit with sausage gravy, mandarin oranges, juice and milk; Lunch – Chicken nuggets, mashed potatoes with gravy, fresh broccoli, sliced pears, wheat bread (6-12) and milk.

Holton USD 336

Wednesday, Aug. 19: Breakfast – Breakfast pizza, sliced peaches, fruit juice choice and milk choice; Lunch – Pizza, tossed salad, cherry tomatoes, fresh orange, canned fruit choice and milk choice.

Thursday, Aug. 20: Breakfast – Sausage breakfast sandwich, mandarin oranges, fruit juice choice and milk choice; Lunch – Taco burger on a bun, tortilla chips (6-12), tomato salsa, leaf lettuce and tomato slice, refried beans, fresh banana, canned fruit choice and milk choice.

Friday, Aug. 21: Breakfast – French toast with syrup, applesauce, fruit juice choice and milk choice; Lunch – Chicken patty, whole-wheat roll and honey, mashed potatoes and gravy, green beans, sliced pears, fresh fruit choice and milk choice.

Royal Valley USD 337

Wednesday, Aug. 19: Breakfast – Pancakes, fruit and milk; Lunch – Pizza, corn, pepper strips, fruit and milk.

Thursday, Aug. 20: Breakfast – Breakfast pizza, fruit and milk; Lunch – Crispito with salsa, refried beans, fresh carrots, fruit and milk.

Friday, Aug. 21: Breakfast – Bis-

cuit and gravy, fruit and milk; Lunch – Hot ham and cheese on a bun, potato wedges, fresh broccoli, fruit and milk.

Prairie Hills USD 113

Thursday, Aug. 20: Breakfast – Sausage or egg biscuit sandwich; Lunch – Chicken nuggets and nachos, seasoned green beans, baby carrots, pineapple and milk.

Friday, Aug. 21: Breakfast – Breakfast pizza; Lunch – Galaxy cheese pizza, spinach garden salad, corn, rosy applesauce, whole-grain royal brownie and milk.

AREA CHURCH DIRECTORY

Please report any changes in service or personnel to the Recorder at 364-3141. Thank You.

Bethany Baptist Church

821 New York • 364-4533 • Pastor Ron Sellens
Youth Minister David Noland
Sunday: 9:30 a.m. Sunday school
10:15 a.m. Worship service
1 p.m. Sunday afternoon service
Wednesday: 7:15 p.m. Prayer meeting
Bucks Grove UM Church
Pastor: Charlotte Milroy • 234-4243
Sunday: 9 a.m. Church service
Christ's Church
Southern Heights Clubhouse • Pastor Jon Hanna
Information 364-4029
Sunday: 8:30 a.m. Fellowship
9 a.m. Worship

Church of the Nazarene

209 New York Ave. 364-3642 • Rev. Dan Donaldson
Sunday: 9:30 a.m. Sunday school
10:45 a.m. Worship service
Circleville Christian Church
7701 254th Rd., Circleville
Senior Pastor Randy Wickham
Assoc. Pastor Dan Dilmars
Alicia Spalding, Youth Leader
Sunday School: 9:15 a.m.
Sunday Worship: 8 a.m. Traditional Service
9:15 a.m. Cowboy Church
10:45 a.m. Contemporary Worship
Website - circlevillechristian.com
Email - circlevillechristian@yahoo.com

Circleville United Methodist

Pastor: Charlotte Milroy 234-4243
Sunday: 10 a.m. Worship Service
Community of Christ Church
512 Wisconsin • Pastor Dean Sharp
Sunday 10 a.m. Worship service

Delia Presbyterian Church

514 Jackson St. • Rev. Doug Phenix
Sunday: 9:30 a.m. Morning worship
Check sign board for other events.

Denison Bible Church

Pastor Tim Heckart
Sunday: 10 a.m. Sunday School • 11 a.m. Worship
7:30 p.m. Prayer Meeting
www.denisonbible.org

Denison Reformed Presbyterian

Rev. J. Edward Hindman • 935-2348
Sunday: 10 a.m. Bible class
11 a.m. Worship service
Lunch following the service
1:15 p.m. Afternoon Service

Evangel United Methodist Church

227 Pennsylvania Ave. • 364-3834
Sun.: 8:50 a.m. Life Journey (contemporary service)
10 a.m. Sunday school
11 a.m. Traditional worship service
Church - office@evangelumc.org
Pastor - pastor@evangelumc.org

First Baptist Church of Holton

404 Juniper, 364-3423 • Sr. Pastor: Tim O'Byrne
Director of Discipleship - Rhett Totten
Sunday: 9:15 a.m. Sunday School
10:30 a.m. Worship Services
5:15 & 6 p.m. Youth Groups
Wed: 10 a.m. Bible Study • 6:30 p.m. Choir
Friday: 7 a.m. Women's Breakfast
6:45 a.m. Men's Breakfast

First Baptist Church of Hoyt

Pastor David Burnworth • 986-6446
Wednesday night prayer: 7 p.m.
Sunday: 9 a.m. Sunday school
10 a.m. Worship service
7 p.m. Sunday evening worship

First Christian Church

5th and Wisconsin • 364-2545
Dr. Jim McCollough, Pastor
Sunday: 9:45 a.m. Sunday School
10:45 a.m. Worship

First United Methodist Church

1401 W. 4th • 364-3275 • Rev. Nancy Crowl
Sunday Schedule: 9:00 a.m. Sunday School
10:15 a.m. Worship
Wednesdays: 5:15 p.m. Reflect
www.1stumcholson.org

Holton Kingdom Hall of Jehovah's Witnesses

12350 214th Rd., Holton • 364-4279
Sunday Public Talk: 10 a.m. • jw.org

Hoyt United Methodist Church

Rev. Bev McCurdy • (c) 785-220-0711
Sunday School: 9 a.m. • 10 a.m. Worship
www.hoytunitedmethodistchurch.com

Immanuel Lutheran Church, Netawaka

Pastor Jeffrey Geske • 785-340-5635
9 a.m. Sunday Worship
10 a.m. Sunday School
10 a.m. Adult Bible Class
Lakeview Faith Chapel
Pentecostal Church

3.5 miles south of Holton on U.S. 75
Pastor Steve Cappelman • 364-2416
Sunday: 9:30 a.m. Sunday school
10:15 a.m. Worship service

Larkinsburg Christian Church

Rev. Mark Armstrong
Sunday: 9:30 a.m. Sunday school
10:30 a.m. Church service

Mayetta Christian Church

Ernest Coleman - Pastor
Sunday: Fellowship & Waffles: 8:15 a.m.-8:45 a.m.
Sunday school: 8:45 a.m.-9:30 a.m.
Prayer Circle: 9:30 a.m.-9:50 a.m.
Worship service - 10 a.m.-11:15 a.m.

Mayetta United Methodist

Rev. Howard Sudduth
Sunday: 9 a.m. Morning worship service and Sunday school

Netawaka United Methodist

Rev. Caren Loper
Sunday: 8:15 a.m. Worship
Onaga New Hope Lutheran Church, ELCA

Rev. Charlene Banes, Pastor

10:15 a.m. SS, Adult Bible Class
Bible Study: Tuesday @ 7 p.m.
Holy Communion 1st & 3rd Sunday
Our Lady of the Snows Church
Fr. Christopher Rossman

166 and "I" Road, Mayetta, Kan. • 597-5656
1st, 3rd, & 4th Sunday Mass 8:30 a.m.
2nd Sunday Mass 1 p.m.

Potawatomi Pentecostal Church

4.5 miles west on 134th Rd., Mayetta
Rev. Marcia Potts
Sunday: 10 a.m. Sunday school
10:45 a.m. Worship service

Pottawatomie United Methodist

Rev. Howard Sudduth
Sunday: 9:50 a.m. Sunday school
10:30 a.m. Worship

St. Dominic Catholic Church

Pastor: Fr. Christopher Rossman
416 Ohio, Holton, 364-3262
Saturday: 5:30 p.m. Mass • Sunday: 10:30 a.m. Mass
Confessions 30 minutes before mass.
www.jacatholicos.org

St. Francis Xavier Catholic Church

Pastor: Fr. Christopher Rossman
3rd & James, Mayetta, 966-2690/364-3262
Sunday Mass: 8 a.m.
Confessions 30 minutes before mass.
www.jacatholicos.org

St. Thomas Episcopal Church

512 Wisconsin, Holton • Rev. Ray Hartjen
Services on 2nd & 4th Sunday
Sunday Services: 9 a.m.
Post Service Fellowship Breakfast
785-224-8798
stthomasholton@holtonmail.com

Soldier Christian Church

834-5750
Ron Ahlgren, Minister
Luke Schreiber, Youth Minister
Sunday: Sunday School: 9:30 a.m.
Church Services: 10:30 a.m.

Jr. & Sr. High Youth Group: 5 p.m.

St. James Catholic Church
306 5th St., Wetmore • Pastor Father Hammes
Saturday Mass: 6:30 p.m.
Confessions: 30 min. prior to mass

Trinity Lutheran Church

401 Cheyenne
Pastor Brian Stark 364-2206/364-2029
Sunday School: 9:30 a.m. Adult Bible Class: 9:45
Worship: 10:45 a.m.

Wetmore Bible Church

217 Iowa St., Wetmore
Pastor Gary Heitz • 866-2444
Sunday: 10 a.m. Sunday school (for all ages)
11 a.m. Worship Hour

11:30 a.m. Children's Church • 7 p.m. Adult Bible Study
Tuesday: 1:30 p.m. Women's Bible Study
Wednesday: 7 p.m. Youth Group (Jr. High & HS Ages)
8 p.m. Bible Study

Wetmore United Methodist

Pastor Seong Lee
(785) 866-2512 Parsonage • 866-5556 Church
Sunday: 9 a.m. Sunday school
9:40 a.m. Worship service

Whiting Baptist Church

Seth Montgomery, Pastor
Sunday: 9 a.m. Sun. school • 10 a.m. Worship service
Whiting United Methodist
Rev. Caren Loper

New Hope Family Church

515 Iowa, Holton
Interim Pastor: Sterling Hudgins
Wednesday Meal: 6:30 p.m.
Wednesday Service: 7:15 p.m.
Sunday Worship: 6:30 p.m.



This church directory is sponsored by:

Holton Family Health Clinic

1603 W 4th St., Holton, KS • (785) 364-3205

a division of



Community HealthCare System, Inc.™

"To enrich the health and lives of the people we serve"

16 School Bus Safety Tips

tips for a safer bus ride.

- Be aware of moving traffic.
- Leave plenty of time to get to the bus stop. Don't rush.
- Pay attention to your surroundings; listening to your music player or playing handheld video games may lead to distractions and potential injury.
- Don't wear a hood as it makes it more difficult to hear and see traffic.
- Stay at a safe distance from the street and don't play around while waiting for the bus.
- Stay 10 giant steps away from the outside of the bus while the bus is pulling up so the driver can see you.
- Wait for the bus to stop completely before you move towards it to get on, or before you stand up to get off.
- Be cautious of clothing or backpacks with drawstrings, toggles, or key chains that can get caught on the bus handrails and doors.
- Hold the handrail going up and down the stairwell so you don't trip.
- Find a seat and sit down as soon as you're on the bus.
- Be courteous and respectful to your driver. Listen to directions.
- Don't put your head, arms, papers or anything out the window.
- Don't pick up anything you drop near the bus. The driver may not see you. Instead, ask the driver for help.
- Wait to cross the street until the driver lets you know it's OK.
- Stay away from the bus wheels at all times – the driver cannot see you.
- If your parent meets you at the bus stop, make sure he or she waits on the same side of the street where you will be dropped off so you won't have to cross the street.

This advertisement sponsored by:

785-362-9331 • 1-800-346-9084 • www.giantcomm.net

Introducing
Lesley Howe Teller
Holton branch

We are glad to have Lesley working as a teller at the Holton Hwy. 75 branch. All the employees there look forward to serving you.

DENISON STATE BANK

207 Arizona Ave, Hwy 75 Holton
785-364-4222 / dsbks.com

In Memory Of
Ramona L. White
12-10-37 - 8-17-11

It's been 4 years since you left us. God saw she was getting tired and a cure was not to be. So he put his arms around her and whispered "come with me." With tearful eyes we watched her suffer and saw her fade away. A golden heart stopped beating, hard working hands laid to rest. God broke our hearts to prove to us life only takes the best.

All our love,
Your family

OPINION

Moving Guantanamo Bay detainees around does not solve anything

One of President Barack Obama's first acts in office was to promise that he would close the U.S. military prison at Guantanamo Bay in order to "restore the standards of due process and the core constitutional values that have made this country great even in the midst of war, even in dealing with terrorism."

Six years later, the facility located within Guantanamo Bay Naval Base, which fronts on Guantanamo Bay in Cuba, is still open, although the population has dwindled to 116, 52 of whom have been cleared for transfer if security conditions can be satisfied.

Following the terrorist attacks on 9/11/2001, the Guantanamo Bay prison was established in January 2002 "to detain extraordinary, dangerous persons, to interrogate detainees in an optimal setting, and to prosecute detainees for war crimes."

The Bush administration asserted the detainees held at Guantanamo prison were not entitled to any of the protections of the Geneva Convention. U.S. Supreme Court rulings have determined otherwise, however.

Now the Obama administration says it is preparing to present Congress with a new plan to close the facility, and the federal prison at Leavenworth in our state is being considered as a possible place to transfer the detainees.

The problem with Guantanamo has never been just its location. The prison has become a symbol of a denial of due process.

Opposition to closing Guantanamo involves two issues. One is whether even "low-risk" detainees should be released to their homelands or to some other country. The other is whether inmates — including dozens of more dangerous detainees the administration says it can neither release nor try — should be moved to the United States.

The current administration argues that "supermax" prisons in this country provide adequate protection for public safety.

But, again, that is beside the point.

Guantanamo has been a stain on America's reputation and a recruiting tool for terrorists. Moving the detainees to Kansas or anywhere else will not wipe the stain away.

In a 2013 speech, Obama acknowledged that indefinitely detaining suspected terrorists without a trial was a problem but said it could be resolved "consistent with our commitment to the rule of law."

My view is that the U.S. should either continue to hold them at Guantanamo Bay without charge or trial — or charge them and take them to trial. But don't move these detainees. That doesn't solve anything.

David Powls

We truly need to get our good paying jobs back

By Glenn Mollette

America is only as good as our workers and doers. Dreamers are critical. Faith is vital. However, faith and dreams without works are dead.

Everywhere I travel these days I see Nigerians, Kenyans, Egyptians, Asians and of course Hispanics doing jobs all over the United States.

They seem to occupy 90 percent of the maid service jobs in hotels and continue to dominate the taxi industry.

In many areas the Chinese and Mexicans appear to be the ones opening new restaurants. Two of the best restaurants in my town are the local Mexican and Chinese restaurants. Farmers desperate for workers and cheap labor bring Mexicans into America legally by the thousands on H-2 Visas.

Farmers reportedly say the Mexicans will do the cheap labor jobs that Americans won't do.

I keep hearing that these Internationals are doing the jobs that Americans won't do.

Why is this? Too many Americans are quite happy to survive on a government check and food stamps rather than work.

Disabled Social Security, SSI and food stamps are disabling this nation. Too many people are willing to survive rather than work and try to better themselves.

For all the people who truly deserve these benefits I say God bless you. I'm glad America can help.

For the rest of the liars and thieves who work harder at cheating the system rather than trying to earn a paycheck, it's time that your lazy ways end and you start paying back all the money you've stolen from your country.

President Jimmy Carter, age 90, has demonstrated an ethic of hard work. The president's retirement package is generous. He could have lived in an exotic retirement spot the rest of his life but he kept working.

President Carter's labor for Habitat for Humanity has been remark-

able plus all of the other national and international diplomatic efforts that he has performed. Thus, Carter has remained sharp and has continued to be a working American.

Carter recently announced he has liver cancer that has spread to other parts of his body. Our thoughts and prayers go out to him and his family as he now battles for his life.

If abled Americans would go back to work and start doing some of these jobs that Internationals are doing we could begin to take back some of our country.

Many of the illegals would go home because there would not be work for them to do. They are surviving well here because there is so much work to do!

Americans would become healthier physically and mentally. Many Americans have just enough financial support to watch television all day and then do little else with their lives.

Millions of Americans are on massive amounts of medication and taking antidepressants and pain medicine each day. They know their lives are going nowhere and many become suicidal.

In the meantime their eating and exercise habits are unhealthy and they become obese with declining health. This is further dragging our nation down because it costs hundreds of millions each year to treat all the people who are on welfare. If they were working to feed themselves they would be doing something meaningful. They would be out of the house and their health would be better thus saving the nation billions in medical and other welfare costs.

Homebound welfare Americans also produce children. Many of these children become second-generation welfare recipients because that's all they have learned to do. This vicious cycle is eroding the very core of America that made us great and that core is the heart to work.

We truly need to get our good paying jobs back in America. However, we are only going to lose more if we aren't willing to work.

Note: Glenn Mollette is an American syndicated columnist and author. He is the author of 11 books and is read in all 50 states.



LETTER TO THE EDITOR

Dear editor,
Thank you so much for your coverage of us as Grand Marshals of the fair parade! We had many comments about our "story" and picture.

We thoroughly enjoyed the whole event and being a part of the fair in the Heritage Complex.

We are also very appreciative of your wonderful fair addition over the years, plus extra articles before and after. You support Extension and 4-H very well. Thanks!

Jeri and Corky Albright
Delia

NOTE: Send your letters to us at P.O. Box 311, Holton, KS, 66432 or e-mail them to us at holtonrecorder@embarqmail.com

Scholarship awarded

The Bottenberg family has announced the recipients of the 2015 Warren E. Bottenberg Memorial Scholarship Fund.

A total of \$2,500 was awarded this year. The recipients are Emma M. Kelly, a 2012 graduate of Royal Valley High School attending Kansas State University, and Paige J. DeLay, a 2015 graduate of Holton High School attending The University of Kansas.

Applicants were required to write a 250-word essay, attend a Kansas college or trade school, be a graduate of a Jackson County high school and have maintained a GPA of at least 1.75.

The next scholarship will be awarded in August 2016.

Public Notice

(First published in The Holton Recorder, Holton, Kan., on Monday, Aug. 17, 2015.)

IN THE DISTRICT COURT OF
Jackson County, KANSAS
CIVIL DEPARTMENT

Bank of America, N.A.

Plaintiff,

vs.

Jared Gudenkauf, et. al.

Defendants,

Case No. 15CV43
Court No.
Title to Real Estate Involved
Pursuant to K.S.A. §60

NOTICE OF SALE

NOTICE IS HEREBY GIVEN, that under and by virtue of an Order of Sale issued to me by the Clerk of the District Court of Jackson County, Kansas, the undersigned Sheriff of Jackson County, Kansas, will offer for sale at public auction and sell to the

highest bidder for cash in hand at the 1st Floor Lobby of the Jackson County Courthouse, Kansas, on September 14, 2015 at the time of 9:00 AM, the following real estate:

A TRACT OF LAND LOCATED IN THE SOUTHWEST QUARTER OF SECTION 26, TOWNSHIP 9 SOUTH, RANGE 16 EAST OF THE 6TH P.M., JACKSON COUNTY, KANSAS, DESCRIBED AS FOLLOWS: COMMENCING AT THE SOUTHWEST CORNER OF SAID SECTION 26, THENCE NORTH 89 DEGREES, 58' 13" EAST ALONG THE SOUTH LINE OF SAID SOUTHWEST QUARTER 435.60 FEET TO THE TRUE POINT OF BEGINNING, SAID POINT BEING THE SOUTHEAST CORNER OF AN EXISTING TRACT RECORDED IN BOOK 243 PAGE 210 IN THE REGISTER OF DEEDS OFFICE; THENCE NORTH 8 DEGREES, 37' 22" EAST ALONG AND EXTENDING THROUGH THE EAST LINE OF SAID TRACT 549.82 FEET, THENCE NORTH 89 DEGREES 58' 13" EAST PARALLEL TO THE SOUTH LINE OF SAID



(TOP LEFT PHOTO) The premium on Judd Nelson's reserve grand champion meat goat entry at the 2015 4-H Premium Livestock Sale was purchased by Foster Ford (represented here by Scott Foster and Jordan Foster), Rutherford and Peterson Dental, Black Gold Insulation and Harshaw Tax Service. (TOP RIGHT PHOTO) The premium on Koy Tannahill's grand champion meat goat entry was purchased by Holton Livestock Exchange and Joe and Kathy Kennedy. Shown in the photo with Tannahill are, left to right, Dan Harris, owner of Holton Livestock Exchange, Joe Kennedy and 4-H ambassador Brianna Cattrell. (AT LEFT) The premium on Cole Kucan's reserve grand champion beef entry was purchased by Lifetime Eye Care (represented here by co-owner Leslie Gallagher). Complete results for the premium livestock sale will be published in Wednesday's edition of The Recorder, along with more photos from the livestock sale.

Photos by David Powls

Card Shower

Kay Bottom of Circleville, shown at right, will celebrate her 80th birthday on Saturday Aug. 22, 2015.

Cards will reach her at P.O. Box 117, Circleville, KS 66416.



period as provided by law, and further subject to the approval of the Court.

Jackson County Sheriff

MILLSAP & SINGER, LLC

By:

Chad R. Doornink, #23536
cdoornink@msfirm.com
Jason A. Orr, #22222
jorr@msfirm.com
8900 Indian Creek Parkway,
Suite 180
Overland Park, KS 66210
(913) 339-9132
(913) 339-9045 (fax)

ATTORNEYS FOR
PLAINTIFF

MILLSAP & SINGER, LLC
AS ATTORNEYS FOR Bank of America, N.A. IS ATTEMPTING TO COLLECT A DEBT AND ANY INFORMATION OBTAINED WILL BE USED FOR THAT PURPOSE.

ML65t3

THE HOLTON RECORDER

Serving the Jackson County community for 148 years

ESTABLISHED 1867

Published semi-weekly at 109 West Fourth Street, Holton, Jackson County, Kansas 66436. Periodical postage paid at Holton (Kan.) Post Office. phone: (785) 364-3141; toll free: (888) 364-3141; fax: (785) 364-3422; e-mail: holtonrecorder@embarqmail.com

Postmaster: Send address changes to the Holton Recorder, P.O. Box 311, 109 West Fourth Street, Holton, Kansas 66436. USPS 247-840

Subscription rates: One year in Jackson County \$44 (42¢ per issue); elsewhere in Kansas \$51.50 (50¢ per issue). Out-of-state, \$58 (56¢ per issue). Prices include tax. Single copy, \$1. Subscriptions may be transferred but not refunded. For information about online only subscriptions, go to holtonrecorder.net.

*Even when it upsets and overwhelms us,
truth above all.*


Kansas Press Association
Member 2015

 PRINTED WITH
SOY INK


Member

STAFF

Editors and Publishers: David and Connie Powls
Advertising Sales: Shannon Schmile, Errin Edwards and Allen Bowser
City Editor: Brian Sanders
County Editor: Ali Holcomb
Sports Editor: Kelly Brecknitch
Advertising Design: Leslie Paine
Business Office: Kendra McClain & Michael Powls
Production Assistant: Rhein Murphy

RECORDER SUBSCRIPTION FORM

New _____ Renewal _____ Gift _____

Jackson County Residents - \$44 (42¢ per issue)
Elsewhere in Kansas - \$51.50 (50¢ per issue)
Out of State - \$58 (56¢ per issue)

Name _____

Address _____

Zip Code _____

Phone _____

E-Mail _____

Mail to The Holton Recorder,
P.O. Box 311, Holton, Kan. 66436
Thank You

OBITUARIES



McMurphy

Patricia Sue McMurphy of Holton ended her fight against cancer on Aug. 12, 2015.

She was born on Nov. 9, 1963, in Onaga. She graduated from Jackson Heights High School in 1982.

She did daycare and worked at a casino for several years. She enjoyed spending time with grandchildren, gardening, and baking.

She was preceded in death by both parents, Loren and Cora Lee Dibbern.

Survivors include daughters, Ashley Brownell, Jennifer Brownell (Gary) and Cassandra Lierz (Lane); grandchildren, Maverick, Phoenix, Rylie, Carson, Katelyn, Conner and Wyatt; siblings, Ray, Kenny, Carol, Linda and Paul; and nephews and nieces.

She will be laid to rest on Friday, Aug. 21 at Olive Hill Cemetery (10 miles west of Holton). Graveside services will be held at 11 a.m. A celebration of life will follow at Circleville Christian Church.

In lieu of flowers, donations may be made at Farmers State Bank in Fairview (412 West Commercial St., Fairview, KS 66425) under the Patricia McMurphy fund to help with final expenses.

Holton Recorder 8/17/15 ▲



DeLay

Orville S. DeLay, 93, Holton, died Saturday, Aug. 15, 2015, at Holton Community Hospital.

He was born July 10, 1922, near Odessa, Mo., the son of James and Bertie Palette DeLay. He graduated from Odessa High School in 1939.

Mr. DeLay enlisted in the Army Air Corps in 1942. He was engaged in 50 combat missions in the Mediterranean Theatre during World War II as a flight engineer and top turret gunner on a B-17 aircraft. He was awarded numerous medals, including the Distinguished Flying Cross. He later was a carpenter in Holton and the surrounding area for many years.

He was a former member of First Presbyterian Church in Holton and later was a member of First United Methodist Church. He was also a member of Holton VFW Post 1367 and Holton Masonic Lodge 42, A.F.&A.M.

He married Martha May Mark on July 10, 1949, in Lexington, Mo. She survives.

Other survivors include two sons, Andy J. DeLay and wife Sherry, Abilene, and Ray O. DeLay and wife Ronda, Holton; and five grandchildren, Ashley DeLay, Emily Hernandez, Rachel Haught, Jackson DeLay and Paige DeLay. He was preceded in death by his parents and two sisters, Nellie Irene Campbell and Alice J. Hoover.

Funeral services will be held at 10:30 a.m. Wednesday at Chapel Oaks Funeral Home in Holton. Burial with military honors will follow in Holton Cemetery. Mr. DeLay will lie in state until service time at the funeral home, where family and friends will meet from 6:30 p.m. to 8 p.m. Tuesday.

Memorial contributions may be made to First United Methodist Church or Holton VFW Post 1367, sent in care of Chapel Oaks Funeral Home, P.O. Box 1034, Holton, KS 66436.

Holton Recorder 8/17/15

Grau

Karla Grau, 59, Mayetta, died Friday, Aug. 14, 2015, at her home.

She was born Nov. 24, 1955, in Holton, the daughter of Elmer John and Ada Marie Boyce Winters. She graduated from Holton High School and later Topeka Barber School, then obtained her associates degree from Topeka Technical College.

Mrs. Grau was a barber, a supervisor for the Kansas Department of Revenue and a tax auditor and she also owned and operated Karla's Barber and Style Shop.

She married James Alan Grau on June 15, 1980, in Las Vegas, Nev. He died Oct. 3, 2007.

Survivors include a son, Shane Grau and wife Angie, Topeka; a daughter, Shelby Grau and husband Brett James, Tecumseh; a sister, Denise Streit, Holton; a brother, Butch Winters, Topeka; and three granddaughters, Mara and Lorelai Grau-James and Charlotte Grau.

Funeral services will be held at 10 a.m. Tuesday at Mercer Funeral Home in Holton. Interment will follow in Memorial Park Cemetery in Topeka. The family will greet friends from 6 p.m. to 8 p.m. today at the funeral home.

Memorial contributions may be made to Scleroderma Foundation Inc., sent in care of Mercer Funeral Home, P.O. Box 270, Holton, KS 66436.

Holton Recorder 8/17/15



Calwell

William Riley "Bill" Calwell, 107, of Topeka, passed away on Thursday, July 16, 2015, at Aldersgate Village in Topeka.

He was born June 25, 1908 in Wetmore, and was the oldest man in Kansas at the time of his death.

A celebration of Bill's life will be held at 2 p.m. Friday, Aug. 21, 2015, in Wesley Hall at Aldersgate Village. Prior to the celebration, a luncheon will be held at 12 p.m. at the Christ Lutheran Church in Topeka.

Memorials are suggested to Christ Lutheran Church or Aldersgate Village and may be left in care of Mercer Funeral Home, P.O. Box 270, Holton, KS 66436. Mercer Funeral Home in Holton is honored to assist the family.

To view a full obituary, please visit www.mercerfuneralhomes.com

Holton Recorder 8/17/15 ▲

Holton Legion Auxiliary holds meeting

By Jessica Buhrman
Unit Secretary

The American Legion Auxiliary Unit 44 held a meeting on July 24. There were seven senior members and one junior member present. Jessica Buhrman shared a prayer.

Bernadette Spicer led the pledge of allegiance. The preamble was recited.

Roll call was taken, and the minutes and treasurer's reports were read and accepted.

Old business included that cookbooks are available from auxiliary members for \$10 each. Paula and Jessica have some on hand.

The junior conference will be held on Aug. 22. Unit 44 Auxiliary will attend and have a float in the parade.

Officer memberships were paid. Jessica will donate a second small file cabinet for the office, and Jessica's friend, Brandy Snead, donated cards and notepad to the unit.

The meeting adjourned. The next meeting with be at 7 p.m. on Aug. 19.

Thanks for reading The Holton Recorder!

Quality Monuments

75 Highway In Holton Call Linda for information. 785-364-4454



mon.design.linda@gmail.com

Do You Have KPERs?

Let Us Show You
How To Save \$800

(Call, email or come by to find out more.)



1101 West Fourth
Holton, Kansas
(785) 364-2626

Email: mfh@embarqmail.com
www.mercerfuneralhomes.com

Tudor

A celebration of the life of Phyllis Watkins Tudor, 91, will be held at 2 p.m. Saturday, Sept. 5, at the Overbrook United Methodist Church. She died Friday, Aug. 14 at Brookside Manor in Overbrook.

She was born June 4, 1924, in Shelby County, Ohio, the fourth of five daughters of Philemon Allen and Elizabeth Pfisterer Watkins. She attended schools in rural Ohio, graduating from Jackson Center High School in 1942. On May 13, 1944, she was married to William G. Tudor, who was serving in the U.S. Navy during World War II.

Together they served Evangelical United Brethren and United Methodist churches in Batavia, Ill.; Drummond, Okla.; and Leonardville (along with Green, Bethany-Hillside and Countryside), Holton and Overbrook. The Rev. and Mrs. Tudor served the Evangel United Methodist Church in Holton from 1967 to 1982 before moving to Overbrook, where they retired in 1989.

Phyllis served as church secretary, taught Sunday school for many years and was active with the United Methodist Women. With her husband, she led many "Tudor Tours," taking church groups of youth and adults on trips to every state in the continental U.S. plus Alaska and Canada. She proudly completed the Menninger Bible Study course in 1971.

She is survived by her husband, Bill, of Overbrook; two sons, Bill (Lorie) of Wilmington, Del., and Steve (Nancy) of Topeka; and two daughters, Phyllis (Ed) Daniels of Fort Worth, Texas, and Imozelle (Jim) McVeigh of San Diego, Calif.

She is also survived by her grandchildren, Martha (Fred) McFarland, Anna (Tim) West, William C. (Miranda) Tudor, Chelle (Jeff) Reiff, Stephanie (Brian) Wolf, Betsy Tudor, Michelle (Mark) Stoddard, Gwendelyn Daniels, Kristina (John) Sprey and Kevin Daniels; and great-grandchildren, Ruth McFarland, Caleb, Austin, Emily and Paige Tudor, Garrett, Karlie and Ethan Stephens, David and Tara Norton; Sean Stoddard, Cody Wolf, Zachary and Justin Lum, Kaitlyn, Zane and Taylor Sprey, and Cadence Daniels. One sister, Miriam Lescalette of Zanesfield, Ohio, also survives, along with many nieces and nephews.

In lieu of flowers, the family suggests memorial contributions to the Forest Park Foundation or the church of your choice. Lamb-Roberts Funeral Home in Ottawa is in charge of arrangements.

Holton Recorder 8/17/15 ▲

Obituary guidelines

When submitting obituaries to *The Holton Recorder*, please remember that survivors listed in free obituaries are limited to those who are related to the deceased either by blood or by marriage. "Companions," "special friends," "life partners," pets and godparents do not fit into either category. However, if you would like the names of non-relations to be printed with the obituary, call *The Recorder* at (785) 364-3141 to make arrangements for a paid obituary.

Tommy James to perform at Prairie Band Casino

Tommy James and The Shondells will be performing at the Great Lakes Ballroom at Prairie Band Casino and Resort at 7 p.m. on Sunday, Aug. 23, it has been reported.

"Crimson & Clover," "Crystal Blue Persuasion," "I Think We're Alone Now," "Hanky, Panky," "Draggin' The Line," "Mony, Mony" and "Sweet Cherry Wine" are just a few of Tommy James' many hits.

The band has 23 gold singles, nine platinum albums and has sold more than 100 million records worldwide.

In addition to their 32 Billboard Hot 100 charting hits, many of the band's songs have been covered by major artists around the world including Prince, Billy Idol, Joan Jett, REM, Bruce Springsteen, Dolly Parton, Carlos Santana, Boyz II Men, Kelly Clarkson, Cher and even The Boston Pops.

Tommy James' music can be heard in 27 motion pictures and numerous television shows including "Breaking Bad," "Criminal Minds," "The Simpsons" and "The Goldbergs."

Tommy's critically acclaimed autobiography, "Me, The Mob and The Music," which was listed in Rolling Stone's top 25 best music memoirs,

is now in development for a film with producer Barbara De Fina. Tommy also has his own show on YouTube, "Inside Tracks with Tommy James."

His career has spanned almost 50 years, and his music continues to evolve and cross new generations. At the recent Rock and Roll Hall of Fame induction television show, Tommy performed with Joan Jett and was backed up by Miley Cyrus and Dave Grohl during a performance of "Crimson & Clover."

BMI recently lauded Tommy for his success with the presentation of five "Million-Air" awards. His music has been played more than 21 million times on air.

Tommy is now back in the studio working on his new acoustics album titled "Acoustitronics," creating some new recording techniques.

Tickets for Sunday's performance can be purchased on the day of the event or online at the casino's website. All attendees must be 21 years of age or older and have a Prairie Band players card to enter.

**SEPTEMBER
SUBSCRIPTIONS
ARE NOW PAYABLE**

Thank You

The family of Carl Bohnenkemper wishes to express their gratitude for the outpouring of support received during Carl's illness and his passing. A special thank you to Kansas Hospice of Topeka, Lynn for her special care of Carl, Mercer Funeral Home staff, Pastor Craig Scheidecker, the staff at Colmery O'Neil VA Hospital and VFW Post 1367 for providing military honors and flag presentation. Carl was a good man, a good husband, father, grandfather, great-grandfather and friend who will be dearly missed by all who knew him and loved him.

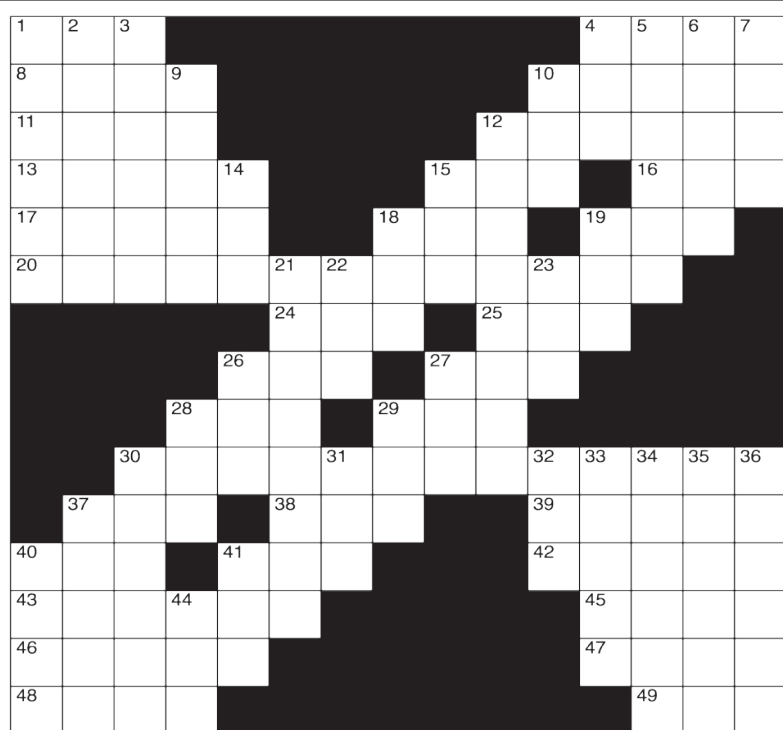
Thelma, Brenda & Carl, Mark & Laura and Marcia

Heart

Gifts & Décor to Home

South Side of Square - Holton
Hours: Tues.-Fri. 9-5 • Sat. 10-2 • Sun. & Mon. Closed
www.Facebook.com/HeartToHomeKS • 785-362-7111

CROSSWORD PUZZLE



CLUES ACROSS

- Munich jazz label
- A lump of clay
- Showy ornament
- ___ Girl, brand of beer
- Aka Kissavos
- Warmest season of the year
- 2nd longest Bulgarian river
- Records the brain's electric currents
- Cutting part of a drill
- Colorful Italian city
- The last part
- Pouch
- "Mad Men" creator
- No (Scottish)
- Actress Farrow
- Focus cars (Co. initials)
- Snakelike fish
- One point E of due S
- Grey sea eagle
- Female "Mad Men" star
- Actress Lupino
- Time units (abbr.)
- Moses' elder brother
- 4th Caliph of Islam
- Treaty of Rome creation
- Theatrical play
- Told on
- "To tie" in Spanish
- Amidst
- Exchange for money
- Bar game missile
- Pluto or ___ Pater

CLUES DOWN

- Selfishness
- Cinnamon source
- Revolutionary firearm
- Br. university town river
- Lower back region
- Relating to oil
- Soil
- Cause to lose courage
- Pushed in nose dog
- Dregs
- Part of a cheer
- Point midway between NE and E
- Female sheep
- Main
- In a way, tangled
- WWII female grunts
- Nothing
- Hoover's organization
- Before
- Patti Hearst's captors
- One point S of due E
- Film splicer & viewer
- Something curved in shape
- Possessed
- Patagonian hares
- Gave a formal speech
- Resident of Mogadishu
- Tangles
- Annona diversifolia
- Mures river city
- Same as 15 across
- Explosive

QSI
Quality Structures, Inc.
Specializing in Complete Post Frame Buildings

\$UMMER \$AVINGS

BLOWOUT!

800-374-6988

AUGUST BUILDING SPECIAL

30x40x10
\$20,500*
*Overhang & Cupola not included

INCLUDES:

- 4" Concrete Floor
- 4" Wainscoting
- Two 9'x8' Garage Doors
- One 3' 9"-Lite Entry Door
- Two 3x3 Insulated Windows
- Vented Ridge
- Drip Stop

Call today about ALL our BUILDING SPECIALS!

Price Includes: Delivery & Install on your level site. Travel charges may apply.

www.qualitystructures.com

Recorder Classifieds Get Results! Call 364-3141

SPORTS *Monday*

“Fall ball” opportunity to be offered to area softball players starting next month

If you organize it, they will come. At least, that’s what Holton High School softball coach John Deitrich is hoping for as he moves forward with plans for the “Lila Belle (LB) Fall Softball League” in Holton to begin competition this September.

For the inaugural season, sign-up is open to students entering eighth through 12th grade and Deitrich noted he would like to be able to, optimally, field six teams in the first season.

Deitrich has done the groundwork this summer in working to establish the league, creating a limited liability corporation (LLC), arranging for team coaches, lining up insurance coverage and getting the all-clear from the Holton Parks and Recreation department for the fall games to be held at Chandler Park, which will come at no cost to the league. The one variable that the coach can’t account for, though, is players.

“It’s yet to be seen if the numbers are going to be there or not, but if you don’t try, you never know,” Deitrich said.

This has been an idea the coach has been kicking around for a few years and he pushed for this fall if for no other reason than the experience it affords local players.

“There’s kind of a need for it. I’ve talked to five area coaches and four league coaches who think it’s a great idea to try to generate a few more innings,” Deitrich said. “Our goal’s to try to get them 14 more games in the fall in kind of a low key, stress-free situation.”

Deitrich took his inspiration from a fall league in Lawrence and noted he is hoping to attract players from the surrounding areas, not just Holton, though he hopes the location helps in the sign-up process.

“If we center the league in our community, hopefully we can generate enough interest with local kids that we can get them a few more

innings and get them a little more time,” Deitrich said. “Even if they’re not playing with their teammates, they’re playing, and that’s kind of the purpose.”

“I think a lot of people back away from a lot of competitive softball opportunities just simply because they fear the expense. They fear the expense of going up and down the road in the summer; going to Wichita, going to Kansas City and those types of things. “This just has to be as simple and as low key as it can,” Deitrich said.

While the goal is to draw as much interest as possible, Deitrich noted the league also has to be very careful in following Kansas State High School Activities Association guidelines for non-school sports, especially in its first year.

That is partly why Deitrich had to work to line up coaches, as no school coaches can coach teams with their potential players during the school year outside the season of the sport.

KSHSAA also mandates that no more than five members of a school team (including A, B, C, 9th, JV and varsity) from the previous season can play together on a non-school team during the school year outside the season of sport and those rosters must be set, with no rotation from week to week or game to game.

“We have to make sure, seeing it’s a new thing, that we keep everything on the up and up. It has to be as transparent as it can possibly be when it comes to obeying KSHSAA rules,” Deitrich said.

Game play will follow KSHSAA rules, as well, with the inclusion of the flex/designated player roster spot and courtesy runners, with coaches given the option of roster hitting or batting nine. Run rules will be 12 after three innings, eight after five innings and one after seven.

All other High School Federation rules will apply and no new innings

will begin upon completion of the 75-minute time limit, though innings in progress will be allowed to finish.

At its core, though, this league is about the players. It’s about the experience, making room for some players that may get pushed to the fringe on summer league teams and perhaps, according to Deitrich, making some lifelong friendships.

In addition, the HHS coach noted it could create some recruiting benefits in the near future.

“The other thing that it promotes is it promotes some of the college people, who don’t have things going on Sunday afternoon to be able to force themselves up, come to Holton and watch some kids play,” Deitrich said.

Already, the HHS coach said he has heard from some college coaches who will be watching the formation progress of the league and noted they may be interested in bringing their teams up to face an all-star squad from the league in a couple of years.

Deitrich noted he clearly sees the benefits this type of league could provide for his team, but it applies to any area players who take part in it. He noted there has been a surge of solid players from the area the past few years and, even at the most basic level, they can get something out of this.

“When they finish the summer season, some of them still want to play. They don’t want to practice, they want to play, so this gives them another opportunity to get out, get dirty, get grass stains on their pants and have some fun with some kids and try to get better,” Deitrich said.

With enough participation, Deitrich said the Holton community could get something out of this as well in regards to economic stimulus or just having another entertainment option over the weekend.

Currently, the league is set to have six weeks of games starting on Sept.

6 and running through Oct. 11 (with a make-up date, if needed, reserved for Oct. 18). Games will be played on Sundays starting at 10 a.m. and ending at approximately 6:30 p.m. Optional practice dates are also slated for Wednesdays during the season, starting on Sept. 2, from 6 to 8 p.m.

Projected rosters are to be made up of 12 players (three pitchers, two catchers, four infielders, three outfielders) and registration for players will cost \$125. The registration deadline is Aug. 24 (with a \$10 late fee going into effect after that date). Players can sign-up and find out more about the league at www.lbsoftballfallleague.weebly.com.



Holton’s Ron Strader (shown above) nears the finish of the biking portion of a recent triathlon in Rafter’s Park. Strader, who has a storied competitive career, has influenced numerous triathletes and runners in the community.

Submitted photo

Strader sees success reflected in strong running community

Athletes taking part in Holton’s most recent triathlon got a rare treat as highly decorated local runner Ron Strader, recently retired from competition, filled in at the last minute and took part in the biking portion of the event.

Even among Holton runners who have achieved so much in their own right, the 75-year-old Strader is in rarified area.

While Strader stepped away from competition a few years ago, his numbers are still impressive as he has run in 70 marathons and done so in 42 of the 50 states, while also competing in one international event (the London marathon).

On average when he was competing, Stader said he would race in about five marathons a year and 20 miscellaneous other races (5K, 10K, half marathon, etc.).

It all started nearly 40 years ago after taking in the KU Relays, according to Strader. While he was running and training with kids in Holton at the time, seeing the athletes in those KU Relays back in the late 1970s got him interested in competing and he took the plunge the very next year.

Strader’s first competitive event was, in fact, the KU Relays marathon and while he noted it was overwhelming, he also clocked a strong time of three hours and 17 minutes and was hooked.

The strong running community in Holton is another influence that kept Strader involved in competition, he said. While many runners look up to Strader as a role model, he reciprocates the feeling by noting there are several strong runners in the Holton Scramblers running club

that continued to push him.

Part of the push came from some friendly competition and led Strader to set that goal of running marathons in all 50 states, which he came very close to doing though, somehow, some nearby states (like Iowa) were left unchecked on that list.

Even missing eight states, Strader has plenty of highlights and good memories to recount, including racing in the Boston and New York marathons, as well as one of the biggest challenges that came in nearby Colorado.

“Probably the toughest marathon was Pike’s Peak in Colorado, running up Pike’s Peak. That was a great challenge because of the altitude,” Strader said.

More than just the achievements, though, Strader has also gotten to share this interest with his family. He noted he used to compete with a brother-in-law in Kansas City while he’s also had the opportunity to run with his children, Scott Strader, Jennifer Paxton and Ryan Strader, as well as several of his grandchildren (like Taylor Stonerock, Sidney Strader, Connor Strader, Riley Strader, Mason Strader and Paige Paxton).

Now, Strader has the opportunity to watch many of them compete instead of competing himself and he said he enjoys that and seeing how the community in Holton is strengthening them as well.

“It is fantastic. They’re doing so well and it’s just great to see them. They’re so competitive and driven and work hard and we have really good coaching up here in cross country, track, football and all of our sports,” Strader said.

While the need for competition has ebbed away for Strader, who spends most of his time now volunteering around the community, gardening or at home with his wife Linda, there are others in his family and in the community who will carry the banner for what he represents.

“We have great opportunities here in Holton. The Scramblers; anyone, any age can run with them about any time once or twice a week. They’re a fun bunch of people to run with and they’re absolutely real competitive,” Strader said. “It’s just a great community to run in.”

Several Holton runners have followed in Strader’s footsteps and gone on to compete in the Boston marathon and other prestigious events, so his impact has clearly been felt.

By no means is Strader done running, either, he’s just retired from competing. He noted he still gets out three or four times a week (once in a while with the Scramblers), but he has to limit his distance to three or four miles at a time. Strader noted he will keep going, too, as long he continues to reap the benefits.

“It’s no guarantee that if you run long distance that you’re going to live longer, but it probably helps out quite a little,” Strader said.

Running will probably always be in Strader’s blood given all he’s accomplished since moving to Holton from Frankfort nearly 60 years ago, but with a long list of family and friends influenced by him, there are plenty of candidates to take up the competitive torch for him and be a role model for future generations.

Hickman makes NFL debut

Undrafted rookie free agent and Holton native Forrestal Hickman saw his first professional football game action with the NFL’s San Diego Chargers in a 17-7 preseason victory over the Dallas Cowboys last

Thursday.

Hickman, an offensive lineman with the number 73 jersey, got in during the waning minutes of the game and will look to carve out a spot on the roster in the three remaining

preseason games.

San Diego travels to Arizona for a game this Saturday, before hosting the defending NFC champions from Seattle on Saturday, Aug. 29 and then closing out the preseason at San Francisco on Thursday, Sept. 3.

The two away games will start at 9 p.m. and be available on Game Pass, the NFL’s premium viewing service (which offers a seven-day free trial to first-time users), while the Chargers’ date with the Seahawks will be broadcast nationally on CBS starting at 7 p.m. Tune in and you may catch a glimpse of the 6’6”, 320 lb. former Wildcat showcasing his skills on the NFL stage.



Royal Valley’s Grace Harvey (shown above, right) tries to slam the volleyball over the net while Holton alum Hannah Suarez (left) goes up for the block during summer league action at Holton Middle School.

Photo by Kelly Brecknitch



Korbin Fox (shown above) puts a ball into play into Pinto League baseball competition earlier this summer when his Holton National Bank team took on Holton Meat Processing.

Photo by Kelly Brecknitch

Be wary of certain lakes around Kansas

Two public lakes in Nemaha and Brown counties have been placed under a warning status due to the apparent presence of blue-green algae, the Kansas Department of Health and Environment reported in recent days.

KDHE samples publicly accessible bodies of water for cyanobacteria, commonly called blue-green algae, when the agency is alerted to a potential algae bloom in Kansas lakes. KDHE, in cooperation with the Kansas Department of Wildlife, Parks and Tourism (KDWP) and other lake managers where appropriate, responds by informing the public of harmful conditions.

Brown County State Fishing Lake and Nemaha State Fishing Lake are two of nine public lakes placed on KDHE’s most recent list of lakes under warning. The others are Chisholm Creek Park Lake in Sedgewick County, Crystal Lake in Anderson County, McPherson County State Fishing Lake in McPherson

County, Melvern River Pond (not Melvern Lake) in Osage County, Memorial Park Lake in Barton County, Milford Reservoir (zones A and C) in Dickinson and Geary counties and Plainville Township Lake in Rooks County.

Lakes under a warning are not closed. Marinas, lakeside businesses and park camping facilities are open for business. If swim beaches or lakes are closed, it will be specifically noted. Drinking water and showers at parks are safe and not affected by algae blooms.

Boating and fishing are safe on lakes under a warning, but contact with the water should be avoided. It is safe to eat fish caught during a harmful blue-green algae outbreak, as long as the fish is rinsed with clean water; consume only the fillet portion and discard all other parts. Hands should also be washed with clean water after handling fish taken from an affected lake.

Kansans should be aware that blooms are unpredictable. They can develop rapidly and may float

around the lake, requiring visitors to exercise their best judgment. If there is scum, a paint-like surface or the water is bright green, avoid contact and keep pets away. These are indications that a harmful bloom may be present.

KDHE and KDWP urge pet owners to be particularly mindful of the presence of blue-green algae. Pets that swim in or drink water affected by a harmful algal bloom or eat dried algae along the shore may become seriously ill or die.

A “Public Health Warning” indicates that high levels of toxic blue-green algae have been detected. Such a warning indicates that activities like boating and fishing may be safe; however, direct contact with water (i.e., wading, skiing and swimming) is strongly discouraged for people, pets and livestock.

KDHE will update these statements as conditions warrant. For

information on blue-green algae and reporting potential harmful algal blooms, visit www.kdheks.gov/algae-illness/index.htm.

Dove hunting opportunity

Young hunters looking to take advantage of a learning opportunity in the northeast Kansas area can sign-up for the Westar Energy Green Team’s annual youth dove hunt at the start of dove season over Labor Day weekend.

The annual hunt helps teach the basics of dove hunting, with plenty of birds flying at close range. The hunt will be held at Jeffrey Energy Center in St. Marys on Saturday, Sept. 5 and Sunday, Sept. 6 in the early morning or late afternoon.

Anyone age 16 or younger may participate in the hunt, but guidelines require they bring their own shotgun, be accompanied by a non-hunting adult and have a license and Harvest Information Program stamp (if age 16). Non-toxic shells will be provided.

With the spacious wheat and sunflower fields prepared to draw the doves, there should be plenty of action, organizers say. Hunters will be accepted on a first-come, first-served basis. Hunts will be scheduled as requests dictate and hunting groups can be formed. Guides will be provided for each group.

To register, call Barb Cornelius at (785) 575-8125 by Friday, Aug. 28.

Get The Holton Recorder Today!

Call 785-364-3141!

Welcome

It's Too Important!

Electronic mail is great, isn't it? The Holton Recorder receives many news stories and advertisements via email every day. It is our policy to send email replies to verify receipt of news and ad copy. If you send news or ads to us by email, you should expect to receive a reply from us. If you do not receive a prompt reply, call us at 785-364-3141 to make sure we received your information. It's too important to you, and to us!

The Holton Recorder

P.O. Box 311, 109 W. 4th
Holton, KS 66436 • (785) 364-3141
holtonrecorder@embarqmail.com

Monsanto’s ROUND UP

Diagnosed with a serious medical condition, including Non-Hodgkin’s Lymphoma, after exposure to Monsanto’s Round Up pesticide?

You may be entitled to compensation

Call McDivitt Law Firm

Toll Free: 888-212-1322

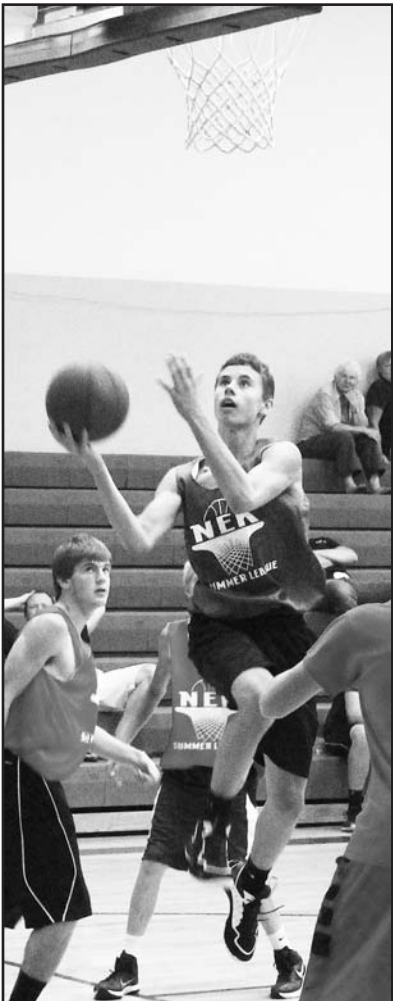
ADVERTISEMENT



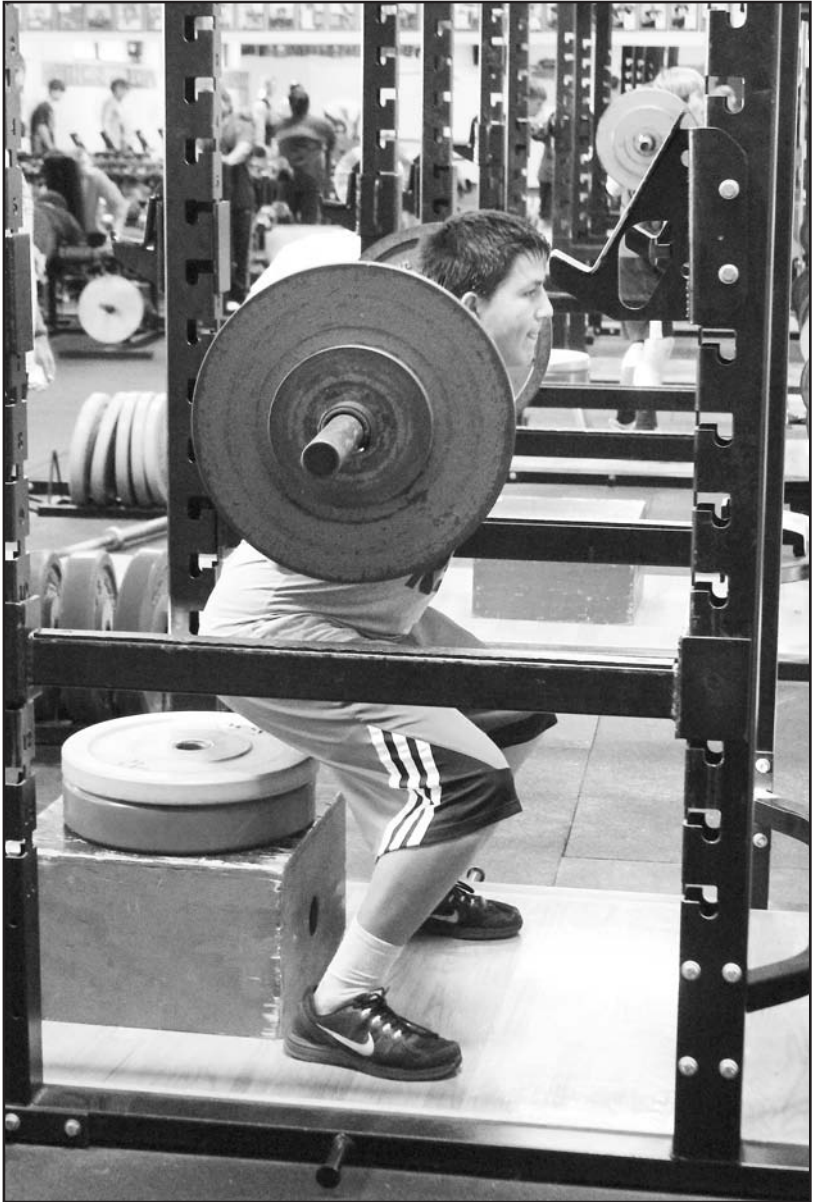
Garrett Holaday (shown above) tees off on hole number one at Holton Country Club during the annual member-guest tournament. Photo by Kelly Breckunitch



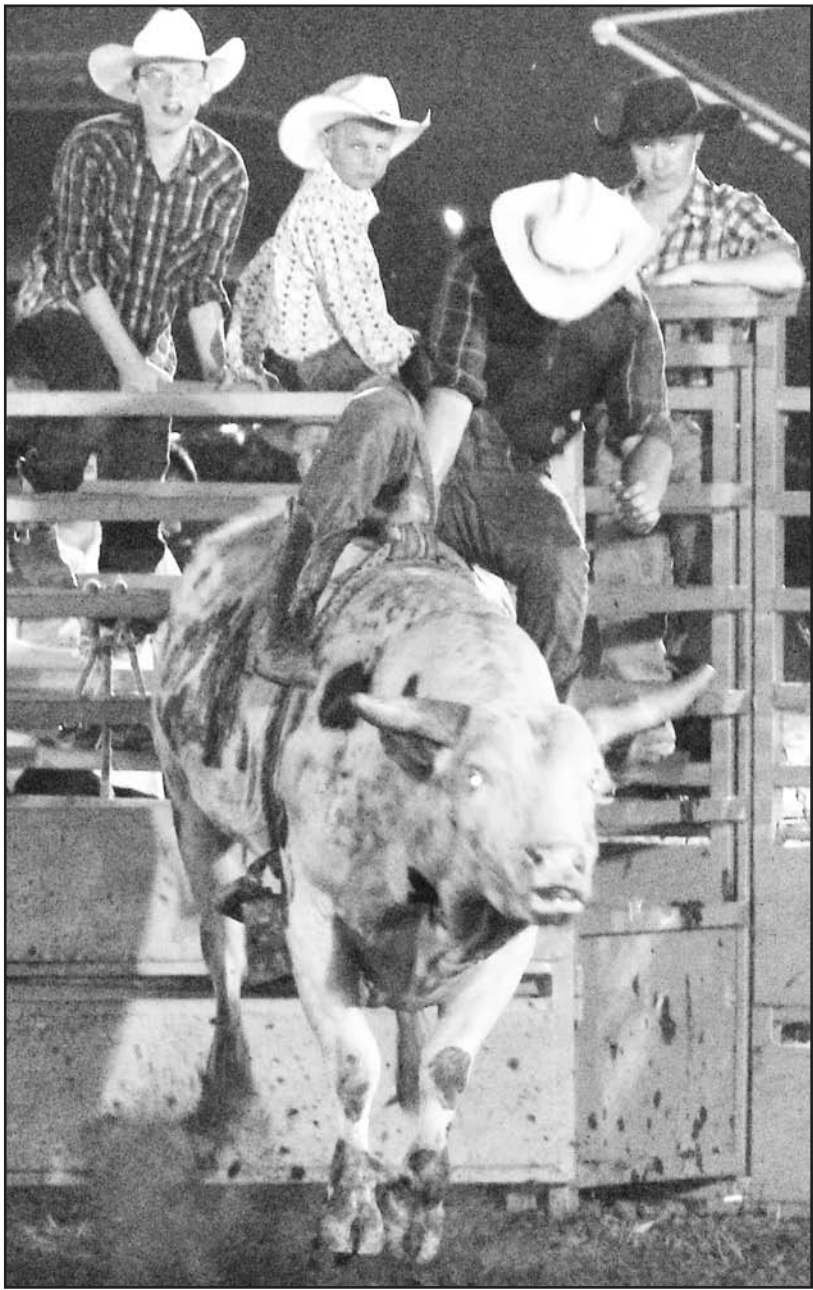
Holton's Jack Brown (shown in top photo, in front) tries to fight off a pin attempt by Kit Jackson during the "Showdown at Sundown," which wrapped up the Wildcats' wrestling camp earlier this summer. Before that, the Royal Valley Lady Panthers were in action on the basketball court for summer league competition in June. Bella Thompson (shown above, at left) competed for RVHS and is shown pulling up for a jumper in one such game against Atchison. Photos by Kelly Breckunitch



Cobra basketball player Wyatt Olberding (shown above, middle) goes up and under for an easy lay-up during summer league competition in Sabetha. Jackson Heights went on to win the league tournament at the end of the summer season. Area athletes stayed busy in the weight room as well, including the RVHS Panthers. One such athlete, RV's Brandon Rodewald (shown in above right photo), works on his squat during a weight room session. Photos by Kelly Breckunitch



The HHS gym was busy with volleyball this summer (as shown above), while the fifth annual Jackson County rodeo also drew a lot of competitors. Holton's Cody Simmons (shown at right) tries to hold on during the bull-riding competition. Photos by Kelly Breckunitch



Public Notice

(Published in The Holton Recorder, Holton, Kan., on Monday, Aug. 17, 2015.)

USD 336 PUBLIC NOTICE OF VOTE

2015-16 PROPERTY TAX RATES

2-YEAR PROPERTY TAX REVIEW

(Excluding General Fund, Bond and Interest, No-Fund Warrants, and Temporary Note)

Fund	2014-15		2015-16		Percent Increase Over Prior Year
	Amount	Levie Rate	Amount	Levie Rate	
1. Supplemental General	668,132	15.822	731,011	16.742	9.41%
2. Adult Education	0	0.000	0	0.000	0.00%
3. Capital Outlay	337,824	8.000	349,315	8.000	3.40%
4. Special Liability Expense	0	0.000	0	0.000	0.00%
5. School Retirement	0	0.000	0	0.000	0.00%
6. Extraordinary Growth	0	0.000	0	0.000	0.00%
7. Cost of Living	0	0.000	0	0.000	0.00%
8. Declining Enrollment	0	0.000	0	0.000	0.00%
9. Special Assessment	0	0.000	0	0.000	0.00%
10. TOTAL	1,005,956	23.822	1,080,326	24.742	7.39%

NOTE: Publication in the local newspaper is required if Line 10 is over 1.6 percent.

Required by KSA 79-2925b

BOARD OF EDUCATION VOTE

Approved 6 Disapproved 0

Deirdre Folk
Clerk of the Board

L65t1

Estate Sale - 2nd Release
LOG HOME KITS
AMERICAN LOG HOMES IS ASSISTING LIQUIDATION OF NEWLY RELEASED ESTATE & ACCOUNT SETTLEMENT ON HOUSES 3 Log Homes selling for **BALANCE OWED, FREE DELIVERY**

- Model # 203 Georgia \$49,500 — **BALANCE OWED \$22,900 ★**
- Model # 303 Little Rock \$38,525 — **BALANCE OWED \$15,900 ★**
- Model # 502 Santa Fe \$44,900 — **BALANCE OWED \$17,500 ★**

• NEW - HOMES HAVE NOT BEEN MANUFACTURED
• Make any design changes you desire!
• Comes with Complete Building Blueprints & Construction Manual
• Windows, Doors, and Roofing not included
• NO TIME LIMIT FOR DELIVERY

BBB A+ Rating
View at www.loghomedream.com - Click on House Plans
SERIOUS ONLY REPLY, Call 704-602-3035 ask for Accounting Dept.

Foundation cracks? Water seepage?

DRY BASEMENT®
FOUNDATION REPAIR

Restore your home's value.
Call us today!!

316-243-9342 • 888-485-6398 • www.DryBasementKansas.com

AG EQUIPMENT AUCTION
AUGUST 26 Bidding starts to close at 10 a.m. CDT

ALL ITEMS ARE SELLING WITHOUT RESERVE!

purple wave auction
combines, heads, tractors, applicators, sprayers, tub grinders, semi trucks and more. 10% buyer's premium applies | **866.608.9283**

Jackson County 2014 Delinquent Tax List

(First published in The Holton Recorder, Holton, Kan., on Monday, Aug. 10, 2015.)

SALE OF JACKSON COUNTY - NOT FINAL SALE. NOTICE IS HEREBY GIVEN THAT LINDA GERHARDT, TREASURER OF JACKSON COUNTY, KANSAS WILL SELL AT MY OFFICE IN THE CITY OF HOLTON ON THE FIRST TUESDAY IN SEPTEMBER, 2015 THE FOLLOWING LANDS AND TOWN LOTS SITUATED IN SAID COUNTY AND STATE, UNLESS SAID TAXES AND CHARGES ARE PAID BEFORE THE DATE OF SALE. SALE WILL BE MADE TO JACKSON COUNTY ONLY, NOT TO ANY INDIVIDUALS AS PROVIDED BY STATUTE OF KANSAS 79-2301. LISTED BELOW IS A CERTIFIED LIST OF DELINQUENT REAL ESTATE TAXES FOR TAX YEAR 2014.

CIRCLEVILLE	
BROWNING, ANNETA % COOK, WENDY Prop Addr: 303 GRANT ST 66416 CIRCLEVILLE (O.T.), E28 LOT 4 & W35 LOT 3 BLK 3 SECTION 21 TOWNSHIP 06 RANGE 14E	639.26
CAMPBELL, STEVEN R & LINDA S Prop Addr: 304 SEMINARY ST 66416 HILL'S SUBDIVISION, LOTS 17 & 18 & VAC MCKINLEY AV SECTION 21 TOWNSHIP 06 RANGE	169.73
ELLIS, AMBER D; HENRY, TORREY Prop Addr: 201 GRANT ST 66416 CIRCLEVILLE (O.T.), LOTS 2,3 & 4 BLK 8 SECTION 21 TOWNSHIP 06 RANGE 14E	300.96
OLSON, JUDY R Prop Addr: 401 GRANT ST 66416 CAIN'S ADDITION, LOT 1 BLK B SECTION 21 TOWNSHIP 06 RANGE 14E	125.10
TESSENDORF, MARY E Prop Addr: 200 SEMINARY ST 66416 S21, T06, R14E, ACRES 10.6, BEG 647N SW/C SE/4 SE/4 E264 S11 E95 S10 E81 N710	153.50
TESSENDORF, MARY E Prop Addr: 201 SEMINARY ST 66416 SEMINARY ADDITION, N25 LOT 9 & LOT 10 LESS BEG NW/C LOT 9 S25 E100 N120 W100	357.57
THORTON, TERRI Prop Addr: 307 LINCOLN ST 66416 CIRCLEVILLE (O.T.), LOT 8 BLK 8 SECTION 21 TOWNSHIP 06 RANGE 14E	257.96
THORTON, TERRI Prop Addr: BUTLER AVE 66416 CIRCLEVILLE (O.T.), BEG NE/C LOT 6 W38 S25 E38 N25 TO POB BLK 8 SECTION 21	4.65
DELIA	
COWAN, KELLY E Prop Addr: 418 DELIA AVE 66418 DAVID (1ST ADD.), S28, T09, R13E, LOTS 30 & 32 DELIA AVE SECTION 28 TOWNSHIP 09	15.37
HOLTHAUS, EDITH Prop Addr: 301 OAK ST 66418 S28, T09, R13E, LOTS 45 & 47 NORA AVE	567.90
JOHNSON, DE ELLA A & CYNTHIA LEE C/O PENDLETON, RYAN Prop Addr: 519 JACKSON AVE 66418 DAVID, LOTS 5,7,9 & 11 JACKSON AVE SECTION 28 TOWNSHIP 09 RANGE 13E	515.98
KELLER, FRED C Prop Addr: 519 WASHINGTON AVE 66418 DAVID, LOTS 1 THRU 9 WASHINGTON AVE (ODD) SECTION 28 TOWNSHIP 09 RANGE 13E	304.64
MCMILLIN, H JOE & VIRGINIA C Prop Addr: 504 DELIA AVE 66418 DAVID (1ST ADD.), LOTS 18,20,22 & 24 DELIA AVE SECTION 28 TOWNSHIP 09 RANGE	788.91
MELECHINSKY, GARY A & REBECCA ADAMS Prop Addr: 403 NORA AVE 66418 DAVID (1ST ADD.), LOTS 39,41 & 43 NORA AVE SECTION 28 TOWNSHIP 09 RANGE 13E	458.36
ROBB, JOSHUA & MOLLY Prop Addr: 417 WASHINGTON AVE 66418 DAVID, S28, T09, R13E, LOTS 39,41,43 & S21' LOT 37 WASHINGTON AVE (ODD) SECTION	182.62
WILSON, ROBERT H & HELEN J Prop Addr: 203 EAST ST 66418 DELIA (O.T.), LOTS 61,63,65 & 67 EAST ST SECTION 28 TOWNSHIP 09 RANGE 13E	277.11
DENISON	
CAPPLEMAN, EDWILL & TEENA J Prop Addr: 308 WESTERN AVE 66419 DENISON (O.T.), LOTS 86-108 WESTERN AVE (EVEN) SECTION 33 TOWNSHIP 07 RANGE 16E	228.66
CLARK, CARROL Prop Addr: 206 HIGHLAND AVE 66419 DENISON (O.T.), LOTS 72-78 HIGHLAND AVE (EVEN) SECTION 33 TOWNSHIP 07 RANGE 16E	709.19
COLLINS, ERIC L Prop Addr: FRONT ST 66419 DENISON (O.T.), E10 FT LOT 20 HIGHLAND AVE SECTION 33 TOWNSHIP 07 RANGE 16E	3.26
COLLINS, ERIC L Prop Addr: 101 CENTRAL AVE 66419 DENISON (O.T.), LOTS 21,23 & S24 FT LOT 25 CENTRAL AVE SECTION 33 TOWNSHIP 07	344.52
COLLINS, ERIC L Prop Addr: CENTRAL AVE 66419 DENISON (O.T.), N1 FT LOT 25 & LOTS 27 & 29 CENTRAL AVE SECTION 33 TOWNSHIP 07	13.89
COLLINS, ERIC L Prop Addr: CENTRAL AVE 66419 DENISON (O.T.), BEG NW/C LOT 18 CENTRAL AVE S57.9 SE149.4 TO E LINE LOT 10	28.92
ELLIS, AMBER D Prop Addr: 200 CENTRAL AVE 66419 DENISON (O.T.), W60 FT LOTS 50 & 52 CENTRAL AVE SECTION 33 TOWNSHIP 07 RANGE	285.96
ELLIS, AMBER D Prop Addr: 304 SECOND ST 66419 DENISON (O.T.), LOTS 50-56 WESTERN AVE (EVEN) SECTION 33 TOWNSHIP 07 RANGE 16E	262.69
GEORGE, CHARLES V & PENNY KAY Prop Addr: 507 CENTRAL AVE 66419 DENISON (O.T.), LOTS 151-169 CENTRAL AVE (ODD) ALONG WITH 1/2 ADJ VAC STREET	552.04
HARDS, GARY R & VIVA M Prop Addr: 506 CENTRAL AVE 66419 DENISON (O.T.), LOTS 160 THRU 168 EVEN CENTRAL AVE ALONG WITH 1/2 ADJ VAC	256.46
KAUTZ, LARRY % FOYE, DONNA Prop Addr: 202 HIGHLAND AVE 66419 DENISON (O.T.), LOTS 56,58 & 60 HIGHLAND AVE SECTION 33 TOWNSHIP 07	227.26
LAMASTUS, RAY & BARBARA K Prop Addr: 202 FORTS ST 66419 DENISON (O.T.), LOTS 110-120 HIGHLAND AVE (EVEN) SECTION 33 TOWNSHIP 07 RANGE	300.19
LOCKHART, KATHRYN S & MICHAEL W Prop Addr: 102 FOURTH ST 66419 DENISON (O.T.), LOTS 110,112 & 114 CENTRAL AVE SECTION 33 TOWNSHIP 07 RANGE	599.70
SWEANY, ROGER L Prop Addr: 102 K-16 HWY 66419 DENISON (O.T.), BEG 57.9S NW/C LOT 18 CENTRAL AVE S TO SW/C LOT 10 CENTRAL AVE	571.11
SWEANY, ROGER L Prop Addr: K-16 HWY 66419 S04, T08, R16E, ACRES 0.2, LOT 3 KC & NW RR ROW ADD	11.95
TWOMBLY, WILLIAM L Prop Addr: 406 HIGHLAND AVE 66419 DENISON (O.T.), LOTS 130-138 HIGHLAND AVE (EVEN) SECTION 33 TOWNSHIP 07 RANGE	874.59
VILLINES, RENEE M; JOHNSON, DARIN L Prop Addr: 303 CENTRAL AVE 66419 DENISON (O.T.), LOTS 85 THRU 97 (ODD) CENTRAL AVE SECTION 33 TOWNSHIP 07 RANG	1,189.53
HOLTON	
ACKERMAN, LOIS; FULKERSON, VIRGINIA, Prop Addr: 717 NEW JERSEY AVE 66436 HOLTON (O.T.), LOT 91 NEW JERSEY AVE SECTION 03 TOWNSHIP 07 RANGE 15E	640.99

APTURE C/O CPI Prop Addr: 818 WISCONSIN AVE 66436 HOLTON (O.T.), LOT 106 WISCONSIN AVE SECTION 03 TOWNSHIP 07 RANGE 15E	1,536.63
BEECHAM, HARRY BRADLEY % GRUNERT, ROBERT & PATRICIA Prop Addr: 932 KANSAS AVE 66436 UNIVERSITY ADD., LOTS 30,32 & S/2 LOT 34 BLK C KANSAS AVE SECTION 04 TOWNSHIP	463.17
BENANDER, MARY LOU % SIMMONS, WILLIAM & LISA Prop Addr: 719 NEW JERSEY AVE 66436 HOLTON (O.T.), LOT 93 NEW JERSEY AVE SECTION 03 TOWNSHIP 07 RANGE 15E	378.00
BICKFORD, KEVIN Prop Addr: 625 OHIO AVE 66436 HOLTON (O.T.), LOT 83 & N/2 LOT 81 OHIO AVE SECTION 03 TOWNSHIP 07 RANGE 15E	1,775.60
CHILDERS, JUDY L Prop Addr: 609 OHIO AVE 66436 HOLTON (O.T.), N/2 LOT 73 & S/2 LOT 75 OHIO AVE SECTION 03 TOWNSHIP 07 RANGE	1,023.16
CLARK, HOWARD DAVID Prop Addr: 426 NEW JERSEY AVE 66436 HOLTON (O.T.), LOT 56 NEW JERSEY AVE SECTION 03 TOWNSHIP 07 RANGE 15E	2,169.65
CONGER, TWILA I; TR C/O LEON CONGER Prop Addr: 704 MINNESOTA AVE 66436 DRAKE & FENN'S SUB. NO 1, LOTS 30,32 & W/2 LOT 28 MINNESOTA AVE & ADJ VAC ALLE	1,034.65
COOP, LAURA Prop Addr: 605 MONTANA AVE 66436 PARK ADDITION, LOT 39 & S/2 LOT 41 MONTANA AVE SECTION 04 TOWNSHIP 07 RANG	2,306.33
DEBUSK, ERNEST J Prop Addr: 301 LINCOLN AVE 66436 INTERSTATE ADD., LOTS 40,41 & S/2 LOT 39 BLK 10 LINCOLN AVE SECTION 09	1,059.36
DEVADER, DOUGLAS W; PUQUA, MARY E Prop Addr: 1001 NEW JERSEY AVE 66436 ELK GROVE ADD., LOTS 1 & 3 NEW JERSEY AVE SECTION 03 TOWNSHIP 07 RANGE 15E	484.84
EDWARDS, DENNIS JAMES Prop Addr: 415 WISCONSIN AVE 66436 HOLTON (O.T.), LOT 49 WISCONSIN AVE SECTION 03 TOWNSHIP 07 RANGE 15E	971.94
FORD, LORI LYNN Prop Addr: 902 KANSAS AVE 66436 UNIVERSITY ADD., LOTS 2 & 4 BLK C KANSAS AVE SECTION 04 TOWNSHIP 07 RANGE	457.77
HAINLINE, PATRICIA A Prop Addr: 317 NEBRASKA AVE 66436 S09, T07, R15E, BEG 60S SW INTERSEC FOURTH ST & NEBRASKA AVE W100 S60 E100	1,738.61
HALE, MARTIN A & DONNA Prop Addr: 712 KANSAS AVE 66436 HOLTON (O.T.), LOT 92 KANSAS AVE SECTION 04 TOWNSHIP 07 RANGE 15E	840.19
HALL, BEN D & MONESSA L Prop Addr: 407 IDAHO AVE 66436 PARK ADDITION, LOT 5 & S/2 LOT 7 IDAHO AVE SECTION 04 TOWNSHIP 07 RANGE 15E	2,377.97
HARRIS, ERIC W Prop Addr: 407 INDIANA AVE 66436 DRAKE & FENN'S SUB. NO 1, LOT 7 INDIANA AVE SECTION 03 TOWNSHIP 07 RANGE 15E	126.16
HELLER, JOSEPH WAYNE % HUSKEY, CASEY & DOTY, JAMEY Prop Addr: 709 PENNSYLVANIA AVE 66436 HOLTON (O.T.), LOT 89 PENNSYLVANIA AVE SECTION 03 TOWNSHIP 07 RANGE 15E	780.38
HELLER, JOSEPH WAYNE Prop Addr: 425 W SECOND ST 66436 WILSON'S ADDITION, LOTS 10,11 & 12 SECTION 09 TOWNSHIP 07 RANGE 15E	1,070.85
HOAGLAND, JAMES W & NORMA Prop Addr: 901 WASHINGTON AVE 66436 UNIVERSITY ADD., LOTS 1,3 & 5 BLK K & ADJ N/2 OF VAC NINTH ST SECTION 04	2,255.65
HOPKINS, EVERETT & PATTY Prop Addr: 523 W TENTH ST 66436 UNIVERSITY ADD., LOTS 36,38 & 40 & VAC ALLEY ADJ & W6 LOTS 37 & 39 SECTION 04	777.27
IRELAND, DENNIS L Prop Addr: KANSAS AVE 66436 UNIVERSITY ADD., LOTS 65 & 67 KANSAS AVE & BEG NW/C LOT 67 N TO ELK CRK E180	19.68
JEFFERSON, JEFFERY Prop Addr: 206 NEW JERSEY AVE 66436 HOLTON (O.T.), LOT 18 NEW JERSEY AVE SECTION 10 TOWNSHIP 07 RANGE 15E	132.80
JOHNSON, RHONDA J Prop Addr: 517 PENNSYLVANIA AVE 66436 HOLTON (O.T.), LOT 65 PENNSYLVANIA AVE SECTION 03 TOWNSHIP 07 RANGE 15E	501.68
KOGER, WILLIAM C & CAROLYN A % LORI FORD Prop Addr: 525 PENNSYLVANIA AVE 66436 HOLTON (O.T.), LOT 69 PENNSYLVANIA AVE SECTION 03 TOWNSHIP 07 RANGE 15E	446.08
LONGHOFER, JAMES G & BRANDEE L Prop Addr: 410 IOWA AVE 66436 HOLTON (O.T.), LOT 48 IOWA AVE SECTION 04 TOWNSHIP 07 RANGE 15E	1,037.75
MONTGOMERY, JOSEPH C Prop Addr: 306 KANSAS AVE 66436 LINSKOTT'S 1ST PLAT, LOT 30 & N/2 LOT 28 KANSAS AVE SECTION 09 TOWNSHIP 07	801.17
MONTGOMERY, JOSEPH C Prop Addr: 124 OHIO AVE 66436 HOLTON (O.T.), N40 LOT 12 & LOT 14 OHIO AVE SECTION 10 TOWNSHIP 07 RANGE 15E	665.29
MOORE, CLIFFORD C C/O MOORE, TEDDY Prop Addr: 935 IOWA AVE 66436 UNIVERSITY ADD., LOTS 35,37,39 & N/2 LOT 33 BLK C IOWA AVE SECTION 04	66.38
MORRIS, ELLIOTT D Prop Addr: 802 VERMONT AVE 66436 HOLTON (O.T.), LOT 100 VERMONT AVE SECTION 03 TOWNSHIP 07 RANGE 15E	516.01
OWENS, ROBERT T Prop Addr: 323 NEW JERSEY AVE 66436 HOLTON (O.T.), LOT 41 NEW JERSEY AVE SECTION 10 TOWNSHIP 07 RANGE 15E	1,565.16
POTTER, MELODY Prop Addr: 201 LINCOLN AVE 66436 INTERSTATE ADD., LOTS 35 & 36 BLK 9 LINCOLN AVE SECTION 09 TOWNSHIP 07 RANGE	700.17
RAWLINGS, KEVIN E & ANGLITA A Prop Addr: 201 NEW YORK AVE 66436 HOLTON (O.T.), LOT 15 NEW YORK AVE SECTION 10 TOWNSHIP 07 RANGE 15E	1,008.95
RILEY, WILLIAM J Prop Addr: OHIO AVE 66436 JONES ADDITION, LOT 15 OHIO AVE SECTION 03 TOWNSHIP 07 RANGE 15E	62.89
RILEY, WILLIAM L; RILEY, WILLIAM J Prop Addr: OHIO AVE 66436 JONES ADDITION, LOT 14 OHIO AVE SECTION 03 TOWNSHIP 07 RANGE 15E	56.08
SCHEID INC Prop Addr: ROGERS DR 66436 HOLTON INDUSTRIAL PARK, LOT 8 & 9 LESS E100 FT LOT 8 SECTION 33 TOWNSHIP 06	180.88
SCHEID, RUSSELL; SPIKER, TERESA M Prop Addr: FRONTAGE RD 66436 HOLTON INDUSTRIAL PARK, E100 FT LOT 8 SECTION 33 TOWNSHIP 06 RANGE 15E	141.55
SCHEID, RUSSELL; SPIKER, TERESA M Prop Addr: FRONTAGE RD 66436 HOLTON INDUSTRIAL PARK, BEG NE/C SW/4 W217.8 TO POB W70 S300 E70 N300 TO POB	136.68
SLATTERY, HELEN M Prop Addr: 1202 W FIFTH ST 66436 PARK ADDITION, E/2 LOTS 21,23 & 25 MONTANA AVE SECTION 04 TOWNSHIP 07 RANG	2,060.76

SNYDER, HARPER; SNYDER TATUM P Prop Addr: 915 PENNSYLVANIA AVE 66436 S03, T07, R15E, BEG 230N NE/C LOT 111 PENN AVE N70 W187 S70 E187 TO POB	1,533.80
SNYDER, SHARON E Prop Addr: 652 W FOURTH ST 66436 S04, T07, R15E, BEG 240E NE INTERSEC FOURTH ST & COLORADO AVE E83.4 E29.1	2,453.88
STEVENS, TERRY L & MARIAN F Prop Addr: 401 IDAHO AVE 66436 PARK ADDITION, LOTS 1 & 3 IDAHO AVE SECTION 04 TOWNSHIP 07 RANGE 15E	1,263.39
TECCHIO, CAROL A & PARIST, MELODY Prop Addr: 425 WISCONSIN AVE 66436 HOLTON (O.T.), LOTS 53 & 55 WISCONSIN AVE SECTION 03 TOWNSHIP 07 RANGE 15E	1,949.06
WINGENDER, PHILLIP J SR; TR Prop Addr: 517 VERMONT AVE 66436 HOLTON (O.T.), LOT 65 VERMONT AVE SECTION 03 TOWNSHIP 07 RANGE 15E	1,186.88
WINGENDER, PHILLIP J SR; TR Prop Addr: 431 HILLCREST DR 66436 ROSSER ADDITION, W62 LOT 1 BLK 3 & BEG SW/C LOT 1 N100 W18 S100 E18 TO POB	1,531.87
WOLF, CHRISTINA & MARTIN, DARRIN Prop Addr: 325 VERMONT AVE 66436 HOLTON (O.T.), LOT 41 VERMONT AVE SECTION 10 TOWNSHIP 07 RANGE 15E	1,216.09
WOLTJE, JASON D & MELANIE R Prop Addr: 417 COLORADO AVE 66436 S04, T07, R15E, BEG 360S SW INTERSEC COLORADO AVE & FIFTH ST W160 S60 E60 S5	1,238.28
ZIBELL, JOHN D & SARAH E Prop Addr: 803 WISCONSIN AVE 66436 HOLTON (O.T.), LOTS 99 & 101 & 10 FT VAC ADJ ALLEY WISCONSIN AVE SECTION 03	2,866.02
ZIBELL, JOHN D & SARAH E Prop Addr: 1003 KANSAS AVE 66436 UNIVERSITY ADD., LOTS 41,43,45 & 47 BLK F KANSAS AVE SECTION 04 TOWNSHIP 07	562.74
ZIBELL, JOHN SR Prop Addr: 410 NEW JERSEY AVE 66436 HOLTON (O.T.), LOT 48 NEW JERSEY AVE SECTION 03 TOWNSHIP 07 RANGE 15E	56.08
ZIMMERMAN, MARCIA K Prop Addr: 100 VERMONT AVE 66436 HOLTON (O.T.), LOT 2 & S/2 LOT 4 VERMONT AVE & VAC ALLEY SECTION 10	2,527.47
HOYT	
ANNO, RICKY L & KIMBERLY K Prop Addr: 200 E FOURTH ST 66440 S23, T09, R15E, BEG 50E SE/C LOT 36 CENTRAL AVE N160 E158 S160 W160 TO POB	778.17
BOYER, DEAN A & KARLA J Prop Addr: 301 HIGHLAND AVE 66440 HOYT (O.T.), LOT 29 & S16 LOT 31 HIGHLAND AVE SECTION 23 TOWNSHIP 09	473.71
BROOKSHIRE, MICHAEL L Prop Addr: 506 K-214 HWY 66440 LONG'S 2ND ADD., N32.142 LOT 23 & S62.144 LOT 24 SECTION 23 TOWNSHIP 09	808.39
COCHRAN, SHARRYL Prop Addr: 707 ANNETTA AVE 66440 S23, T09, R15E, BEG 840N & 60W NW/C LOT 47 FIFTH AVE N190 W233.75 S191.27	307.48
DEBUSK, ERNEST J Prop Addr: FIFTH ST 66440 LONG'S 2ND ADD., LOTS 1 & 2 SECTION 23 TOWNSHIP 09 RANGE 15E	30.54
EVANS, CARA L Prop Addr: 104 HIGHLAND AVE 66440 HOYT (O.T.), LOTS 6 & 8 HIGHLAND AVE SECTION 23 TOWNSHIP 09 RANGE 15E	1,117.54
EVANS, CARA L Prop Addr: CENTRAL AVE 66440 HOYT (O.T.), LOTS 3 & 4 CENTRAL AVE & ADJOIN VAC CENTRAL AVE & 1/2 ABAN RR	208.96
KNEISLER, BELINDA Prop Addr: 105 E EIGHTH ST 66440 S23, T09, R15E, ACRES 1.0, LOTS 76 & 77 CENTRAL AVE & BEG NE/C LOT 77 E50	757.07
MATYA, AMANDA M Prop Addr: 303 E FIFTH ST 66440 HOYT (O.T.), LOTS 1 THRU 11 (ODD) FIFTH AVE SECTION 23 TOWNSHIP 09 RANGE 15E	531.46
SCHNACKER, TRACI R Prop Addr: 113 W FOURTH ST 66440 MCKEAGE'S 2ND ADD., LOT 33 SECTION 23 TOWNSHIP 09 RANGE 15E	2,147.34
SECRETARY OF HOUSING & URBAN DEVELOPMENT Prop Addr: 206 HIGHLAND AVE 66440 HOYT (O.T.), LOTS 22 & 24 HIGHLAND AVE SECTION 23 TOWNSHIP 09 RANGE 15E	892.90
STEVENS, JANICE M; STEVENS, JOHN M; Prop Addr: 402 ANNETTA AVE 66440 HOYT (O.T.), LOTS 76,77,78 & S12 LOT 75 ANNETTA AVE SECTION 23 TOWNSHIP 09 RANGE	262.00
STEVENS, JANICE M & JOHN M Prop Addr: FOURTH ST 66440 HOYT (O.T.), LOTS 71,72,73,74 & S13 LOT 75 ANNETTA AVE SECTION 23 TOWNSHIP 09	207.22
MAYETTA	
C N CATTLE CO Prop Addr: N SECOND ST 66509 R. WHALEN'S ADD., W76 FT OF LOT 1 & S/2 LOT 3 SECOND ST SECTION 22 TOWNSHIP 08	28.30
COCHRAN, MICHAEL W Prop Addr: 307 E JONES ST 66509 LUNGER'S ADDITION, LOTS 46 & 48 JONES ST SECTION 22 TOWNSHIP 08 RANGE 15E	827.26
DEBUSK, ERNEST Prop Addr: 201 S SECOND ST 66509 MAYETTA (O.T.), LOT 4 JAMES ST & VAC ST ADJ TO SW LINE LOT 4 SECTION 22 TOWNSHIP	220.42
DEBUSK, ERNEST J Prop Addr: 107 E JONES ST 66509 MAYETTA (O.T.), LOT 18 JONES ST SECTION 22 TOWNSHIP 08 RANGE 15E	222.58
DEBUSK, ERNEST J Prop Addr: 208 E MAIN ST 66509 LUNGER'S ADDITION, LOTS 41 & 43 MAIN ST SECTION 22 TOWNSHIP 08 RANGE 15E	556.35
DEBUSK, ERNEST J Prop Addr: 325 E MAIN ST 66509 S22, T08, R15E, LOTS 82 THRU 90 (EVEN) MAIN ST	535.78
DEBUSK, ERNIE J Prop Addr: 210 E CLARK ST 66509 SHUMWAY'S ADD., LOTS 9 & 11 CLARK ST SECTION 22 TOWNSHIP 08 RANGE 15E	959.42
HITTLE, RANDY LYLE Prop Addr: 201 E JONES ST 66509 LUNGER'S ADDITION, LOTS 26 & 28 JONES ST SECTION 22 TOWNSHIP 08 RANGE 15E	631.44
KUONE, CLARENCE E Prop Addr: 207 N FIRST ST 66509 R. WHALEN'S ADD., LOTS 3 & 5 FIRST ST SECTION 22 TOWNSHIP 08 RANGE 15E	372.58
MILLER, WILLIAM B & WENDY Prop Addr: 221 E CLARK ST 66509 S22, T08, R15E, BEG 398N S SE/C NE/4 W145.4 S87 E145.4 N87 TO POB LESS RD ROW	339.36
MILLER, WILLIAM BATTAILLE & WENDY JO Prop Addr: 217 E CLARK ST 66509 S22, T08, R15E, BEG 398N & 145.3W SE/C NE/4 W145.3 S174 E145.3 N174 TO POB	356.74
NELSON, CARL F JR % NELSON, CAROL Prop Addr: 124 E MAIN ST 66509 MAYETTA (O.T.), LOT 29 & W.5 LOT 31 MAIN ST SECTION 22 TOWNSHIP 08 RANGE 15	743.25
NELSON, CARL F JR; TR Prop Addr: 128 E MAIN ST 66509 MAYETTA (O.T.), E29.5 LOT 31 MAIN ST SECTION 22 TOWNSHIP 08 RANGE 15E	372.50

(continued to page 9)

Jackson County 2014 Delinquent Tax List

(Mayetta - continued from page 8)

PETERS, SCOTT E & MOLLY J Prop Addr: 201 S FOURTH ST 66509 LUNGER'S 2ND ADD. , LOTS 1 & 2 SECTION 22 TOWNSHIP 08 RANGE 15E		626.98	WILLIAMS, TODD E; WILLIAMS, DALE C Prop Addr: 108 WHITING ST 66552 WHITING (O.T.) , LOTS 8 & 9 BLK 26 SECTION 27 TOWNSHIP 05 RANGE 16E		128.26	GRAY, STEVEN MELVILLE Prop Addr: 17399 126TH RD 66440 S16 , T09 , R16E , ACRES 5.4 , BEG 1980W NE/C NE/4 E705 S410 NW710 N240 TO POB 1,024.09 GREENWOOD, DELIA A Prop Addr: 14821 US-75 HWY 66509 S34 , T08 , R15E , ACRES 5.7 , BEG SE/C NE/4 N659.79 W38.9 N276 TO POB W743.57 753.93 GUDENKAUF, AMY & JARED; MEACHAM, DENNIS Prop Addr: X RD 66512 S26, T09, R16E, ACRES 10.9, S10.33 AC OF N/2 W/2 SW/4 LYING EAST OF PUBLIC RD 33.77 HILL, LOREN G Prop Addr: 13314 134TH RD 66440 S03 , T09 , R15E , ACRES 4.8 , BEG 1996W SE/C SE/4 N521.775 E417.42 S521.775 477.79 HUMES, DAVID E & CAROL J Prop Addr: 12224 Q RD 66440 S15 , T09 , R15E, ACRES 7.3 , BEG 2298.92S NW/C NW/4 E1120.6 S301.28 562.84 JACKSON COUNTY FARMS LLC C/O MIDWEST ESCROW FINANCIAL Prop Addr: 17455 142ND RD 66440 S04 , T09 , R16E , ACRES 9.6 , BEG 659.21W NE/C NE/4 S660.9 W659.39 N660.89 27.42 JACKSON COUNTY FARMS LLC % HOLBROOK, JAY Prop Addr: 13865 W RD 66440 S04, T09, R16E, ACRES 28.4 , BEG,SE/C OF NE/Q N958 W1330 S944 E1336 TO POB 354.84 KANSAS LAND ASSOCIATION C/O MIDWEST ESCROW & FINANCIAL Prop Addr: 118TH RD 66440 S20 , T09 , R15E , ACRES 11.4 , BEG 240W & 14.4SW NE/C NE/4 S ON C/L CRK TO E 103.34 MARKLEY, RICHARD S Prop Addr: 12575 S RD 66440 S14 , T09 , R15E , ACRES 2.5 , BEG 100S NE/C NE/4 W396 S330 E396 N330 TO POB 1,560.30 MASSEY, TONI L Prop Addr: 10237 T4 RD 66440 S31 , T09 , R16E, ACRES 31.9 , BEG 725W NE/C NW/4 W825 S660 W166 S660 E1363 N37 1,529.02 MCCLURG, MARJORIE A, JOHN MICHAEL, Prop Addr: 10185 Y RD 66512 S35 , T09 , R16E , ACRES 36.3 , NE/4 NE/4 LESS BEG S332 NE/C NW/4 S200 W660 220.03 MCCOLLUM, MACKS W & ALICIA Prop Addr: 16670 98TH RD 66440 S32 , T09 , R16E , ACRES 19.9 , BEG 1014.84W SE/C NE/4 W338.28 N263.47 W248 1,483.14 MULLINIX, WALTER F SR & INA MAE; Prop Addr: 9639 T RD 66440 S36 , T09 , R15E , ACRES 19.7 , S/2 S/2 N/2 SE/4 LESS RD ROW 883.24 NDIRA, INC Prop Addr: 11820 118TH RD 66509 S20 , T09 , R15E , ACRES 2.8 , BEG 240W NE/C NE/4 SW290 SW265 NW180 NW241 TO N 221.24 NELSON, CARL F JR; TR Prop Addr: 14351 S RD 66509 S35 , T08 , R15E , ACRES 78.3 , E/2 SE/4 LESS BEG SW/C E/2 SE/4 E108 N300 W108 688.79 NELSON, CARL F JR; TR Prop Addr: S RD 66509 S36 , T08 , R15E, ACRES 78.2 , S/2 SW/4 LESS RD ROW 96.10 NEUNER, BENNY J Prop Addr: 11014 T RD 66440 S19 , T09 , R16E , ACRES 3.4 , BEG SW/C SW/4 N325 E536 S325 W536 TO POB LESS RD 835.91 PAGE, ELBERT H & DOROTHY L % HOOD, VIRGINIA Prop Addr: 10699 U4 RD 66440 S29 , T09 , R16E , ACRES 14.4 , S15.9 AC OF N40.8 AC OF S50 AC E/2 NW/4 LESS RD 511.23 POORT, MARK A Prop Addr: 17435 126TH RD 66440 S16 , T09 , R16E , ACRES 4.7 , BEG 45E NW/C NE/4 NE/4 E219 SE514 S120 W440 N60 555.95 POORT, RENE P % TEETZEL, SEAN Prop Addr: 17625 126TH RD 66440 S15 , T09 , R16E , ACRES 38.7 , W/2 W/2 757.71 REECE, PHYLLIS KAY Prop Addr: 14655 U RD 66509 S31 , T08 , R16E , ACRES 8.5 , BEG SE/C NE/4 W660 NE478.46 E45 NE249.99 SE456.4 586.93 RIBELIN, BRYAN N Prop Addr: 13855 142ND RD 66509 S02 , T09 , R15E , ACRES 66.3 , E/2 NW/4 LESS RD ROW & LESS BEG NE/C E/2 NW/4 1,539.29 ROGERS, JOYCE & JOHN; SACKRIDER, ROLAND Prop Addr: 9989 S RD 66440 S35 , T09 , R15E , ACRES 2.6 , BEG 1240N SE/C SE/4 W400 S250 W234.99 N343 E634.99 711.53 ROLIN, STEVEN E & NANCY J Prop Addr: 102ND RD 66512 S34, T09, R16E, ACRES 43.8, NW/C OF NE/Q E706.5 S2632. W706.50 N2631.16 LESS 53.20 SABATINI, CYNTHIA L Prop Addr: S RD 66440 S12 , T09 , R15E , ACRES 4.6 , N/2 NW/4 NW/4 NW/4 LESS RD ROW 10.30 SCHROEDER, LOYD D Prop Addr: 11646 US-75 HWY 66440 S23 , T09 , R15E , ACRES 5.6 , BEG 1313.11S & 308.5E NW/C NW/4 N114.13 2,055.75 SHAW, ROBERT JOHN Prop Addr: 11090 P4 RD 66440 NORTH TOPEKA BABY FARMS, ACRES 5.9 , FARM 10D LESS RD ROW SECTION 21 TOWNSHIP 505.10 SIZER, SCOTT W & BRENNIA Prop Addr: 13720 134TH RD 66440 S02 , T09 , R15E , ACRES 4.8 , BEG SE/C W/2 SW/4 W417 N212.81 NE438.61 E235.06 1,635.97 STREETTER, BETTY Prop Addr: 15601 142ND RD 66509 S06 , T09 , R16E , ACRES 4.7 , BEG NW/C NE/4 E485 S449.07 W485 N449.07 TO POB 199.05 TEETZEL, EARL FLOYD & JANE A Prop Addr: 10927 US-75 HWY 66440 S27 , T09 , R15E , ACRES 3.2 , BEG 490S & 81.7W NE/C NE/4 W351.3 N402.5 E311.8 1,017.54 THOMASSON, MARY; BROWN, JON E C Prop Addr: 9915 T4 RD 66440 S31 , T09 , R16E , ACRES 4.8 , BEG 432N SE/C NW/4 N408 W534 S408 E534 TO POB 1,275.50 TUCK, LAWRENCE EUGENE Prop Addr: 17750 134TH RD 66440 S03 , T09 , R16E , ACRES 156.6 , SW/4 LESS RD ROW 324.45 WEIXELMAN, STEPHEN P Prop Addr: 18075 98TH RD 66440 S34 , T09 , R16E , ACRES 3.1 , BEG 882.74N SW/C SE/4 E494.79 S270 W494.8 230.35 WHEELER, GARRY LEE & JOAN ELAINE Prop Addr: 16257 105TH LN 66440 S29 , T09 , R16E , ACRES 10.1 , BEG NW/C N23 AC OF S75 AC E/2 SW/4 S759.9 E570 1,146.85				
NETAWAKA BELL, ALVIN JR & SHIRLEY A % WILLITS, RICHARD & DENISE Prop Addr: 421 WHITE WAY ST 66516 NETAWAKA (O.T.) , LOTS 6 & 7 BLK 3 SECTION 22 TOWNSHIP 05 RANGE 15E 465.94 D&S HOMES LLP Prop Addr: 518 PARK ROW ST 66516 NETAWAKA (O.T.) , W85 LOTS 1 & 2 BLK 6 SECTION 22 TOWNSHIP 05 RANGE 15E 863.51 EDWARDS, JEREMY L Prop Addr: 415 CHURCH ST 66516 RAILROAD ADD.(NETAWAKA) , LOTS 4,5 & N/2 LOT 3 BLK 19 SECTION 22 TOWNSHIP 05 534.08 EICHELBERGER, PATTY Prop Addr: 516 SUPERIOR ST 66516 RAILROAD ADD.(NETAWAKA) , S105 LOTS 1,2 & 3 BLK 8 SECTION 22 TOWNSHIP 05 RANGE 639.88 HOWLAND, JAMES E Prop Addr: 414 COMMERCIAL ST 66516 NETAWAKA (O.T.) , E26 LOT 16 & W20 LOT 17 BLK 7 SECTION 22 TOWNSHIP 05 RANGE 95.88 HOWLAND, JAMES E & CAROL J Prop Addr: 405 KANSAS ST 66516 NETAWAKA (O.T.) , LOTS 11,12,13 BLK 4 SECTION 22 TOWNSHIP 05 RANGE 15E 750.15 KOLOFF, SALLEY ALICE % EDWARDS, JONATHAN Prop Addr: 426 CHURCH ST 66516 NETAWAKA (O.T.) , E32 LOT 13 & LOTS 14 & 15 BLK2 SECTION 22 TOWNSHIP 05 RANGE 15E 476.32 MULLINS, JOSEPH WAYNE Prop Addr: 434 COMMERCIAL ST 66516 NETAWAKA (O.T.) , LOTS 11 & 12 BLK 7 SECTION 22 TOWNSHIP 05 RANGE 15E 265.12 SEC OF VETERANS AFFAIRS Prop Addr: 302 MAIN ST 66516 RAILROAD ADD.(NETAWAKA) , LOTS 9 & 10 BLK 15 SECTION 22 TOWNSHIP 05 RANGE 15E 96.86 SMITH, CHARLES & ANGELA Prop Addr: 430 MAIN ST 66516 RAILROAD ADD.(NETAWAKA) , LOT 6 & W66 LOT 7 BLK 14 SECTION 22 TOWNSHIP 05 279.52							ADRIAN QUIETT, JANNETTE R Prop Addr: E4 RD 66418 S27, T08, R13E, ACRES 19.68, S/2 SE/4 NW/ 52.09 BANNER EDWARDS, DENNIS J Prop Addr: M RD 66436 S01 , T07 , R14E , ACRES 4.8 , BEG SW/C SW/4 N1597.16 TO POB N344 E633 S344 W633 182.01 ELLIOTT, FRANK H & MARVEL C/O ELLIOTT, STEVEN Prop Addr: 198TH RD 66509 S34 , T07 , R14E , ACRES 9.8 , E/2 E/2 NE/4 NW/4 LESS RD ROW 22.71 MOORE, CLIFFORD C C/O MOORE, TEDDY Prop Addr: 222ND RD 66436 S15 , T07 , R14E , ACRES 10.7 , BEG 259W NE/C NW/4 NE/4 W 1065.5 S531.6 E974 NE550 26.12 CEDAR BRILL, LARRY E Prop Addr: 17314 158TH RD 66440 S21, T08, R16E, ACRES 20.3, W/2 E/2 W/2 SE/4 LESS RD ROW 263.85 C N CATTLE CO Prop Addr: 182ND RD 66509 S02, T08, R15E, ACRES 3.84, BEG W 942.29 OF SE/C N468.05 W360.40 S468.05 E360.40 8.43 DEVADER, MARTIN; CARLAT, KENNETH L Prop Addr: 12814 178TH RD 66509 S10 , T08 , R15E , ACRES 4.3 , SW/4 LYING E OF US75 HWY N OF COUNTY RD & W 1,389.16 DICK, CLINTON E Prop Addr: 17115 U RD 66509 S18 , T08 , R16E , ACRES 15.2 , BEG SE/C NE/4 N1090.55 NW453.37 SW502.06 S700 677.08 FIRST FINANCIAL TRUST LLC % LIEURANCE, STEPHEN Prop Addr: 16938 R RD 66509 S14 , T08 , R15E , ACRES 10.0 , BEG 656.82S NW/C SW/4 E1326.66 S328.33 114.77 FIRST FINANCIAL TRUST LLC C/O MIDWEST ESCROW & FINANCIAL Prop Addr: R RD 66509 S14 , T08 , R15E, ACRES 9.1 , BEG 985.15S NW/C SW/4 E1326.89 S328.27 19.96 FIRST FINANCIAL TRUST LLC C/O MIDWEST ESCROW & FINANCIAL Prop Addr: 13730 166TH RD 66509 S14 , T08 , R15E , ACRES 9.7 , BEG 997E SW/C SW/4 N1318 E330 S1319 W330 TO POB 32.73 JACKSON COUNTY FARMS LLC C/O MIDWEST ESCROW FINANCIAL Prop Addr: 16765 R4 RD 66509 S14 , T08 , R15E , ACRES 11.6 , BEG 545.5N SE/C SW/4 W928.01 N544.81 E927.61 983.33 KLOBNAK, RONALD J Prop Addr: 14275 166TH RD 66509 S23 , T08 , R15E , ACRES 8.9 , BEG 989.86W NE/C NE/4 S876.62 E493.03 2,098.71 KLOBNAK, RONALD J Prop Addr: 166TH RD 66509 S23 , T08 , R15E , ACRES 10.6 , BEG 989.86W NE/C NE/4 S1316.07 W330.88 26.32 KLOBNAK, RONALD J Prop Addr: S RD 66509 S23 , T08 , R15E , ACRES 9.1 , BEG NE/C NE/4 W497.94 S87 5.41 E497.94 N874.19 TO 23.53 MANSON, TIMOTHY L; CARLISLE, DANNA V Prop Addr: 15288 154TH RD 66509 S30 , T08 , R16E , ACRES 6.0 , BEG 1320S NW/C NW/4 S445.5 E660 N445.5 W660 TO PO 1,187.29 MIDWEST ESCROW & FINANCIAL SERVICES Prop Addr: R RD 66509 S14 , T08 , R15E , ACRES 10.0 , BEG NW/C SW/4 E1326.2 S328.44 W1326.43 N328.44 TO 23.53 NELSON, CAROL J Prop Addr: 182ND RD 66509 S03 , T08 , R15E , ACRES 78.8 , E74.25 AC SW/4 LESS RD ROW 93.54 NELSON, CAROL J Prop Addr: ROCK ISLAND RD 66509 ROCK ISLAND PLACE, S26, T08, R15E, ACRES 0.7, N/2 LOT 7 SECTION 26 TOWNSHIP 08 26.49 NELSON, CAROL J Prop Addr: ROCK ISLAND RD 66509 ROCK ISLAND PLACE, S26, T08, R15E, ACRES 0.06, N/2 LOT 7 SECTION 26 TOWNSHIP 08 1.61 NORRIS, CHARLES J & KATHLEEN % HENRY, JOHN & MERCEDES STUMP III, JENNI Prop Addr: 13040 162ND RD 66509 S22 , T08 , R15E , ACRES 6.8 , BEG 1072.75W SE/C NW/4 N1007.5 E334.54 169.20 PETERS, JEFFREY C & CONNIE SUE Prop Addr: 16844 158TH RD 66440 S21 , T08 , R16E , ACRES 2.6 , BEG AT COUNTY RD INTERSEC 435N SW/C N395 E335 417.01 POTTS, RICHARD WILL & ESTHER MARIE Prop Addr: R4 RD 66509 S11 , T08 , R15E , ACRES 8.6 , BEG NW/C NE/4 S662.08 TO POB E1343.8 S282.83 23.49 PURDY, THEODORE J II & TINA K Prop Addr: 16295 Q6 RD 66509 S22 , T08 , R15E , ACRES 2.8 , BEG 566.2N & 20W SE/C W/2 NE/4 N150 W820.35 830.14 ROEDIGER, LESLIE W Prop Addr: 15823 R RD 66509 S22 , T08 , R15E , BEG 280W & 50N SE/C SE/4 N480 SE550 SW47.1 W208.4 TO POB 286.61 SCOFIELD, DAVID L & CONNIE L Prop Addr: 13543 190TH RD 66509 S03 , T08 , R15E , ACRES 16.7 , BEG NE/C W530 S1348.7 E542 S1354.95 TO POB LESS 1,305.85 SMITH, STEVEN Prop Addr: 16455 166TH RD 66509 S20, T08, R16E, ACRES 6.88, BEG 2121.06W NE/C NE/4 S881.24 W349.02 N881.21 1,410.16 SMITH, WALTER R & JULIE A Prop Addr: 16325 R RD 66509 S22 , T08 , R15E , BEG 802N SE/C NE/4 N208.7 W208.7 S208.7 E208.7 TO POB LESS 1,491.54 STOVALL, SHANNON Prop Addr: 17975 W RD 66509 S09 , T08 , R16E , ACRES 7.5 , BEG NE/C SE/4 NE/4 S264 W 1320 N264 E1320 TO POB 182.81 THOMPSON, ADRIENNE & WILLIAM Prop Addr: 16360 Q6 RD 66509 S22 , T08 , R15E , ACRES 1.0 , BEG 1022N & 20E SW/C SE/4 NE/4 E265.21 N164 201.89			
DOUGLAS BAILEY, JAMES M & TINA M Prop Addr: 15112 142ND RD 66509 S36 , T08 , R15E , ACRES 20.0 , BEG SE/C SE/4 N439.4 W683 N494.6 W644.5 S939.55 3,018.97 CUMMINGS SR, MARVIN H Prop Addr: 13027 134TH RD 66440 S10 , T09 , R15E, ACRES 3.41, BEG NE/C OF NW/4 W647 TO POB S25798 W637.62 N258.15 1,411.68 DEKAT, TIMOTHY J & GAIL Prop Addr: 12568 110TH RD 66440 NORTH TOPEKA BABY FARMS, ACRES 4.8, FARM 14D LESS RD ROW SECTION 21 TOWNSHIP 812.43 FUQUA, GEORGE P Prop Addr: 14015 142ND RD 66509 S02 , T09 , R15E , ACRES 6.2 , BEG 960.69 S OF NW COR N61/4 TH S721.45 2,114.79 GORDON, DAVID J & CORNELIUS J Prop Addr: 9780 T4 RD 66440 S31 , T09 , R16E , ACRES 2.9 , BEG 115.94S NW/C SE/4 E512.18 S298.44 238.76										
FRANKLIN BICKFORD, MICHAEL F & MILLIE C Prop Addr: 22250 P RD 66436 S09 , T07 , R15E , ACRES 2.8 , BEG SW/C SW/4 N360 E348.7 S171.73 E27.33 S188.4 1,387.61 LADUSCH, LLOYD G Prop Addr: 21469 S4 RD 66436 S13 , T07 , R15E , ACRES 0.8 , BEG 400N SE/C SW/4 W200 N200 E200 S200 TO POB 221.58 MARTIN, KYLE J Prop Addr: 15096 198TH RD 66509 S25 , T07 , R15E , ACRES 37.0 , SE/4 SE/4 LESS BEG NE/C SE/4 SE/4 W440 SE480 1,020.20 MOORE, CLIFFORD C C/O MOORE, TEDDY Prop Addr: 516 E EIGHTH ST 66436 S03 , T07 , R15E , BEG 109.5N NW/C LOT 39 MINNESOTA AVE NE890 TO C/L ABAN RR 33.81										
(continued to page 10)										

Jackson County

MARKETPLACE

To place your ad call 364-3141 today! Reaching 22,800 Readers Each Week! To place your ad call 364-3141 today!

At Your Service

Jim Childs Roofing

Free Estimates
25 Years Experience
Insured
Competitive Prices

Home 364-2451
Cell 364-6101

AAA MICK TREE SERVICE. Kansas Certified Arborist. Tree care and removal. Aerial equipped. Stump Removal. Insured. Free estimates. Holton, Kan., 785-364-5088 or 785-383-6670.

CARPET CLEANING: Commercial and residential. Fast/reliable. \$20 off with ad. 785-383-0234

ELLIS & PEREZ Carpet & Upholstery Cleaning, Deluth, KS. 1-785-458-9695 or 1-785-948-2398.

GROOMING, all critters welcome! Call Tracie at 785-383-0862.

Hydraulic repair, will overhaul cylinders/replace any hose assembly. Call Tony at 785-806-1935.

TREE TRIMMING & REMOVAL, aerial equipment, stump removal, free estimates, insured. Larrison Tree Service, 364-3743, Call anytime.

Local Youth At Your Service

Mowing, trimming and bagging available! Saving money for college. 785-207-0457.

Young, ambitious local youth looking to mow and trim yards or provide other lawn needs to residents in and around Holton and Denison. Please contact Jarred at 785-221-7601.

Special Notice

*ALCOHOL PROBLEM with family member or friend? Holton ALANON family group, Wednesdays, 7p.m., Evangel United Methodist Church, East door, go to Library, Rm.104.

*Hours at the JCMA New Hope Center Food Pantry, located at Fifth Street and Wisconsin Avenue in the Holton First Christian Church basement, are from 3 p.m. to 6 p.m. on Thursdays. For more information, call 364-7021.

A consistent advertising plan with your local newspaper, informing your customers about how you can serve them, builds consumer confidence and trust in your business. Visit with The Holton Recorder advertising experts about how to grow your successful business. Simply call us at 785-364-3141. We are here to help your business reach your goals!

COFFEE-WITH-FRIENDS: 10am Thursdays, Vintage Park-Holton. Everyone welcome/free to community!

If you live in Jackson County and are not a current subscriber of The Holton Recorder, you are eligible to receive the FREE Jackson County Shopper mailed each week! Call our office at 364-3141 for details!

NOTICE: Don't forget to order your Holton Recorder! Subscriptions start at 41 cents per issue!

NOTICE: Summer is a good time to sell unwanted items here in The Holton Recorder classified section!

NOTICE: The Holton Recorder is a local dealer for Superior Rubber Stamp and Seal Company of Wichita. Contact The Recorder for the following supplies: Pre-inked stamps, self-inking stamps, daters, markers, name tags, awards, wall signs, plaques. 364-3141, 109 W.4th St., holtonrecorder@embarqmail.com

NOTICE: The Holton Recorder is responsible for errors in ads/legals for one time ONLY! If you see a mistake in your ad/legal, please contact us before the next scheduled run so that we may correct the error. Thank you.

NOTICE: You will be amazed at the response you get when you place an ad on this page! Prices start at just \$3.55!

*The Heart of Jackson Humane Society shelter is located at 414 E. Eighth St. in Holton and is open from 1 p.m. to 4 p.m. Monday through Saturday and at other times by appointment. For more information, call 364-5156.

Hay

BIG BALES: Approximately each 1,000-pounds @ \$25. 22089 P-Road/Holton. 319-350-3188.

LARGE ROUND BALES of brome, \$25. 785-364-2759 or 785-292-4436, ask for Ron.

Daycare

DAYCARE IN HOLTON has openings. SRS-accepted. Call Sherry at 785-383-9269.

Employment

TRIPLE C

PARTS PROCESSING

Triple C, Inc. has an opening available in Parts Processing. Measuring accuracy and strict attention to detail required. Qualified individuals must have positive attitude, excellent attendance habits and self-motivation. Ideal candidate will have experience with small parts fabrication. Benefits include BCBS medical, 401(k) retirement program, paid holiday and vacation time, and a profit sharing program. Qualified candidates may apply by picking up an application at Triple C, 902 Hwy K246, Sabetha, KS.

785-284-3674 | www.triple-c-inc.com

EMPLOYMENT OPPORTUNITY

Hammersmith
Mfg. & Sales is accepting applications for the following position.

CNC MACHINE OPERATOR

Experience preferred, not required.
APPLY IN PERSON,
at 1000 Vermont Ave., Holton
or 401 Central, Horton

Lost & Found

FOUND: 2-to-3-year-old neutered Lab Shepherd mix, blue collar, at 198th Road/Highway 75. For more information, please contact Banner Creek Animal Hospital at 364-4560.

FOUND: 5-to-6-year-old Lab mix with brown spots, brown collar, male. Found on Square in Holton. For more information, please contact Banner Creek Animal Hospital at 364-4560.

LOST: Black Angus bull, possibly w/yellow ear tag, 2-miles south of 16-Highway on Old English Road. 785-364-7529

Pets

FOR-ADOPTION: (1)Red Heeler, male, 1-to-2-years-old; (1)solid black kitten-(1)Calico kitten, both 4-to-6-weeks-old. For more information, please contact Banner Creek Animal Hospital at 364-4560.

FOR-ADOPTION: Male Lab mix, 4-to-5-years-old, brown/white. For more information, please contact Banner Creek Animal Hospital at 364-4560.

Happy Jack Liquivic: Recognized safe and effective against hook/roundworms by US CVM. Wege's Feed Service, Hoyt and Holton (364-4761). (kennelvax.com)

Wanted

The Heart of Jackson Humane Society is seeking donations of several items for continued operations, as well as more volunteers to walk dogs at the shelter. For more information, call the shelter at 364-5156 or stop by the shelter at 414 E. Eighth St. in Holton.

Business Opportunitites

AVOID BEING TAKEN! Before investing in classified ads on work-at-home opportunities, "Too Good To Be True" business opportunities, or advance fee loans, The Holton Recorder urges readers to visit the consumer protection website at www.InYourCornerKansas.org or call 1-800-432-2310.

Employment

LOOKING FOR PART-TIME care attendant for a special needs 12-year-old boy. Must be 18-years of age and have driver's license. Call 785-305-1430 for details. Leave message.

Lawn & Garden

BULK 100% Decorative river rock, railroad ties, 785-851-0053.

Farmers Market

GRIMM'S GARDENS U-Pick Peach Orchard, now open! Enjoy fresh Kansas peaches!

FOR SALE: 100 lbs. turnips, purple-top, \$1.50/lb.; 200 lbs. tillage radishes \$2/lb. 785-221-8335

Miscellaneous

FOR-SALE: Large newspaper end rolls, many at about 60 pounds. \$1/pound plus tax. Great for table covers for all occasions, among other practical uses. Visit The Holton Recorder office, 109 W. 4th St./Holton or call David at 364-3141.

NOTICE TO SUBSCRIBERS: If you change your address, please inform The Holton Recorder, along with the U.S. Post Office, so that you can avoid missing any editions of the paper. Contact us with your new address at: The Holton Recorder, P.O. Box 311, Holton, KS 66436; call 785-364-3141; or email holtonrecorder@embarqmail.com

Employment

EMPLOYMENT OPPORTUNITY

Hammersmith
Mfg. & Sales is accepting applications for the following position.

WELDER

Experience preferred, not required.
APPLY IN PERSON,
at 1000 Vermont Ave., Holton
or 401 Central, Horton

Rental Property

NICE 1-BEDROOM UPSTAIRS APARTMENT: No smokers/pets, \$390/month. 785-935-2390

1-BEDROOM APARTMENT in Holton: Available now! \$325/months, no pets. 785-484-2026

1-TO-2-BEDROOM APARTMENT for rent in Holton near Square. Call Carol at 364-0126.

BEAUTIFUL RETAIL SPACE, 106 W.5th, Holton. 1,800-plus square feet, mezzanine, new lighting, freshly painted, great window frontage. Contact Betsy, 785-851-9167 or Joni, 785-364-7153.

DUPLEX FOR RENT: 2-bedrooms, 1-bathroom, laundry room, located in Mayetta. Rent \$550/deposit \$550. Available Sept.1. Please call 785-966-2217.

FARMHOUSE FOR-RENT: 8-miles north of Delia on E-Road. Three bedrooms with appliances, outbuildings, garden spot. \$500/month. 785-458-9548

NEWLY REMODELED 1-bedroom apartment for rent. Water/trash paid, no smoking/pets. Available now. 785-565-4189. References required, \$425/month.

NICE, CLEAN, 3-BEDROOM lower duplex: Basement/garage at 522 Iowa/Holton. \$650/month plus deposit. No pets/smokers, please. Call 364-3309.

Residential Property

FOR-SALE BY OWNER: 5-bedroom, 3-bathroom house. 2,600-square feet. Call or text for showing: 785-383-0862.

HOME FOR SALE: 409 Illinois Ave./Holton. Must see to appreciate! If you want a low maintenance, easy-to-heat or cool home, this is the home for you! Call 851-0481 or 851-0013.

NEW LOWER PRICE! Soldier: Like-new, 15-year-old ranch style manufactured home with 1,976 sq.ft. plus basement on approximately 10-acres, but not your typical, manufactured. Many upgrades included, with 4-bedrooms, 2-bathrooms. Full basement finish includes large game room, store room, dark room and work shop, outbuildings. Very well kept property, only \$114,900. Pearl Real Estate/Appraisal Services, Inc. Mike Pearl, Broker. 785-437-6007

Automobiles

FOR-SALE: 2006 Dodge Stratus, good condition, no rust, 121,000 miles, \$2,500. 785-933-3622

Recreational Vehicles

PRICE REDUCED! Like-new 2010 camper, Keystone Cougar, 27-feet, pull-behind, large slide, table/chairs. Please see at 22089 P-Road/Holton. 319-350-1296

No Trespassing

TRESPASSING WITHOUT permission. Notice is hereby given by the undersigned residents of Jackson County that hunting, fishing, trapping, or shooting, or trespassing day or night is positively forbidden on all land owned, or rented or occupied by us, or on roads adjacent to lands at any time of the year, licenses or no licenses. April 1, 2015-2016. Caroline Kern, Phil and Colene Gutierrez, Roger Ackeret, Jay Gilliland, BFD Inc., Joseph B. Nick, Kim Tyler, Harold Knouft and Gary, Tonya and Michelle Everhart.

Employment

Employment

Employment



Now Hiring Controls Technicians

USC, LLC a highly innovative agricultural manufacturing company, is currently seeking to hire several full time Controls Technicians. Responsibilities include control panel assembly, point to point wiring, testing and troubleshooting of electrical control panels, and pre-wiring equipment. Pay is based upon experience and performance, and includes a comprehensive benefit package. We are willing to train the right individual. The company offers opportunity for advancement. A complete job description and application is available by contacting jenniferpoe@uscllc.com. Send resume to 2320 124th Rd, Sabetha, Ks 66534 or email jenniferpoe@uscllc.com. Positions will be open until filled.

ENTHUSIASTIC – ENERGETIC

Are you the one to make a difference?
If so, we want you
to be part of our Great Team.

JOB OPPORTUNITY



Jackson County has an opening for

CNAs

All Shifts

Competitive wages
and benefit package.
Apply in person.

Medicalodges Jackson County
1121 W. 7th St., Holton, KS 66436
EOE

F.W. HUSTON MEDICAL CENTER
Fulltime & Part time Night PA or NP
Critical Access Hospital coverage needed for the ER and Prompt Care Clinic. Position is very autonomous, exceptional working cond. Kansas license req. start ASAP!
Resume or apply to:
Human Resources
Fax: 913-774-3366 or email mkeirns@fwhuston.com
F.W. Huston Medical Center
408 Delaware Winchester, KS 66097
Ph: 913-774-4340
www.fwhuston.com

CNA

16-24 hours per week.
Every Saturday & Sunday
6 a.m. – 2 p.m. (Hours & time negotiable)
Apply in person at:

GLENN MOORE MEADOWS

14005 214th Rd., Holton, KS
785-364-0106

schneckprocess
Integrating the brands of Mac Process, Schenck AccuRate and Clyde Process in Sabetha, KS
Is currently seeking an
ELECTRICAL MAINTENANCE TECHNICIAN

Schenck Process LLC, a leading custom equipment manufacturer, is currently seeking an Electrical Maintenance Tech responsible for resolving all facility electrical maintenance issues to include install & repair of electrical systems & components of industrial machinery & equipment, following electrical code, manuals, schematic diagrams & blueprints. Technical degree preferred, prior exp required.

For consideration, email resume to:
HR@maccequipment.com

Or apply in person at:
810 S Old 75 Hwy, Sabetha, KS

Or fax to:
816-801-3472

Schenck Process offers a full range of benefits. An Equal Opportunity Employer.

SALES ADMINISTRATOR

AgJunction is seeking a **SALES ADMINISTRATOR** to assist the sales team with scheduling promotions, dealer events and communications, including some light travel.

Minimum high school diploma and a minimum 1 - 3 years' experience in computerized business environment. Proficient skill level in Microsoft Office Suite and Internet search processes and research abilities. Ability to handle high level of confidentiality regarding product/vendor information, excellent planning, time management and organizational skills, and ability to work independently while remaining a team player.

AgJunction offers competitive wages and benefits – annual incentive, 12 paid holidays a year, paid vacation, 401K match, paid health, dental, short term disability and life, fitness reimbursement.

Apply online at www.agjunction.com - Employment - Current Opportunities

AgJunction is an Equal Opportunity Employer.
No phone calls please.



SUPERVISORS IN PRODUCTION SHIFTS & QUALITY ASSURANCE & FOOD SAFETY

C.J. Foods, Inc. is now hiring for supervisor roles in the areas of: Production Shifts & Quality Assurance & Food Safety.

Join us for another 30 years of growth as you build your career with us!

Excellent benefits. Generous salary & 401(k) profit sharing.
Apply on-line at www.cjfoodsinc.com. Further inquiries contact Human Resources at 785-336-6132.

C.J. Foods, Inc. is a drug free work environment & EOE.

LPNs Valley Falls, KS

Be part of a nationally recognized health care organization!
We are seeking LPNs to work at our beautiful Linnwood Park location. Full-Time, Part-Time and PRN available. Learn more and apply online at www.midlandcare.org EOE



CMAs and CNAs Valley Falls, KS

Be part of a nationally recognized health care organization!
We are seeking CMAs and CNAs to work at our beautiful Linnwood Park location. Full-Time, Part-Time and PRN available. Learn more and apply online at www.midlandcare.org EOE



DOOLEY CENTER

Now accepting applications for

RN or LPN Charge Nurse for 6 p.m. – 6 a.m.

Dooley Center is a 46-bed nursing facility located on the campus of Mount St. Scholastica. We offer a competitive wage scale & excellent benefits package, including medical, dental, vision & life insurance, retirement plan, all in a quiet, peaceful atmosphere.

Apply at 801 S. 8th St., Atchison, KS 66002 or contact Willette Sinclair at 913-360-6242, EOE

Crossword Answers





Irene Cowger (shown above) was one of several people recognized for their support and fund-raising efforts at the recent dedication of the Northeast Kansas Heritage Complex. Cowger donated a quilt that was sold through a drawing in 2009. She is a previous 4-H member and 4-H leader and served as grand marshal of the Jackson County 4-H Parade in 2006. Photo by David Powls

Cowger...

Continued from Page 1
She and her late husband, Arch, did not have children, but a bond grew between them and some local youth.
“We loved the kids in our neighborhood, and they loved us,” she said.
The couple served as leaders of the Pleasant Valley Rustlers 4-H Club for more than 20 years. She was selected as the grand marshal of the Jackson County 4-H Parade in 2006.

2015 Fair...

Continued from Page 1
Both Allen and Robinson noted that the Heritage Complex remains a work in progress, stating that while some aspects of the new fairgrounds mark an improvement over the old grounds, there is still room for improvement in other areas. Allen said the livestock building was a good example of the former, noting that the only improvement he would suggest for it would be “maybe a couple of bigger fans placed in certain locations.”
Still, he added, the new building was “about 10 times cooler” than the livestock arena at the old fairgrounds.
Cooler temperatures are also needed inside the small exhibit building, Robinson added.
“As of right now, just the kitchen, restrooms and lobby are air-conditioned,” she said. “Maybe in the fu-

ture, we can get the whole building air-conditioned.”
Allen said there are “several things” on the agenda for expansion at the new fairgrounds, including possibly adding a concert shell and seating at the Margaret Hund Amphitheater in time for next year’s fair.

Delinquent tax collection tops \$6,200 in first week

A total of \$6,215.60 in delinquent taxes on Jackson County properties have been collected since a list of delinquent properties was first published in *The Holton Recorder* last week, it was noted.
The names of property owners who have paid their delinquent taxes this past week have been removed from the updated tax list. The updated list is printed on Pages 8 through 10 of today’s edition of *The Recorder*.
The list will be published in three consecutive Monday editions.
Those who pay their past due tax bill also must pay a four percent interest penalty on the amount due, plus a publishing fee of \$16. The interest penalty amount due will increase a little each day that the tax bill goes unpaid, it was reported.
Taxpayers with questions about their tax bills should call the treasurer’s office at 364-3791.

Recorder Classifieds Get Results!

Call 364-3141

Christmas Bureau...

Continued from Page 1
In 1993, organizers of the Christmas Bureau set a goal to gift two toys per child, one gift per adult, one item of clothing for each family member and a basket of food for Christmas dinner. Winter coats were also available to individuals who needed them.
The Christmas Bureau was hosted at Evangel United Methodist Church’s Family Life Center in 2000. The church has served as the home for the Christmas Bureau every year since then and has been operated as just a one-day event for many years.
In 2005 and 2006, NEK-CAP partnered with Toys For Tots to collect toys for the store.
In 2009, NEK-CAP partnered with the Jackson County Ministerial Alliance to provide the event, and the following year, the JCMA and Evangel partnered to organize the store.
In 2011, the event expanded and began offering essential items and pharmacy cards to seniors and disabled members of the community. In addition, bicycles were added to the store, and volunteers were on hand to help gift wrap the items in time for Christmas.
Last year, instead of collecting various essential items to compile

into bags for each family, volunteers sought bags from the public that were already full of the items.
Based on a list of items sought, more than 300 bags stuffed with soap, shampoos, toilet paper and other necessities were donated, saving volunteers times.
In 2014, a total of 762 families were served by the Christmas Bureau.
Needy families and individuals have always been required to fill out an application in order to qualify for the Christmas Bureau. Participants were required to attach a copy of a Women, Infants and Children (WIC) receipt (for children ages five and younger) and either a copy of a free and reduced form from school or verification of food stamp assistance (for school-aged children) with their applications.
Senior citizens and adults with disabilities also needed to provide proof of a limited income, such as a copy of an income tax statement, monthly bank statement, Envision card or proof of monthly income.
Anyone or any group or organization interested in volunteering as the lead coordinator for the Christmas Bureau is encouraged to contact a local pastor or any member of the Jackson County Ministerial Alliance.

Back to School...

Continued from Page 1
Colorado School open house from 5:45 p.m. to 6:45 p.m. Tuesday, and then students in third through fifth grades and their parents are invited to the Central School open house from 7 p.m. to 8 p.m.
Jackson County’s schools, as well as schools in the Atchison County school district in Effingham, will open doors for class on Wednesday, with the exception of Holton High School sophomores, juniors and seniors, who will begin class on Thurs-

day, it was reported. Thursday is also the first day of school for Wetmore Attendance Center students.
Also on Wednesday, enrollment and classes will begin at the Fresh Start Learning Center, now located at 501 Dakota Ave. in the former Jackson County Fair Building. The learning center offers high school diploma completion programs for all Jackson County schools, plus students in the Prairie Hills, Atchison County, South Brown County, Valley Falls, Vermilion and Onaga school districts.

LAND AUCTION

Saturday, August 29, 2015
10 a.m. - On Site
118 Rd., Hoyt, KS



Country Estate building site(s) in southern Jackson County, Kansas. 54.88 acres more or less in three tracts with brome and native grass & timber. Three tracts will be sold as one.

COUNTRYWIDE REALTY INC.

Darrell Simnitt
Countrywide Realty, Inc.
785-231-0374
www.simnittauction.com



ALL OF THIS...

✓ Private Apartment

✓ Housekeeping

✓ 2 Meals/Day

✓ Social Activities

✓ Transportation

✓ Pet Friendly

+ Many More Amenities

FOR ONE LOW PRICE!
Call today for current move in specials.

COME SEE FOR YOURSELF! SCHEDULE A TOUR TODAY!

Call Andrea or Linda!
785-273-6847
4200 SW Drury Ln., Topeka, KS
Your Life. Your Style. Your Home.

ARBOR COURT
RETIREMENT COMMUNITY AT TOPEKA

Employment

HARDWARE HELP WANTED:

Full-time – weekends included. Must be able to lift 80 lbs. Health insurance available, paid vacation and store discount. Must have a valid driver’s license.
Pick up application at:
HOLTEN FARM & HOME
Highway 75 & 6th St., Holton, KS
785-364-2162

REGISTERED NURSE – Days

Sabetha Community Hospital is now accepting applications for a Part-Time day RN. One shift per week with every 3rd weekend being required. Facility is 90% lift free. Supportive medical staff consists of five Family Practice Physicians.
An excellent base salary is offered with additional benefits including vacation, holiday, sick time, and pension plan.
If interested in this opportunity, visit the hospital’s website at www.sabethahospital.com or call Julie Holthaus, HR Director at 785-284-2121 ext. 584.

REGISTERED NURSE – Nights

Sabetha Community Hospital is now accepting applications for Full-Time and Part-Time Night RNs. Shifts are 12 hours with 36 hours per week as Full-Time. Approximately every 3rd weekend is required. Facility is 90% lift free. Supportive medical staff consists of five Family Practice Physicians.
An excellent base salary is offered with a competitive shift differential. Additional benefits include vacation, holiday, sick time, group health insurance with dental, eye and prescription drug riders, pension plan, group life insurance with dependent life, disability and numerous other benefits.
If interested in this opportunity, visit the hospital’s website at www.sabethahospital.com or call Julie Holthaus, HR Director at 785-284-2121 ext. 584.

ENVIRONMENTAL SERVICES EMPLOYEE

Eastridge in Centralia is looking for a full-time environmental services employee. This position includes daily housekeeping and facility laundry services. We’re looking for someone who enjoys working with elders and is very task-oriented.
This position is on the day shift and does include working every third weekend.
We do provide a benefit package including health insurance.
Call Eastridge in Centralia at 785-857-3388 for more information or apply online at www.chcsks.org.
Eastridge is a division of Community HealthCare System, Inc. and an EOE.

PART-TIME NIGHT NURSE

Eastridge Nursing Facility at Centralia has an immediate position for a Part-Time Night Nurse. Will be working one 12-hour shift, 5 p.m. to 5 a.m. per week and every third weekend. Looking for someone who enjoys working with elders and is very task-oriented. Competitive wages and benefits.
Call Eastridge at 785-857-3388 for more details or apply online at www.chcsks.org
A division of Community HealthCare System, Inc. EOE.

WANTED: RN

Eastridge Nursing Facility has a full-time day position for an RN. This includes three twelve-hour shifts a week and every third weekend. Competitive wages and benefits.
For information call Eastridge Nursing Facility at 785-857-3388 at Centralia, KS
Eastridge is a division of Community HealthCare System, Inc. EOE.

Residential Property

~ FOR SALE ~
400 CHEYENNE, HOLTON, KS



Everything on 1 level and it is a GREAT home! 3 BR, 2 1/2 baths, lovely kitchen, dining area with new tile backsplash, formal dining plus living rm w/FP and also family rm. Dbl car garage is attached in addition to an oversized dbl detached.
Sits on a beautiful corner lot. This home is in perfect condition. \$178,500.
Call Joyce Rakestraw, Realty Professionals 785/221-1643.

PRICE REDUCED!



FOR SALE BY OWNER: - 3-bedroom, 2-bath, nice ranch home in Holton at 409 Illinois on two big city lots with one-car attached garage. This home built in 1964 has beautiful hardwood floors. Big kitchen with dishwasher and garbage disposal. Big utility room. Interior has new paint throughout. Exterior has nice vinyl siding. Backyard has nice patio and new wood fencing. Property includes oversize, finished and heated, two-car unattached garage plus another nice storage building. Nice, quiet neighborhood. This home is ready to go with newer heat/AC. Call 851-0481 or 851-0013 or 364-3800.